

WALL LEGEND

INTERIOR WALL:
5/8" GYP. BD. ON BOTH SIDES
3 5/8" MIL STUDS @ 16" o.c.
w/ 3 1/2" ACOUSTIC BATT INSULATION

EXTERIOR WALL: 4" NOMINAL BRICK
VENEER w/ AIR SPACE ON
FLUID APPLIED AIR BARRIER ON
5/8" EXT. GRADE PLYWOOD ON
6" METAL STUDS w/ 6" BATT INSULATION
& 5/8" PTD. GYP. BD. @ INTERIOR SIDE

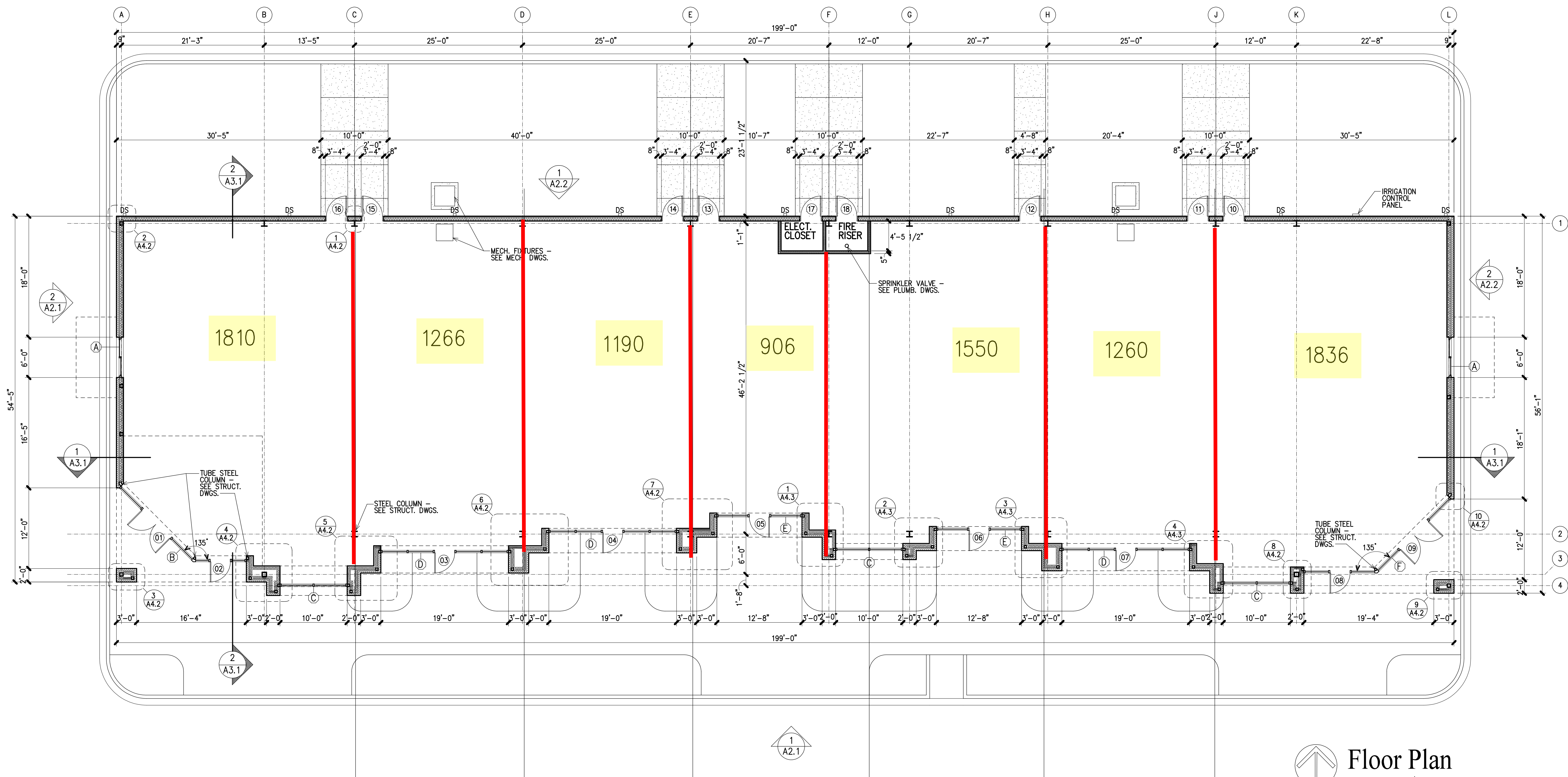
01 DOOR - SEE SHEET A5.1

A WINDOW - SEE SHEET A5.2

FEC FIRE EXTINGUISHER CABINET

GENERAL NOTES

1. DIMENSIONS ARE TO FACE OF BRICK, AND FACE OF GYP. BD
2. SEAL ALL PENETRATIONS FROM CONDITIONED TO NON-CONDITIONED SPACES



Floor Plan
1/8"=1'-0"

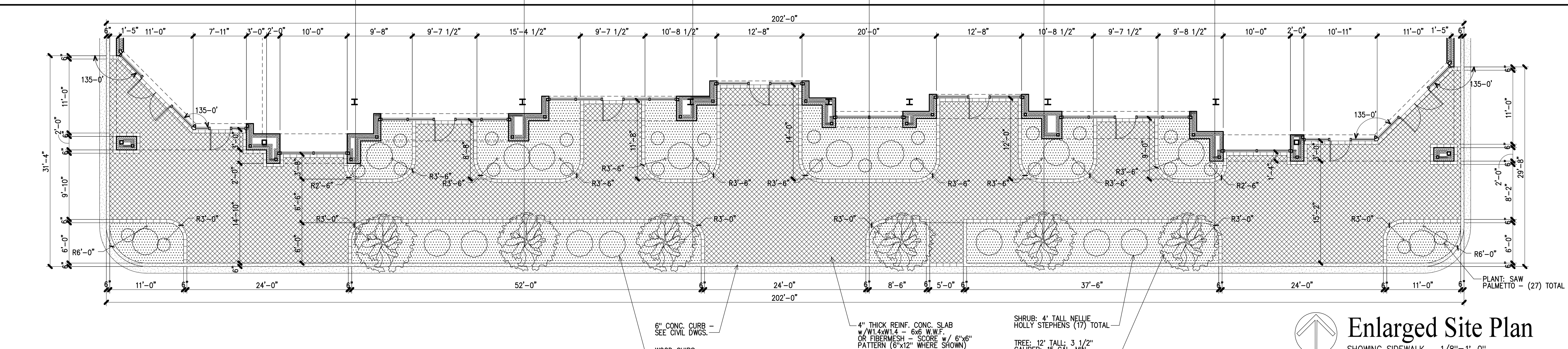
NOT FOR CONSTRUCTION

SITE LEGEND

4" THICK REINF. CONC. SLAB
w/ W1.4xW1.4 - 6x6 W.W.F.
OR FIBERMESH - SCORE w/ 6"x6"
PATTERN (6"x12" WHERE SHOWN)

6" CONC. CURB -
SEE CIVIL DWGS.

WOOD CHIPS



Enlarged Site Plan
SHOWING SIDEWALK 1/8"=1'-0"

Project
9 Mile Road Retail Center
Pensacola, Florida

Date: 07-11-24
Project No. 0721
Sheet No. **A1.1**