



THE BANKING HALL
AT 108 LEONARD



THE BANKING HALL
AT 108 LEONARD

OVERVIEW

Contained within the elegant, landmarked condominium conversion 108 Leonard, The Banking Hall is an exceptional landmarked space located in the heart of New York City's trendy Tribeca neighborhood.

The multi-level Banking Hall offers an expansive floor plan suitable for an office, showroom, museum, gallery or similar usage.

The opulent space is over 20,000 square feet, and features soaring ceiling heights, rare architectural details and is accessible by a separate, private entrance.



PRIVATE ENTRANCE ON LAFAYETTE

BH

BANKING HALL

108 LEONARD



THE BANKING HALL
AT 108 LEONARD

BUILDING FEATURES

Private Entrance on Lafayette
Large, Open and Flexible Floor Plans
Multiple Levels
Restoration to Original, Historical Elegance
Marble Staircase
2 Client Elevators and 1 Service Elevator
Capacity: 350
All Uses Considered
Possession To Be Agreed Upon
Nearby Subway Lines: 1, 6, N, Q, R, W, J and Z

GROUND

Approx. 1,068 SF
12' to 29' Ceilings

MAIN LEVEL

Approx. 10,339 SF
14' to 29' Ceilings

MEZZANINE

Approx. 7,417 SF*
9' to 14' Ceilings

CELLAR

Approx. 1,267 SF
15' Ceiling

*Additional 2nd Floor space to create over 20,000 SF

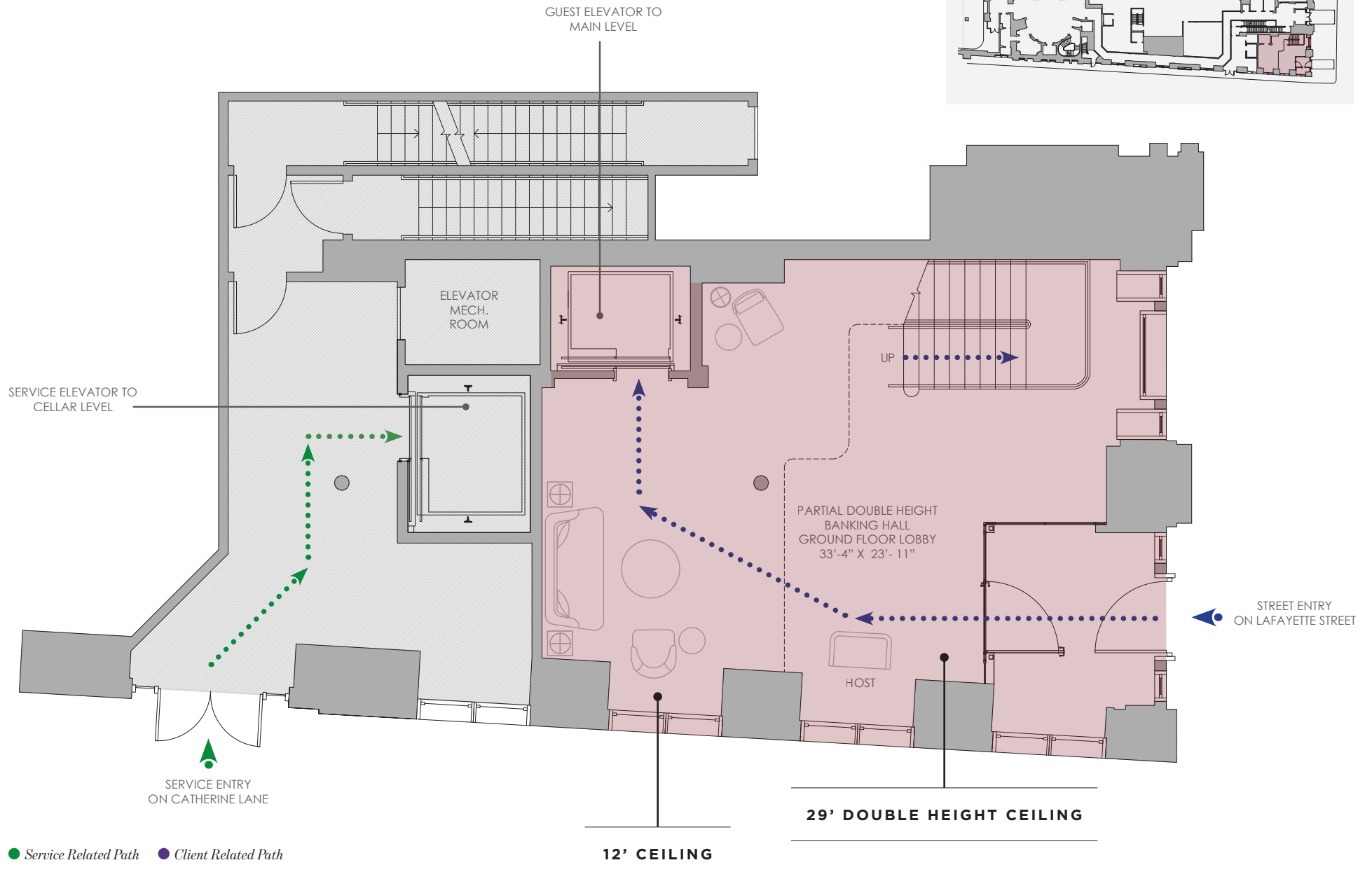






THE BANKING HALL
AT 108 LEONARD

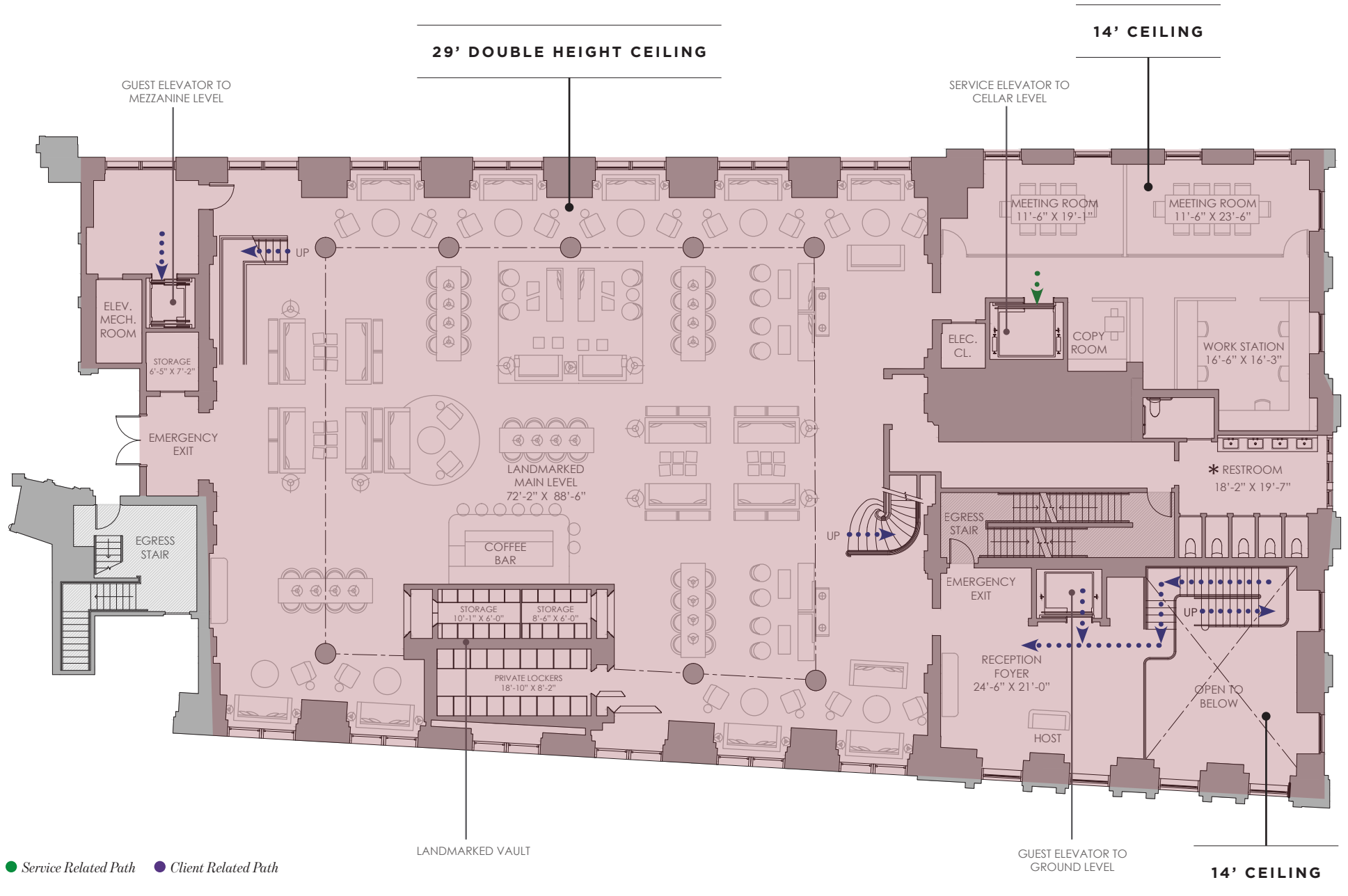
GROUND LEVEL 1,068 Square Feet





MAIN LEVEL 10,339 Square Feet

THE BANKING HALL
AT 108 LEONARD



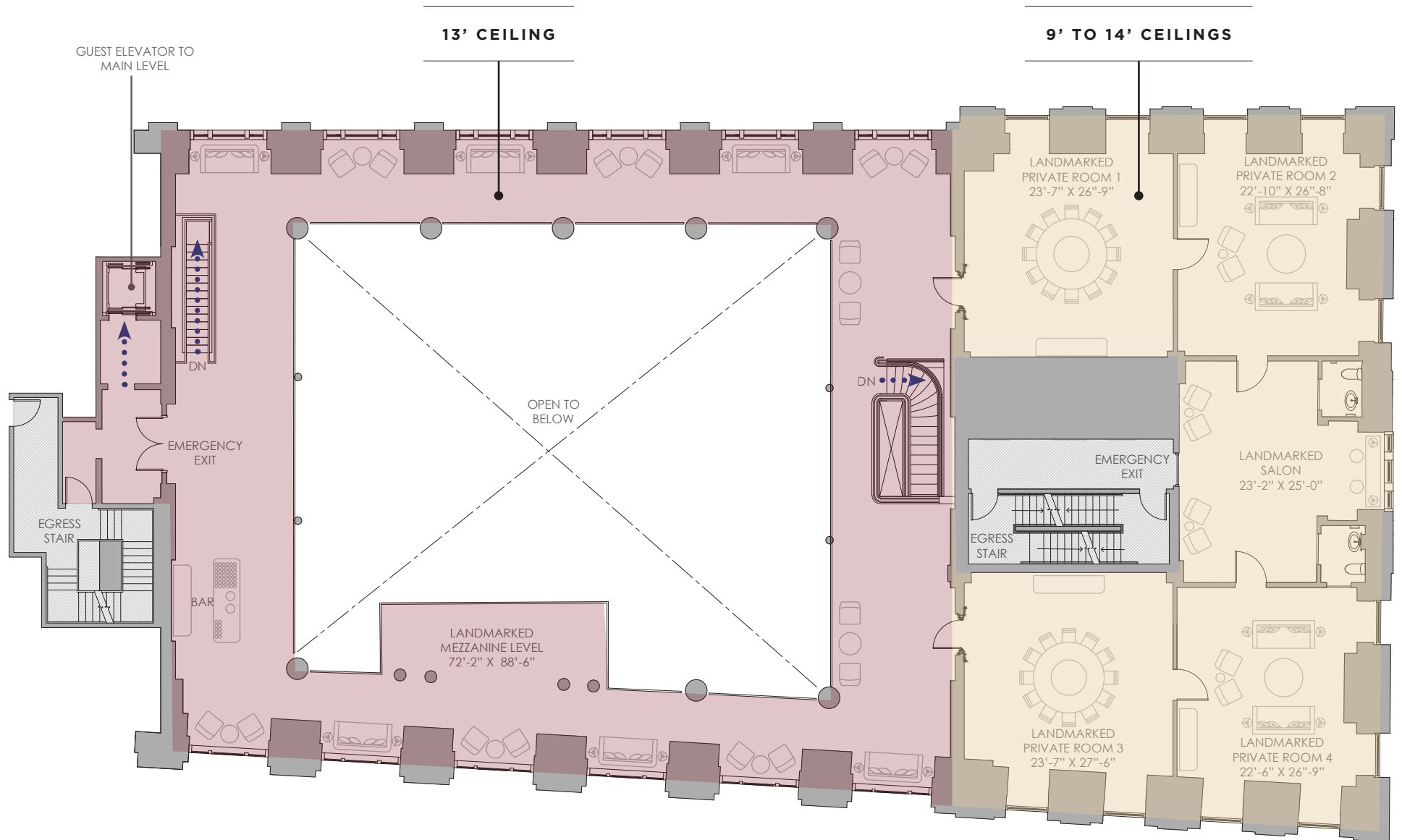
● Service Related Path ● Client Related Path

14' CEILING



THE BANKING HALL
AT 108 LEONARD

MEZZANINE + OPTIONAL 2ND FLOOR 7,417 Square Feet

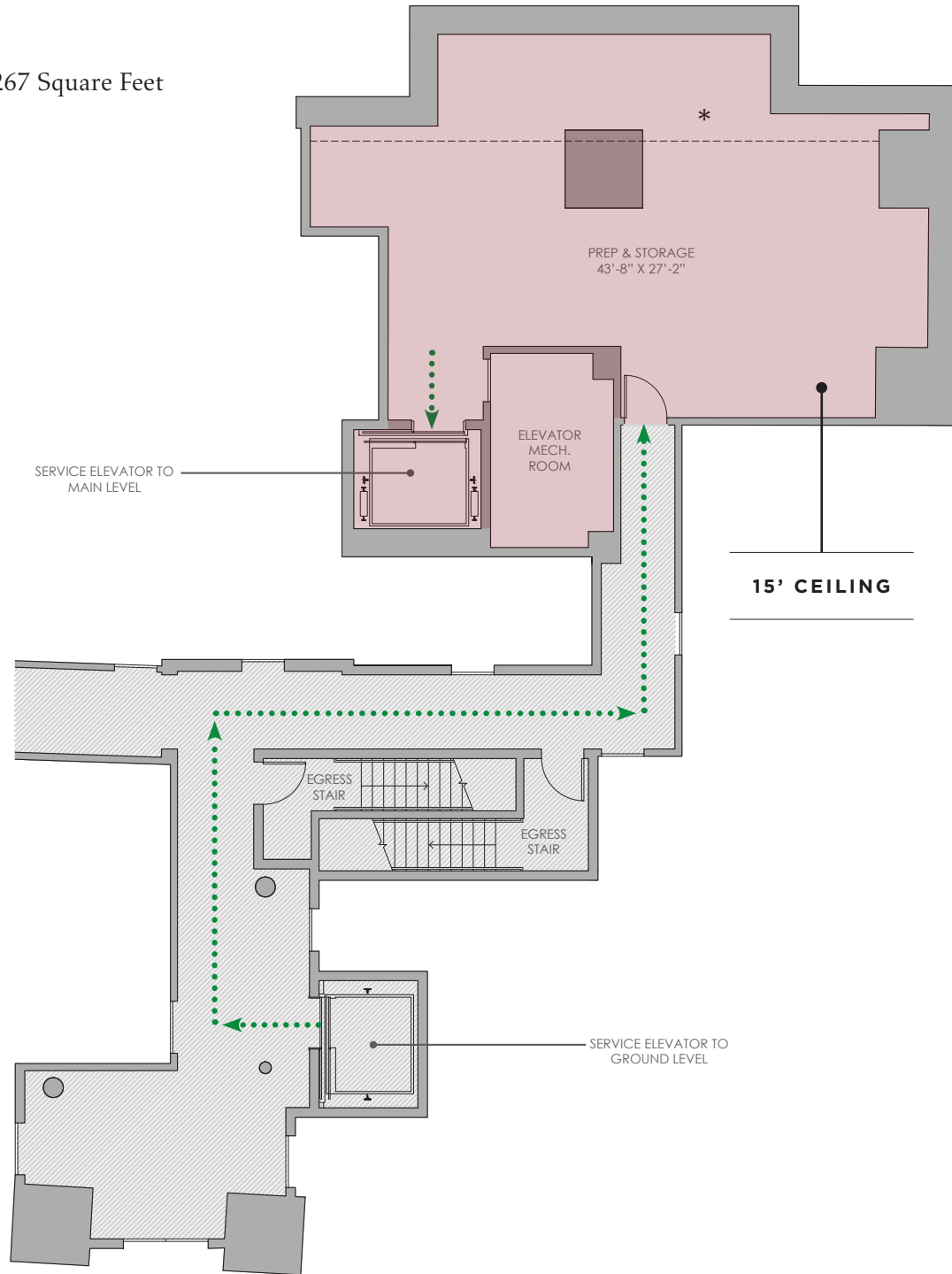


● Service Related Path ● Client Related Path



THE BANKING HALL
AT 108 LEONARD

CELLAR 1,267 Square Feet



● Service Related Path ● Client Related Path



THE BANKING HALL
AT 108 LEONARD

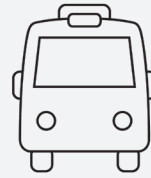
THE NEIGHBORHOOD

Known for its cobblestone streets, trendy restaurants and boutiques, Tribeca is one of New York City's chicest neighborhoods.

This prime location not only affords the Banking Hall at 108 Leonard proximity to New York's top restaurants, hotels, social clubs and other hot spots, it's also accessible by neighboring residential condominium in the area.

Notable neighbors include the New York Supreme Court, New York Law School, the U.S. Court of International Trade, City Hall, the New York Public Library, the Federal Building, the World Trade Center, and numerous transportation services.

**Statistics are within a 0.25 mile radius of 108 Leonard*



EASILY ACCESSIBLE

<8 Minute Walk to 8 Subway Lines



NEIGHBORHOOD WORKFORCE

~40,000 Employees



RESIDENTIAL POPULATION

~13,000 Residents



AVG HOUSEHOLD INCOME

\$109,227

39

MEDIAN AGE

39 Years Old



RESIDENTIAL UNITS

~5,000 Units



■ RETAIL
 ■ OFFICE
 ■ RESIDENTIAL
 ■ POINTS OF INTEREST



FOR MORE INFORMATION, PLEASE CONTACT

Peter Braus Managing Principal | 212.776.1203 | pbraus@lee-associates.com

Brad Schwarz Executive Managing Director & Principal | 212.776.1290 | bschwarz@lee-associates.com

Cory Gahr Managing Director | 212.776.1271 | cgahr@lee-associates.com



Development managed by Elad Group. Sponsor: C3GB

All artist's or architectural renderings, sketches, graphic materials and photographs depicted or otherwise described herein are proposed and conceptual only, and are based upon preliminary development plans, which are subject to change. Sponsor reserves the right to make changes, substitutions of material, equipment, fixtures, finishes and appliances.

Certain images provided by Jeffrey Beers International and their designs are the intellectual property of Jeffrey Beers International, all rights reserved. Copyright 2018. Further use of the images or their designs can only be obtained via written permission of Jeffrey Beers International, LLC.