

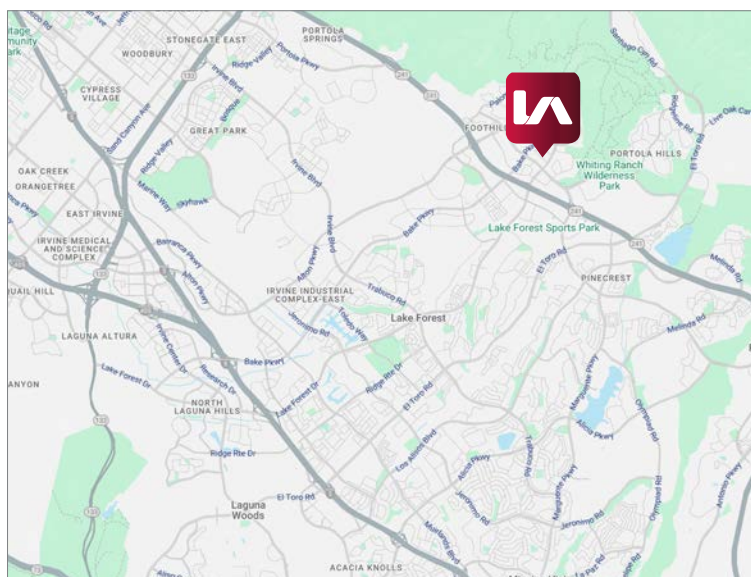
±9,852 SF INDUSTRIAL/R&D BUILDING FOR SALE

27156 BURBANK | FOOTHILL RANCH, CA 92610



LISTING DATA

- Two-Story, High Image Industrial/R&D Building
- ±3,800 SF of office space
- 4 private offices, conference room, break room, open area, and private restrooms
- 2 ground level loading doors
- 400 amps
- Close proximity to the 241 FTC and the 5 & 405 Freeways
- Outstanding views of Saddleback Valley
- Abundant amenities located at nearby Foothill Ranch Towne Centre



Mark Jerue
Senior Vice President
Lic. #01073399
949.790.3121
mjerue@leeirvine.com

Craig Fitterer
Senior Vice President
Lic. #01246929
949.790.3123
cfitterer@leeirvine.com

BJ Fell
Senior Vice President
Lic. #01929179
949.790.3144
bfell@leeirvine.com

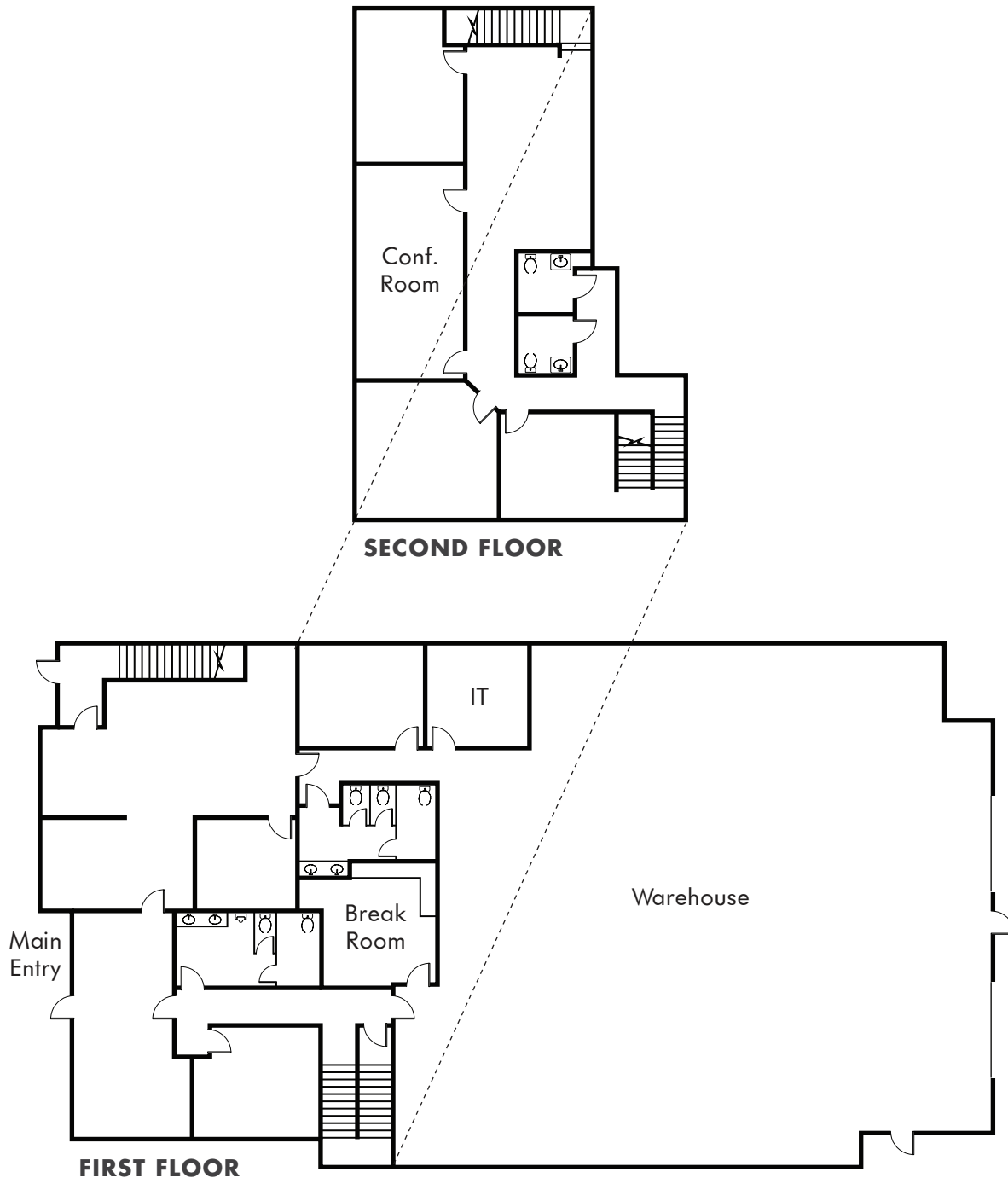
GianCarlo Spinosi
Associate
Lic. #02065254
949.790.3109
gspinosi@leeirvine.com

All information furnished regarding property for sale, rental or financing is from sources deemed reliable, but no warranty or representation is made to the accuracy thereof and same is submitted to errors, omissions, change of price, rental or other conditions prior to sale, lease or financing or withdrawal without notice. No liability of any kind is to be imposed on the broker herein.

±9,852 SF INDUSTRIAL/R&D BUILDING FOR SALE

27156 BURBANK | FOOTHILL RANCH, CA 92610

FLOOR PLAN



Mark Jerue
Senior Vice President
Lic. #01073399
949.790.3121
mjerue@leeirvine.com

Craig Fitterer
Senior Vice President
Lic. #01246929
949.790.3123
cfitterer@leeirvine.com

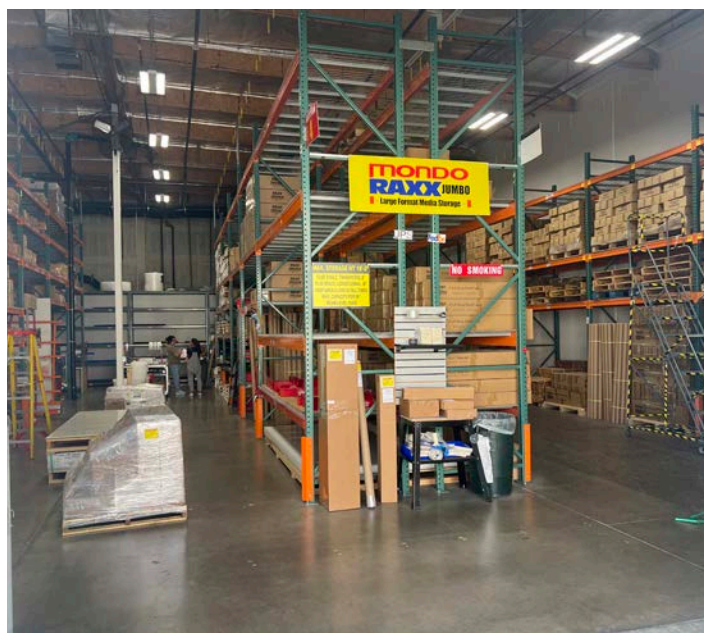
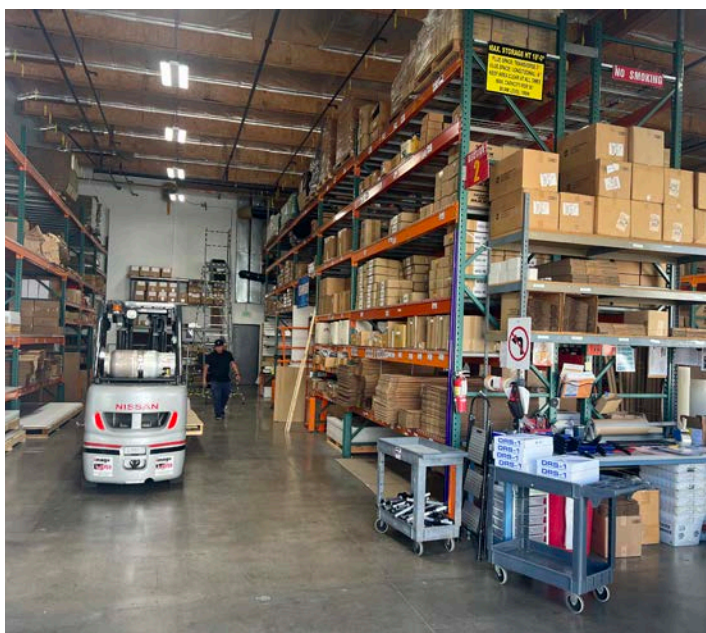
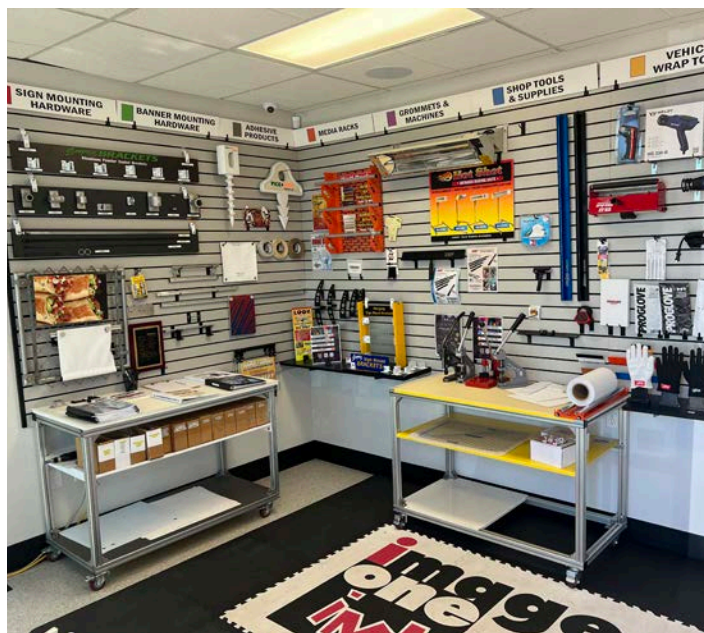
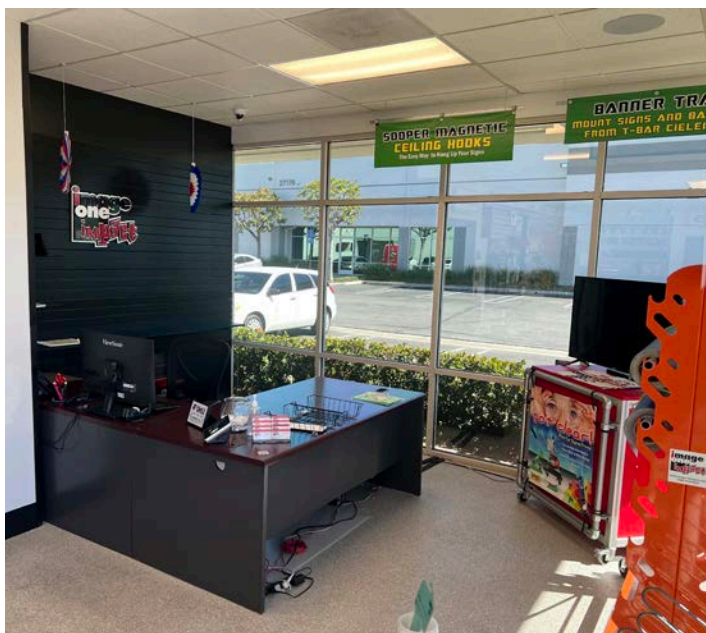
BJ Fell
Senior Vice President
Lic. #01929179
949.790.3144
bfell@leeirvine.com

GianCarlo Spinosi
Associate
Lic. #02065254
949.790.3109
gspinosi@leeirvine.com

All information furnished regarding property for sale, rental or financing is from sources deemed reliable, but no warranty or representation is made to the accuracy thereof and same is submitted to errors, omissions, change of price, rental or other conditions prior to sale, lease or financing or withdrawal without notice. No liability of any kind is to be imposed on the broker herein.

±9,852 SF INDUSTRIAL/R&D BUILDING FOR SALE

27156 BURBANK | FOOTHILL RANCH, CA 92610



Mark Jerue
Senior Vice President
Lic. #01073399
949.790.3121
mjerue@leeirvine.com

Craig Fitterer
Senior Vice President
Lic. #01246929
949.790.3123
cfitterer@leeirvine.com

BJ Fell
Senior Vice President
Lic. #01929179
949.790.3144
bfell@leeirvine.com

GianCarlo Spinosi
Associate
Lic. #02065254
949.790.3109
gspinosi@leeirvine.com

All information furnished regarding property for sale, rental or financing is from sources deemed reliable, but no warranty or representation is made to the accuracy thereof and same is submitted to errors, omissions, change of price, rental or other conditions prior to sale, lease or financing or withdrawal without notice. No liability of any kind is to be imposed on the broker herein.