



Property Highlights

- Medical Office
- Two-Story Freestanding building
- Excellent layout with 3 exam rooms
- 2 ADA restrooms, waiting area, nursestation, etc.
- Parking located in back of building
- Monument signage available on highly active Howell Branch Road

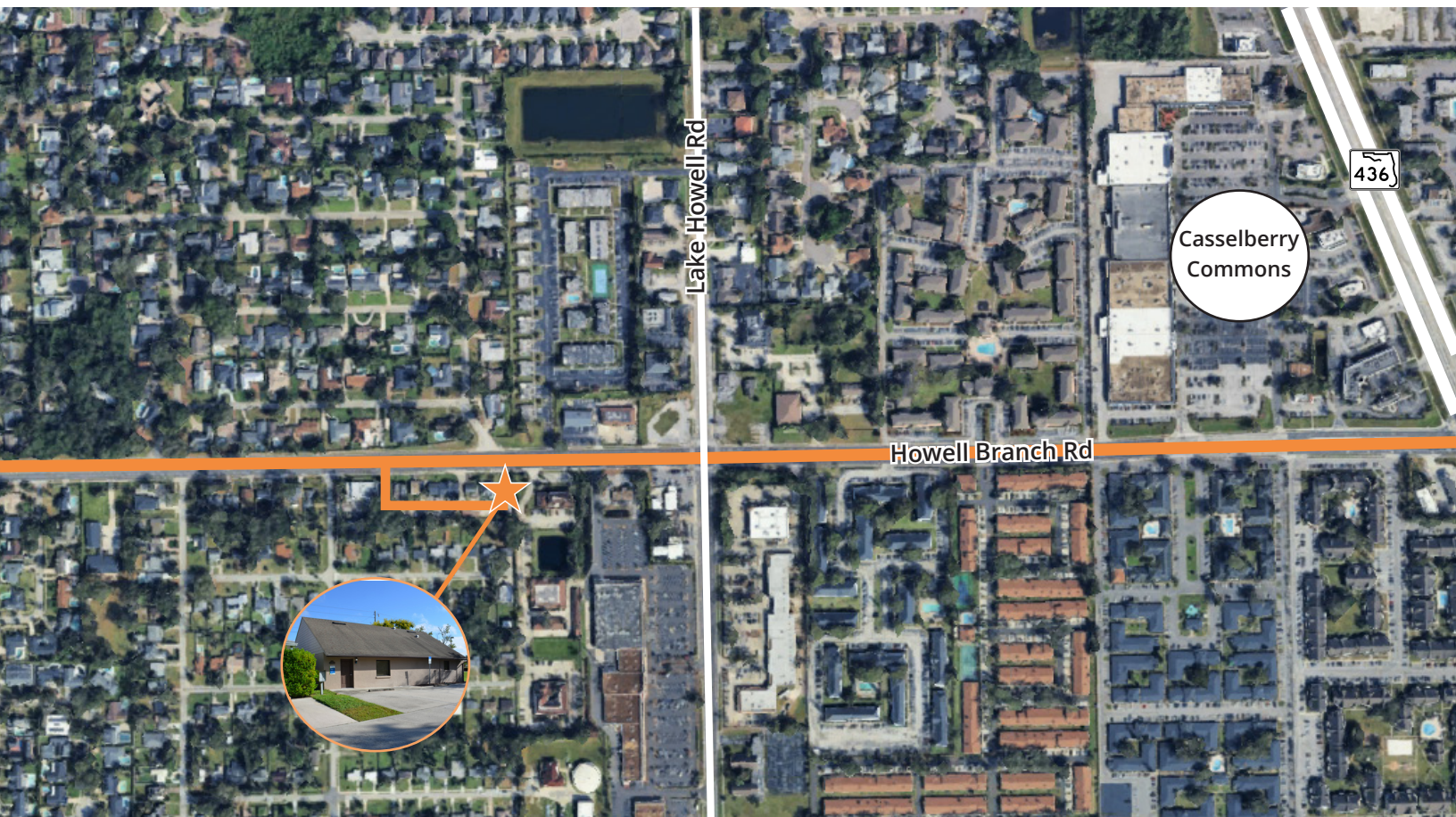
Location

- Located past The Casselberry Commons near the intersection of State Road 436 and Howell Branch Road
- Minutes from Semoran Boulevard (State Road 436), Aloma Avenue, and Orlando Avenue.

Emily Zinaich, Senior Vice President
D 407 440 6641
C 407 230 8797
emily.zinaich@avisonyoung.com

**AVISON
YOUNG**

For Lease
1940 Howell Branch Road
Winter Park, FL 32792

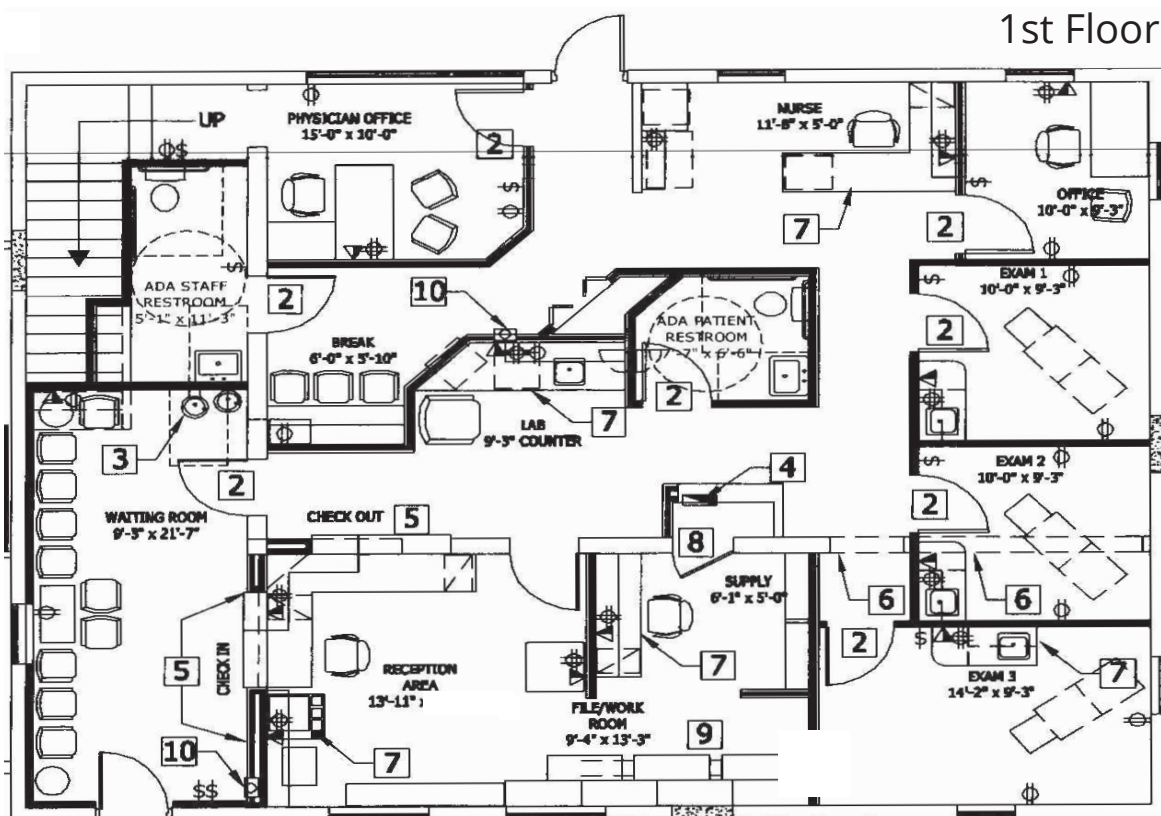


Nearby Amenities

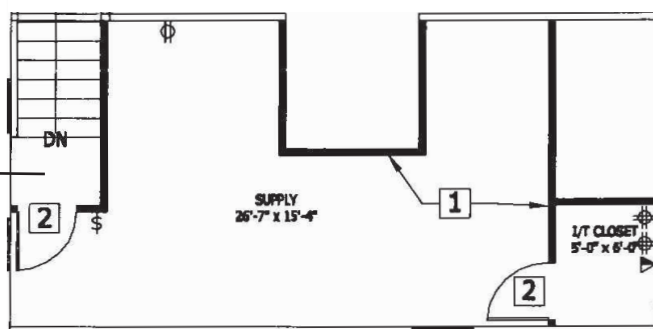


Floor Plans

2,746± RSF Total



2nd Floor



Emily Zinaich, Senior Vice President
D 407 440 6641
C 407 230 8797
emily.zinaich@avisonyoung.com