

GREINER MALTZ

REAL ESTATE

 1065 ISLIP AVENUE, CENTRAL ISLIP, NY

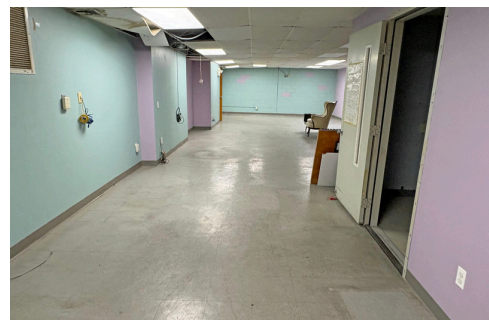
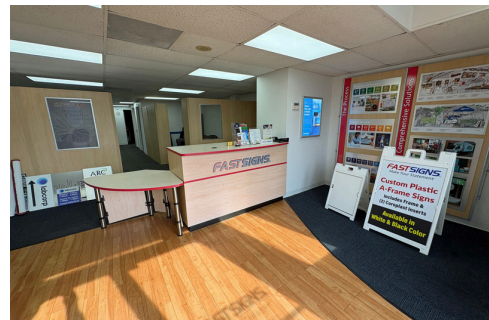
+/- 10,000 Sq. Ft.
for the price of
6,000 Sq. Ft.



FOR SALE

Property features:

- +/- 6,000 sq. ft. commercial building on 0.63 acre
- +/- 1,450 2nd floor office space
- +/- 530 sf 1st floor retail/office space
- 20 car parking
- 600 amps
- gas heat
- 1 dock
- bonus area includes +/- 4,550 sq. ft. basement supported by freight lift and has double doors for outside access



EXCLUSIVE BROKER:

TOM ATTIVISSIMO, CCIM

Mobile: (516) 606-6161

tomatti@greiner maltzofli.com



heavy steel good for
floor load





