

13722 HARVARD PLACE

GARDENA, CALIFORNIA 90249

FREESTANDING INDUSTRIAL



PROPERTY HIGHLIGHTS

Building Size	±10,364 SF
Asking Rate / SF	\$1.35 Gross (\$13,991 / Mo.)

- ±10,364 SF Industrial Building on ±20,464 SF of Land
- Freestanding Building with Private Fenced Yard
- ±5,000 SF of Nice Office
- 400 Amps, 120/208 Volts, 3 Phase Power
- Parcel # 6102-013-034
- GAM2 Zoning
- 15 Parking Spaces
- Available 1/1/2026

[CLICK TO VIEW VIRTUAL TOUR](#)

Contact Us Today!

Garrett Massaro ^{SIOR}

Principal | DRE LIC 01771471
gmassaro@leelalb.com
562.354.2516

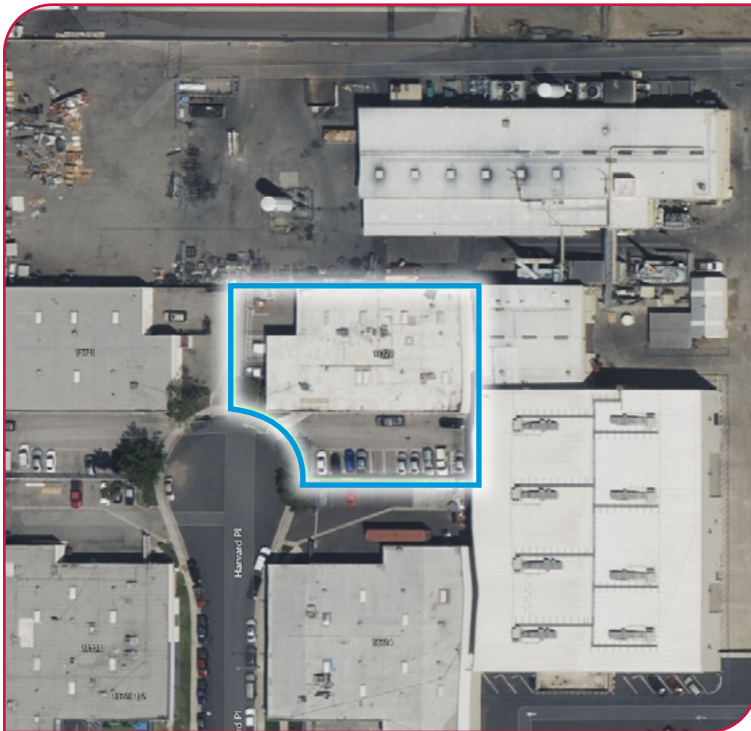
Brandon Carrillo

Principal | DRE LIC 01745362
bcarrillo@leelalb.com
562.354.2516

13722 HARVARD PLACE

GARDENA, CALIFORNIA 90249

FREESTANDING INDUSTRIAL



Garrett Massaro SIOR
Principal | DRE LIC 01771471
gmassaro@leelalb.com
562.354.2516

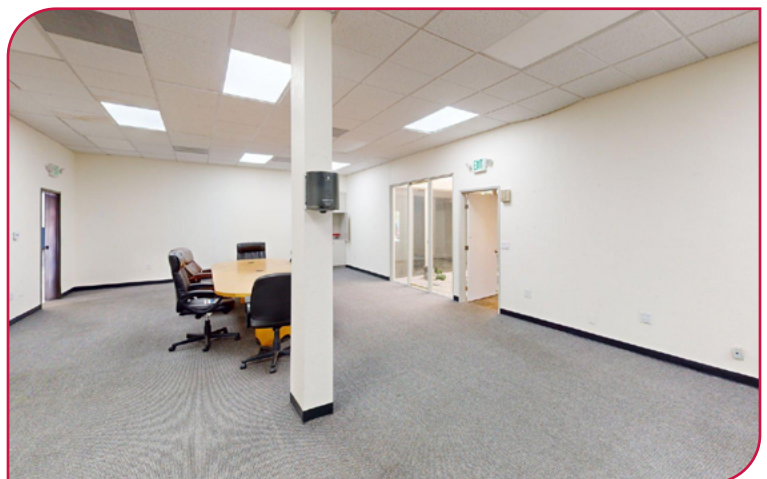
Brandon Carrillo
Principal | DRE LIC 01745362
bcarrillo@leelalb.com
562.354.2516

Lee & Associates Los Angeles - Long Beach Inc.
DRE License 01069854
5000 E Spring St, Suite 600, Long Beach, CA 90815

13722 HARVARD PLACE

GARDENA, CALIFORNIA 90249

**FREESTANDING
INDUSTRIAL**



Garrett Massaro ^{SIOR}
Principal | DRE LIC 01771471
gmassaro@leelalb.com
562.354.2516

Brandon Carrillo
Principal | DRE LIC 01745362
bcarrillo@leelalb.com
562.354.2516

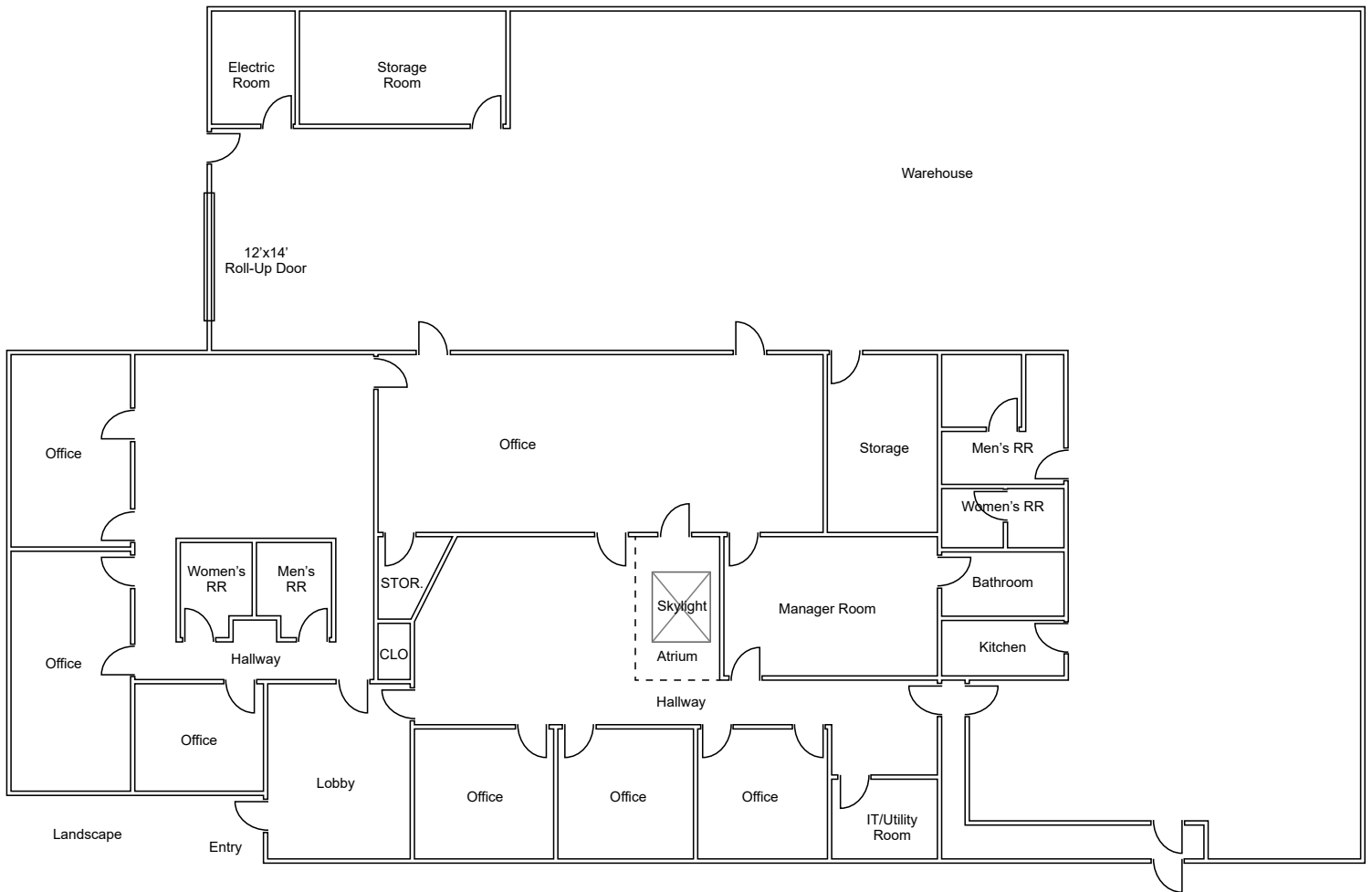
Lee & Associates Los Angeles - Long Beach Inc.
DRE License 01069854
5000 E Spring St, Suite 600, Long Beach, CA 90815

13722 HARVARD PLACE

GARDENA, CALIFORNIA 90249

FREESTANDING INDUSTRIAL

**EXISTING FLOOR PLAN
±5,000 SF OFFICE**



This plan and its measurements are approximate and not up to scale. It is the responsibility of the buyer/lessor to verify the property's measurements independently.

Garrett Massaro ^{SIOR}
Principal | DRE LIC 01771471
gmassaro@leelalb.com
562.354.2516

Brandon Carrillo
Principal | DRE LIC 01745362
bcarrillo@leelalb.com
562.354.2516

Lee & Associates Los Angeles - Long Beach Inc.
DRE License 01069854
5000 E Spring St, Suite 600, Long Beach, CA 90815