



HAYES & SHERRY

2 STEEPLE STREET PROVIDENCE, RI

± 6,644 SF SPACE AVAILABLE / FOR LEASE

Property Highlights

- Available Suites:
- Second Floor – 1,146 & 2,049 SF
- Third Floor - 714 SF
- Fourth Floor – 2,735 SF
- Mixed-use building with parking
- On the corner of Steeple & Canal Streets with spectacular views of downtown Providence and College Hill
- Proximity to all things Downtown, universities, restaurants, the financial business district, and cultural events
- Walking distance to bus and rail

Traffic

- Westminster St.- 18,300 vpd



For more information, please contact:

Derek Brazeau
Multifamily Broker
+1 401 273 2052
dbrazeau@hayessherry.com

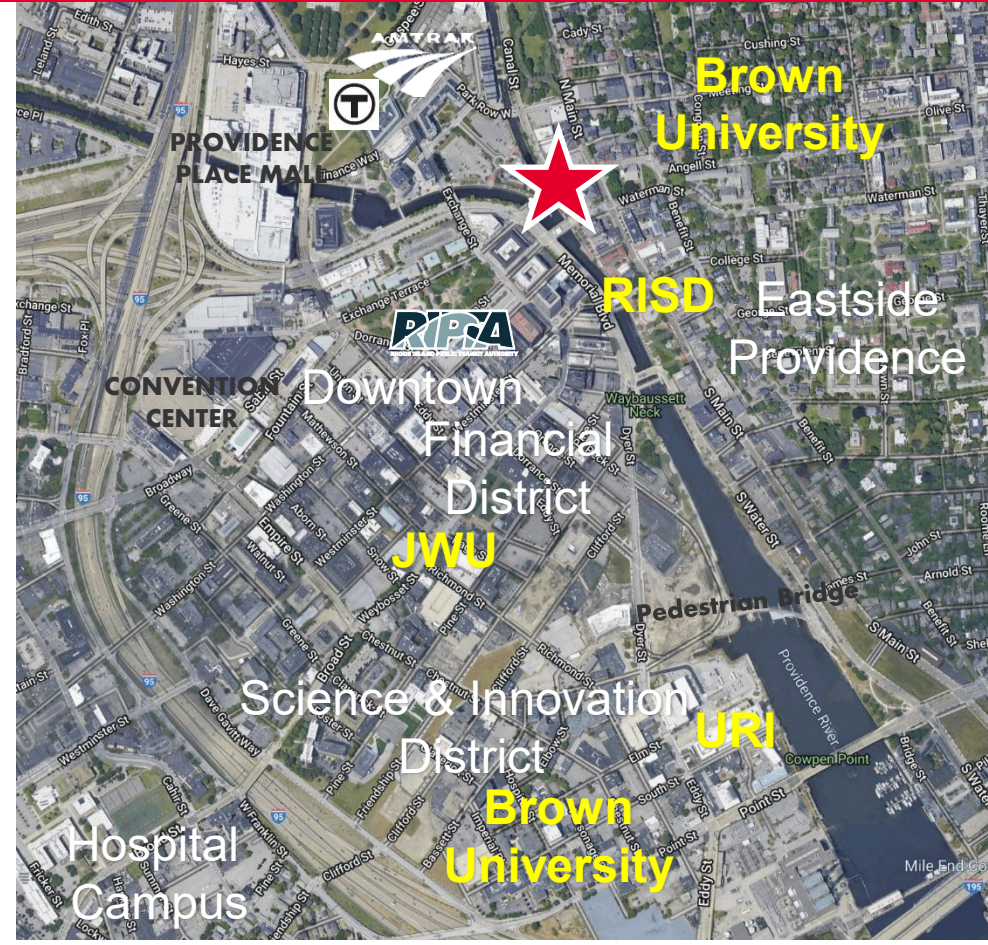
Pete Hayes
Partner
+1 401 273 7426
phayes@hayessherry.com

146 Westminster Street, 2nd floor
Providence, RI 02903
phone: +1 401 273 1980
hayessherry.com

Independently Owned and Operated / A Member of the Cushman & Wakefield Alliance

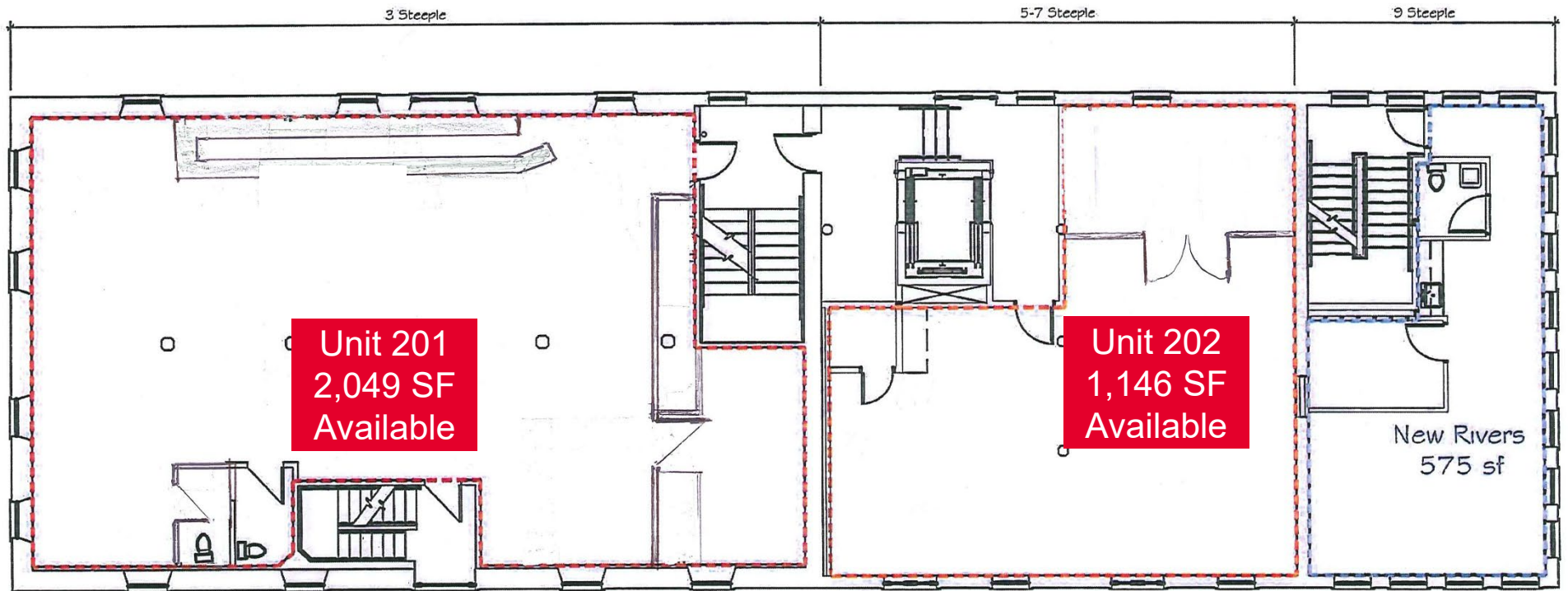
Cushman & Wakefield Copyright 2025. No warranty or representation, express or implied, is made to the accuracy or completeness of the information contained herein, and same is submitted subject to errors, omissions, change of price, rental or other conditions, withdrawal without notice, and to any special listing conditions imposed by the property owner(s). As applicable, we make no representation as to the condition of the property (or properties) in question.

2 STEEPLE STREET PROVIDENCE, RI



2 STEEPLE STREET PROVIDENCE, RI

SECOND FLOOR SPACE

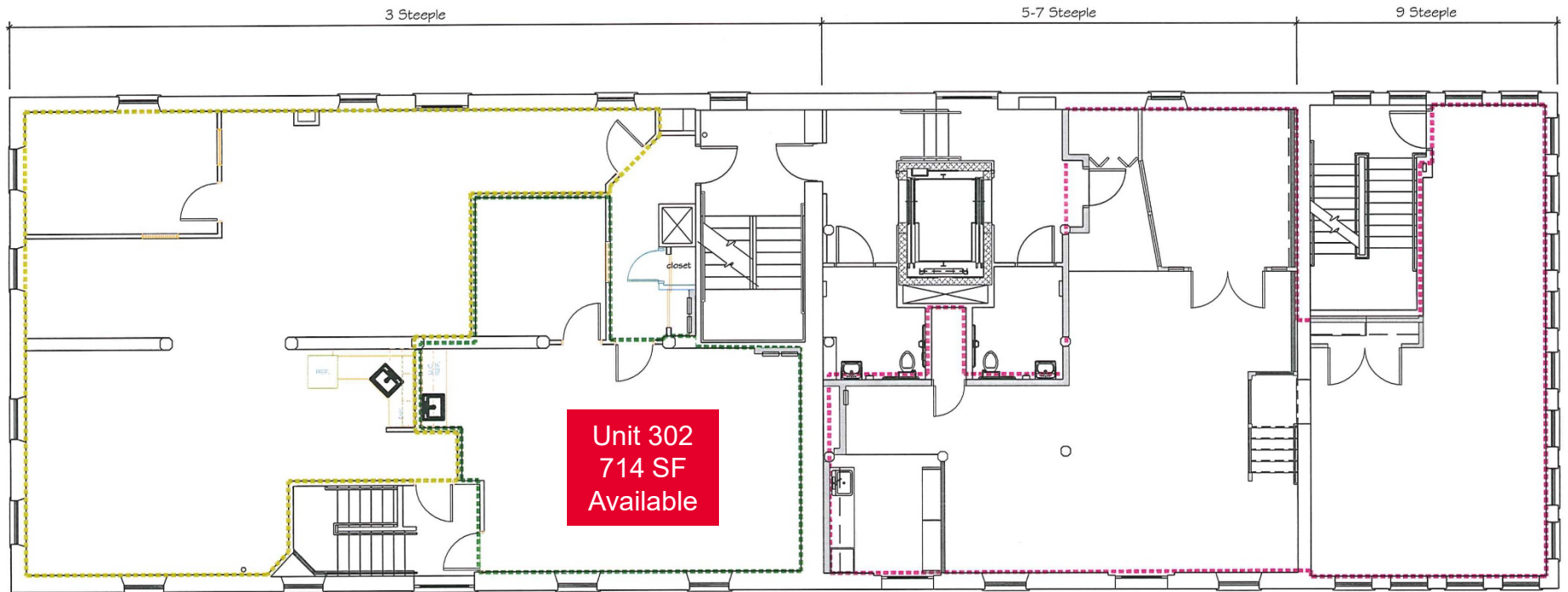


SECOND FLOOR

For more information, please contact:

Derek Brazeau
Multifamily Broker
+1 401 273 2052
dbrazeau@hayessherry.com

THIRD FLOOR SPACE

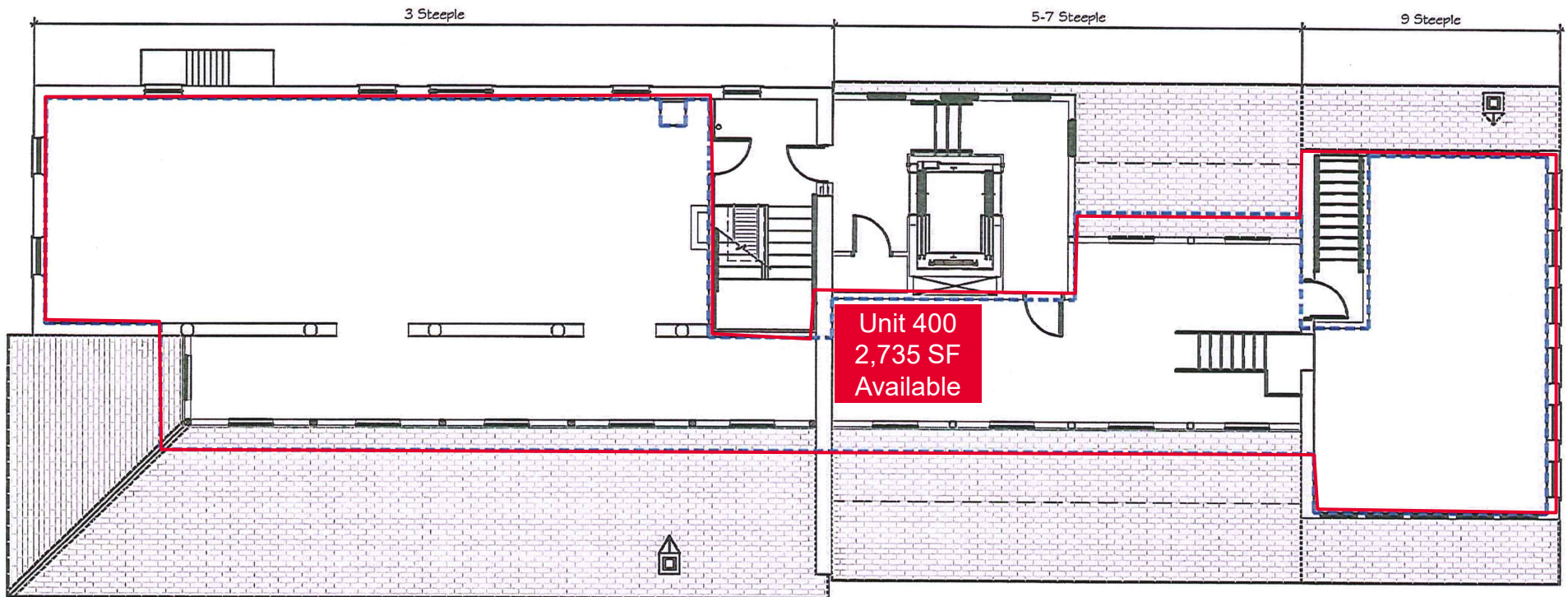


THIRD FLOOR

For more information, please contact:

Derek Brazeau
Multifamily Broker
+1 401 273 2052
dbrazeau@hayessherry.com

FOURTH FLOOR SPACE



FOURTH FLOOR

For more information, please contact:

Derek Brazeau
Multifamily Broker
+1 401 273 2052
dbrazeau@hayessherry.com