

2323 W CHESTNUT ST, ROGERS, AR

OFFICE SPACE FOR LEASE



COREY FUHRMAN
OFFICE SPECIALIST
479.504.2034
COREY@FOCUSCREGROUP.COM

5512 W WALSH LN, SUITE 201, ROGERS, AR 72758 | 479.254.7000 | FOCUSCREGROUP.COM

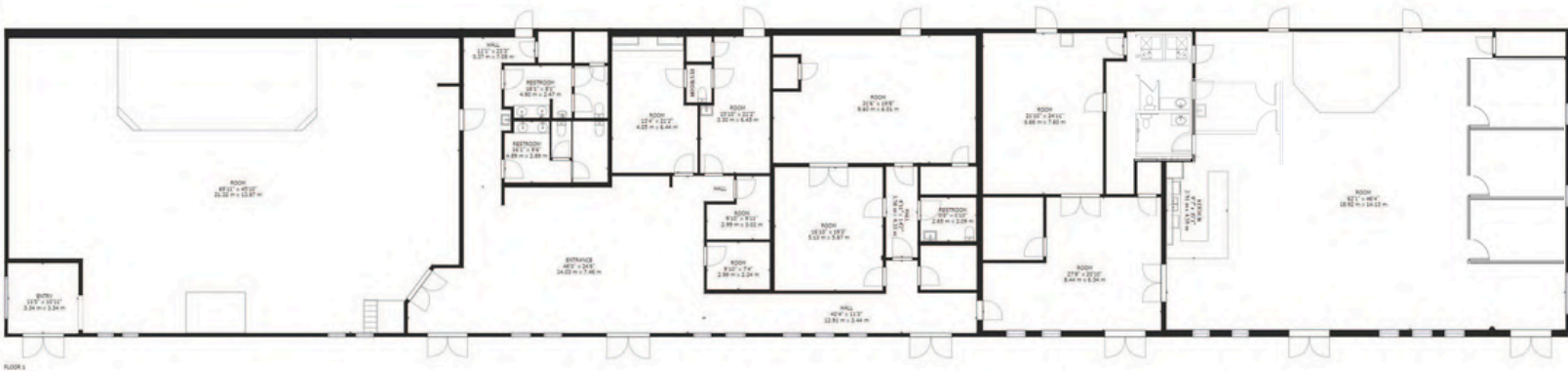
LEASE OVERVIEW

AVAILABLE:	11,616 SF
RENTAL RATE:	\$18.75 PSF
LEASE TYPE:	NNN

PROPERTY HIGHLIGHTS

PRIME OFFICE SPACE FOR LEASE IN WEST ROGERS, IDEALLY LOCATED NEAR FRISCO STATION MALL, DOWNTOWN ROGERS, AND WITH QUICK ACCESS TO W WALNUT STREET AND I-49. THE PROPERTY OFFERS AMPLE PARKING AND AN OPEN LAYOUT, MAKING IT PERFECT FOR MEDICAL, OFFICE, DAYCARE, THERAPY, OR SERVICE RETAIL USERS. JUST TWO MILES FROM DOWNTOWN ROGERS, 3.3 MILES FROM PINNACLE HILLS, AND FOUR MILES FROM THE NEW WALMART HOME OFFICE, THE SITE ALSO BENEFITS FROM 29,000 CARS PER DAY ALONG WALNUT STREET FOR MAXIMUM VISIBILITY AND ACCESSIBILITY.

VIRTUAL TOUR



2323 W CHESTNUT ST, ROGERS, AR 72756

AERIAL VIEW

DOWNTOWN ROGERS



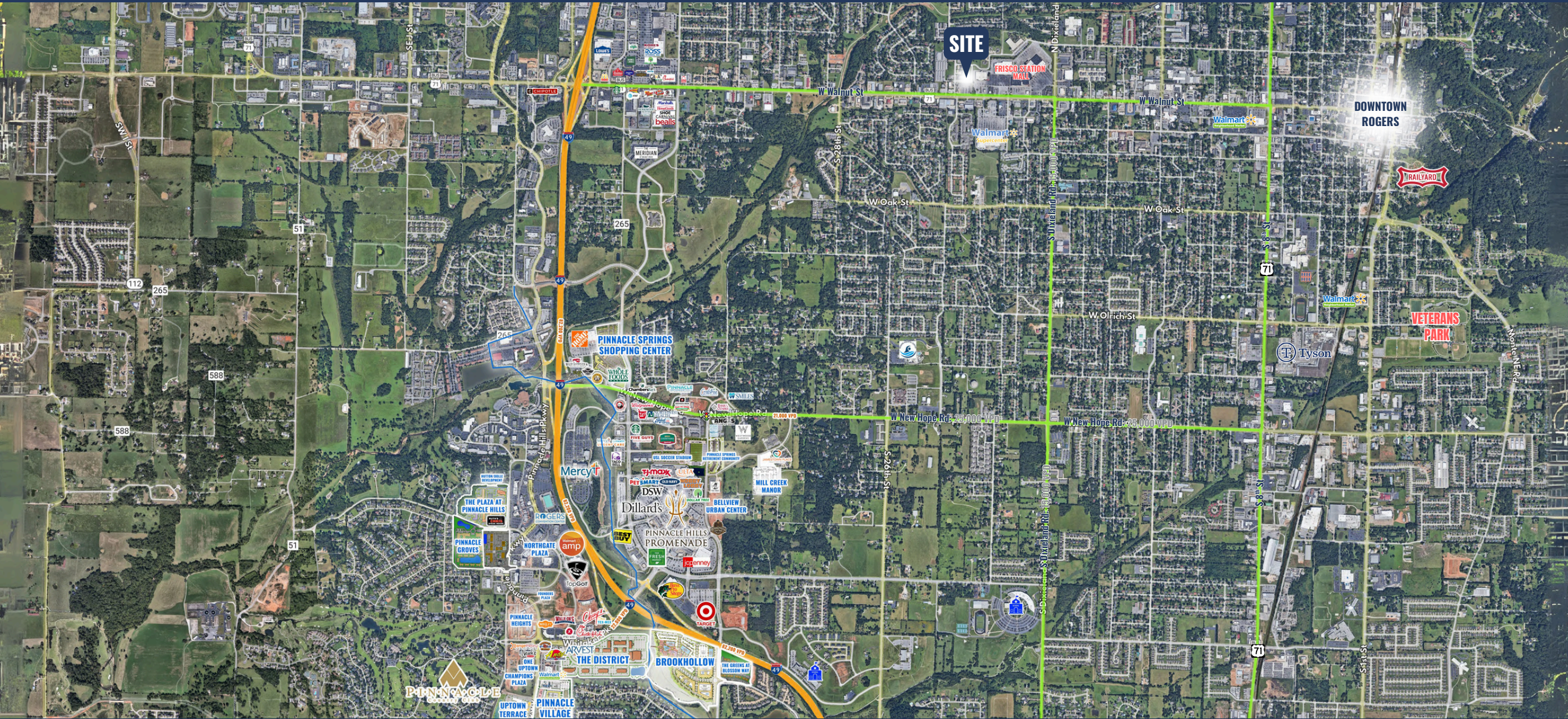
2323 W CHESTNUT ST, ROGERS, AR 72756

AERIAL VIEW



COREY FUHRMAN
OFFICE SPECIALIST
479.504.2034
COREY@FOCUSCREGROUP.COM

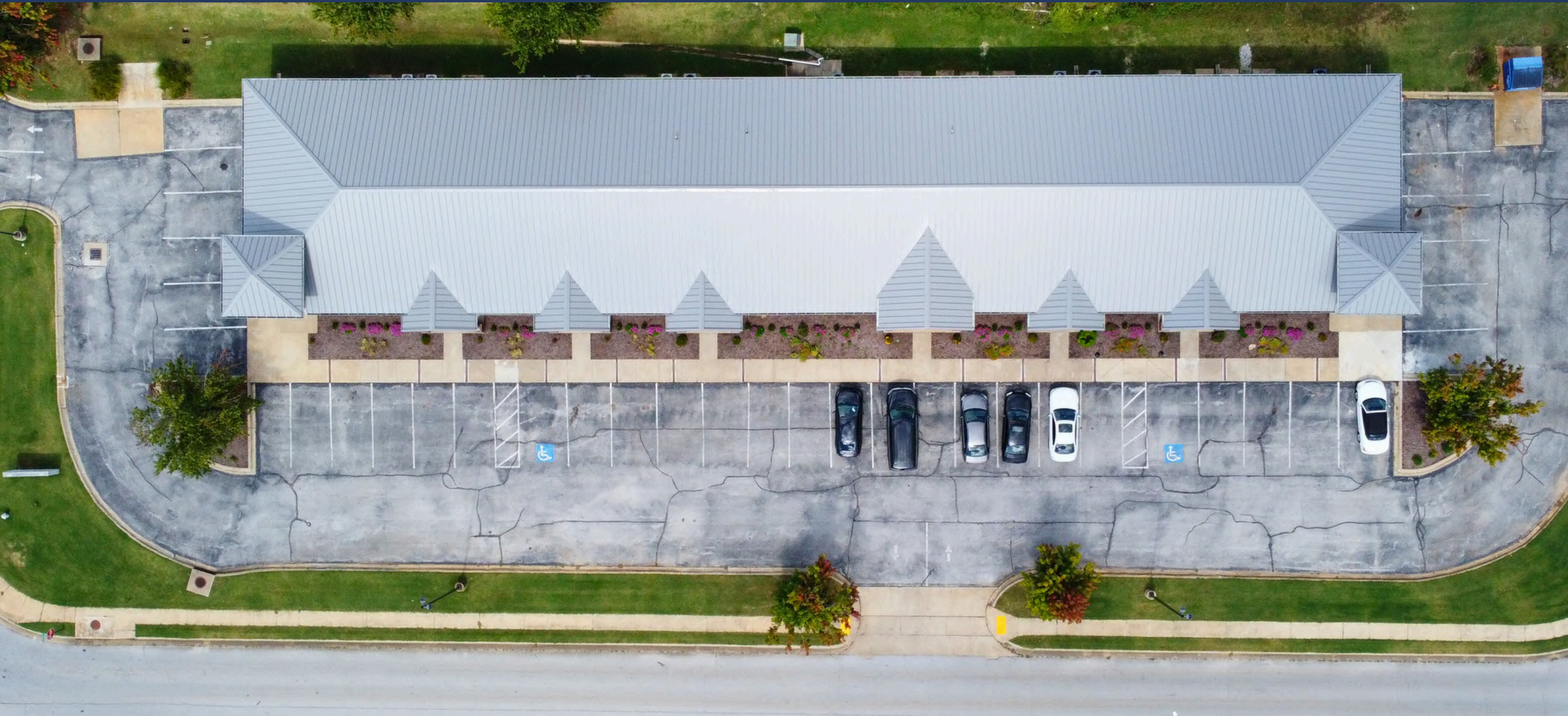
5512 W WALSH LN, SUITE 201, ROGERS, AR 72758 | 479.254.7000 | FOCUSCREGROUP.COM



COREY FUHRMAN
OFFICE SPECIALIST
479.504.2034
COREY@FOCUSCREGROUP.COM

2323 W CHESTNUT ST, ROGERS, AR 72756

AERIAL VIEW | PARKING



COREY FUHRMAN
OFFICE SPECIALIST
479.504.2034
COREY@FOCUSCREGROUP.COM

5512 W WALSH LN, SUITE 201, ROGERS, AR 72758 | 479.254.7000 | FOCUSCREGROUP.COM



FOCUS

COMMERCIAL REAL ESTATE

COREY FUHRMAN

OFFICE SPECIALIST

479.504.2034

COREY@FOCUSCREGROUP.COM

WE **FOCUS** ON REAL RESULTS FOR OUR CLIENTS

5512 W WALSH LN, SUITE 201, ROGERS, AR 72758 | 479.254.7000 | FOCUSCREGROUP.COM