

RETAIL FOR LEASE

WINTON PLACE SHOPPING CENTER

24032 HESPERIAN BOULEVARD, HAYWARD, CA 94545

MTC



AVAILABLE SPACES

Suite	Rate	Size	Type
24032	\$2.20 /mo	1,200	NNN

AVAILABLE SF:	1,200
BUILDING SF:	36,150
LEASE RATE:	\$2.20/SF
NNN:	\$0.38/SF
PARKING:	135 Total Spaces
TRAFFIC COUNT:	28,035 ADT
YEAR BUILT:	1955
ZONING:	CN: Neighborhood Commercial

PROPERTY OVERVIEW

In-line retail/service space of 1,200+/- SF located in the Winton Place Shopping Center. The center features 10 tenants with Harbor Freight as the anchor tenant. The available space offers an open floor plan with a private office. The shopping center is situated on a 2.03-acre site with 135 parking spaces. Ingress and egress from Hesperian Blvd and West Winton Ave.

Winton Place Shopping Center is located at the corner of Hesperian Blvd and West Winton Avenue, approximately one-half mile from I-880. Hesperian Blvd is a major six-lane commercial arterial street, with the Southland Regional Mall immediately to the east and the large West Hayward Industrial Park to the west.



MICHAEL TANZILLO & COMPANY

20980 Redwood Rd Suite 210
Castro Valley, CA 94546

MTC Michael Tanzillo & Co.
Commercial Real Estate Brokerage
Sales and Leasing

PAUL MADER, CCIM

Broker Associate
office: (510) 206-3156
cell: (510) 206-3156
paul@paulmaderccim.com
DRE #00795784

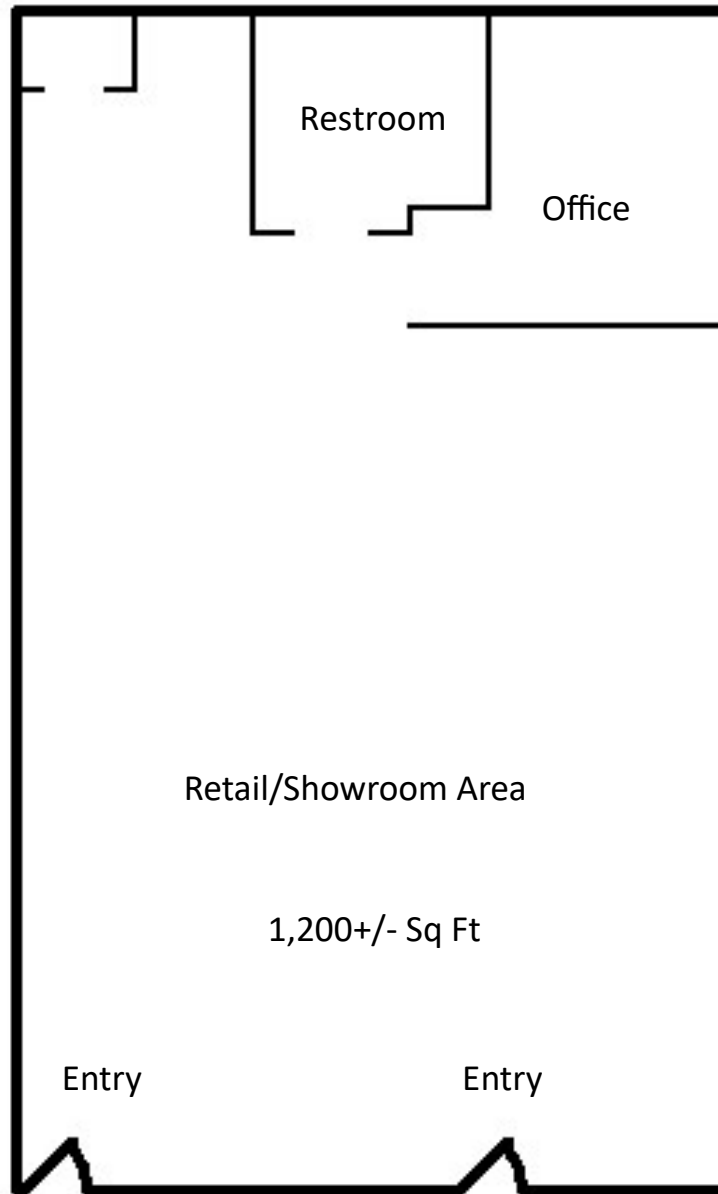
MIKE TANZILLO

Broker
office: 510-889-9157
mtcre@sbcglobal.net
DRE #00688066

FLOOR PLAN

24032 HESPERIAN BOULEVARD

MTC



24032 Hesperian Blvd, Hayward
Winton Place Shopping Center

MICHAEL TANZILLO & COMPANY

20980 Redwood Rd Suite 210
Castro Valley, CA 94546

MTC Michael Tanzillo & Co.
Commercial Real Estate Brokerage
Sales and Leasing

PAUL MADER, CCIM

Broker Associate
O: (510) 206-3156
C: (510) 206-3156
paul@paulmaderccim.com
DRE #00795784

MIKE TANZILLO

Broker
O: 510-889-9157
mtcre@sbcglobal.net
DRE #00688066