

Fully Approved 3.67 acre IOS Site with 16,836 SF Building  
10500 NW South River Drive, Medley FL 33178



## Key Highlights

- 16,836 SF Street Level Building
  - Building currently serves mostly as a maintenance facility for equipment and vehicles
- Separate 600 SF office building
- 3.67 Acre site
- 15 Drive-In doors
- Fueling station on-site
- 24 Car parking spaces
- 19 Trailer positions
- Flood zone X
- Built in 1965
- M-1, Light Manufacturing:
  - Vehicle/equipment maintenance, storage, parking and warehousing
- Please call for pricing

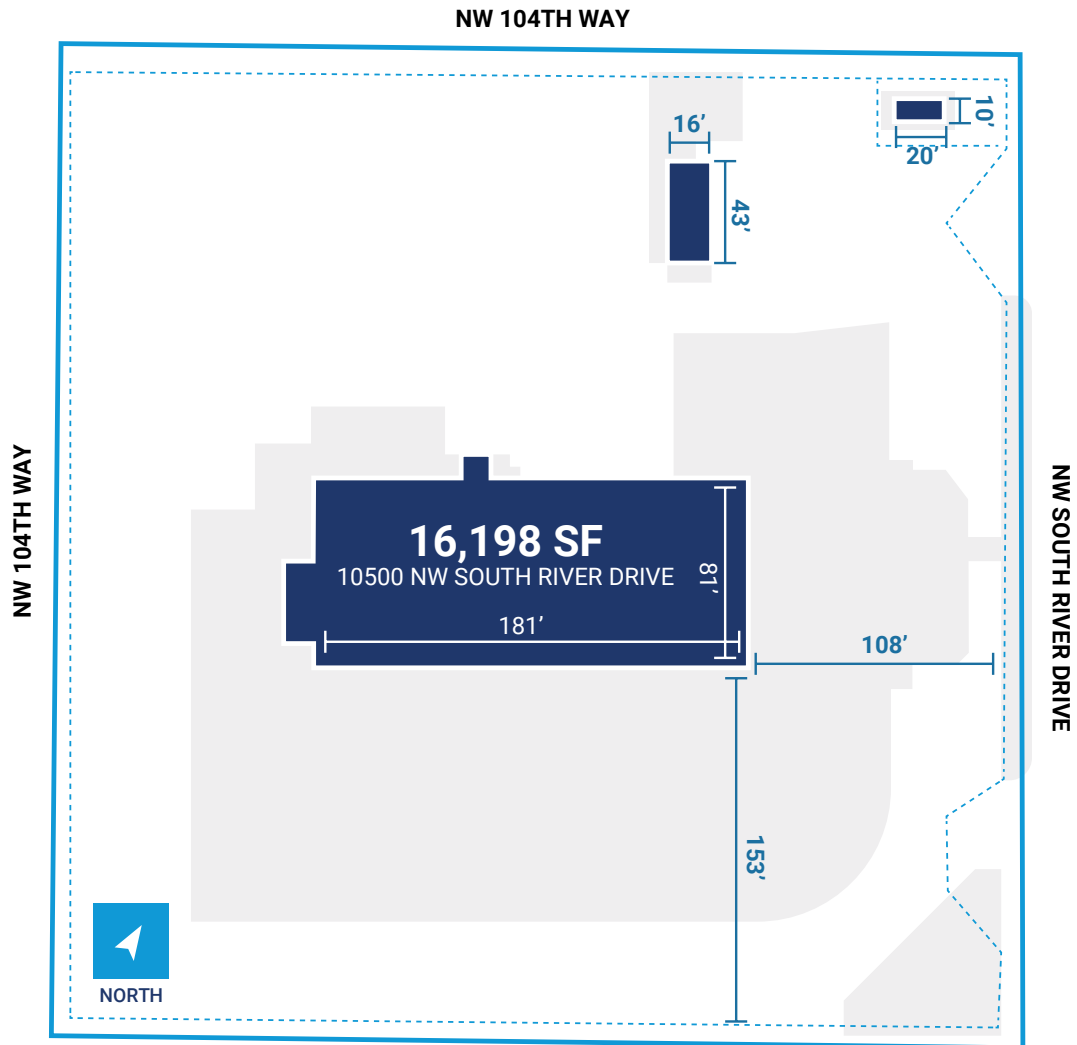


Fully Approved 3.67-acre IOS site | 10500 NW South River Drive, Medley FL 33178

THE LOCATION

# Fully Approved 3.67-acre IOS site

10500 NW South River Drive, Medley FL 33178



**Brian Smith**  
305 960 8403  
smith.brian@jll.com

**Matt Maciag**  
305 960 8409  
matt.maciag@jll.com

**Audley Bosch**  
305 960 8404  
audley.bosch@jll.com



centerpoint.com