



834

PACIFIC STREET
PROSPECT HEIGHTS, BROOKLYN

COMMUNITY FACILITY SPACE - 2,040 SF | DENSE BURGEONING RESIDENTIAL NEIGHBORHOOD

834 Pacific Street




Between Vanderbilt & Underhill Avenues

Available Space

Community Facility Space: 2,040 sf
(Step down with street access)

Possession: Immediate
Rent: Upon request

Comments

- Two (2) Four (4) ton Daikin heat pump HVAC units with condensers are already installed, and will be located pursuant to Tenant plan
- Great location for medical, day care, educational / tutoring or non-profit uses
- Partially below grade with windows — (2) bathrooms in place
- At base of 113-unit residential building located on the border of Park Slope, Boerum Hill, Clinton Hill, and Cobble Hill
- Bordering Pacific Park Brooklyn - a multi-building mixed-use complex expected to deliver approximately 6,430 housing units upon full construction completion, as well as new office and retail space
- Centrally located between The Brooklyn Hospital Center and Interfaith Medical Center
- 3 Blocks from  express and local subway lines and  at the Atlantic Ave/Barclays Center transportation hub; and vicinity of multiple bus lines that run through Prospect Heights including 

By the Numbers

Health Care / Social Assistance

2,182

Businesses - 1 Mile Radius

Households

80,051

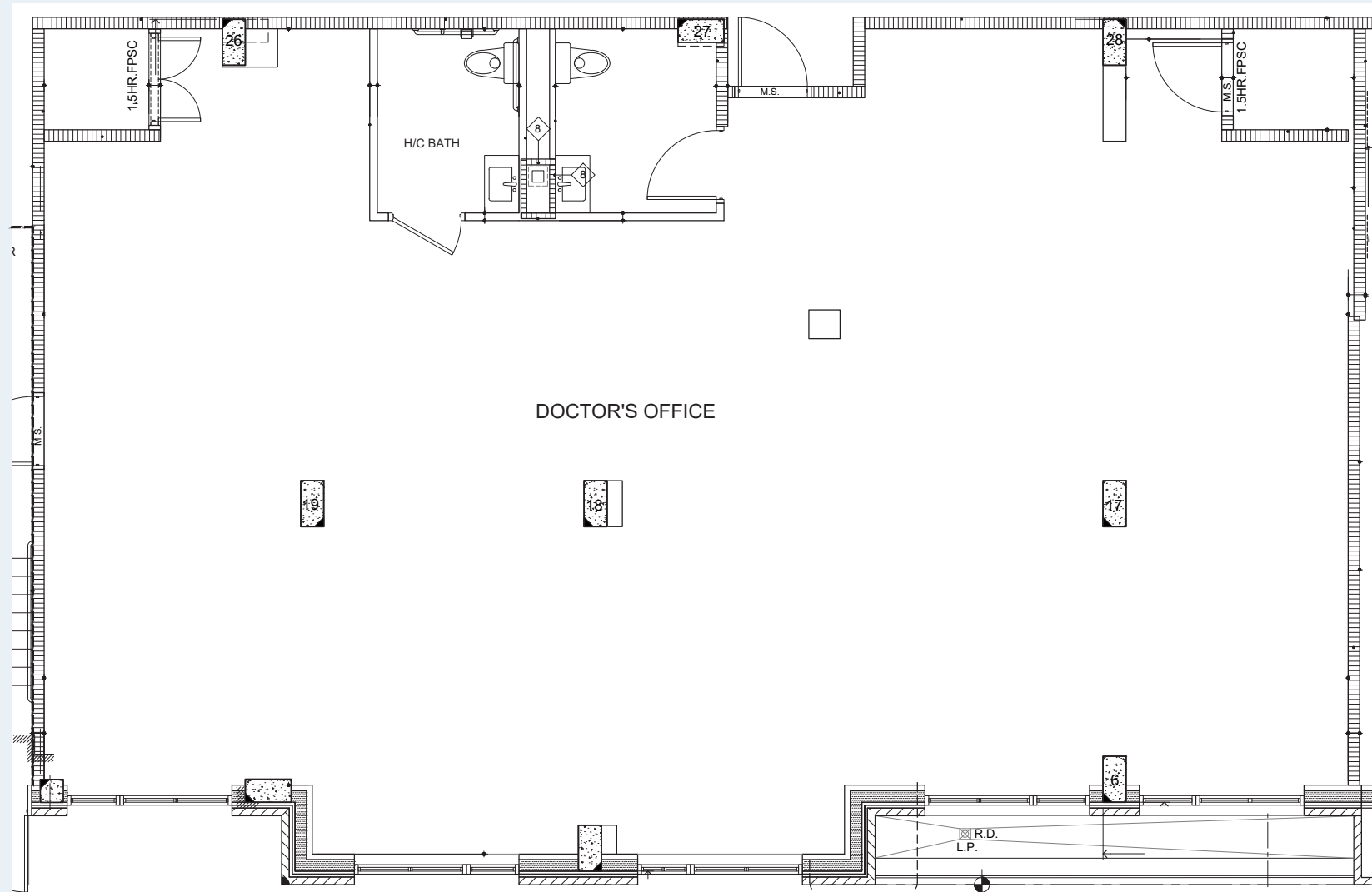
2024 est. - 1 Mile Radius

Household Income

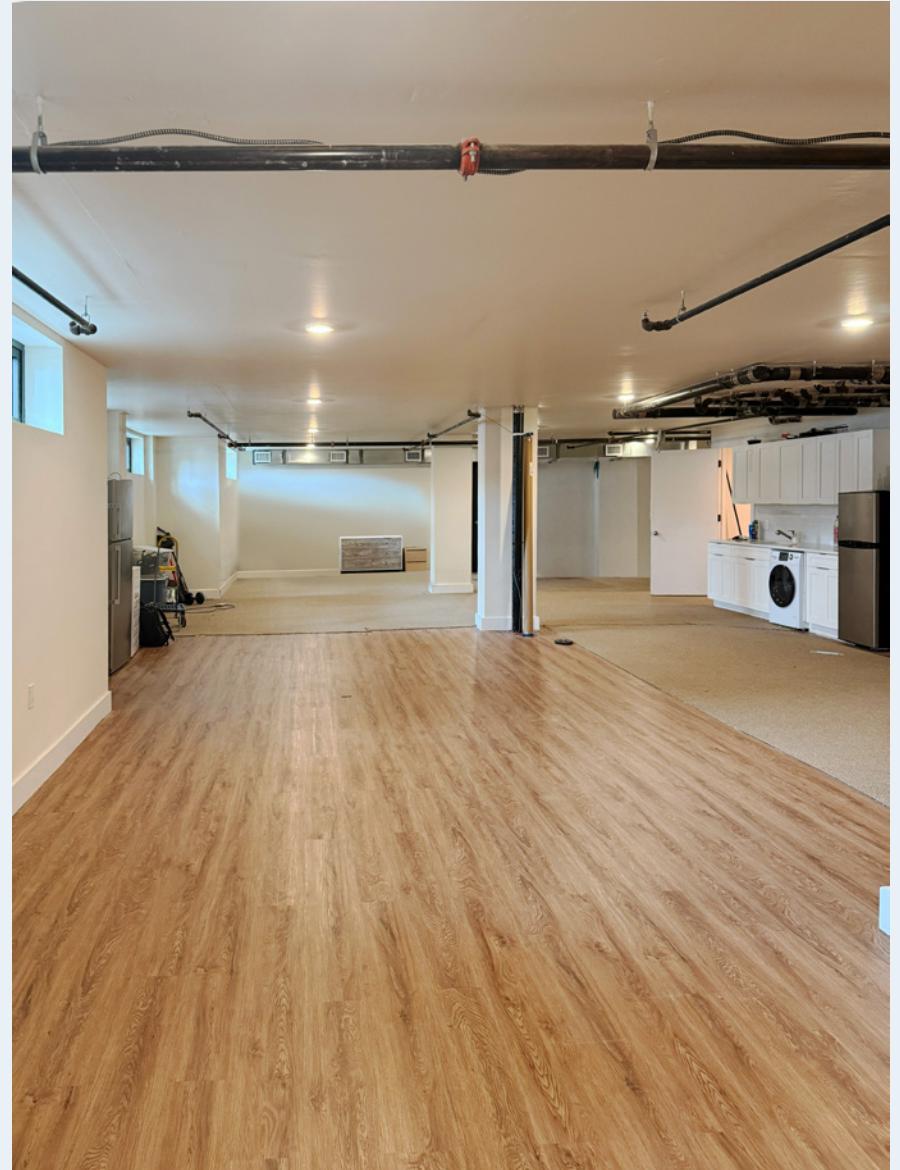
\$142,499

2024 Average

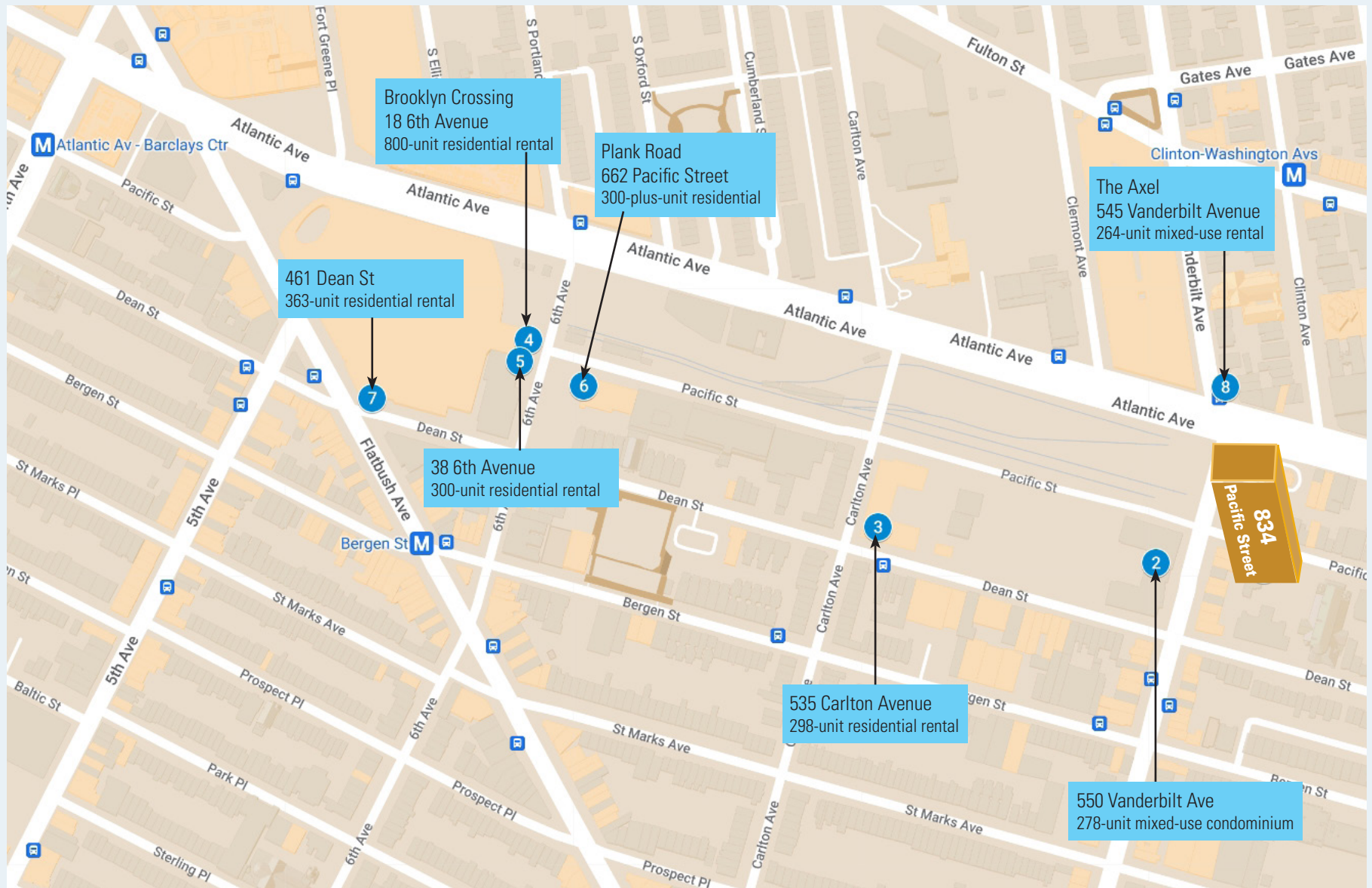
Floor Plan - 2,040 SF



Existing Conditions



Area Residential





For further information and/or inspection contact:

Mark Tergesen

Partner, Licensed Assoc. Real Estate Broker
212.400.9528 | mt@absre.com

Anthony Diorio

Licensed Real Estate Salesperson
518.894.1605 | adiorio@absre.com

ABS Partners Real Estate • 200 Park Avenue South, 10th Floor, New York, NY 10003 • 212.400.6060 • www.absre.com