



WOODLAND & MAIN

901 WOODLAND / 900 + 904 + 908 MAIN

901 WOODLAND ST

900 MAIN ST

904 MAIN ST

908 MAIN ST

wework

SUITE D

SUITE C

SUITE B

SUITE A

Butcher & Bee

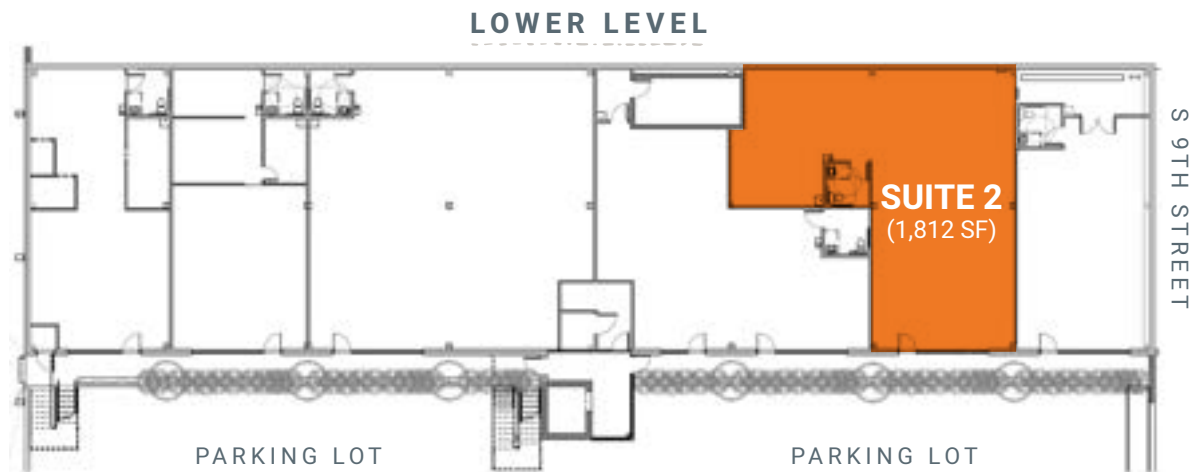
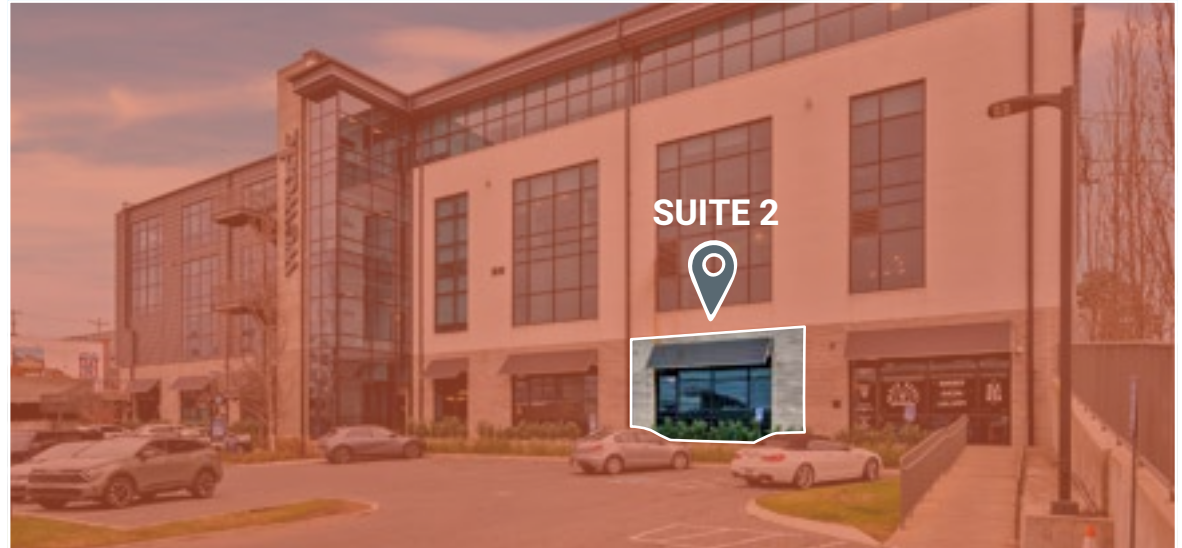


901 WOODLAND STREET

SUITE 2

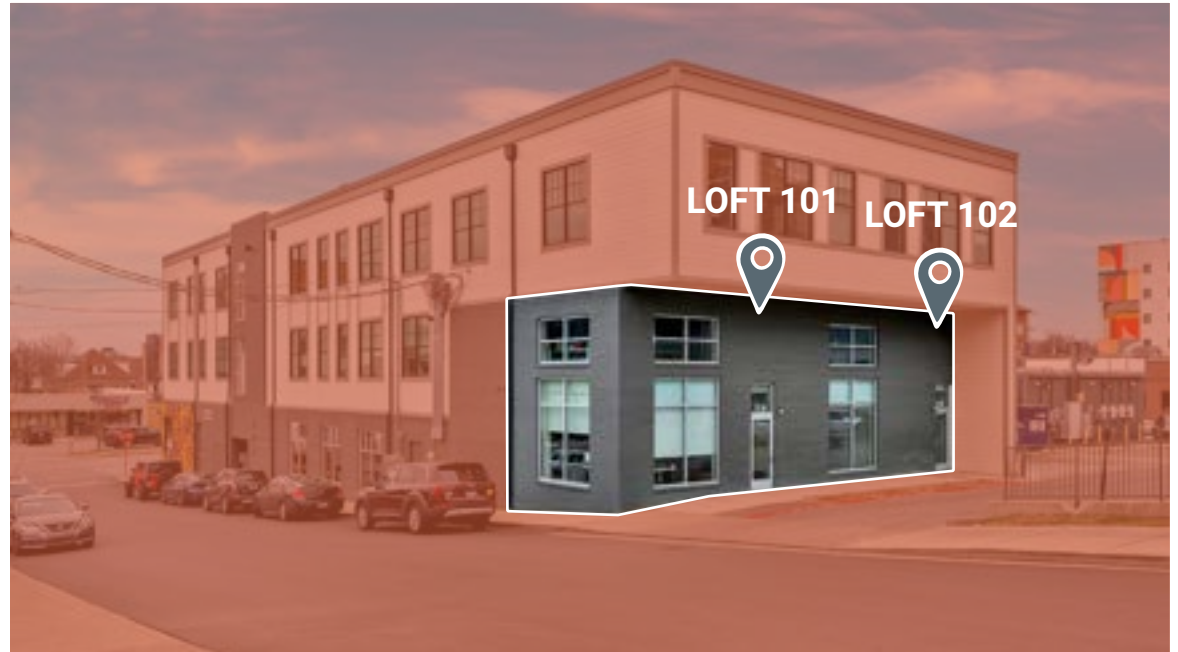
1,812 SF

OFFICE/RETAIL/MEDICAL



900 MAIN STREET

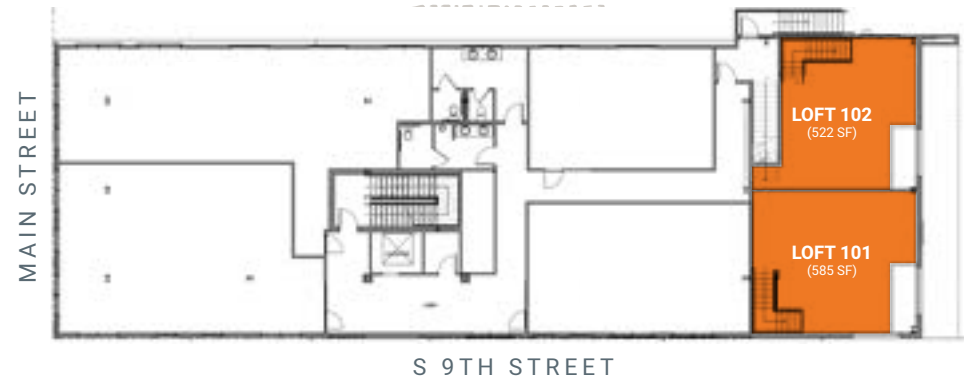
LOFT 101 & 102
1,277-2,585 SF
OFFICE/RETAIL/MEDICAL



1ST FLOOR



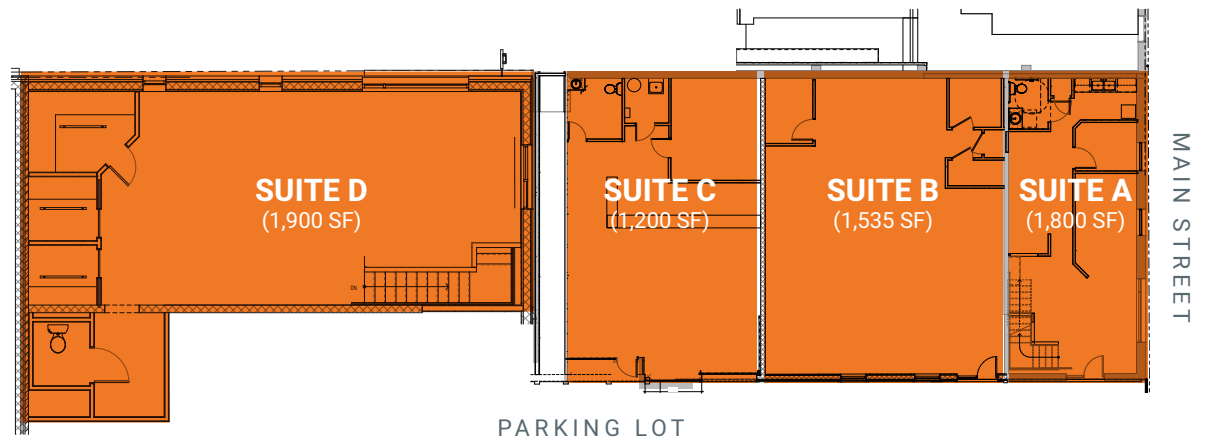
2ND FLOOR



904 MAIN STREET

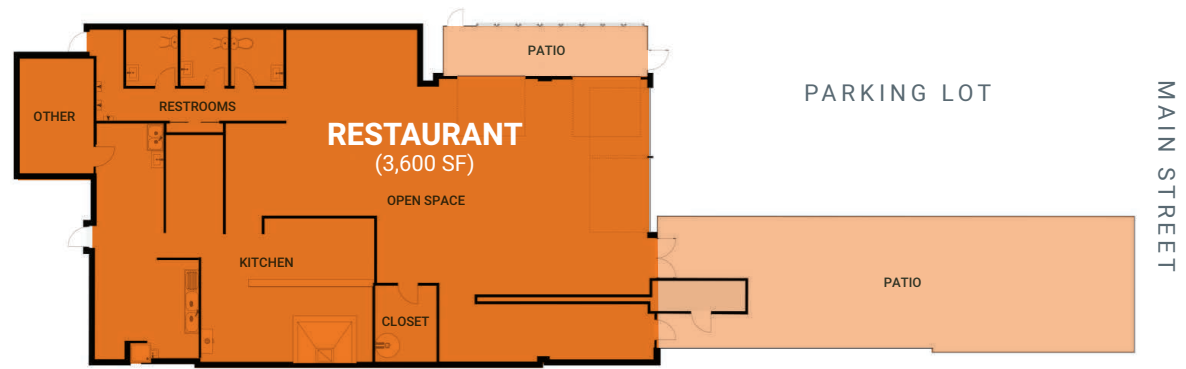
SUITE A, B, C, & D

1,200-6,435 SF
OFFICE/RETAIL/RESTAURANT



908 MAIN STREET

3,600 SF
RESTAURANT





PARKING



218 SPACES

Public & Street Parking - 3 min. walk

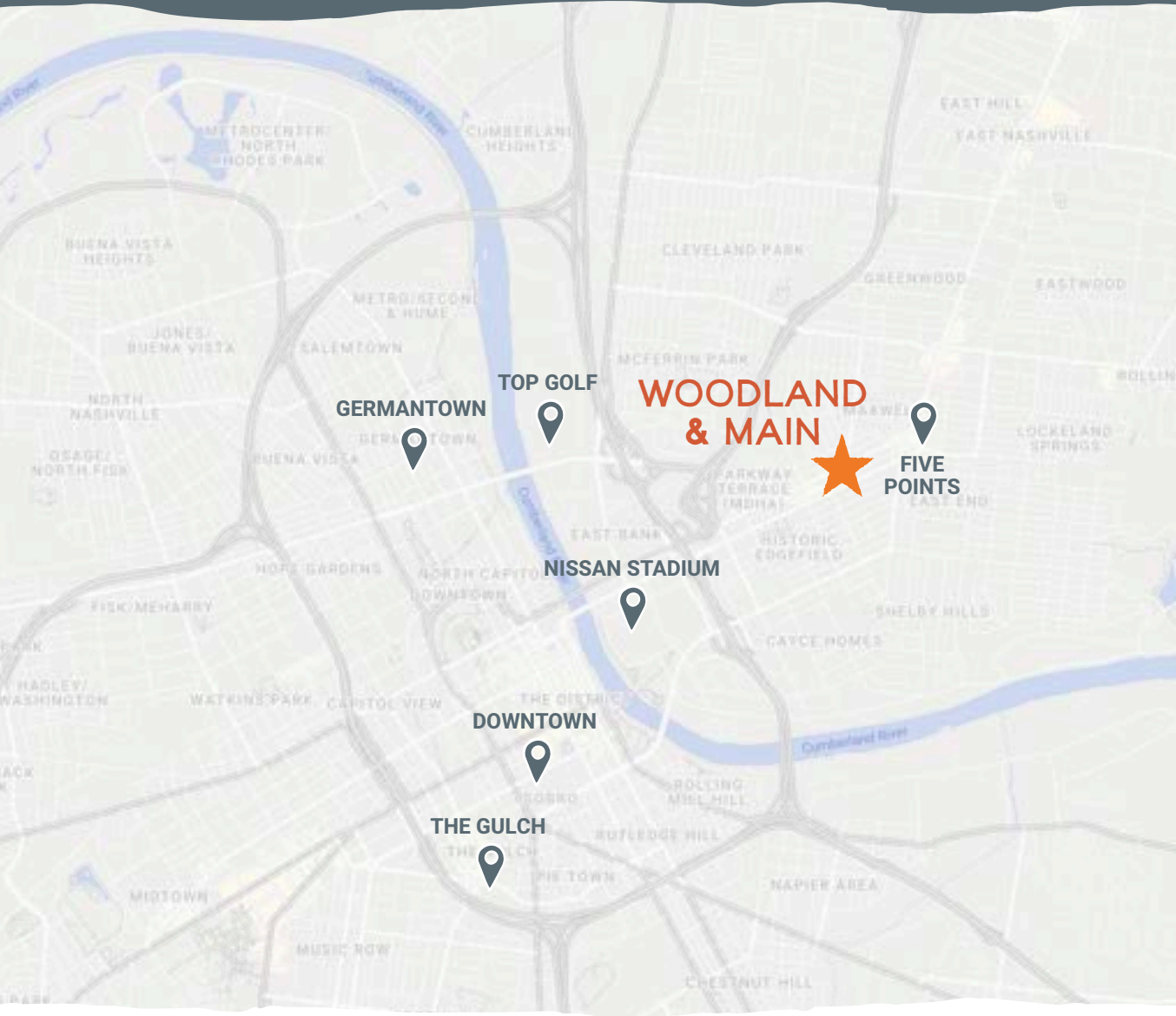


149 SPACES

On-Site Parking



PROXIMITY



FIVE POINTS

0.5 Miles

NISSAN STADIUM

1.1 Miles

DOWNTOWN

1.8 Miles

TOP GOLF

1.5 Miles

GERMANTOWN

2.1 Miles





WOODLAND & MAIN

901 Woodland Street
900 + 904 + 908 Main Street

CONTACT

CAMERON BICE

cbice@sagemontre.com

MATT COOPER

mcooper@sagemontre.com

LANIER DANIEL

ldaniel@sagemontre.com

A white banner with orange and grey text is mounted on a brick wall. The banner reads "WOODLAND & MAIN" in large orange letters, followed by "901 WOODLAND" and "900 + 904 + 908 MAIN" in grey, and "Leasing Retail & Office Space" in white on a dark grey background at the bottom.

WOODLAND
& 901 WOODLAND
900 + 904 + 908 MAIN
MAIN

Leasing Retail
& Office Space