



LINLO PROPERTIES

4 Lemoyne Drive
Suite 201
Lemoyne, PA 17043



Property Overview

Rental Rate:	\$19.95/SF/YR	Lot Size:	1.15 AC
Property Type:	Office	Rentable Building Area:	15,061 SF
Lease Type:	Gross (exc. In-Suite Janitorial)	Year Built/Renovated:	1986
TI Allowance:	Available	Security:	Secured
Façade Signage:	Available	Parking:	Surface

Major Roadway(s) Access:

US Rt. 15 and the Harvey Taylor Bridge.

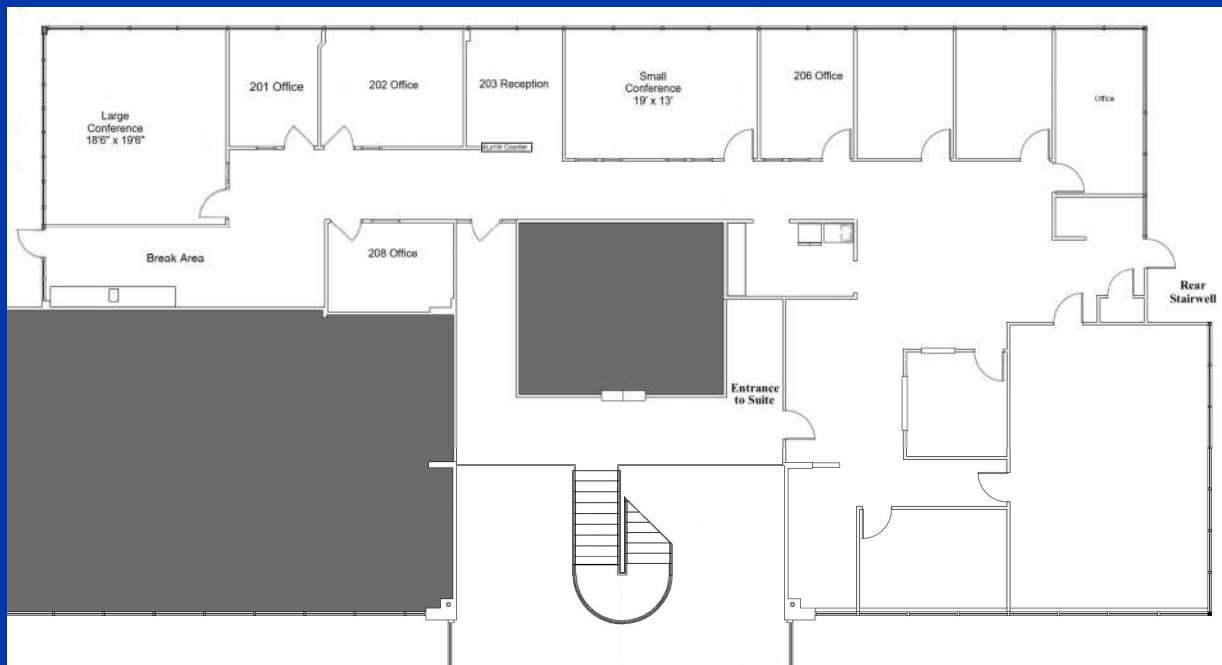
Property Highlights:

Large windows, natural light, local ownership and on-site property management.

THANK YOU

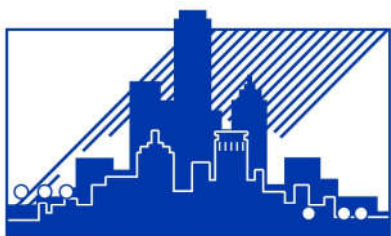
Thank you for your interest in 4 Lemoyne Drive in this office space and in Linlo Properties. If you would like additional information on this property, please contact a member of our leasing team or visit our website at www.linloproperties.com.

Available Suites: Suite 201 (5,735 RSF)



Leasing Team Contact:

Tracey J. Tressler
Sr. Director of Real Estate
ttressler@linloproperties.com
(717) 307-2002 Ext. 16



LINLO PROPERTIES

150 Corporate Center Drive; Suite 100
Camp Hill, PA 17011
(717) 307-2002