



Colliers

768 Daniel Webster Hwy, Merrimack, NH

Concept plan

High Bay Flex/Warehouse Build-to-Suit

Bob Rohrer

Managing Director
+1 603 860 2233
bob.rohrer@colliers.com

Doug Martin

Vice President
+1 603 493 8784
doug.martin@colliers.com

175 Canal Street, Suite 401

Manchester, NH 03101
+1 603 623 0100
colliersnh.com

Information herein has been obtained from sources deemed reliable, however its accuracy cannot be guaranteed by Colliers International | New Hampshire & Maine. The user is required to conduct their own due diligence and verification. Colliers International | New Hampshire & Maine is independently owned and operated.

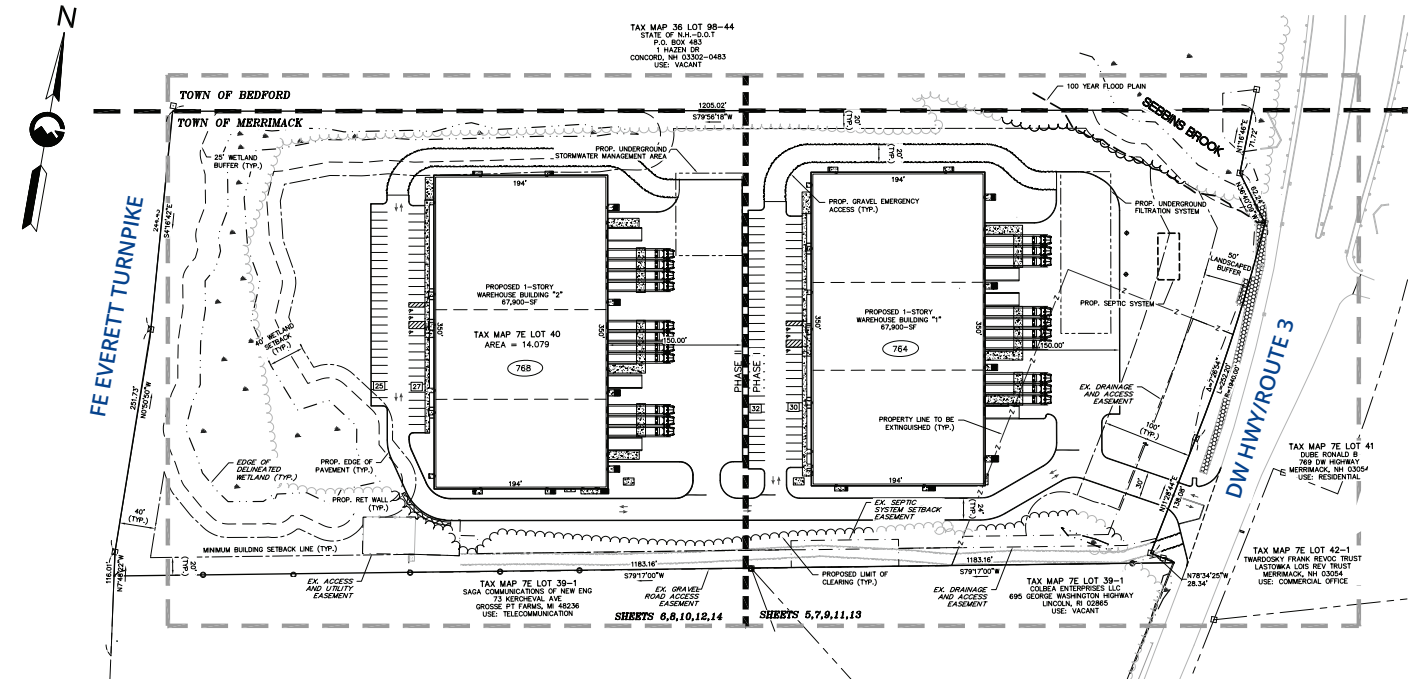
Accelerating success.

768 Daniel Webster Hwy, Merrimack, NH

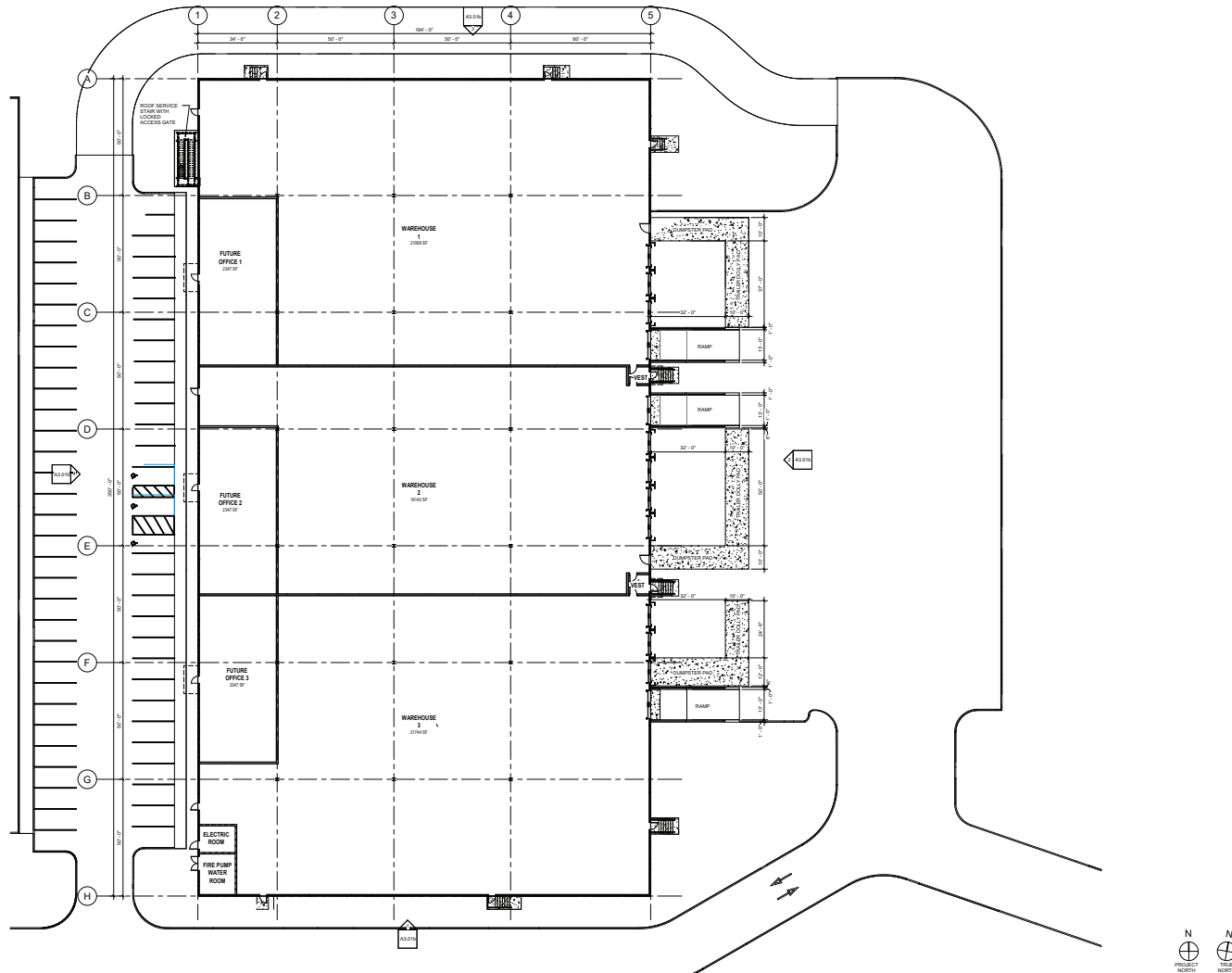
Specifications



Site Plan



Sample Floor Plan



Specifications

Address:	768 Daniel Webster Highway
Location:	Merrimack, NH 03054
Building Type:	Flex/warehouse/distribution
Year Built:	TBD
Total Building SF:	Up to 135,800± in 2 buildings
Available SF:	16,000± to 135,800±
Acreage:	14.97±
Floors:	1
Clear Height:	28'± to 32'±
Loading Docks & Drive-ins:	Customizable
Road Frontage:	550'± on Daniel Webster Highway 500'± on FE Everett Turnpike
Utilities:	Municipal water & septic Natural gas
Zoning:	Commercial/Industrial
Parking:	TBD
Accessibility:	Located between Route 3 and the Everett Turnpike at Exit 13
Lease Rate:	Call for details



Quick access to
& from Route 3
highway system



Highly visible



New construction
build-to-suit



Flexible floorplans

For Lease

U-HAUL

Raymond Wiczorek Drive



15,036± AADT NHDOT 2023

EXIT 13



63,449± AADT NHDOT 2022

Site lines approximate

Property Highlights

- APPROVED! 16,000± to 135,800± SF available in two adjacent buildings
- Units to include drive-ins and loading docks; number TBD per tenant
- Flexible floor plans allow for different configurations
- 2025 groundbreaking anticipated
- Property will be serviced by public water, septic, natural gas, and electric
- Well-positioned between Route 3/Daniel Webster Highway and the Everett Turnpike at Exit 13 and Raymond Wiczorek Drive



175 Canal Street, Suite 401
Manchester, NH 03101
+1 603 623 0100

500 Market Street, Suite 9
Portsmouth, NH 03801
+1 603 433 7100

217 Commercial Street, Suite 201
Portland, ME 04101
+1 207 560 8000