

# OUTPARCEL FOR SALE, LEASE OR BUILD TO SUIT

## W. DUPREE STREET OUTPARCEL

ANGIER, NC 27501



### AVAILABILITY

- Outparcel : 2.24 Acres
- PIN Numbers:  
0674-62-5780.000  
0674-62-7700.000
- Sale price: \$385,000

### PERMITTED USES

- Zoning: General Commercial
- Permitted uses: Quick serve restaurant, brewery, Coffee shop with drive-thru, Daycare, Veterinarian, Bank/financial office, and Law Office

### PROPERTY HIGHLIGHTS

- Located at the intersection of W. Dupree Street and Rawls Church Road
- Located just north of Downtown Angier

### DEMOGRAPHICS

	3 Miles	5 Miles	7 Miles
Population	16,914	42,393	88,228
Avg. HH Income	\$100,033	\$108,146	\$111,230
No. of Businesses	451	774	2,117
No. of Employees	2,895	5,455	15,963
Daytime Population	12,283	29,185	67,343

Source: ESRI 2025

Grier Godwin  
ggodwin@lee-associates.com  
D 919-591-2272

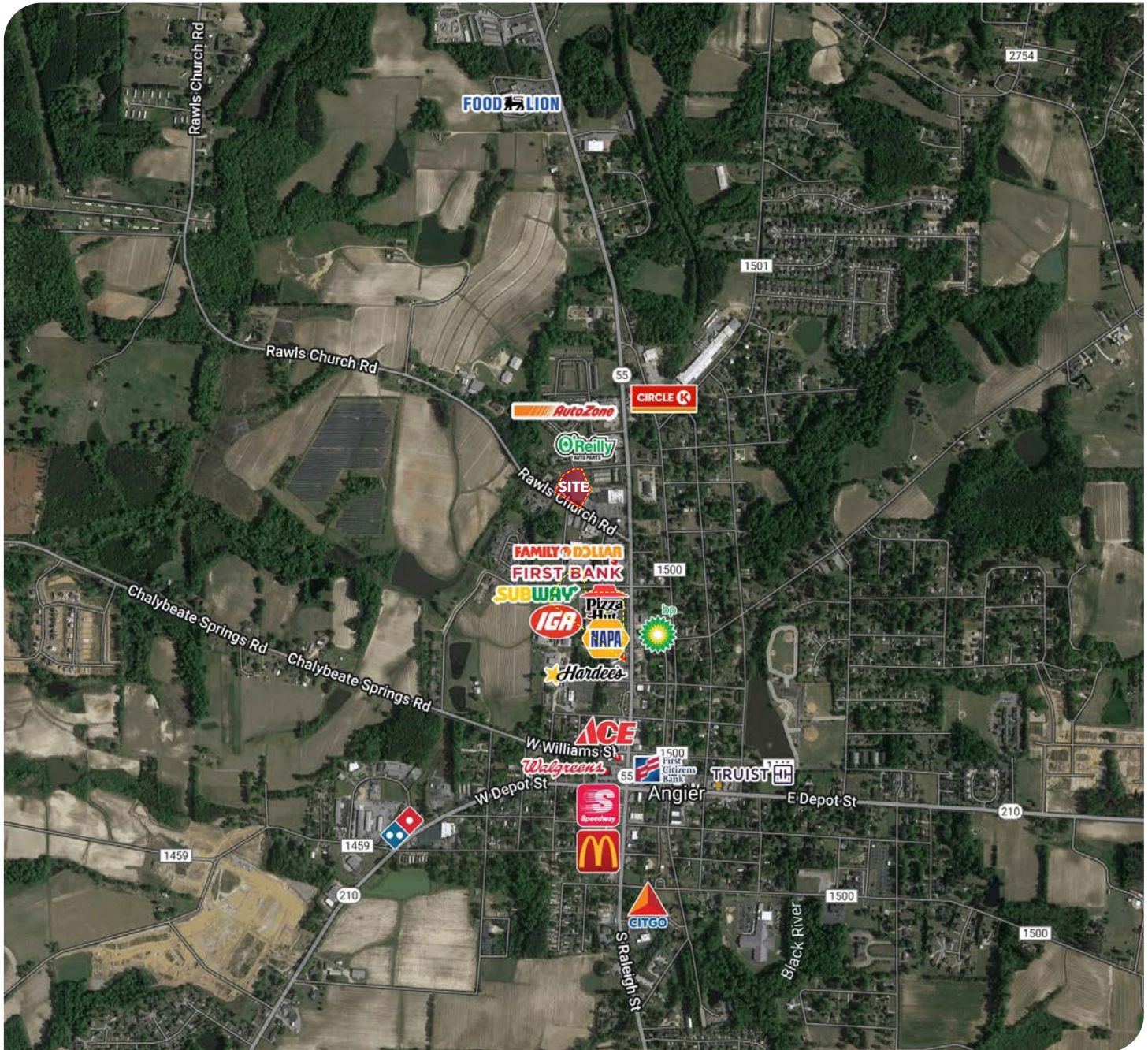
Dan Koeller  
dkoeller@lee-associates.com  
D 919-591-2274

All information furnished regarding property for sale, rental or financing is from sources deemed reliable, but no warranty or representation is made to the accuracy thereof and same is submitted to errors, omissions, change of price, rental or other conditions prior to sale, lease or financing or withdrawal without notice. No liability of any kind is to be imposed on the broker herein.



**OUTPARCEL FOR SALE, LEASE OR BUILD TO SUIT**  
**W. DUPREE STREET OUTPARCEL**  
ANGIER, NC 27501

**LEE & ASSOCIATES**  
COMMERCIAL REAL ESTATE SERVICES  
RALEIGH • DURHAM • WILMINGTON



Grier Godwin  
ggodwin@lee-associates.com  
D 919-591-2272

Dan Koeller  
dkoeller@lee-associates.com  
D 919-591-2274

All information furnished regarding property for sale, rental or financing is from sources deemed reliable, but no warranty or representation is made to the accuracy thereof and same is submitted to errors, omissions, change of price, rental or other conditions prior to sale, lease or financing or withdrawal without notice. No liability of any kind is to be imposed on the broker herein.