



# NATHAN & ASSOCIATES, INC.

7600 East Doubletree Ranch Road | Suite #150 | Scottsdale | Arizona | 85258  
Phone: 480.367.0700 | Fax: 480.367.8341 | [www.nathanandassociatesinc.com](http://www.nathanandassociatesinc.com)

## HALEY HILLS

**FLORENCE, ARIZONA**

EXCLUSIVELY LISTED BY:  
**NATHAN & ASSOCIATES, INC.**



# NATHAN & ASSOCIATES, INC.

7600 East Doubletree Ranch Road | Suite #150 | Scottsdale | Arizona | 85258  
Phone: 480.367.0700 | Fax: 480.367.8341 | [www.nathanandassociatesinc.com](http://www.nathanandassociatesinc.com)

## HALEY HILLS

### **LOCATION:**

Located at the north of Franklin Road and East and West of Pipeline Road in the Town of Florence, Arizona.

### **SIZE:**

± 229.34 Acres

### **PARCELS:**

200-31-026F, 026G, 026H and 027A

### **PRICE:**

\$2,293,400 or \$10,000 per Acre

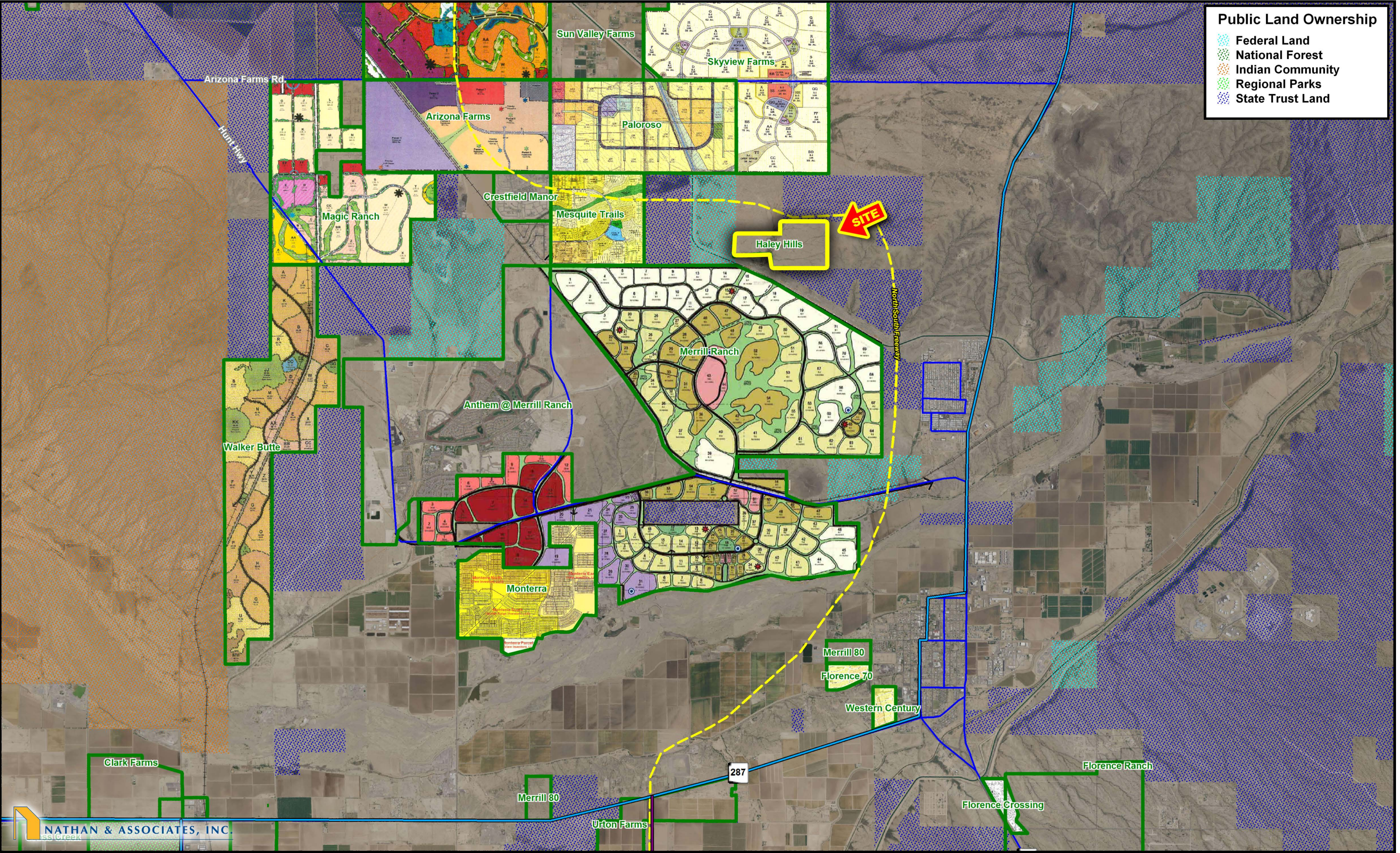
### **TERMS:**

Cash

### **PROPERTY TAXES:**

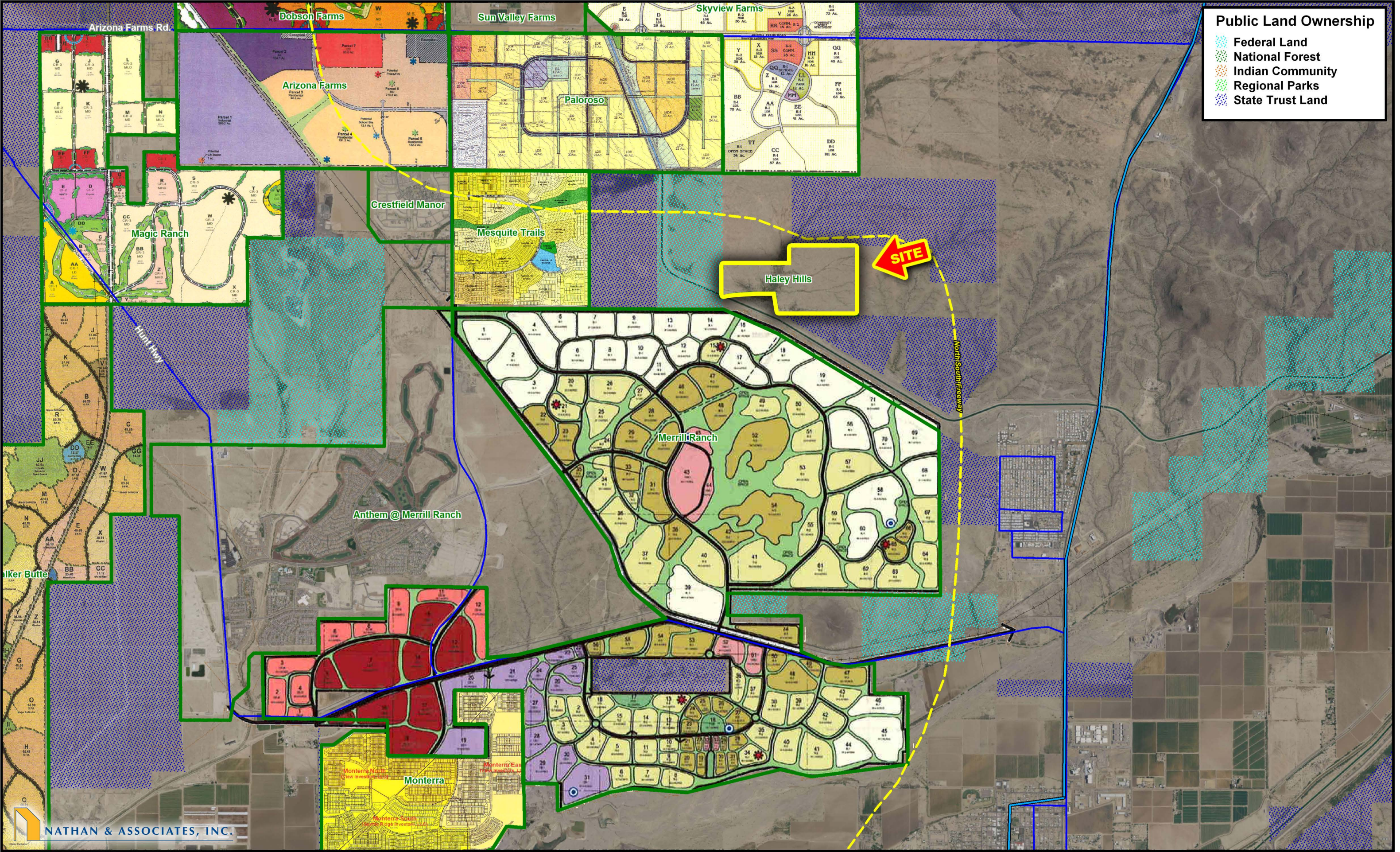
\$55.66 per Year (2012)

# Hunt Highway Submarket - Haley Hills



This map was produced using data from private and governmental sources deemed to be reliable. The information herein is provided without representation or warranty.

# Hunt Highway Submarket - Haley Hills



This map was produced using data from private and governmental sources deemed to be reliable. The information herein is provided without representation or warranty.



6	5	4	3	2	1
7	8	9	10	11	12
18	17	16	15	14	13
19	20	21	22	23	24
30	29	28	27	26	25
31	32	33	34	35	36

SECTION



Revised: 04/17/2012

By: **TH**



**Pinal County Assessor**

THIS MAP DOES NOT REPRESENT A SURVEY. NO LIABILITY IS ASSUMED FOR THE ACCURACY OF THE DATA DELINEATED HEREIN, EITHER EXPRESSED OR IMPLIED BY PINAL COUNTY OR ITS EMPLOYEES. THIS MAP IS COMPILED FROM OFFICIAL RECORDS, INCLUDING PLATS, SURVEYS, RECORDED DEEDS AND CONTRACTS, AND ONLY CONTAINS INFORMATION REQUIRED FOR THE PINAL COUNTY ASSESSOR'S OFFICE PURPOSES.

