

CBRE

2701
media center drive

LOS ANGELES

**10 MINUTES FROM
DOWNTOWN LA**



**For more information,
please contact:**

Bennett Robinson
Vice Chairman
+1 818 907 4608
bennett.robinson@cbre.com
Lic. 00984312

Gregory Barsamian
Senior Vice President
+1 818 406 3658
gregory.barsamian@cbre.com
Lic. 00873206

AVAILABLE FOR LEASE

±48,341 SF INDUSTRIAL SPACE

AVAILABLE 4/01/2026

Property Highlights



Prime Location Off
N San Fernando Road
and the 2 Fwy



Freestanding Building
with Distinction



Within Secure LA Media
Tech Center Business Park



Lease Rate/SF

\$1.75 PSF/ NNN



Available SF

±48,341 SF



Zoning

LAM2



Office SF

±17,022 SF



GL Doors/Dim

4/ 12'X14'



DH Doors/Dim

2/ 12'X15'



Clear Height

22' ft.*



Restrooms

4



Power

A: 600 V: 277/480 O: 3 W: 4

Lessee to verify all information

*Currently climate controlled warehouse has a drop ceiling at 22 ft. clearance. Actual clearance is 24 ft minimum.

2701 MEDIA CENTER DR, LOS ANGELES, CA

Floor Plan

Ground Level

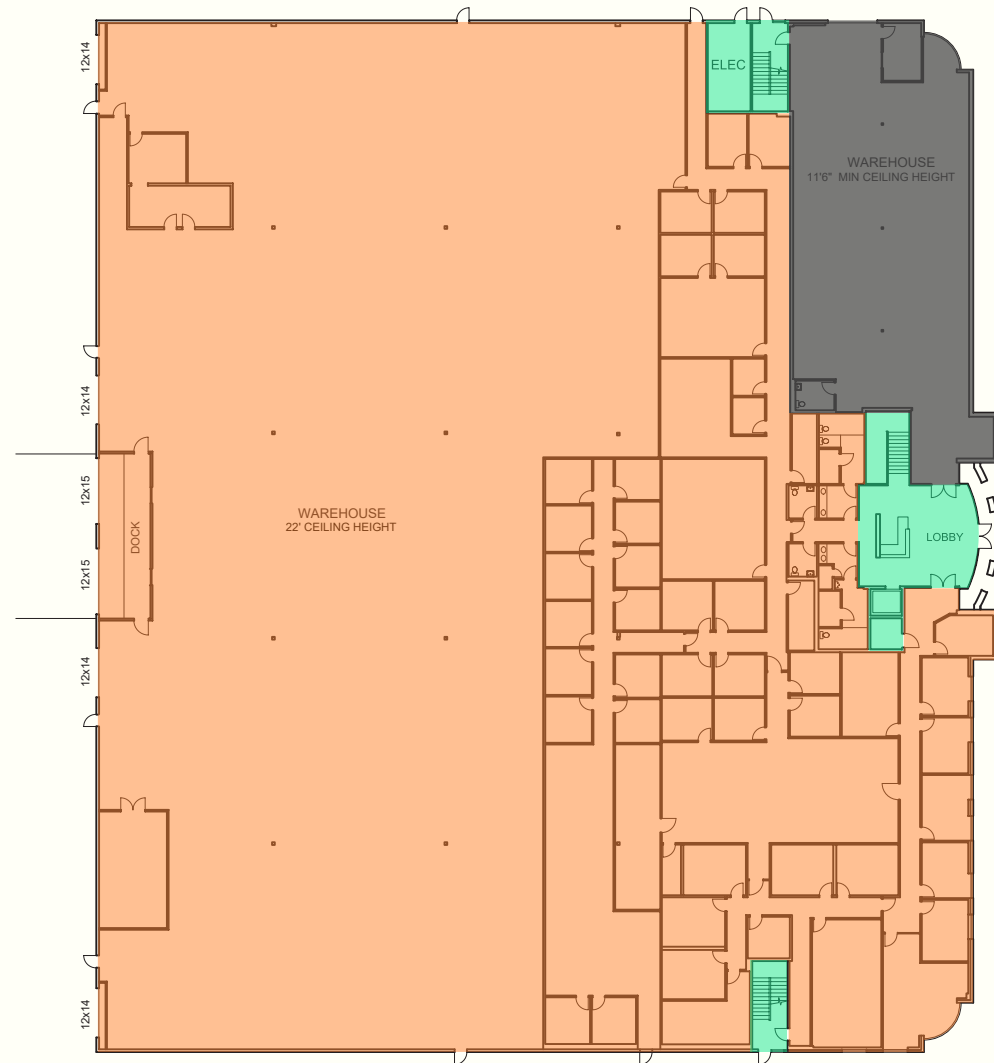
BOMA Industrial Area Calculations

Ground Level 48,341 SF
Total Available

Office 17,022 SF

Warehouse 31,319 SF

- Available
- Common Area
- Not Available



© 2025 CBRE, Inc. All rights reserved. This information has been obtained from sources believed reliable but has not been verified for accuracy or completeness. CBRE, Inc. makes no guarantee, representation or warranty and accepts no responsibility or liability as to the accuracy, completeness, or reliability of the information contained herein. You should conduct a careful, independent investigation of the property and verify all information. Any reliance on this information is solely at your own risk. CBRE and the CBRE logo are service marks of CBRE, Inc. All other marks displayed on this document are the property of their respective owners, and the use of such marks does not imply any affiliation with or endorsement of CBRE. Photos herein are the property of their respective owners. Use of these images without the express written consent of the owner is prohibited.

2701 MEDIA CENTER DR, LOS ANGELES, CA