

COMMERCIAL LEASE OPPORTUNITY

RIGHT SPACE | RIGHT PLACE



Eleventh Street Business Park

1933-1939 W. 11th St., Upland, CA 91786

PRESENTED BY **Warren Tsang**

Senior Associate
951.283.1888
DRE Lic #01993434

Michelle Tsang

Senior Associate
951.283.8868
DRE Lic #01992330

Max Tsang

Associate
909.539.5055
DRE #02244101

MGR
Real Estate

Small Industrial Warehouses 1,673 - 2,213 RSF available for LEASE.

Features:

- Move-in ready warehouse with small office area and restroom.
- Power: 100a-200a/208-240v 3 phase power (to be verified)
- Ground-level OH Doors in the front
- 16'-18' ceiling ht.
- Central HVAC in the office area.
- Located on 11th Street between Central Ave and Benson
- Easy accessibility to the I-10, I-210, Foothill Blvd. (Route 66)

Commercial | Residential | Property Management

3800 E. Concourse St., Ste. 350 Ontario, CA 91764 PH: 909.981.4466
ONTARIO 909-981-4466 VICTORVILLE 760-955-7888 CARLSBAD 760-683-8102
www.mgrealestate.com BRE ID# 01841921

All items on this page are deemed to be accurate, but should be viewed as reference only. MGR Real Estate, Inc. does not warranty/guaranty the validity of any information on this page.

1933-1939 W. Eleventh St., Upland, CA 91730

Warehouse for Lease

1933-1939 W. Eleventh St., Upland, CA 91730

Suite #	Rentable Sq. Ft.	Description
1933-E	1,966	1 Reception, 1 Office, 1 Restroom, and warehouse with 1 GL roll up door. HVAC unit for office and warehouse area. Power: 100a/120-208v 3phase (tenant to verify). 16"-18' ceiling height
1939-B	2,213	1 Reception, 4 Office, 2 Restrooms, 1,340sf Mezzanine (\$350), and a warehouse with 1 GL roll up door. HVAC unit for office and warehouse area. Power: 100a/120-208v 3phase (tenant to verify). 16"-18' ceiling height
1939-F	1,673	1 Reception Area, 1 Office, 1 Restroom, and a warehouse with 1 GL roll up door. HVAC unit for office and warehouse area. Power: 100a/120-208v 3phase (tenant to verify). 16"-18' ceiling height



For more information, contact:

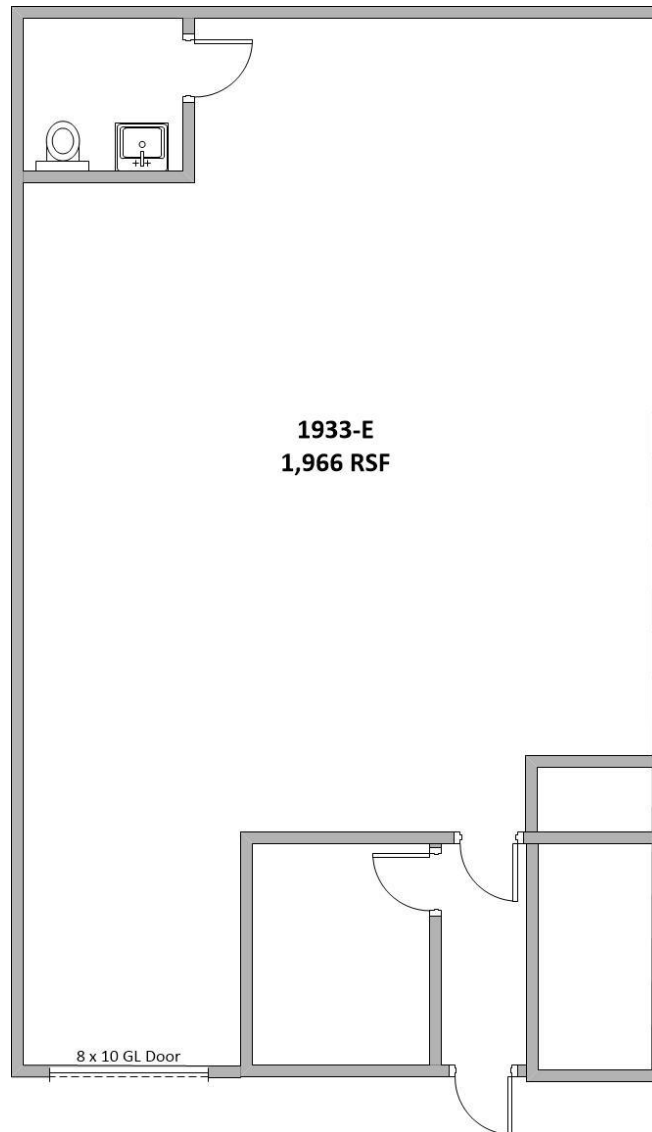
Michelle Tsang Senior Associate DRE #01992330 Mobile: (951) 283-8868	Warren Tsang Senior Associate DRE. #01993434 Mobile: (951) 283-1888	Maximilian Tsang Associate DRE #02244101 Mobile: (909) 539-5055
---	--	--

*All items on this page are deemed to be correct but should be viewed as reference only. MGR Real Estate, Inc. does not warranty/guaranty the validity of any information on this page.

MGR Real Estate Inc. 3800 Concourse, Suite 100, Ontario, California 91764 | Office: 909-981-4466 / Fax: 909-981-6267

Commercial Brokerage • Residential Real Estate • Property Management
 Ontario-909-981-4466 Victorville-760-955-7888 Carlsbad-760-683-8102 Newport Beach-949-287-5200
 WWW.MGRREALESTATE.COM | Lic. #01841921

1933 W. Eleventh St., Upland, CA 91730
Suite E
1,966 RSF
(Not to scale)



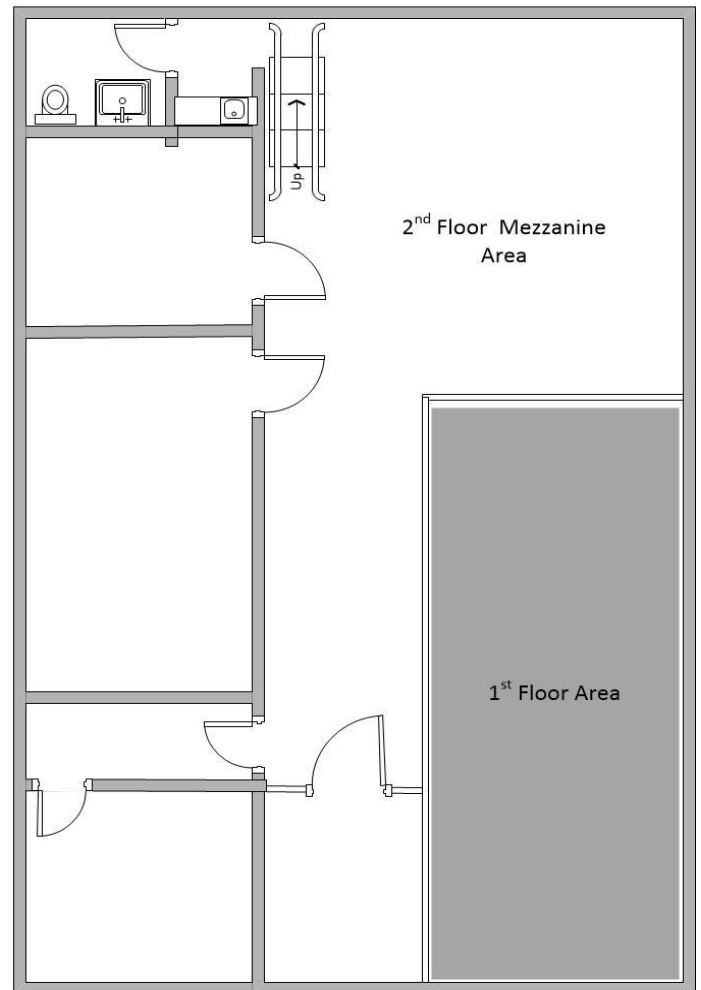
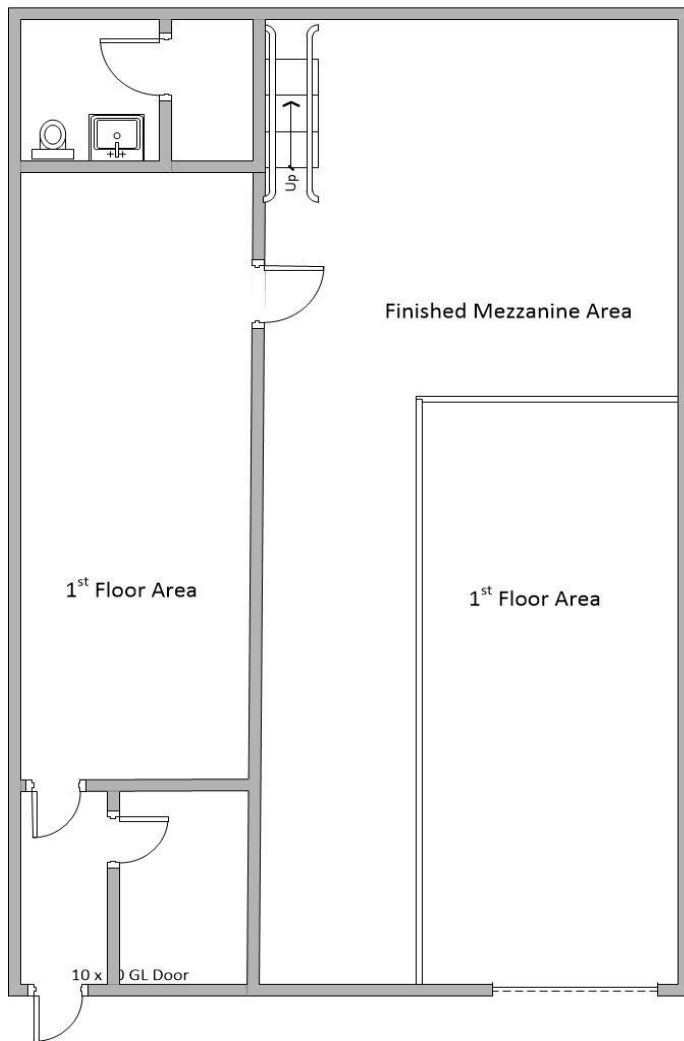
For more information, contact:

Michelle Tsang Senior Associate DRE #01992330 Mobile: (951) 283-8868	Warren Tsang Senior Associate DRE. #01993434 Mobile: (951) 283-1888	Maximilian Tsang Associate DRE #02244101 Mobile: (909) 539-5055
--	---	---

*All items on this page are deemed to be correct but should be viewed as reference only. MGR Real Estate, Inc. does not warranty/guaranty the validity of any information on this page.

MGR Real Estate Inc. 3800 Concourse, Suite 100, Ontario, California 91764 | Office: 909-981-4466 / Fax: 909-981-6267

1939 W. Eleventh St., Upland, CA 91730
Suite B (2 Stories)
2,213 RSF with 1,340 SF Mezzanine
(Not to scale)



For more information, contact:

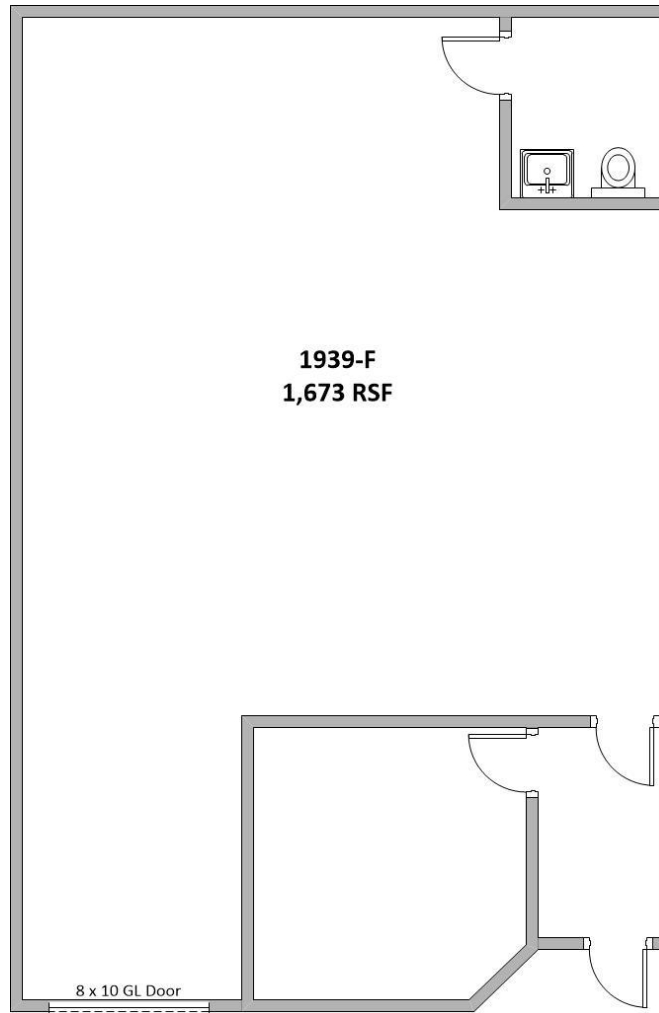
<p style="text-align: center;">Michelle Tsang Senior Associate DRE #01992330 Mobile: (951) 283-8868</p>	<p style="text-align: center;">Warren Tsang Senior Associate DRE. #01993434 Mobile: (951) 283-1888</p>	<p style="text-align: center;">Maximilian Tsang Associate DRE #02244101 Mobile: (909) 539-5055</p>
---	--	--

*All items on this page are deemed to be correct but should be viewed as reference only. MGR Real Estate, Inc. does not warranty/guaranty the validity of any information on this page.

MGR Real Estate Inc. 3800 Concourse, Suite 100, Ontario, California 91764 | Office: 909-981-4466 / Fax: 909-981-6267

Commercial Brokerage • Residential Real Estate • Property Management
Ontario-909-981-4466 Victorville-760-955-7888 Carlsbad-760-683-8102 Newport Beach-949-287-5200
WWW.MGRREALESTATE.COM | Lic. #01841921

1939 W. Eleventh St., Upland, CA 91730
Suite F
1,673 RSF
(Not to scale)



For more information, contact:

Michelle Tsang Senior Associate DRE #01992330 Mobile: (951) 283-8868	Warren Tsang Senior Associate DRE. #01993434 Mobile: (951) 283-1888	Maximilian Tsang Associate DRE #02244101 Mobile: (909) 539-5055
--	---	---

*All items on this page are deemed to be correct but should be viewed as reference only. MGR Real Estate, Inc. does not warranty/guaranty the validity of any information on this page.

MGR Real Estate Inc. 3800 Concourses, Suite 100, Ontario, California 91764 | Office: 909-981-4466 / Fax: 909-981-6267

Commercial Brokerage • Residential Real Estate • Property Management
Ontario-909-981-4466 Victorville-760-955-7888 Carlsbad-760-683-8102 Newport Beach-949-287-5200
WWW.MGRREALESTATE.COM | Lic. #01841921