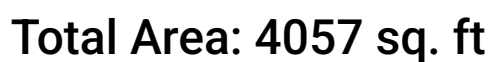
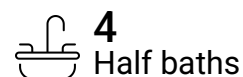


819 Dixwell Avenue, Hamden, New Haven County, Connecticut,
United States, 06511



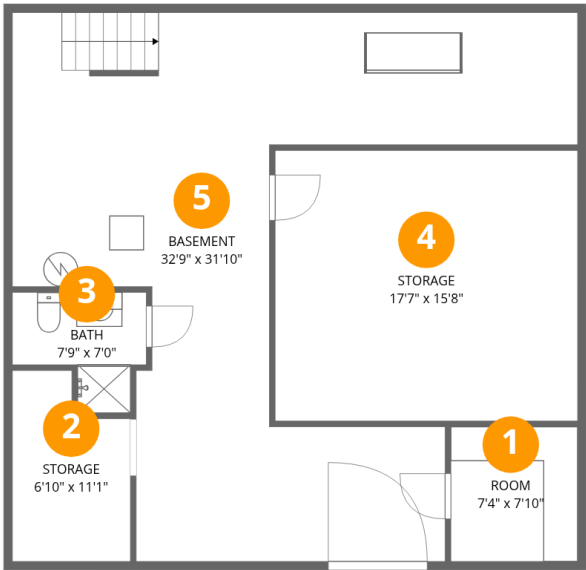
Excluded: Room 63 sq. ft, Basement 596 sq. ft, Storage 618 sq. ft, Bath 41 sq. ft, Hall 21 sq. ft, Patio 1383 sq. ft, Walls: 254 sq. ft

Property summary



Home data report

819 Dixwell Avenue, Hamden, New Haven County, Connecticut,
United States, 06511



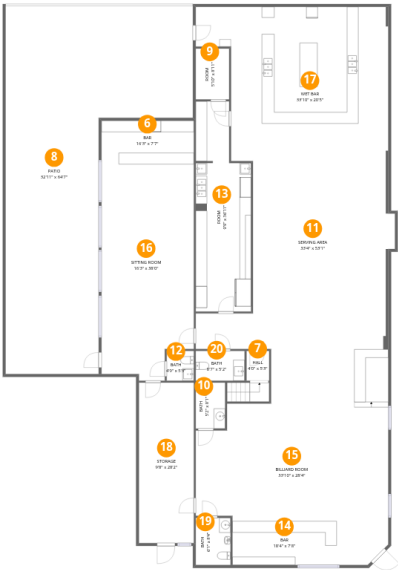
Room dimensions

Floor 1 Below grade Total:0sqft Excluded: 1046sqft

#		Dimensions	sqft	Counted as living area
1	Room	7'4" x 7'10"	58 sq. ft	No
2	Storage	6'10" x 11'1"	66 sq. ft	No
3	Bath	7'9" x 7'0"	41 sq. ft	No
4	Storage	17'7" x 15'8"	276 sq. ft	No
5	Basement	32'9" x 31'10"	573 sq. ft	No

Home data report

819 Dixwell Avenue, Hamden, New Haven County, Connecticut,
United States, 06511



Room dimensions

Floor 2 Total:4057sqft Excluded: 1676sqft

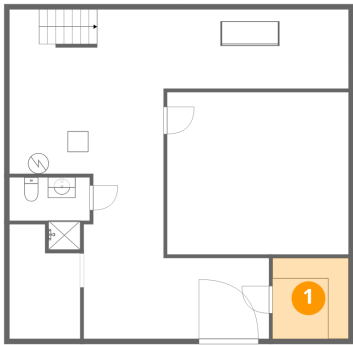
#		Dimensions	sqft	Counted as living area
6	Bar	16'3" x 7'7"	124 sq. ft	Yes
7	Hall	4'0" x 5'3"	21 sq. ft	No
8	Patio	32'11" x 64'7"	1383 sq. ft	No
9	Room	5'10" x 8'11"	53 sq. ft	Yes
10	Bath	5'2" x 8'1"	42 sq. ft	Yes
11	Serving Area	33'4" x 53'1"	1308 sq. ft	Yes
12	Bath	4'9" x 5'3"	25 sq. ft	Yes
13	Room	9'9" x 36'11"	316 sq. ft	Yes
14	Bar	18'4" x 7'8"	141 sq. ft	Yes
15	Billiard Room	33'10" x 28'4"	730 sq. ft	Yes
16	Sitting Room	16'3" x 38'0"	581 sq. ft	Yes

Home data report

819 Dixwell Avenue, Hamden, New Haven County, Connecticut,
United States, 06511

#		Dimensions	sqft	Counted as living area
17	Wet Bar	33'10" x 20'5"	536 sq. ft	Yes
18	Storage	9'8" x 28'2"	272 sq. ft	No
19	Bath	6'1" x 8'4"	51 sq. ft	Yes
20	Bath	8'7" x 5'2"	45 sq. ft	Yes

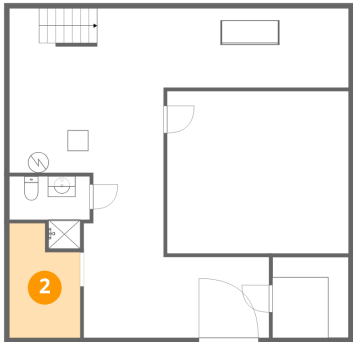
1 Floor 1 - Room



Dimensions: 7'4" x 7'10"
Area: 58 sq. ft
Counted as living area: No

Heated: Yes
Finished: No
Enclosed: Yes
Contiguous: Yes
Permitted: Yes
Wet space: No
Addition: No
Conversion: No

2 Floor 1 - Storage



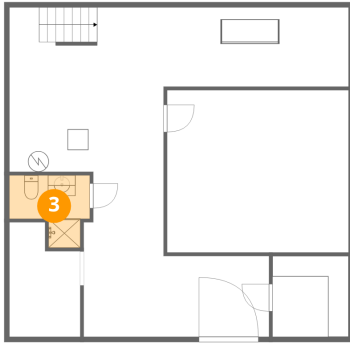
Dimensions: 6'10" x 11'1"
Area: 66 sq. ft
Counted as living area: No

Heated: No
Finished: No
Enclosed: No
Contiguous: Yes
Permitted: Yes
Wet space: No
Addition: No
Conversion: No

Home data report

819 Dixwell Avenue, Hamden, New Haven County, Connecticut,
United States, 06511

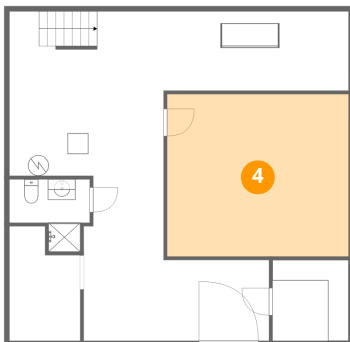
3 Floor 1 - Bath



Dimensions: 7'9" x 7'0"
Area: 41 sq. ft
Counted as living area: No

Heated: Yes
Finished: No
Enclosed: Yes
Contiguous: Yes
Permitted: Yes
Wet space: Yes
Addition: No
Conversion: No

4 Floor 1 - Storage



Dimensions: 17'7" x 15'8"
Area: 276 sq. ft
Counted as living area: No

Heated: No
Finished: No
Enclosed: No
Contiguous: Yes
Permitted: Yes
Wet space: No
Addition: No
Conversion: No

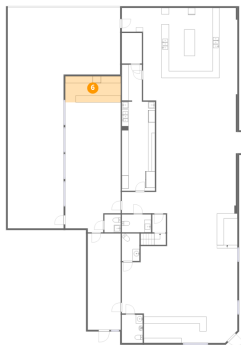
5 Floor 1 - Basement



Dimensions: 32'9" x 31'10"
Area: 573 sq. ft
Counted as living area: No

Heated: Yes
Finished: No
Enclosed: Yes
Contiguous: Yes
Permitted: Yes
Wet space: No
Addition: No
Conversion: No

6 Floor 2 - Bar



Dimensions: 16'3" x 7'7"
Area: 124 sq. ft
Counted as living area: Yes

Heated: Yes
Finished: Yes
Enclosed: Yes
Contiguous: Yes
Permitted: Yes
Wet space: No
Addition: No
Conversion: No

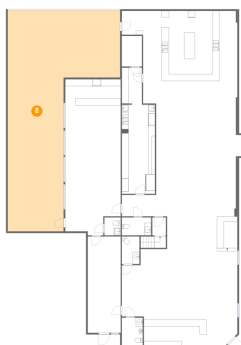
7 Floor 2 - Hall



Dimensions: 4'0" x 5'3"
Area: 21 sq. ft
Counted as living area: No

Heated: Yes
Finished: No
Enclosed: Yes
Contiguous: Yes
Permitted: Yes
Wet space: No
Addition: No
Conversion: No

8 Floor 2 - Patio



Dimensions: 32'11" x 64'7"
Area: 1383 sq. ft
Counted as living area: No

Heated: No
Finished: No
Enclosed: No
Contiguous: Yes
Permitted: Yes
Wet space: No
Addition: No
Conversion: No

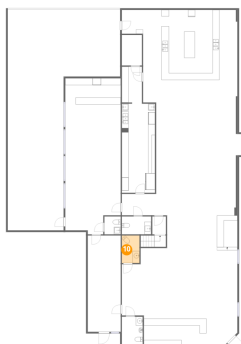
9 Floor 2 - Room



Dimensions: 5'10" x 8'11"
Area: 53 sq. ft
Counted as living area: Yes

Heated: Yes
Finished: Yes
Enclosed: Yes
Contiguous: Yes
Permitted: Yes
Wet space: No
Addition: No
Conversion: No

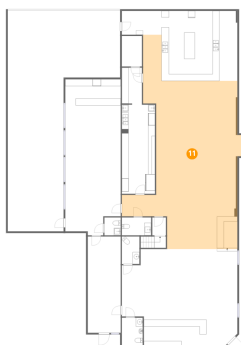
10 Floor 2 - Bath



Dimensions: 5'2" x 8'1"
Area: 42 sq. ft
Counted as living area: Yes

Heated: Yes
Finished: Yes
Enclosed: Yes
Contiguous: Yes
Permitted: Yes
Wet space: Yes
Addition: No
Conversion: No

11 Floor 2 - Serving Area



Dimensions: 33'4" x 53'1"
Area: 1308 sq. ft
Counted as living area: Yes

Heated: Yes
Finished: Yes
Enclosed: Yes
Contiguous: Yes
Permitted: Yes
Wet space: No
Addition: No
Conversion: No

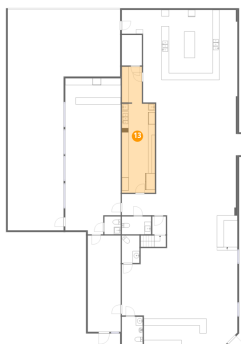
12 Floor 2 - Bath



Dimensions: 4'9" x 5'3"
Area: 25 sq. ft
Counted as living area: Yes

Heated: Yes
Finished: Yes
Enclosed: Yes
Contiguous: Yes
Permitted: Yes
Wet space: Yes
Addition: No
Conversion: No

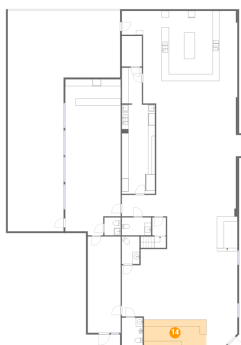
13 Floor 2 - Room



Dimensions: 9'9" x 36'11"
Area: 316 sq. ft
Counted as living area: Yes

Heated: Yes
Finished: Yes
Enclosed: Yes
Contiguous: Yes
Permitted: Yes
Wet space: No
Addition: No
Conversion: No

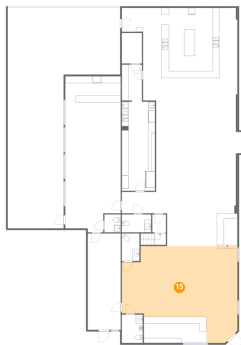
14 Floor 2 - Bar



Dimensions: 18'4" x 7'8"
Area: 141 sq. ft
Counted as living area: Yes

Heated: Yes
Finished: Yes
Enclosed: Yes
Contiguous: Yes
Permitted: Yes
Wet space: No
Addition: No
Conversion: No

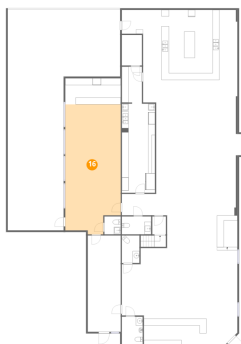
15 Floor 2 - Billiard Room



Dimensions: 33'10" x 28'4"
Area: 730 sq. ft
Counted as living area: Yes

Heated: Yes
Finished: Yes
Enclosed: Yes
Contiguous: Yes
Permitted: Yes
Wet space: No
Addition: No
Conversion: No

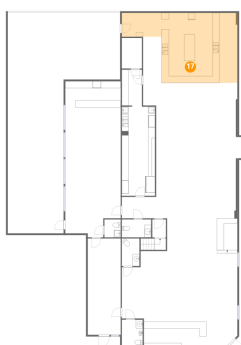
16 Floor 2 - Sitting Room



Dimensions: 16'3" x 38'0"
Area: 581 sq. ft
Counted as living area: Yes

Heated: Yes
Finished: Yes
Enclosed: Yes
Contiguous: Yes
Permitted: Yes
Wet space: No
Addition: No
Conversion: No

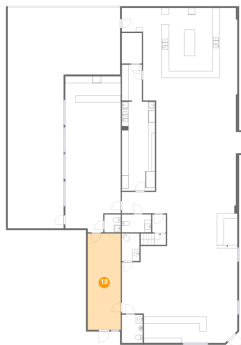
17 Floor 2 - Wet Bar



Dimensions: 33'10" x 20'5"
Area: 536 sq. ft
Counted as living area: Yes

Heated: Yes
Finished: Yes
Enclosed: Yes
Contiguous: Yes
Permitted: Yes
Wet space: No
Addition: No
Conversion: No

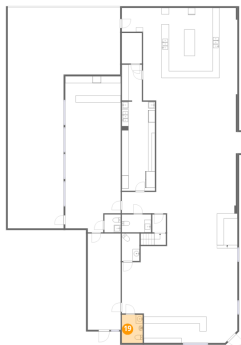
18 Floor 2 - Storage



Dimensions: 9'8" x 28'2"
Area: 272 sq. ft
Counted as living area: No

Heated: No
Finished: No
Enclosed: No
Contiguous: Yes
Permitted: Yes
Wet space: No
Addition: No
Conversion: No

19 Floor 2 - Bath



Dimensions: 6'1" x 8'4"
Area: 51 sq. ft
Counted as living area: Yes

Heated: Yes
Finished: Yes
Enclosed: Yes
Contiguous: Yes
Permitted: Yes
Wet space: Yes
Addition: No
Conversion: No

20 Floor 2 - Bath



Dimensions: 8'7" x 5'2"
Area: 45 sq. ft
Counted as living area: Yes

Heated: Yes
Finished: Yes
Enclosed: Yes
Contiguous: Yes
Permitted: Yes
Wet space: Yes
Addition: No
Conversion: No