



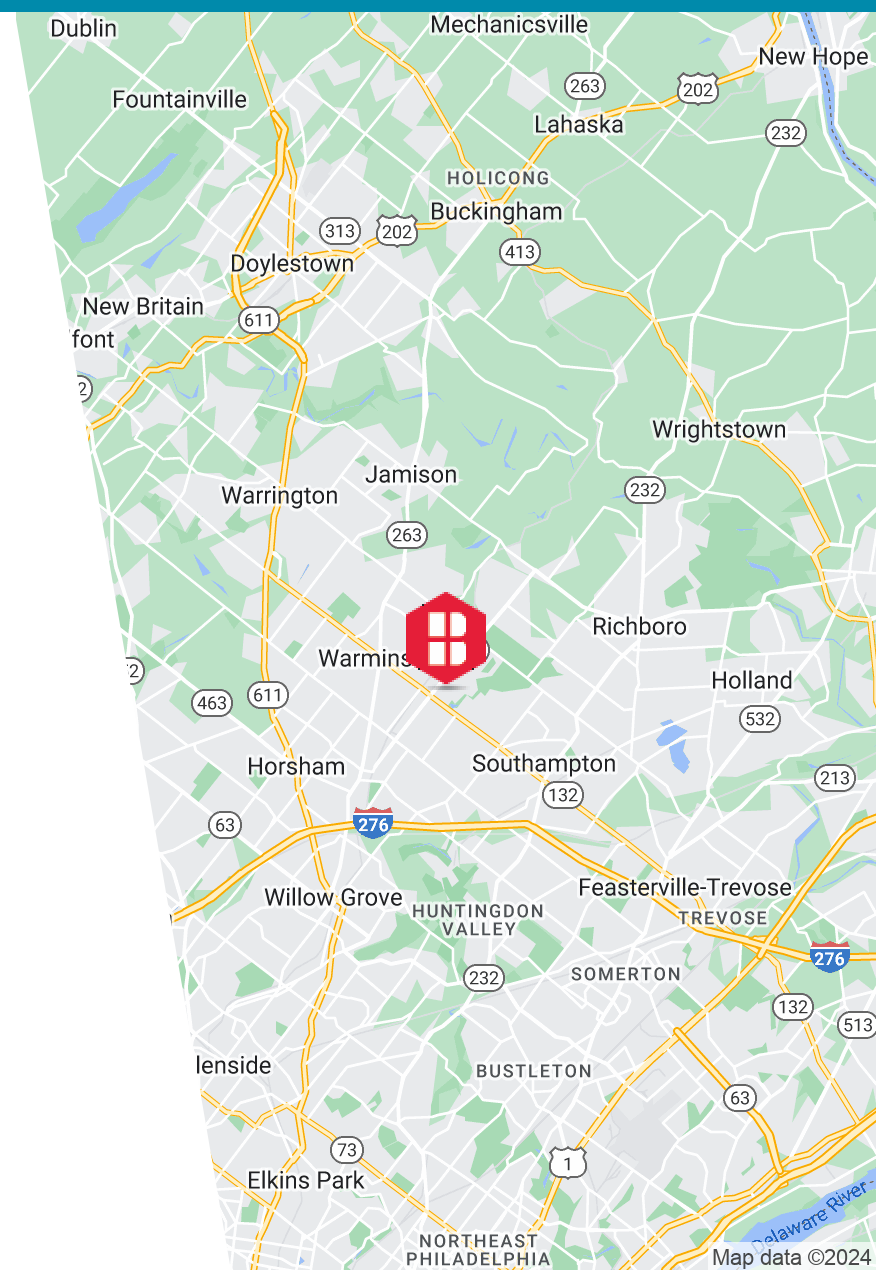
165 VETERANS WAY
WARMINSTER, PA

AVAILABLE FOR LEASE
INDUSTRIAL PROPERTY

7,700-15,000 SF

PROPERTY HIGHLIGHTS

- Up to 15,463 SF Available
- 22'-24' Clear Ceiling
- Three (3) Loading Docks
- Natural Gas
- Central Heating and Air Conditioning
- Secure Storage
- Private Restrooms
- Kitchen
- Fully Sprinklered
- Ample Parking
- 3-Phase Heavy Power
- Zoned I-Industrial (Warminster Township)
- Built in 2005
- This building is situated in Warminster Business Center East on Veterans Way, a part of the Franklin Corporate Center in Warminster. This site provides convenient access to RT 611, which leads to the entry of I-276, which serves as a major artery in southeastern Pennsylvania



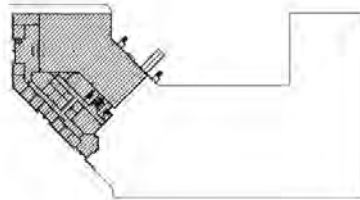
ADDITIONAL PHOTOS



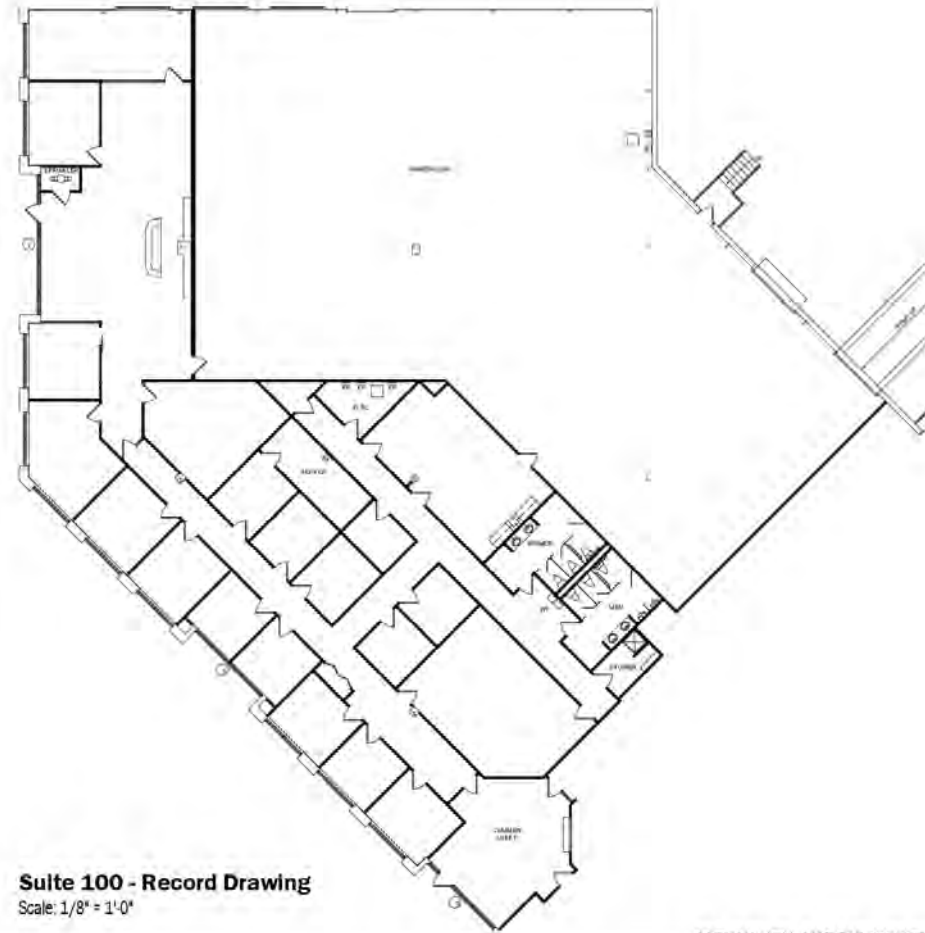
FLOOR PLANS

AJAX BBC, LLC.

165 Veterans Way, Warminster PA, 18974
05/31/24



Key Plan
NTS



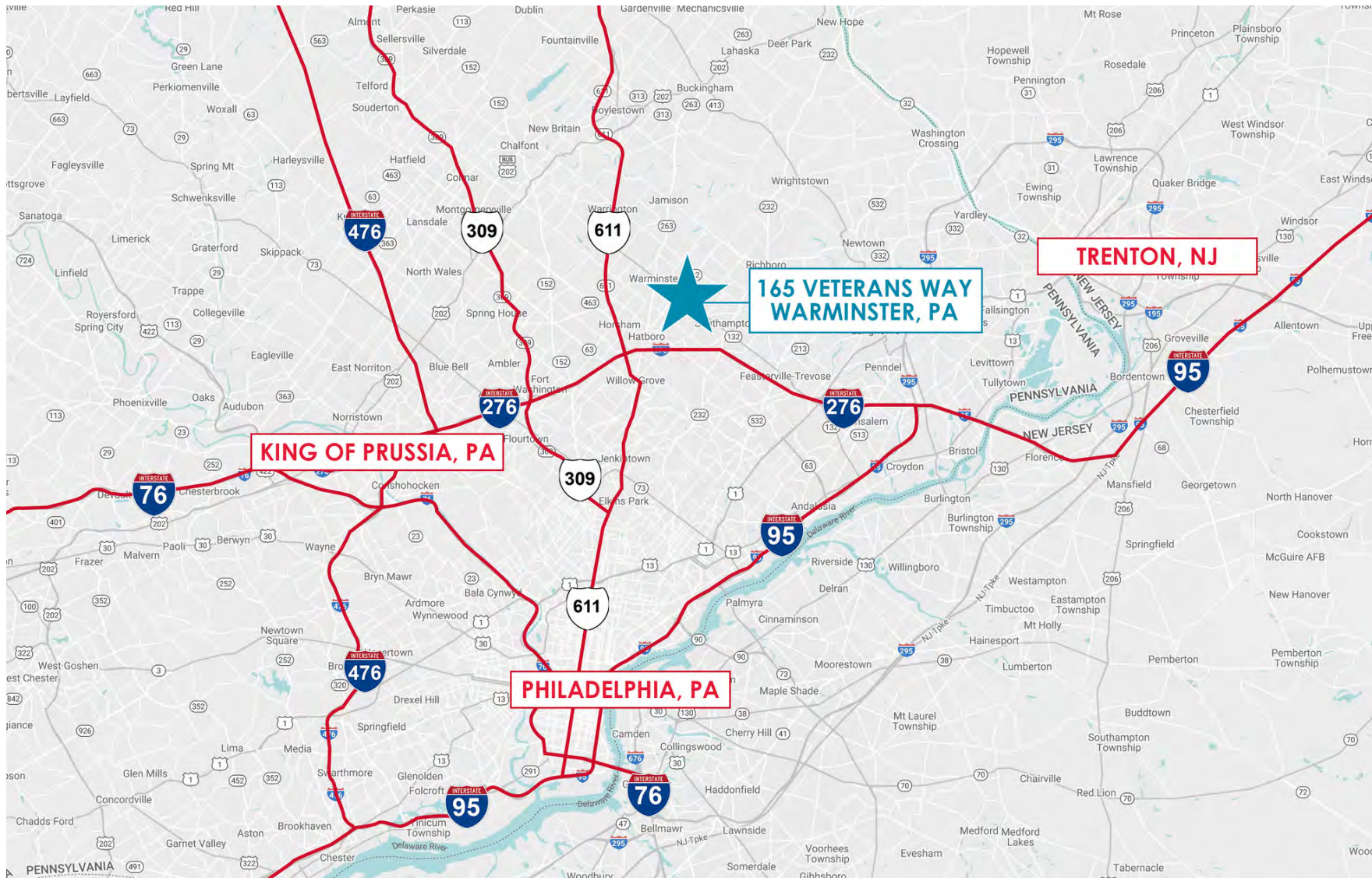
Suite 100 - Record Drawing
Scale: 1/8" = 1'-0"

PRELIMINARY - NOT FOR CONSTRUCTION

RD1 Suite 100
/01 24.0001241.000/ GLR

NELSON
NELSONworldwide.com

AREA MAP



CONTACT



Timothy Pennington
Partner & Senior Vice President
215.448.6266
tpennington@binswanger.com



Matt Corrigan
Senior Vice President
215.448.6018
mcorrigan@binswanger.com



Three Logan Square
1717 Arch Street, Suite 5100
Philadelphia, PA 19103
Phone: 215.448.6000
binswanger.com

The information contained herein is from sources deemed reliable, but no warranty or representation is made as to the accuracy thereof and no liability may be imposed.