

on Albright College Campus
180,000 sf Warehouse & Office
1801 N. 12th Street, Reading PA

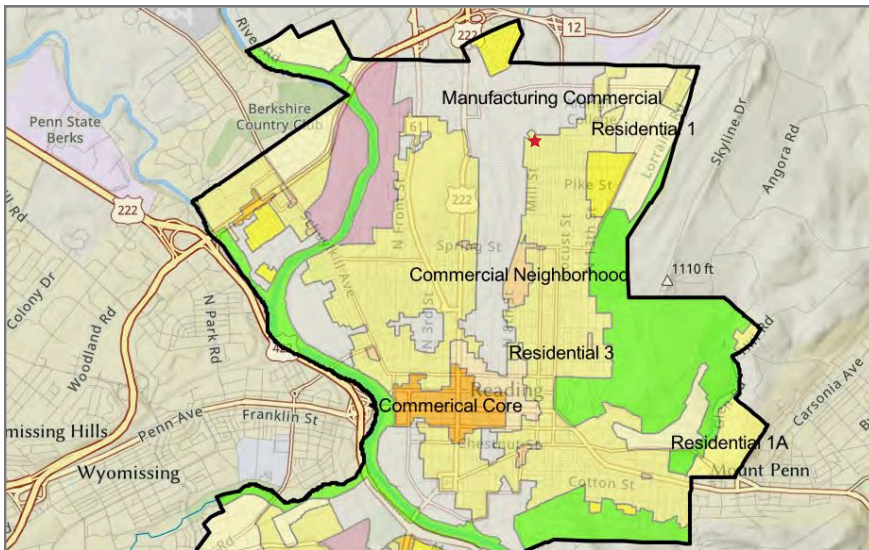
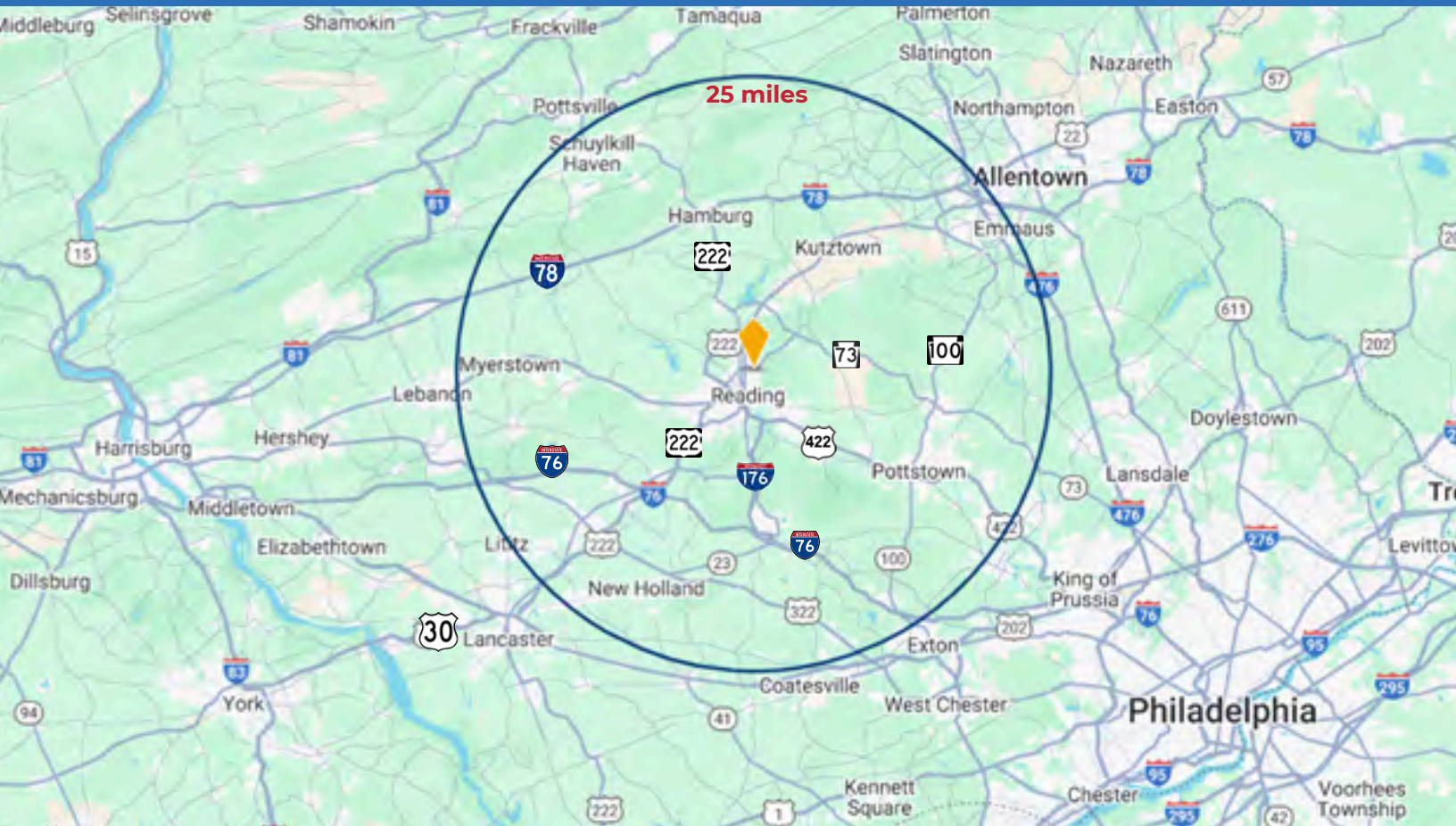


For Lease

Camp Building



Zoning



Zoning:

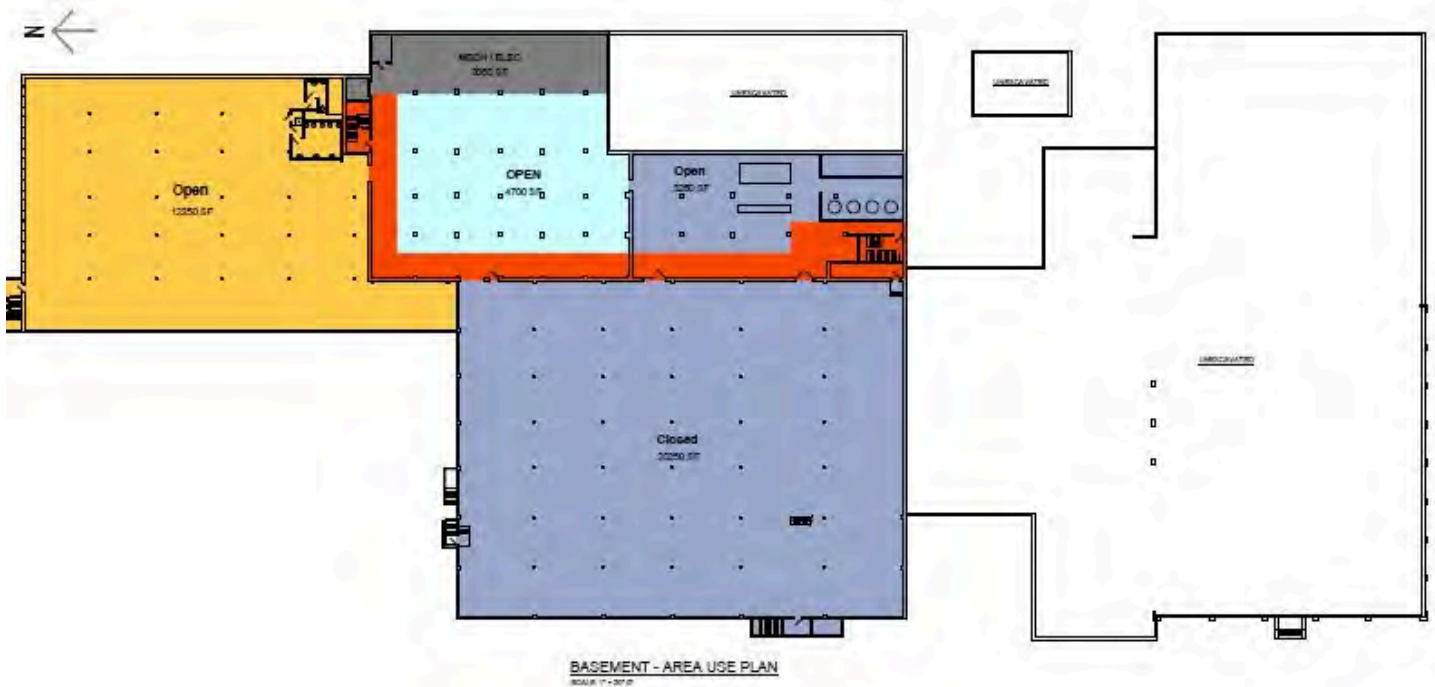
- M-C Manufacturing Commercial District
 - Assembly and packaging
 - Research and development facilities
 - Wood products and furniture
 - Offices and medical laboratories
 - Retail and wholesale sales and services
 - Self-storage facilities
- INS Institutional Overlay Zone

For Lease

Camp Building



Basement & First Floor Plans

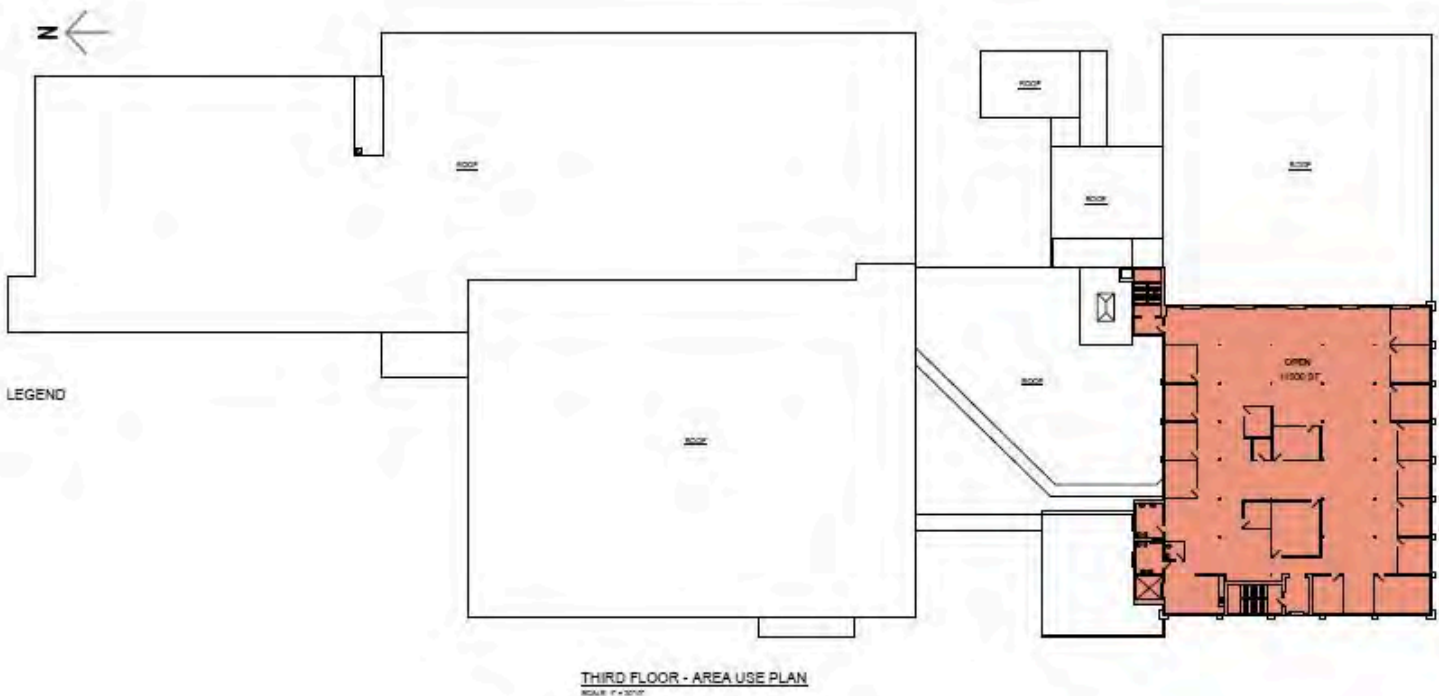
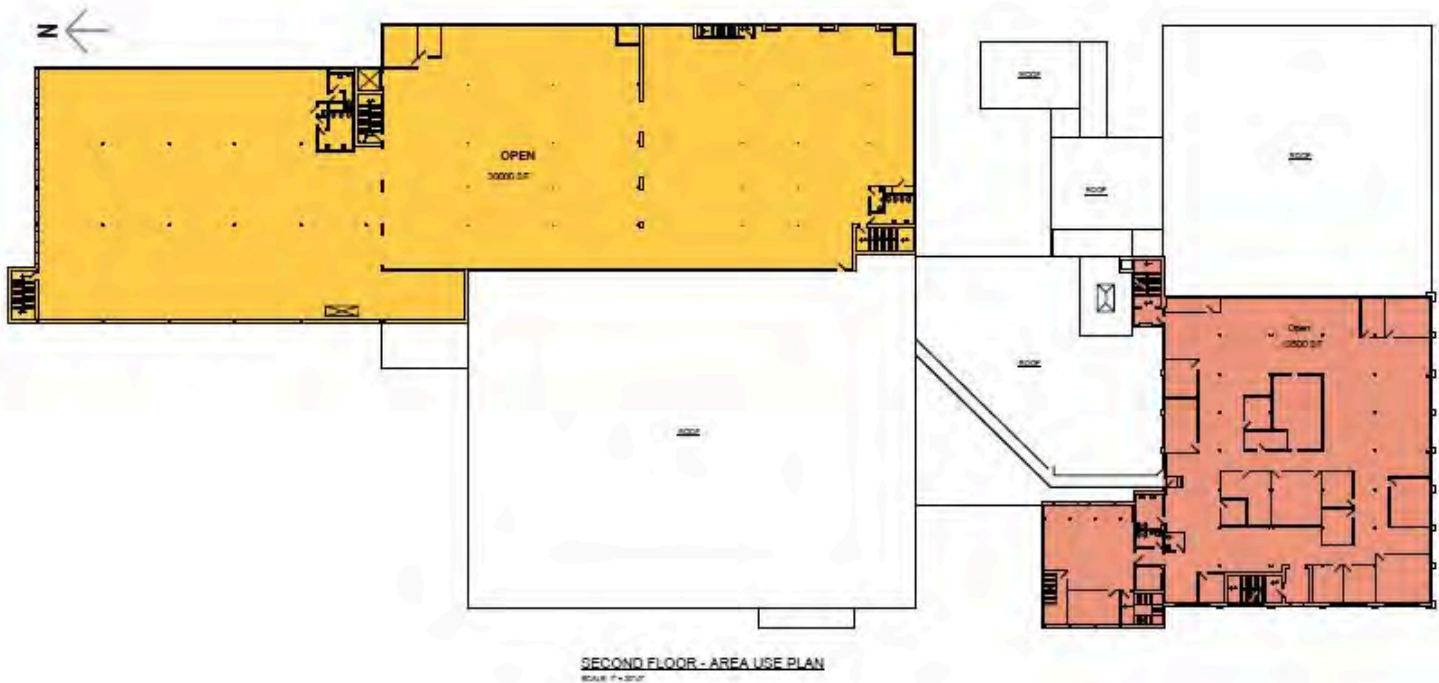


For Lease

Camp Building



Second & Third Floor Plans

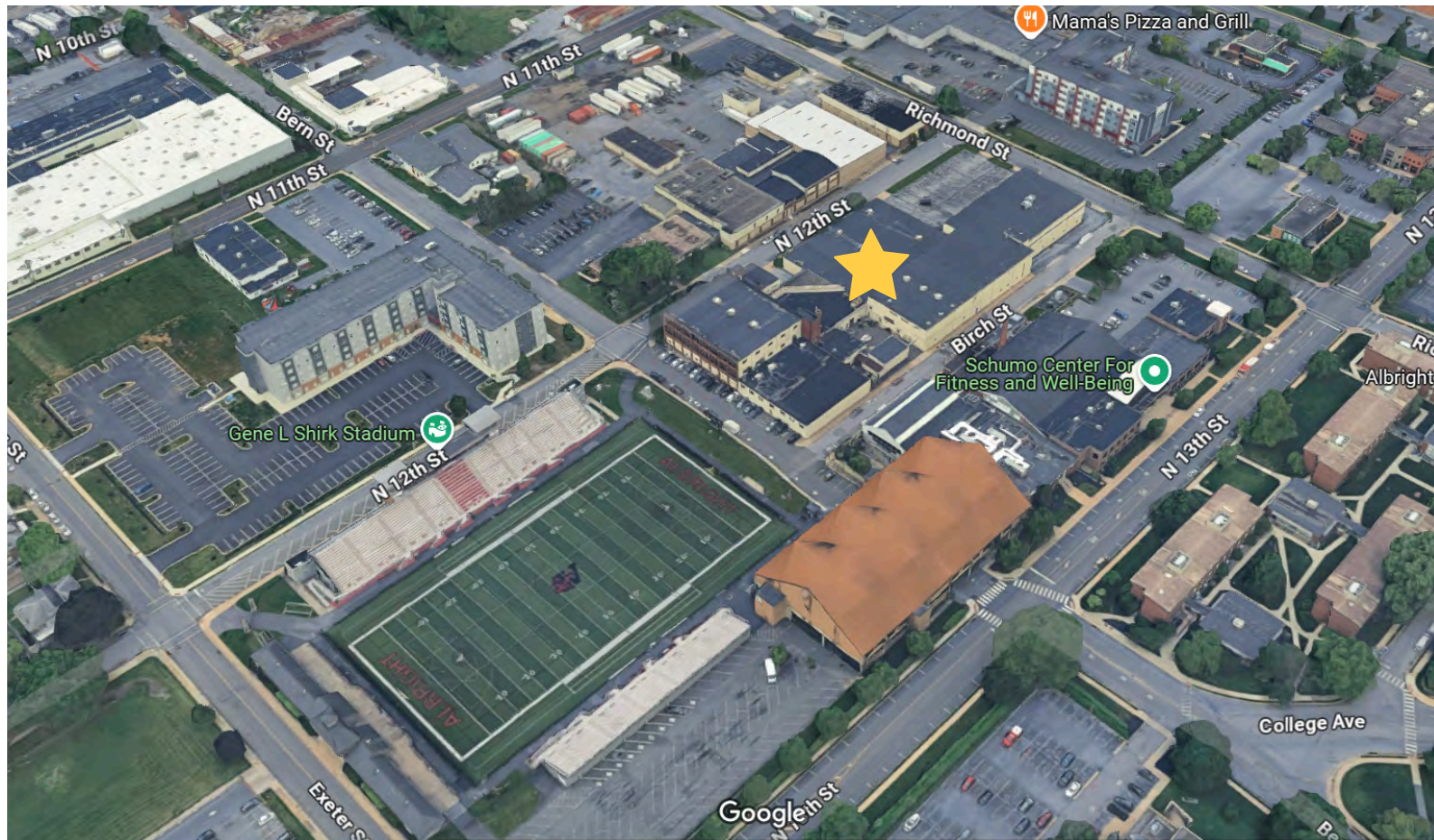


For Lease

Camp Building



Camp Building



For Lease

Camp Building



Camp Building

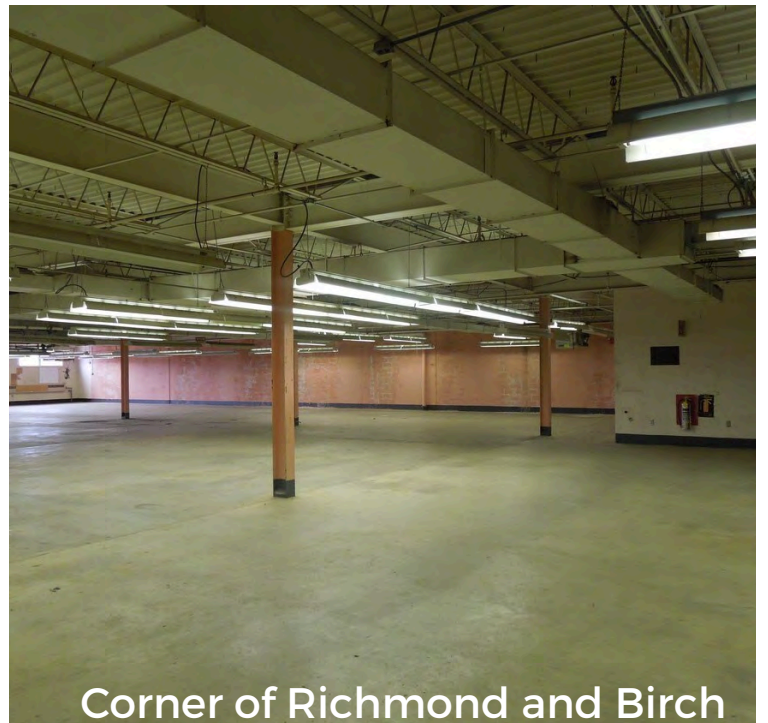


For Lease

Camp Building



Camp Building



Corner of Richmond and Birch

For Lease Camp Building



Zoning M-C & INS Overlay

[Link to code library for further information](#)

- (l) Permitted-by-right uses. [Amended 2-14-2011 by Ord. No. 8-2011; 4-24-2023 by Ord. No. 41-2023]
- (a) Manufacture or industrial processing within an enclosed building involving the following:
 - (b) Assembly and packaging
 - (c) Electronic and electrical equipment
 - (d) Fabricated metals products
 - (e) Food and beverage products
 - (f) Leather and leather products (not including curing, tanning and finishing of hides)
 - (g) Machinery
 - (h) Medical and scientific equipment and related products
 - (i) Motor freight transportation and warehousing
 - (j) Non-PUC telecommunications facilities
 - (k) Paper and allied products (other than raw paper pulp)
 - (l) Petroleum and coal products, other than asphalt manufacture or petroleum refining
 - (m) Pottery and ceramics
 - (n) Primary metals industries
 - (o) Railroad transportation
 - (p) Research and development facilities
 - (q) Rubber, synthetic rubber, resins and miscellaneous products
 - (r) Sporting goods, toys, jewelry
 - (s) Stone, clay and glass products
 - (t) Textiles and apparel
 - (u) Tobacco products
 - (v) Transportation equipment
 - (w) Transportation and public utilities
 - (x) Wood products and furniture
 - (y) Banks and financial institutions
 - (z) Auto repair and car washes, in compliance with § 600-1105
 - (aa) College or university, not including residential uses
 - (bb) Convenience stores with fuel sales
 - (cc) Employee agencies and services
 - (dd) Exercise club
 - (ee) Fire and ambulance stations
 - (ff) Flex space buildings that include one or more permitted-by-right business uses
 - (gg) Gardens, crop farming and forestry
 - (hh) Lumber and building material supply center, retail or wholesale
 - (ii) Municipal uses
 - (jj) Offices and medical laboratories
 - (kk) Radio and television stations
 - (ll) Recreation facilities, public parks and nonmotorized recreation trails
 - (mm) Restaurants, which may not include drive-through service.
 - (nn) Retail and wholesale sales and services
 - (oo) Self-storage facilities
 - (pp) Swimming pool as principal use
 - (qq) Taxi headquarters
 - (rr) Non-tower based WCF if co-located on a municipal facility or a tower-based WCF that existed prior to the approval of this part and pursuant to Part 21 of this chapter . . .
 - (ss) Facilities may be placed on a leased area.
 - (tt) Small Wireless Communications Facilities, pursuant to Part 21 of this Chapter.
 - (uu) Trade, vocational and hobby schools, not including residential uses
 - (vv) Vehicle sales or rental
 - (ww) Warehouse, distribution and storage facilities



Commercial Real Estate done smarter

Mike Barnes

484-370-2639 Direct

barnes@jacksoncross.com

Bob Cook

484-370-2655 Direct

bcook@jacksoncross.com

Jackson Cross Partners

610 Freendeom Business Center
Suite 310

King of Prussia, PA 19406

www.jacksoncross.com

610-265-7700

Information concerning this offer is from sources deemed reliable, but no warranty is made as to the accuracy thereof and it is submitted subject to errors, change of price or other conditions, prior sale or lease withdraw without notice. Jackson Cross Partners, any cooperating broker, and any salesperson working with either, are representing the owner's interest and fiduciary responsibilities to the owner, but are obligated to treat all parties fairly.