

Professional Office Space for Lease – Prime Sandy Location

9853 S 700 E Sandy UT 84070

\$9.00 per SF



Now available!

A versatile basement office suite located in an established dental office building at the high-visibility corner of 700 E and 9800 S—one of Sandy's most desirable and well-trafficked locations.



This professionally finished lower-level space offers a clean, quiet, and flexible layout ideal for medical, wellness, or professional services. Whether you're a therapist, consultant, or wellness provider, this space provides the perfect blend of accessibility and professionalism. With easy access to I-15, nearby retail centers, and residential communities, this location offers unparalleled convenience for both clients and professionals.

KW UTAH REALTORS
KELLERWILLIAMS.

KW COMMERCIALSM

Brooke Moore

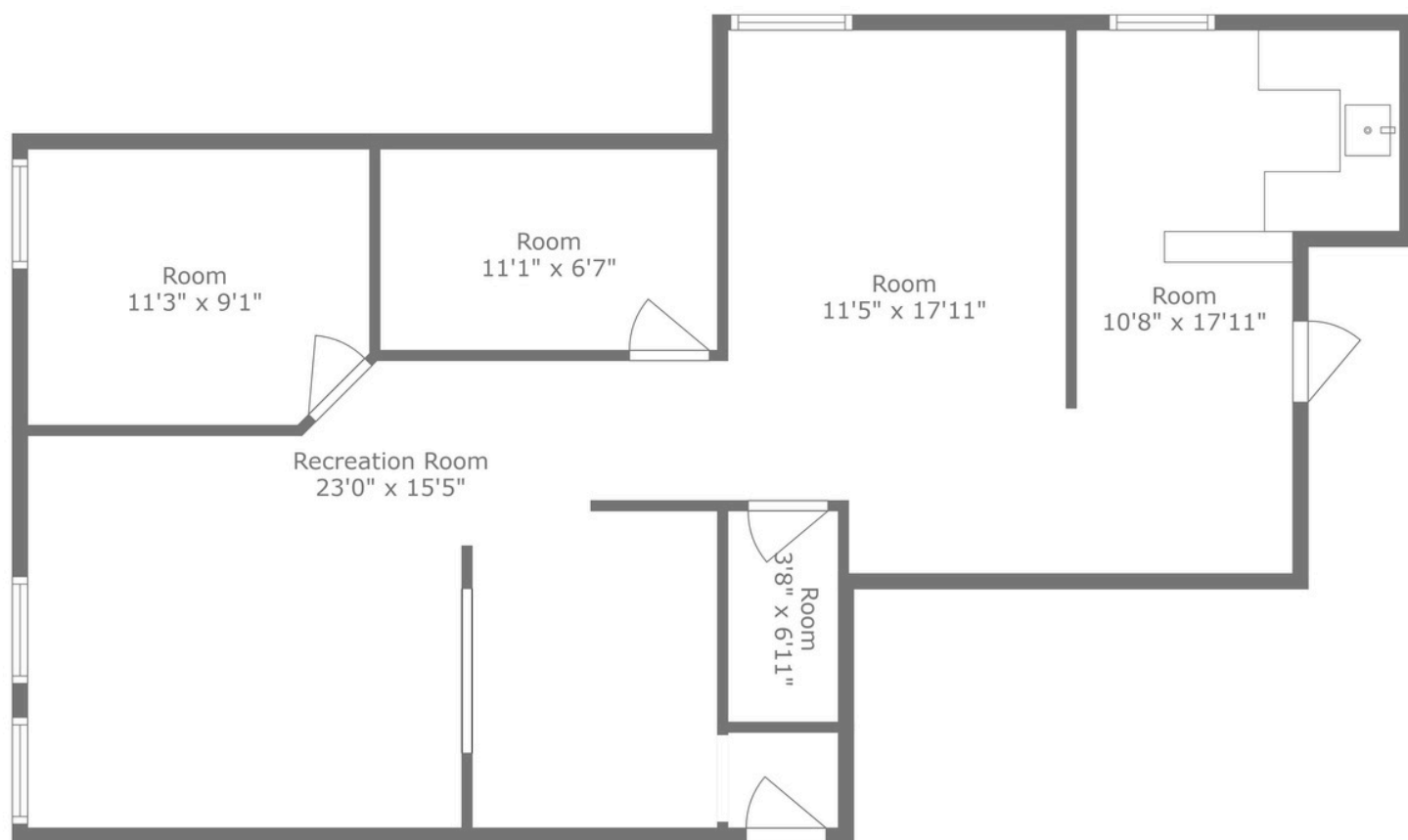
808.292.4634

brookemoore@kw.com

Professional Office Space for Lease – Prime Sandy Location

9853 S 700 E Sandy UT 84070

\$9.00 per SF



Key Features:

- Approx. 839 SF (an addition 73 sqft space available upon request)
- Prime location at 700 E & 9800 S with excellent exposure
- Private entrance for clients and employees
- Ample on-site parking
- Natural light via daylight basement windows
- Utilities included or negotiable
- Opportunity for cross-referrals from dental office above