

1137

SMITH LANE
ROSEVILLE, CA 95661

FOR SALE
\$249,000



Property Highlights:

- Rare, small Office Condominium for sale
- Well priced, move-in ready
- 900 sf freestanding building within a business park
- Five offices, break room, Rectpion area and restroom\
- Former medical office
- Business Professional Zoning
- Abundant Parking
- Immediate freeway access

Ranga Pathak
RE/MAX Gold
CA DRE 01364897
916-201-9247
ranga.pathak@norcalgold.com

The information contained herein including square footage has been obtained from sources deemed to be reliable. RE/MAX Gold has not verified and makes no guarantees, warranties or representations regarding the accuracy of the information. You need to conduct a careful, independent evaluation of the property to establish its suitability for your purposes.



1137

SMITH LANE
ROSEVILLE, CA 95661

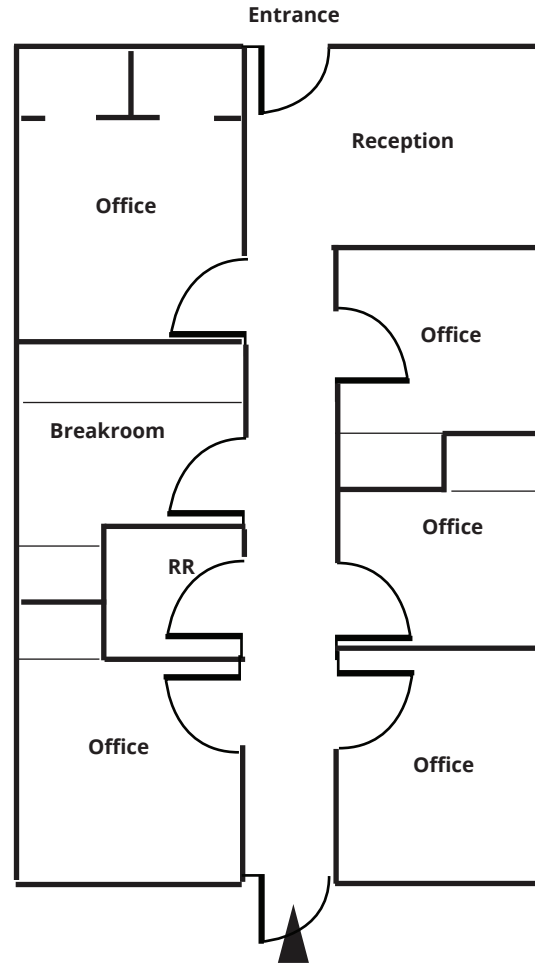
PROPERTY PHOTOS



1137

SMITH LANE
ROSEVILLE, CA 95661

FLOOR PLAN

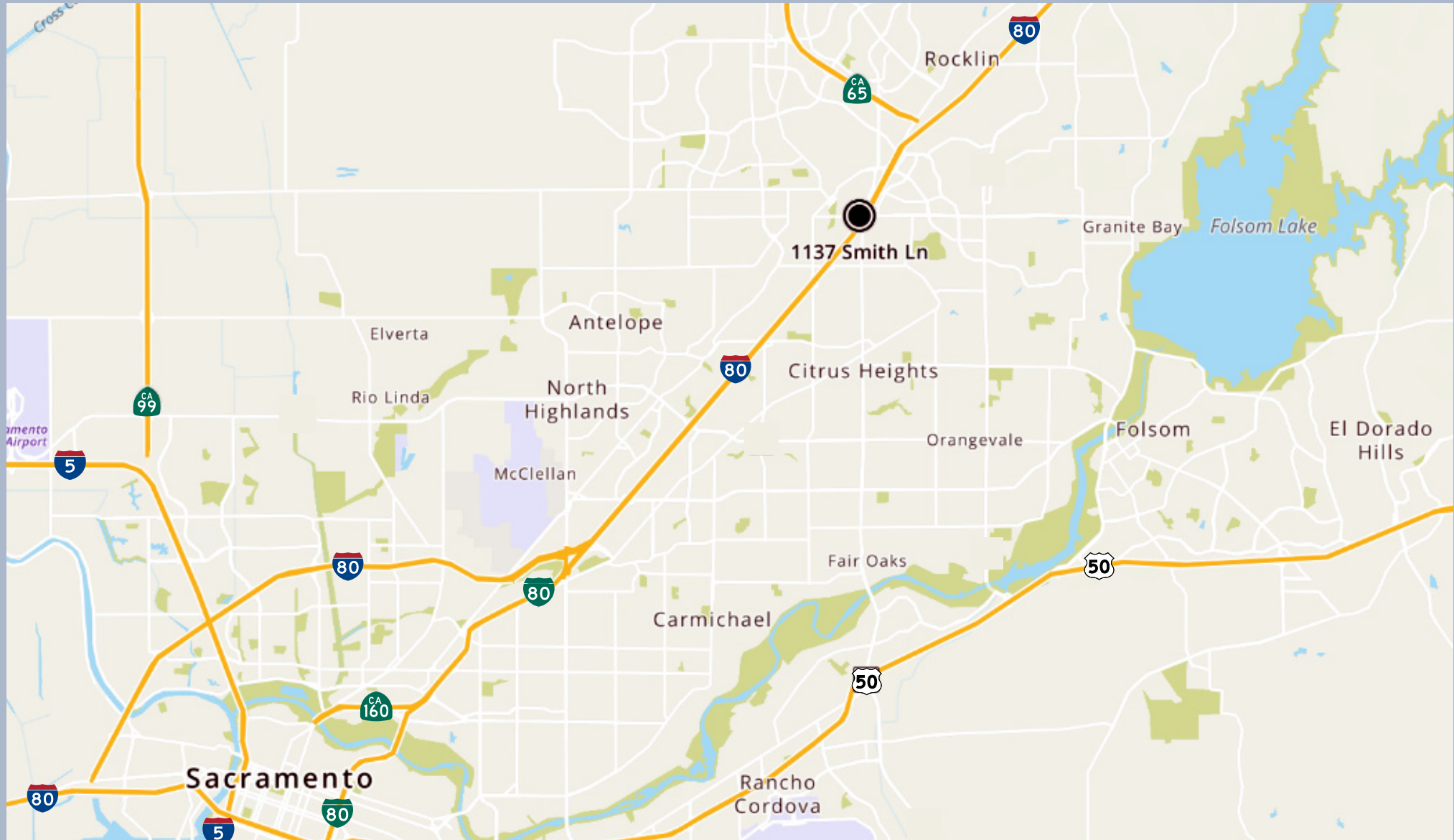


Schematic not drawn to scale

1137

SMITH LANE
ROSEVILLE, CA 95661

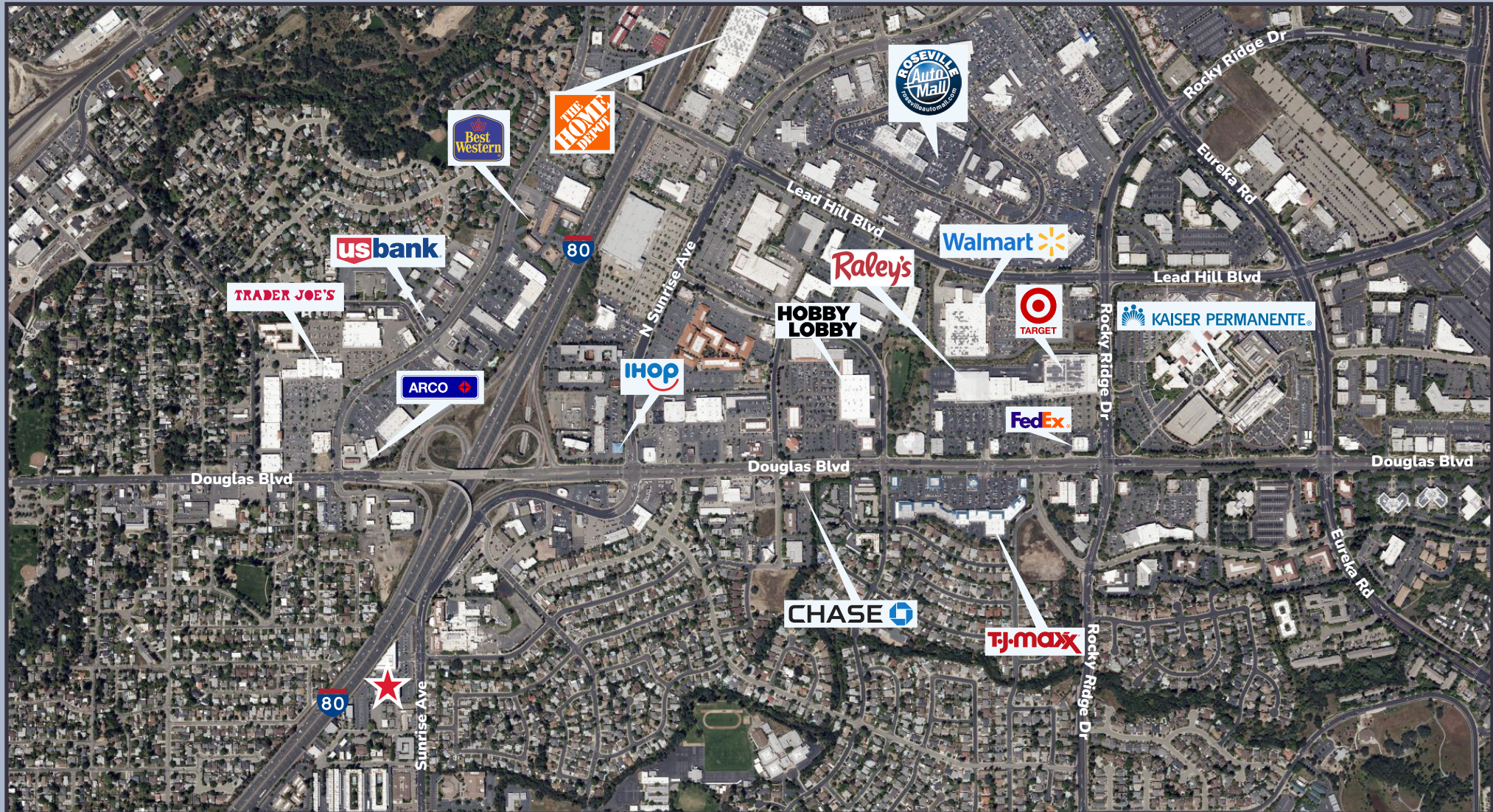
LOCATION MAP



1137

SMITH LANE
ROSEVILLE, CA 95661

VICINITY MAP



1137

SMITH LN, SUITE 8
ROSEVILLE, CA 95661

DEMOGRAPHICS

Key Facts: 5 Mile Radius



305,107
Total Population (2024)



\$117,835
Average Household Income



16,237
Businesses



120,090
Daytime Employees



77,145
Owner Occupied Households



\$525,341
Median Home value