

The image shows the exterior of the Park North Center, a modern commercial building with a facade of brown panels and large glass windows. The building is partially obscured by several large, leafy green trees. In the foreground, there is a paved parking lot with some shadows cast by the trees. A semi-transparent blue banner is overlaid across the middle of the image, containing the text 'PARK NORTH CENTER' in white, bold, uppercase letters.

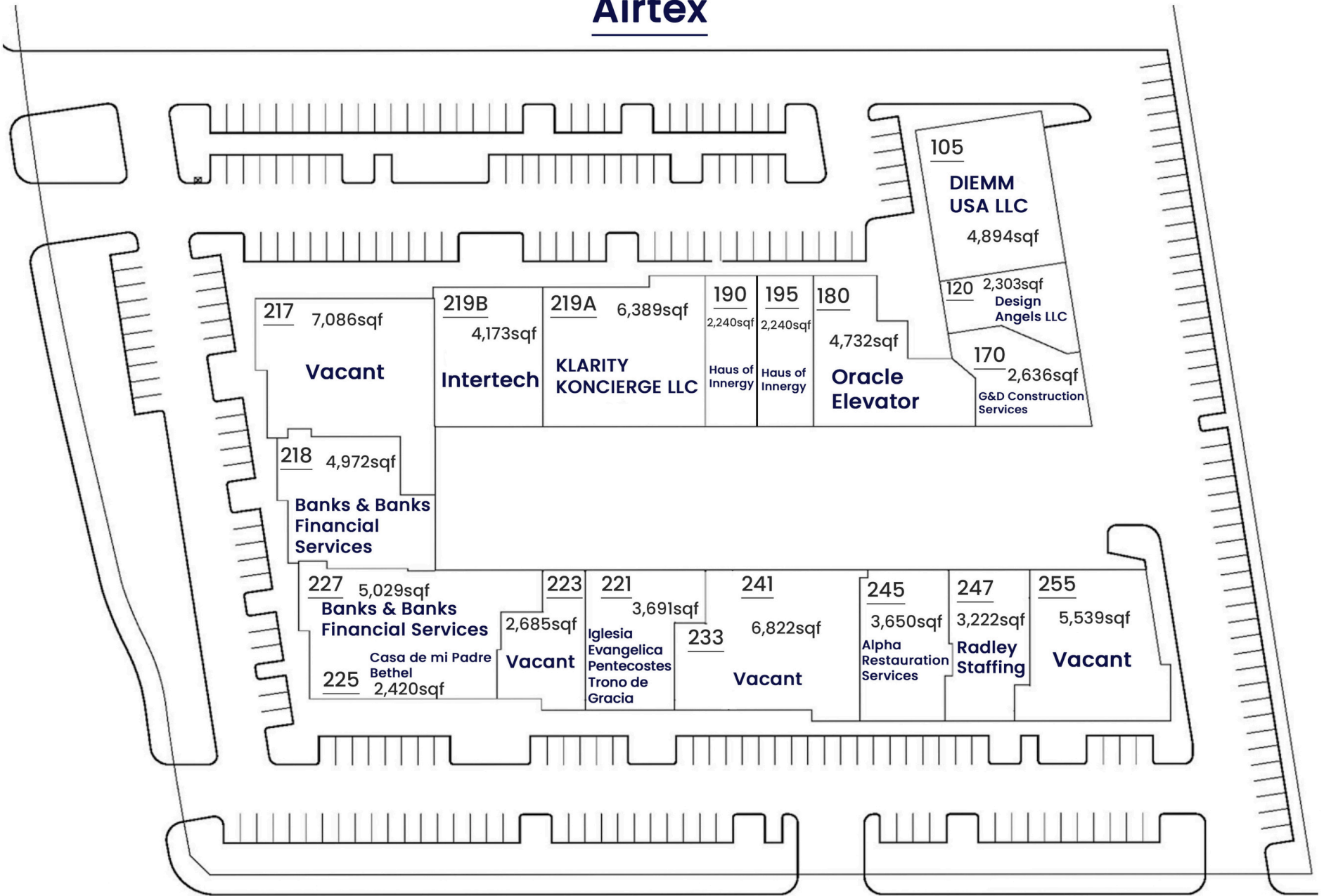
# PARK NORTH CENTER

221 W. AIRTEX BOULEVARD HOUSTON, TEXAS, 77090

# Available units

## SITE PLAN

Airtex



**Unit 217** 7,086 sq. ft. We are leasing this unit for \$4,251.60, plus \$1,842.36 for CAM (NNN), with a total monthly lease of \$6,093.96

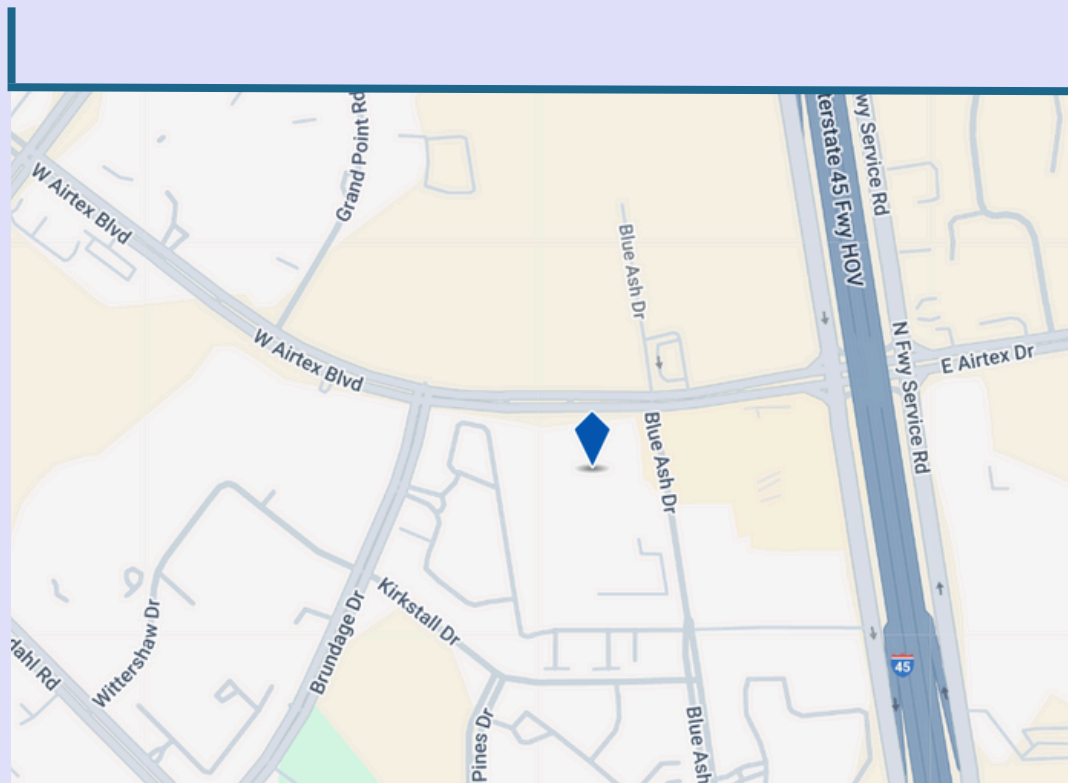
ONLY LEASING FOR CLEARLY COMMERCIAL BUSINESS

**Unit 223** 2,685 sq. ft. We are leasing this unit for \$3,222.00, plus \$698.10 for CAM (NNN), with a total monthly lease of \$3,920.10

**Unit 223-241** 6,822 sq. ft. We are leasing this unit for \$8,186.20, plus \$1,773.72 for CAM (NNN), with a total monthly lease of \$9,959.72

**Unit 255** 5,539 sq. ft. We are leasing this unit for \$6,646.00, plus \$1,440.14 for CAM (NNN), with a total monthly lease of \$8,086.14

# PROPERTY DETAILS



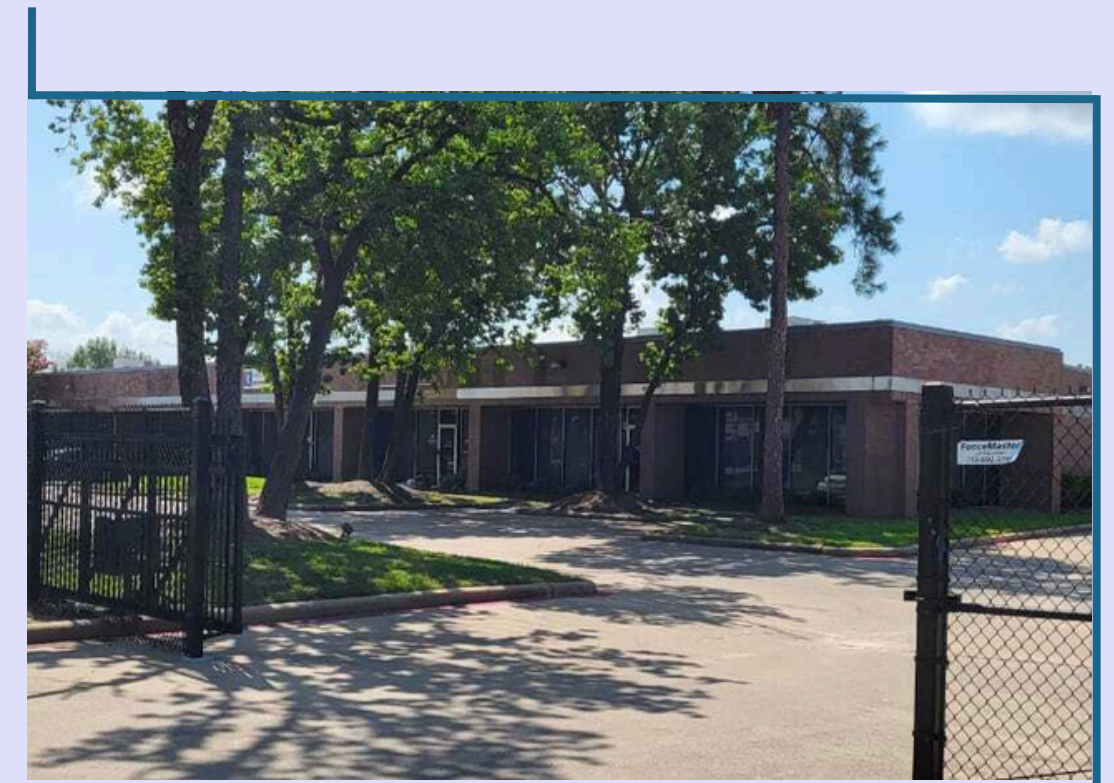
**Total Building Square Feet:**

75,603 Sq Ft



**Total Land Area**

5.3 Acres

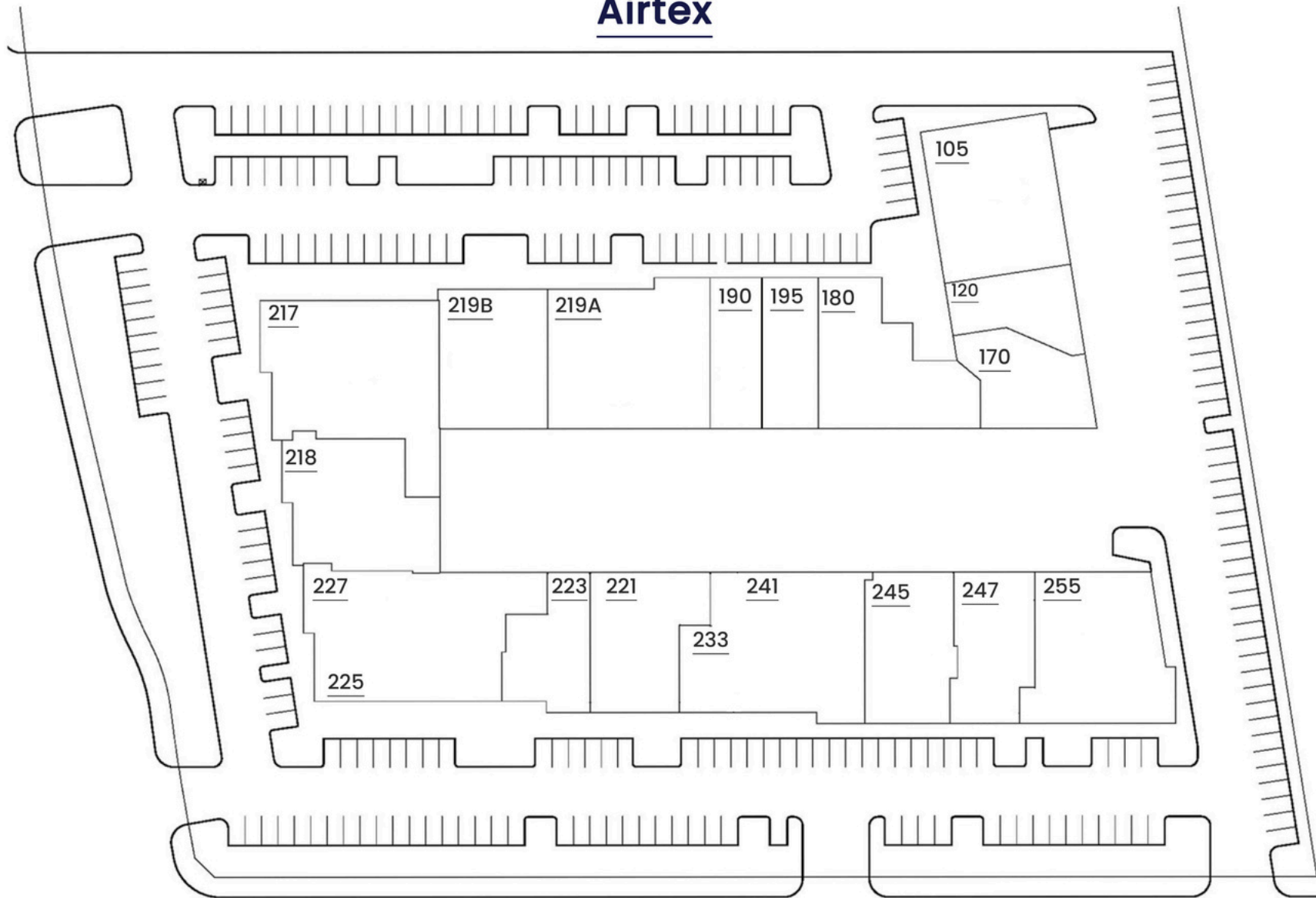


**Year Built**

1985

## SITE PLAN

Airtex



## PROPERTY OVERVIEW

Park North Technology center is located one block from I-45 and I-69 and easily accessible to the Sam Houston Tollway and Hardy Toll Road expressway

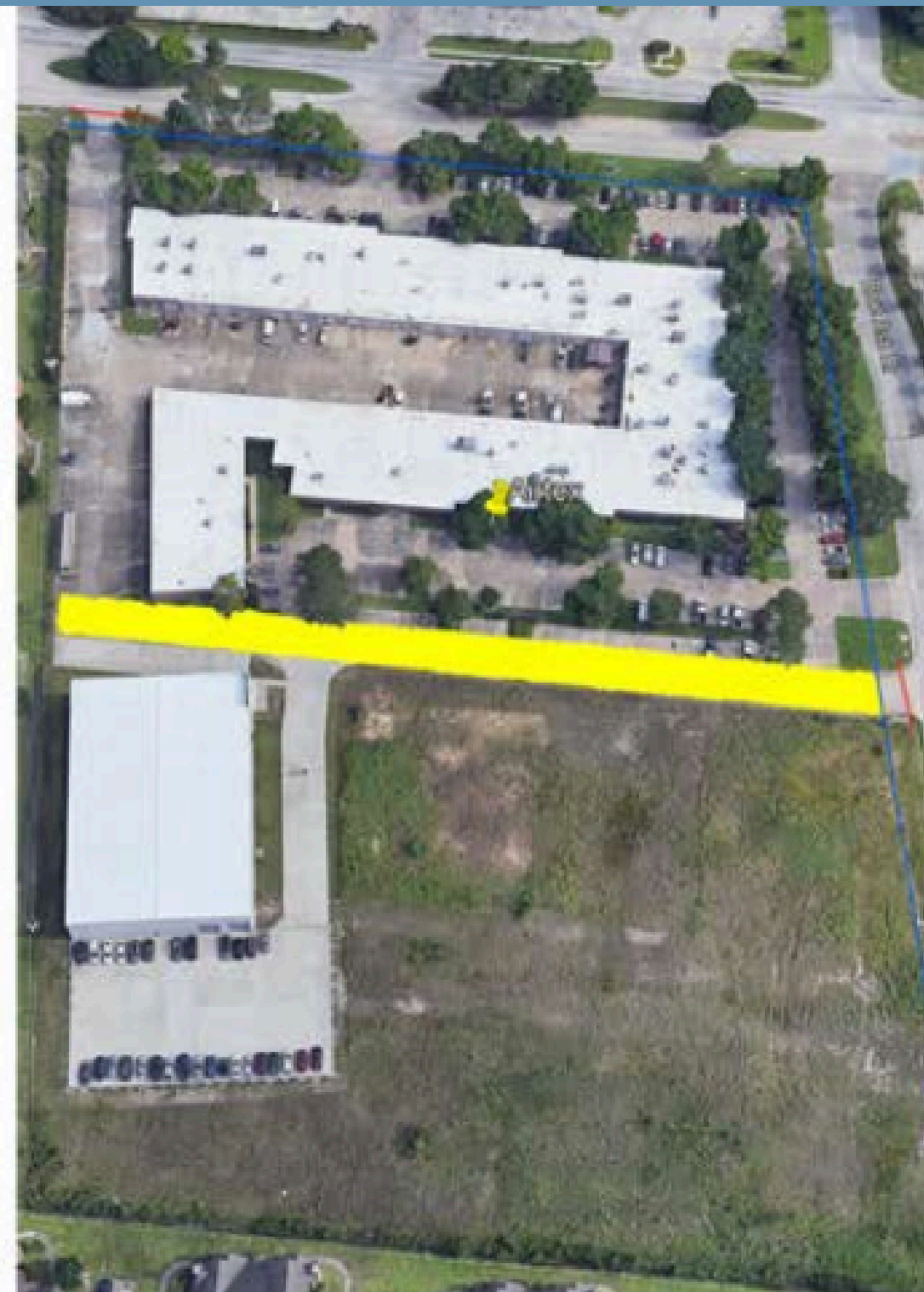
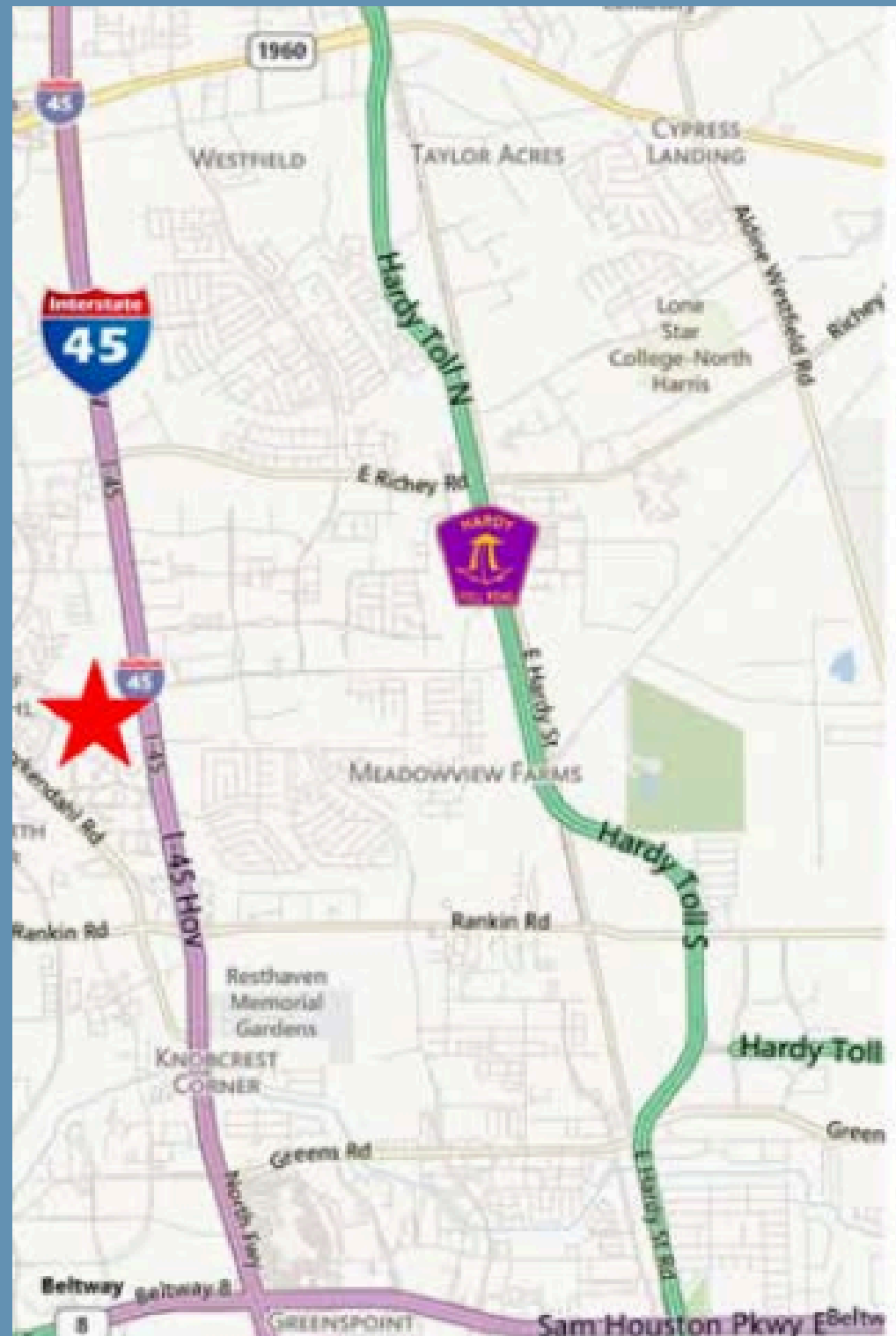
15 minutes from George Bush International Airport

Security fence and every day surveillance by security guards

Most of its tenants have been in the property for a long term

Building has 27 overhead roll-up door

Located in a very attractive Industrial zone where main industries are located



[airtex2021@gmail.com](mailto:airtex2021@gmail.com)

832 679 4520