

15203 S. COMMERCE DRIVE
DEARBORN, MICHIGAN

INDUSTRIAL FOR SALE OR LEASE
53,906 Square Feet Available



**SIGNATURE
ASSOCIATES**
KNOW SIGNATURE | KNOW RESULTS

COMMERCE PARK SOUTH



1250 KV POWER ON SITE | SELLER FINANCING AVAILABLE

PROPERTY FEATURES

- 53,906 square feet available
- 6,300 square feet of office
- 18' clear height
- (1) 10'x12' and (1) 12'x14' grade level doors
- (4) truckwells
- 1250 KV power on site
- Air-conditioned
- Ample parking
- Available immediately
- Easy access to I-94 and M-39 expressways
- Sale Price: \$4,295,000 (\$79.68/sq. ft.)



For more information, please contact:

JOHN BOYD
(248) 948 0102
jboyd@signatureassociates.com

GRANT BRUCE
(248) 948 4188
gbruce@signatureassociates.com

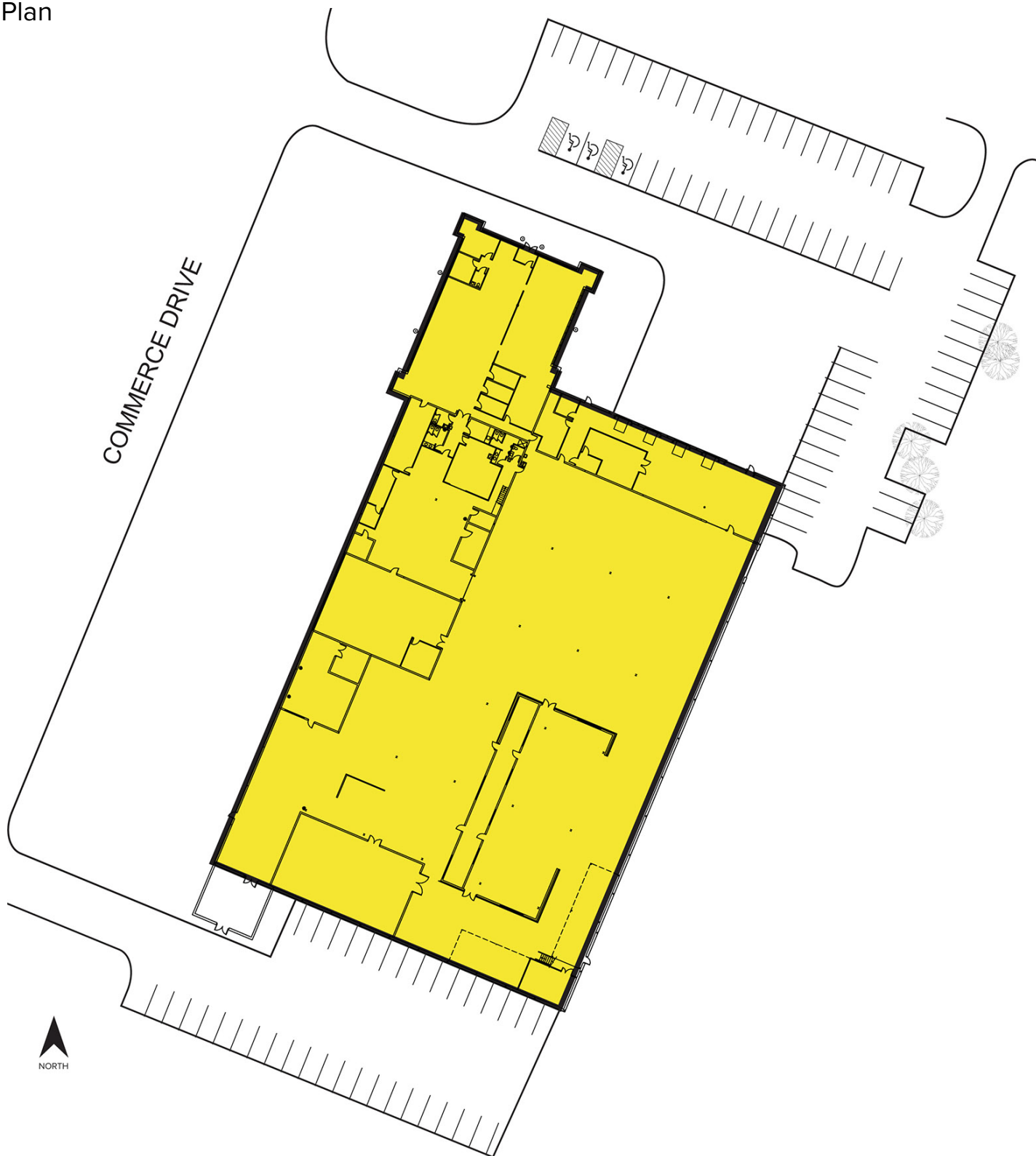
SIGNATURE ASSOCIATES
One Towne Square, Suite 1200
Southfield, MI 48076
www.signatureassociates.com

15203 S. Commerce Drive – Dearborn, Michigan

Industrial For Sale or Lease

53,906
Square Feet
AVAILABLE

Site Plan



For more information, please contact:

JOHN BOYD
(248) 948 0102
jboyd@signatureassociates.com

GRANT BRUCE
(248) 948 4188
gbruce@signatureassociates.com

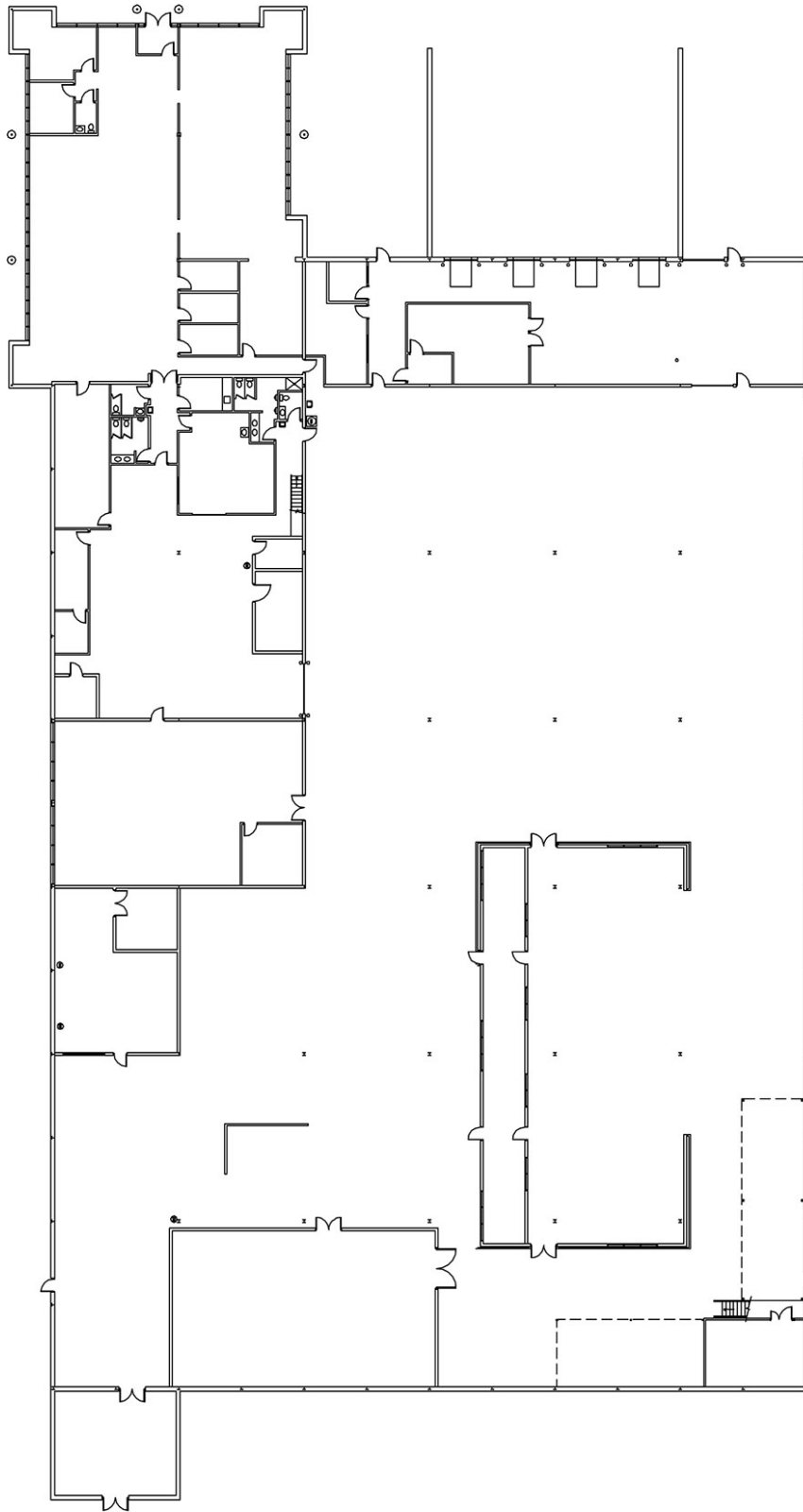
SIGNATURE ASSOCIATES
One Towne Square, Suite 1200
Southfield, MI 48076
www.signatureassociates.com

15203 S. Commerce Drive – Dearborn, Michigan

Industrial For Sale or Lease

53,906
Square Feet
AVAILABLE

Floor Plan



For more information, please contact:

JOHN BOYD
(248) 948 0102
jboyd@signatureassociates.com

GRANT BRUCE
(248) 948 4188
gbruce@signatureassociates.com

SIGNATURE ASSOCIATES
One Towne Square, Suite 1200
Southfield, MI 48076
www.signatureassociates.com

15203 S. Commerce Drive – Dearborn, Michigan

Industrial For Sale or Lease

53,906
Square Feet
AVAILABLE

Additional Photos



For more information, please contact:

JOHN BOYD
(248) 948 0102
jboyd@signatureassociates.com

GRANT BRUCE
(248) 948 4188
gbruce@signatureassociates.com

SIGNATURE ASSOCIATES
One Towne Square, Suite 1200
Southfield, MI 48076
www.signatureassociates.com

15203 S. Commerce Drive – Dearborn, Michigan

Industrial For Sale or Lease

53,906
Square Feet
AVAILABLE

Aerial



For more information, please contact:

JOHN BOYD
(248) 948 0102
jboyd@signatureassociates.com

GRANT BRUCE
(248) 948 4188
gbruce@signatureassociates.com

SIGNATURE ASSOCIATES
One Towne Square, Suite 1200
Southfield, MI 48076
www.signatureassociates.com