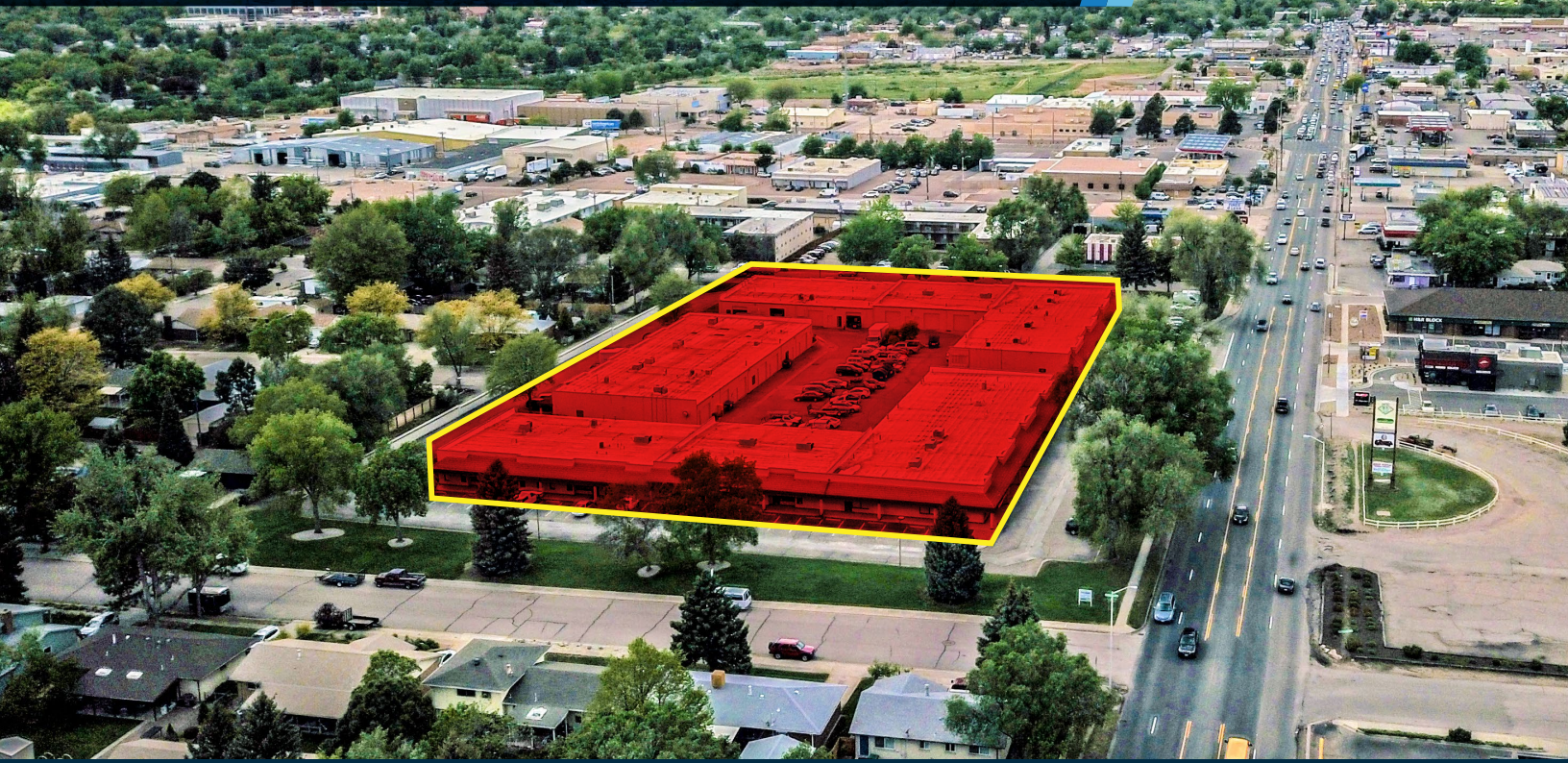


# OFFICE/WAREHOUSE SPACE FOR LEASE

# FILLMORE BUSINESS PARK

901-969 E FILLMORE ST., COLORADO SPRINGS, CO 80907



<b>AVAILABLE SPACE:</b>	Suite 943: 1,625 SF Suite 957: 1,875 SF
<b>LEASE RATE:</b>	\$9.50 SF NNN
<b>NNN EXPENSES (2026 Est.):</b>	\$4.10 / SF
<b>O.H. DOOR:</b>	8' x 10'
<b>GLA:</b>	58,625 SF
<b>LOT SIZE:</b>	4.71 Acres
<b>ZONING:</b>	MX-M/CR
<b>PARKING:</b>	2.92 / 1,000 SF
<b>TAX SCHEDULE No.:</b>	73363000015

### ★LOCATED WITHIN ENTERPRISE ZONE

- Flex space available for lease at the centrally located Fillmore Business Park.
- Easy access from I-25 and Fillmore. Flexible MX-M zoning makes this a great option for many different uses.

## DEMOGRAPHICS

### Drive Time - Minutes

	5 MIN	10 MIN	15 MIN
2025 Est. Population	16,951	100,014	278,593
2025 Est. HHs	7,895	45,371	122,105
2025 Est. Avg. HH Income	\$99,366	\$96,109	\$99,563

### Radius - Miles

	1 MILE	3 MILES	5 MILES
2025 Est. Population	11,459	95,550	262,318
2025 Est. HHs	5,520	43,880	115,034
2025 Est. Avg. HH Income	\$99,591	\$96,579	\$98,793

### Traffic Counts (ADT 2025)

E Fillmore St at Pennsylvania Ave	33,671 VPD
E Fillmore St at Century St W	34,838 VPD

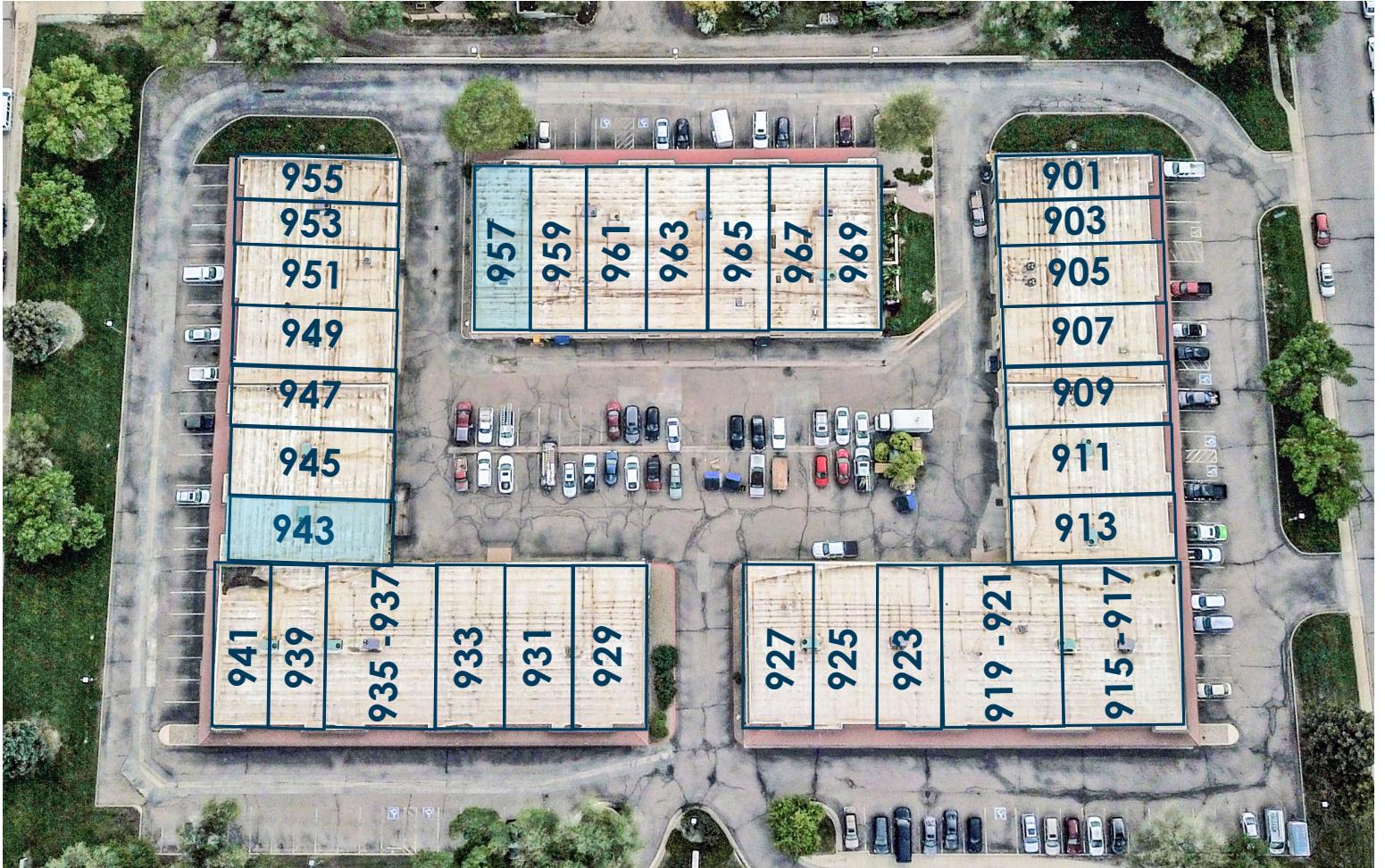
Source: 2024 U.S. Estimate, All Rights Reserved, Esri & CoStar Group



**JEREMY SHIRLEY | Broker**  
jeremys@oliverreg.com  
C: 719-244-5182

**MIKE SCRUGGS | Broker**  
mscruggs@oliverreg.com  
C: 719-510-5795

## SITE MAP | FILLMORE BUSINESS PARK



SUITE	SQUARE FEET	OFFICE/WAREHOUSE RATIO
SUITE 943	1,625 SF +/-	Approximate 55% Office / 45% Warehouse
SUITE 957	1,875 SF +/-	Approximate 60% Office / 40% Warehouse

# OFFICE/WAREHOUSE FOR LEASE FILLMORE BUSINESS PARK

901-969 EAST FILLMORE STREET, COLORADO SPRINGS, CO 80907





102 N Cascade Ave, Suite 250, Colorado Springs, CO 80903 | t. 719.598.3000 [www.oliverreg.com](http://www.oliverreg.com)

Olive Real Estate Group. Copyright 2026. Reproductions are legally prohibited without written consent.  
Information contained herein, while not guaranteed, is from sources we believe to be reliable. Prices, terms and information subject to change.