



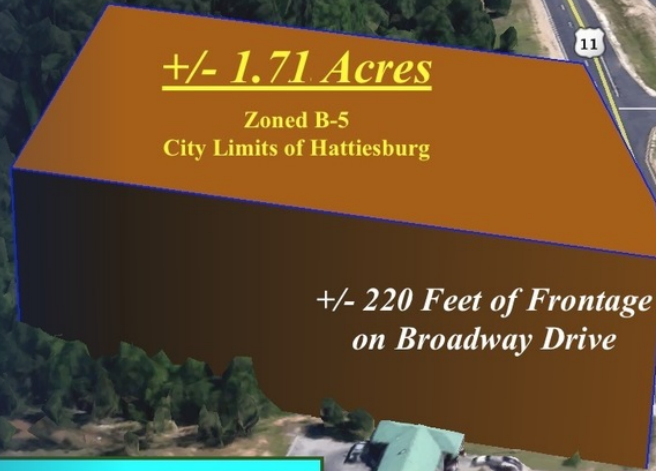
Athletic Complex



UNDEVELOPED COMMERCIAL FRONTAGE | 1.71 ACRES | OPPORTUNITY ZONE

BROADWAY DRIVE
HATTIESBURG, MS 39401

Chamberlan Carothers, CCIM, CPM
Managing Director
601.264.4622 x205
ccarothers@svn.com



Self-Serve Car Wash



© 2017 Google

Google Earth

Executive Summary



OFFERING SUMMARY

Sale Price:	\$410,000
Lot Size:	+/- 1.71 Acres
Zoning:	B-5
Market:	Hattiesburg MSA
Submarket:	South Hattiesburg
Price / SF:	\$5.50

PROPERTY OVERVIEW

This +/- 1.71 acre parcel has approximately 237 Ft of Veterans Memorial Blvd/Broadway Drive Frontage which is the gateway from I-59 to Historic Downtown Hattiesburg

Easy & quick access to I-59, US Hwy 49, & US Hwy 98

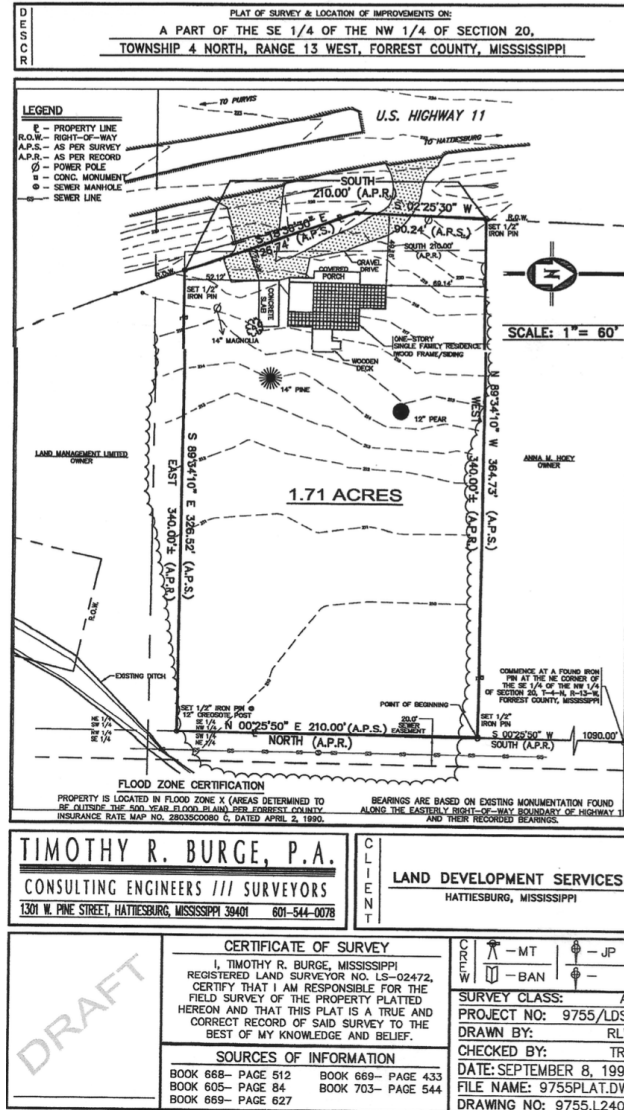
Located in an area poised for considerable growth

Close proximity to several primary and secondary schools as well as William Carey University and Pearl River CC Hattiesburg Campus

PROPERTY HIGHLIGHTS

- Main Corridor from I-59 to Historic Downtown Hattiesburg
- Easy Access to I-59 or US Hwy 49
- Close to PCS School and Tatum Sports Complex
- Flat ground - easily buildable site

Additional Photos



Additional Photos

