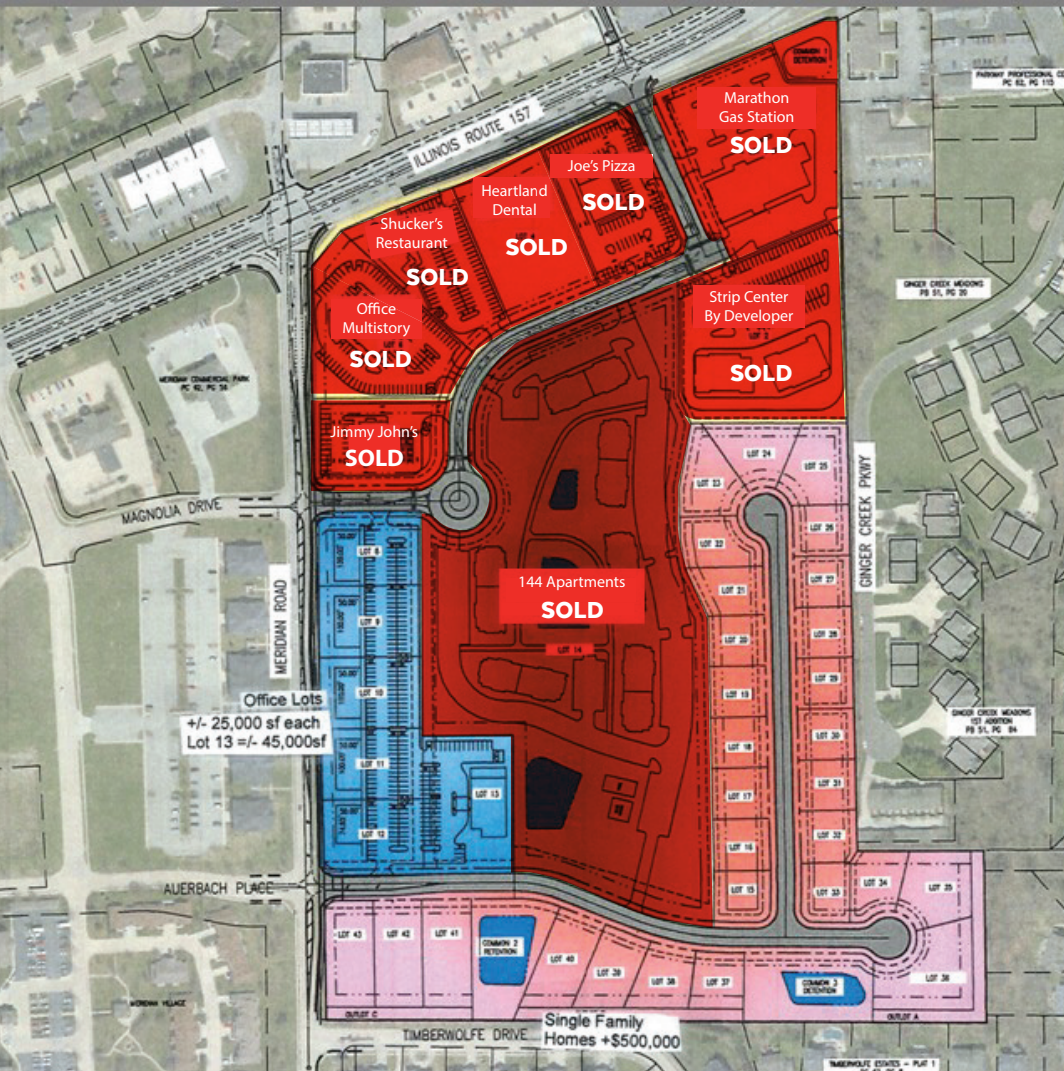
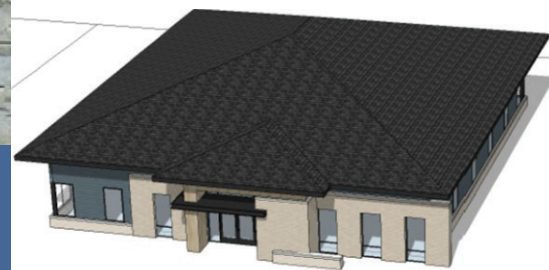


FOR SALE

COMMERCIAL & OFFICE LOTS



Apartment Complex Concept



Office Building Concept



Retail Lot 2 - 500 Plaza Drive

481 Meridian Road | Glen Carbon, Illinois 62304
(NE Corner IL Rt 157 and Meridian Road)

PROPERTY HIGHLIGHTS

- 43.3 +/- Acre Mixed Use Development
- Single-Family Home Development Available
- 5,400 +/- SF Office Available; 5 Additional Lots Available
- Lot 14: 144-Unit Upscale Apartment (**SOLD**)
- 7 Commercial Lots (**SOLD**)
- **CONTACT BROKER FOR PRICING**



Paul Nagel

Vice President
Mobile: (314) 409-1313
pnagel@gundakercommercial.com



GUNDAKER
COMMERCIAL GROUP

55 Westport Plaza Drive, Suite 200
St. Louis, MO 63146
636-728-5100
www.gundakercommercial.com



Paul Nagel

Vice President
 Mobile: (314) 409-1313
 pnagel@gundakercommercial.com



GUNDAKER
 COMMERCIAL GROUP

55 Westport Plaza Drive, Suite 200
 St. Louis, MO 63146
 636-728-5100
 www.gundakercommercial.com