

WHEATON OFFICE CONDOMINIUM FOR SALE



UNIT 205/207 – 3,195 SQ. FT. **1737 PARK EAST OFFICE CONDOMINIUM** **1737 S. Naperville Road, Wheaton, IL 60189**

Located on the east side of South Naperville Road midway between Roosevelt & Butterfield Roads

BUILDING SIZE:	28,000 Gross Sq. Ft.
UNIT/SIZE:	Unit 205/207 – 3,195 Gross Sq. Ft.
SALE PRICE:	\$ 504,810.00
CAM:	\$ 6.00 / Sq. Ft. (2024) – Est.
PROPERTY TAXES:	\$ 2.81 / Sq. Ft. (2022)
FLOOR PLAN:	Reception Area (6) Private Offices Large General Office Area Kitchen Private Washroom

SECOND FLOOR CORNER LOCATION
INDIVIDUALLY CONTROLLED HEAT/AC SYSTEM
ADA BUILDING, ELEVATOR
AMPLE ON-SITE PARKING
GREAT LOCATION WITH STOPLIGHT ENTRANCE

FOR MORE INFORMATION PLEASE CALL:

J.R. WALKER, Inc.
Real Estate Brokerage & Development
1776 S. Naperville Road, Suite 202A
Wheaton, Illinois 60189

JEFF WALKER
Ph: (630) 462-0075
Email: jrw@jrwalker.com

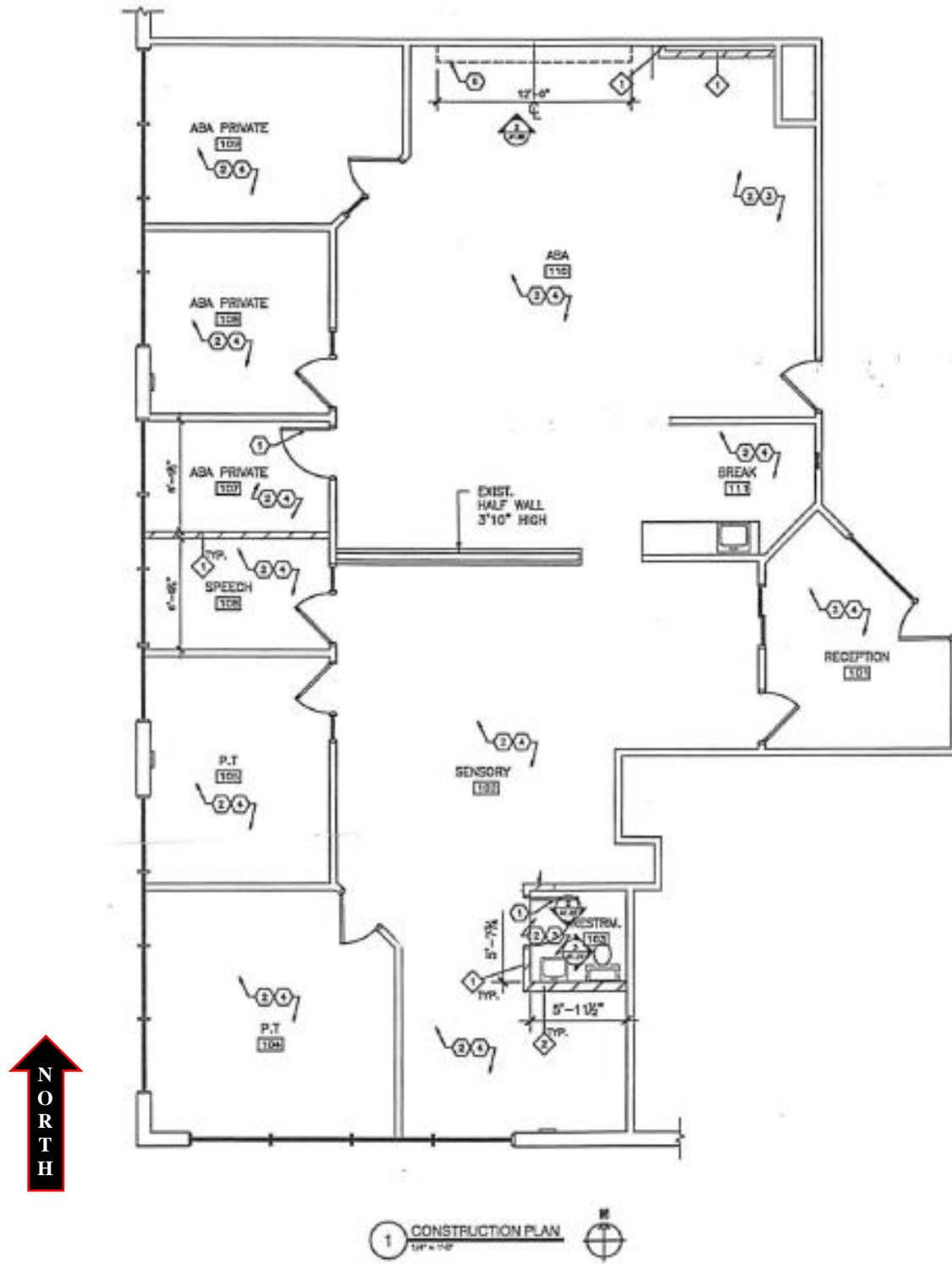
THIS INFORMATION HAS BEEN SECURED FROM SOURCES WE BELIEVE TO BE RELIABLE; HOWEVER, WE MAKE NO REPRESENTATIONS OR WARRANTIES, EXPRESS OR IMPLIED AS TO THE ACCURACY OF THE INFORMATION. SUBMITTED SUBJECT TO ERROR, CHANGE IN STATUS, OR WITHDRAWAL WITHOUT NOTICE.

1737 PARK EAST OFFICE CONDOMINIUM

1737 S. Naperville Road, Wheaton, Illinois 60189

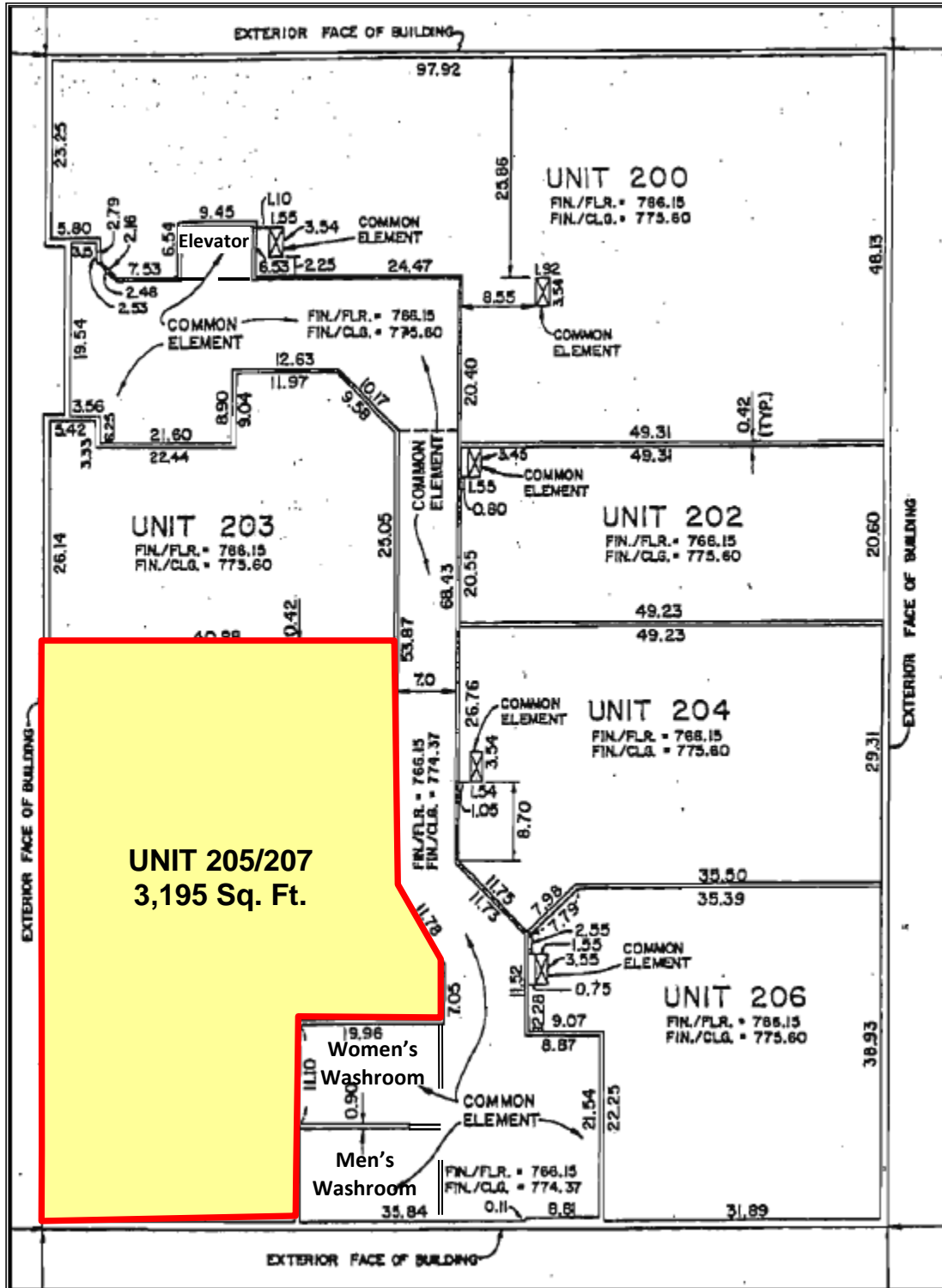
UNIT 205/207 -- 3,195 Gross Sq. Ft.

FLOOR PLAN



Note: Floor Plan layout and dimensions are approximate and subject to verification. Not to scale.

1737 PARK EAST OFFICE CONDOMINIUM
SECOND FLOOR PLAN
UNIT 205/207 - 3,195 SQ. FT.

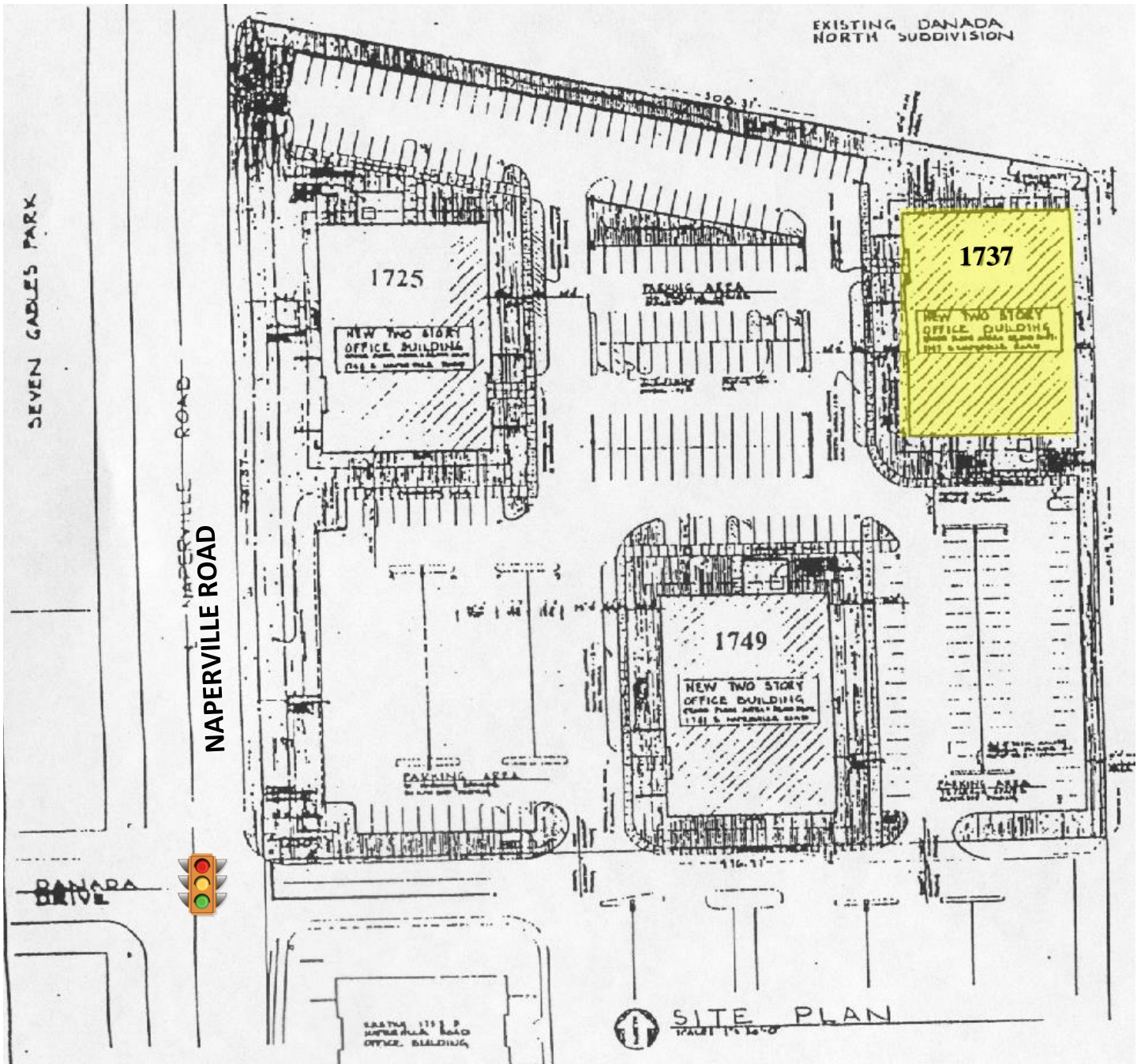


J.R. WALKER, Inc. ▪ 1776 S. Naperville Road, Suite 202A, Wheaton, IL 60189 ▪ (630) 462-0075

THIS INFORMATION HAS BEEN SECURED FROM SOURCES WE BELIEVE TO BE RELIABLE; HOWEVER, WE MAKE NO REPRESENTATIONS OR WARRANTIES, EXPRESS OR IMPLIED AS TO THE ACCURACY OF THE INFORMATION. SUBMITTED SUBJECT TO ERROR, CHANGE IN STATUS, OR WITHDRAWAL WITHOUT NOTICE.

SITE PLAN

**1737 PARK EAST OFFICE CONDOMINIUM
1737 S. NAPERVILLE ROAD
WHEATON, IL 60189**



THIS INFORMATION HAS BEEN SECURED FROM SOURCES WE BELIEVE TO BE RELIABLE; HOWEVER, WE MAKE NO REPRESENTATIONS OR WARRANTIES, EXPRESS OR IMPLIED AS TO THE ACCURACY OF THE INFORMATION. SUBMITTED SUBJECT TO ERROR, CHANGE IN STATUS, OR WITHDRAWAL WITHOUT NOTICE.

AERIAL VIEW

1737 PARK EAST OFFICE CONDOMINIUM

1737 S. NAPERVILLE ROAD
WHEATON, ILLINOIS 60189



LOCATION MAP

1737 PARK EAST OFFICE CONDOMINIUM 1737 S. NAPERVILLE ROAD, WHEATON, IL 60189

