

Industrial Property | For Lease

CBRE

90

Rotterdam Street
Saint-Augustin-de-Desmaures, Quebec

From 16,900
to 54,909 sq. ft.



90 Rotterdam Street
Saint-Augustin-de-Desmaures, Quebec

Property Overview

Area (sq. ft.)

Building

54,909

Land

143,937

Clear Height

18'

Drive-in Doors

3

Loading Docks

4

Offices

Furnished

Zoning

Industrial IA-1



Industrial Property | For Lease

Discover this high-quality industrial property located at 90 Rotterdam Street in Saint-Augustin-de-Desmaures, Quebec. Ideal for a single tenant looking to establish themselves in a dynamic area, this facility offers quality office space and a functional warehouse, perfect for production or storage. Equipped with ESFR sprinklers, it ensures effective fire protection. With easy access to major transportation routes and various infrastructures, this property will meet all your industrial needs. Don't miss this opportunity to grow your business in a strategic environment!

Net Rent
Upon request

Additionnal Rent
\$3.96 / sq. ft.

Benefits



Large surface
area



François-Leclerc
Industrial park



Sprinklers
ESFR

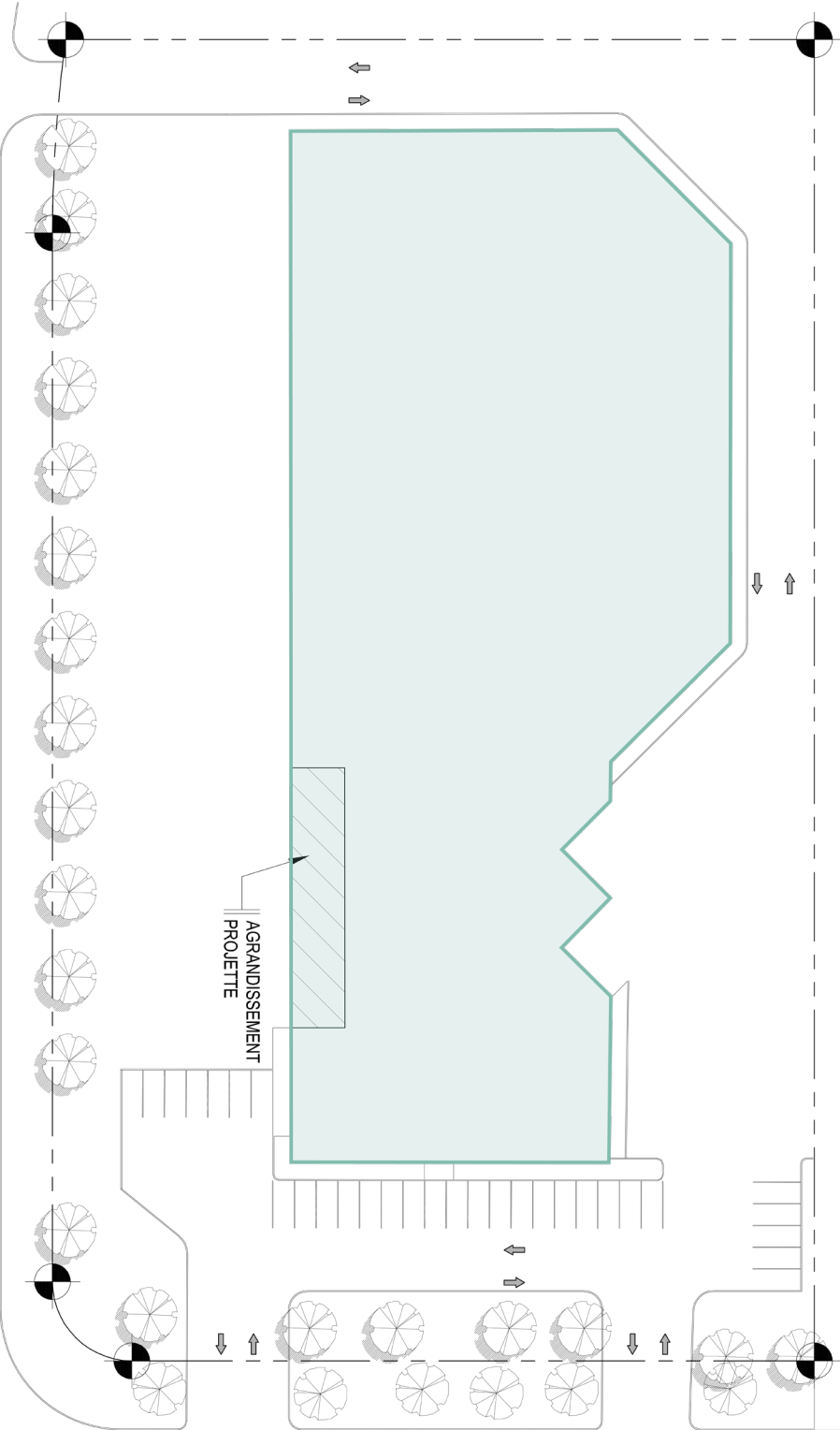


Power
400 A / 600 V







Site Plans

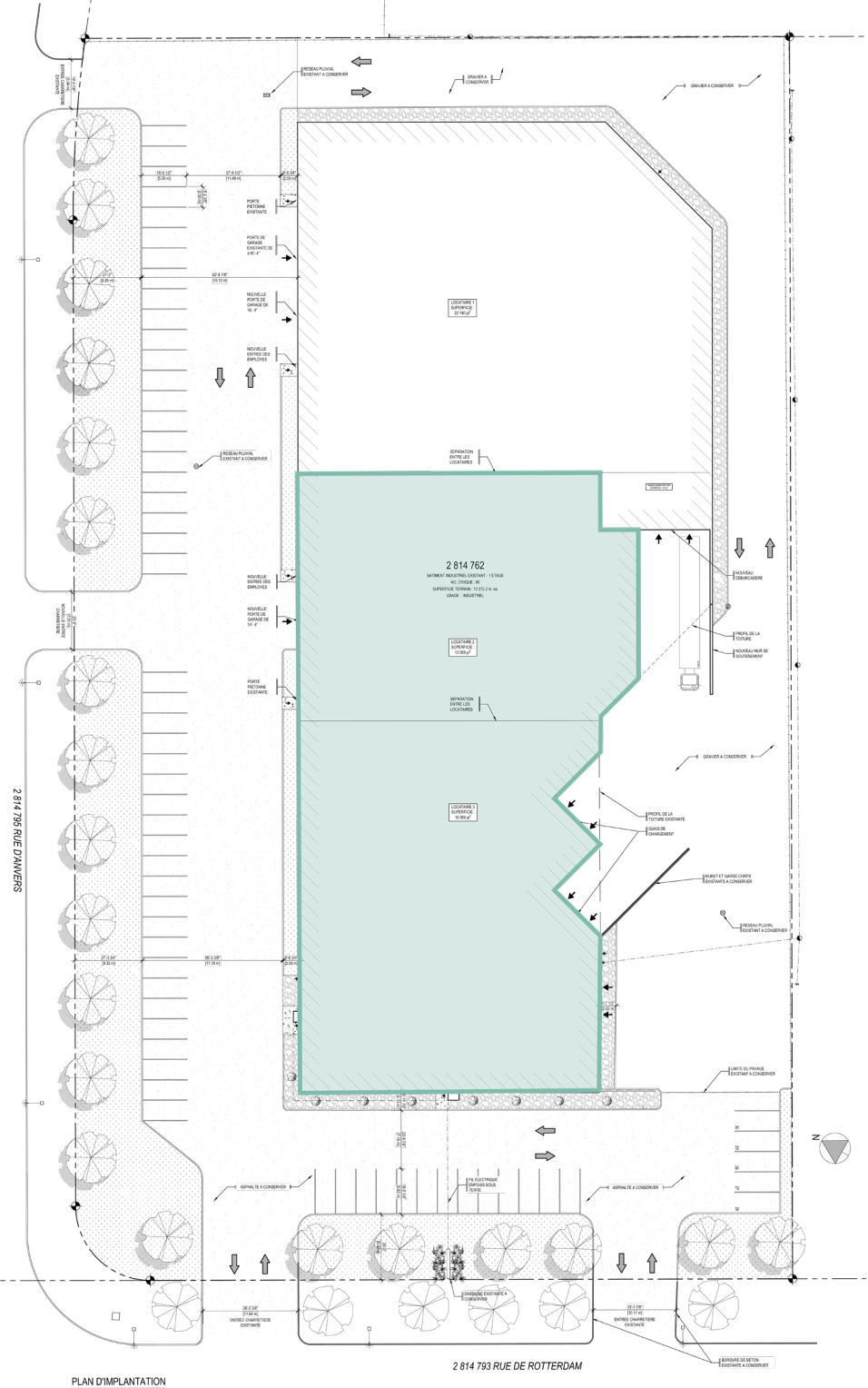
Subdivision Options







Option A

Building as is

-  Area **54,909 sq. ft.**
-  Loading Docks **4**
-  Drive-in Doors **3**
-  Clear Height **18'**

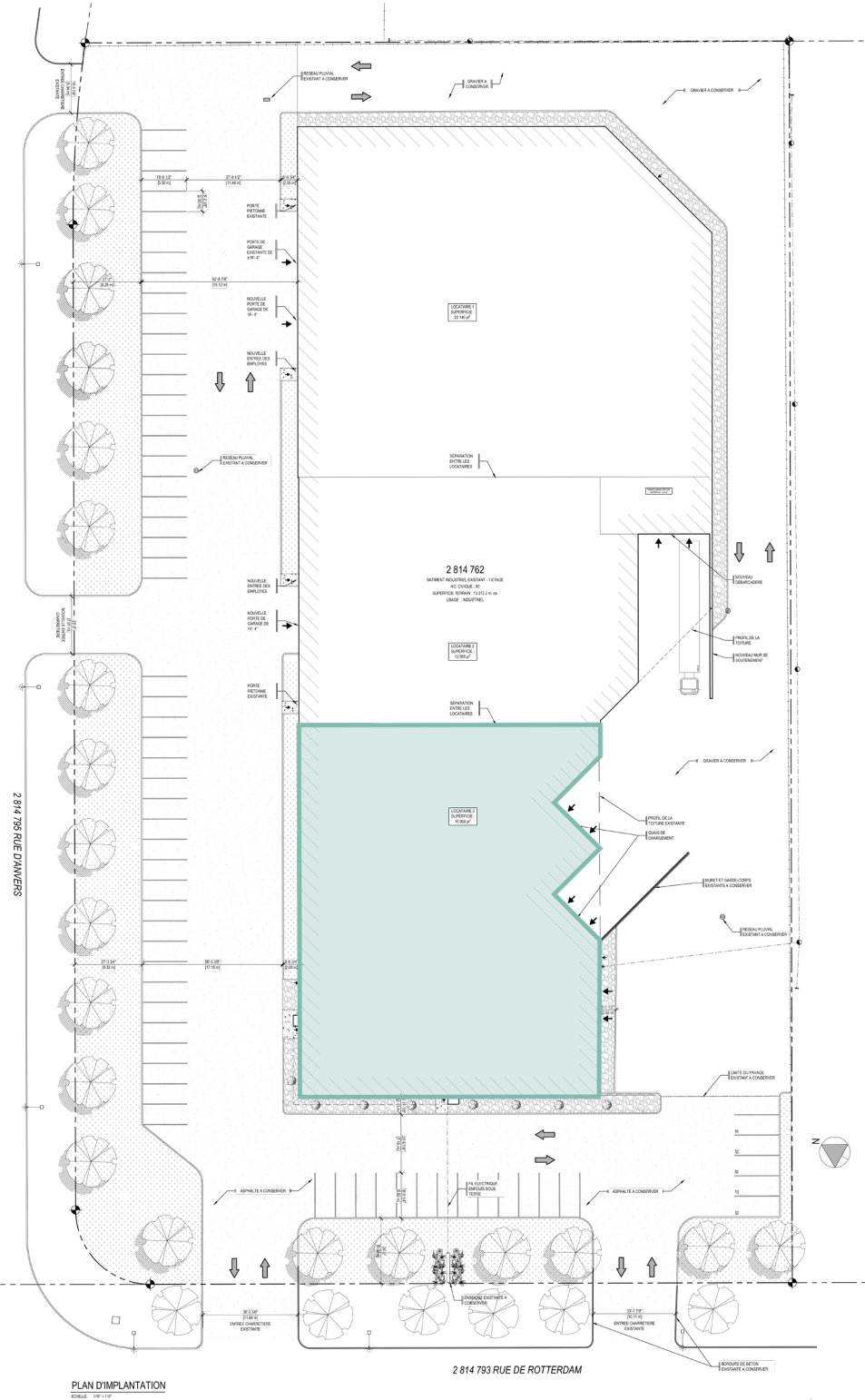


Option B





-  Area **29,755 sq. ft.**
-  Loading Docks **4**
-  Drive-in Doors **2**
-  Clear Height **18'**

Site Plans

Subdivision Options



Option C

-  Area
16,900 sq. ft.
-  Loading Docks
4
-  Drive-in Doors
2
-  Clear Height
18'



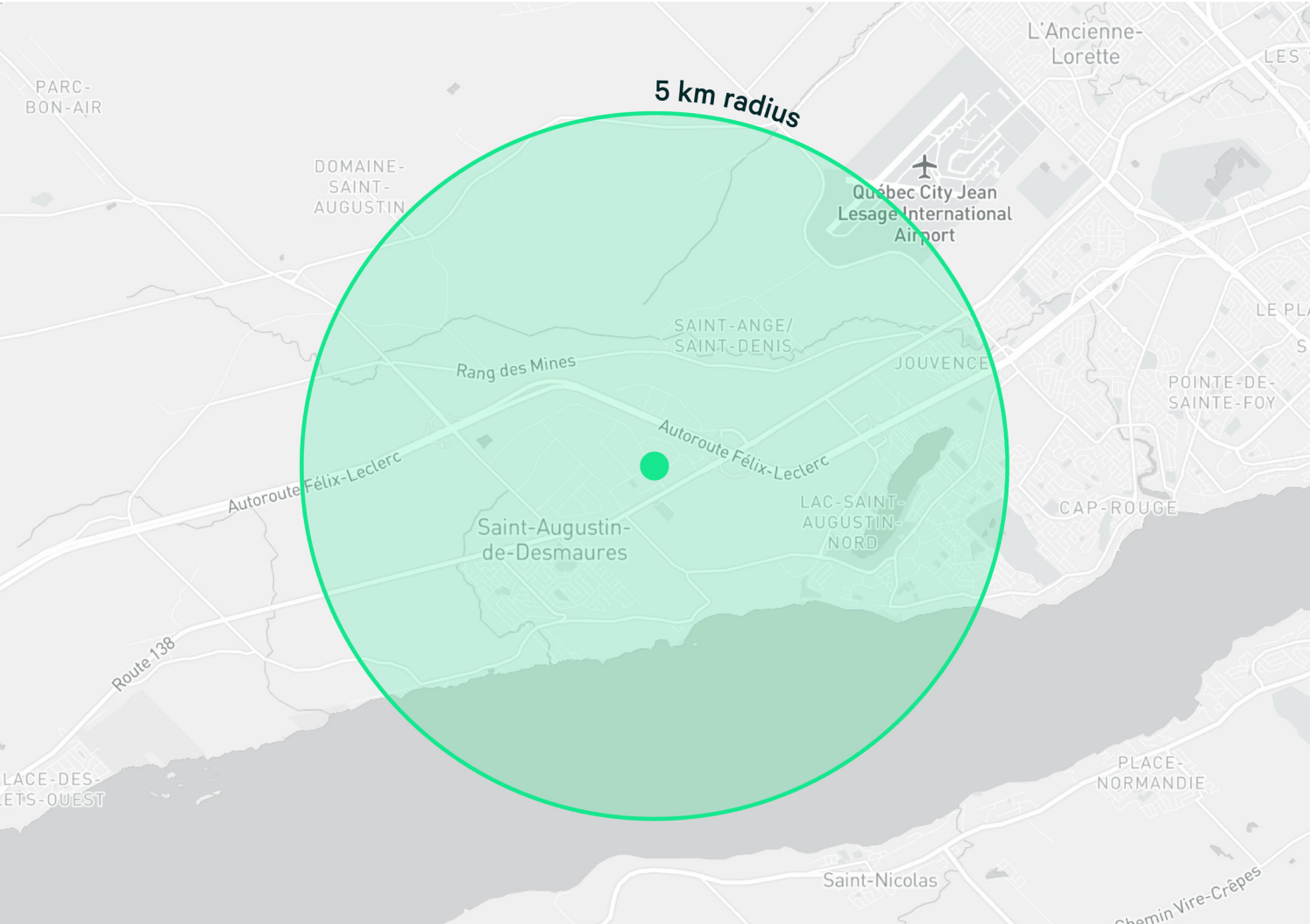
90 Rotterdam Street
Saint-Augustin-de-Desmaures, Quebec

Industrial Property | For Lease

Demographics

In a 5 km radius

Photo Gallery



2024
Population



21,726

Average
Age



48

Daytime
Population



21,057

Average
Household
Income

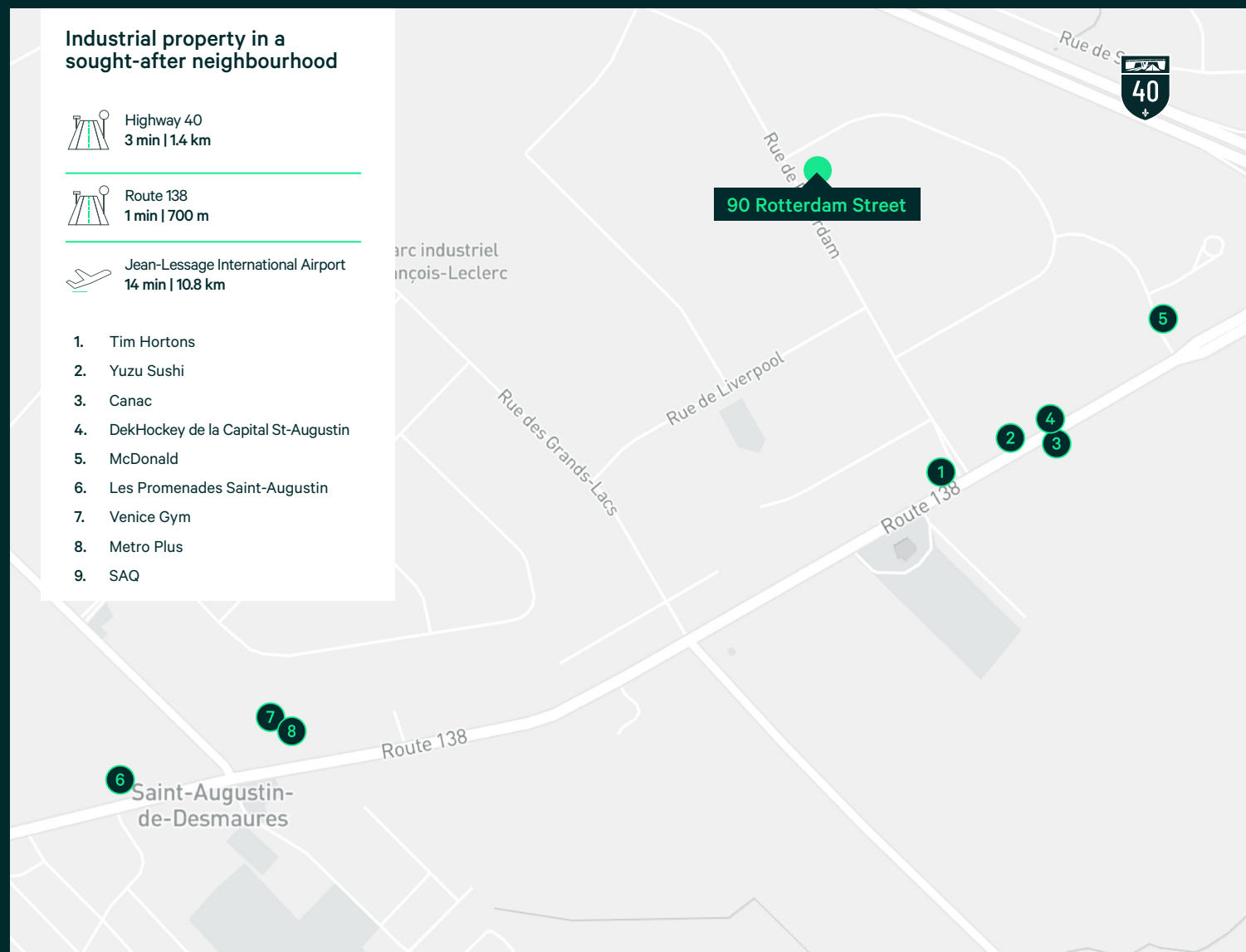


\$151,411

+20-Yr-Old
Population



17,380



Contact us for more information

Patrick Soucy, SIOR¹

Executive Vice President
+1 581 999 0120
patrick.soucy@cbre.com

Philippe Lambert²

Vice President
+1 418 570 4627
philippe.lambert@cbre.com

William Grenon³

Associate Vice President
+1 418 690 6644
william.grenon@cbre.com

Maxime Paquet⁴

Associate Vice President
+1 418 573 9974
maxime.paquet@cbre.com

Maxime St-Pierre⁵

Associate Vice President
+1 418 564 7465
maxime.st-pierre@cbre.com

1. Chartered Real Estate Broker carrying out his activities with the business corporation Patrick Soucy inc.
2. Commercial real Estate Broker
3. Commercial Real Estate Broker carrying out his activities with the business corporation William Grenon inc.
4. Commercial Real Estate Broker carrying out his activities with the business corporation Maxime Paquet inc.
5. Commercial Real Estate Broker carrying out his activities with the business corporation Maxime St-Pierre inc.

CBRE Limited, real Estate Agency | 2600 Laurier Boulevard, Suite 810, Quebec City, Quebec G1V 4W2 | +1 418 266 3640

This disclaimer shall apply to CBRE Limited, Real Estate Agency, and to all other divisions of the Corporation; to include all employees and independent contractors ("CBRE"). The information set out herein, including, without limitation, any projections, images, opinions, assumptions and estimates obtained from third parties (the "Information") has not been verified by CBRE, and CBRE does not represent, warrant or guarantee the accuracy, correctness and completeness of the Information. CBRE does not accept or assume any responsibility or liability, direct or consequential, for the Information or the recipient's reliance upon the Information. The recipient of the Information should take such steps as the recipient may deem necessary to verify the Information prior to placing any reliance upon the Information. The Information may change and any property described in the Information may be withdrawn from the market at any time without notice or obligation to the recipient from CBRE. CBRE and the CBRE logo are the service marks of CBRE Limited and/or its affiliated or related companies in other countries. All other marks displayed on this document are the property of their respective owners. All Rights Reserved. Mapping Sources: Canadian Mapping Services canadamapping@cbre.com; DMTI Spatial, Envisionics Analytics, Microsoft Bing, Google Earth.