

RETAIL / OFFICE SPACE AVAILABLE FOR LEASE

CORNER OF 19TH AND SPRING GARDEN Fairmount, Philadelphia 19130

1822 Spring Garden Street



- » +/- 1,000 – 10,000 SF divisible
- » 2nd Floor and 3rd Floor retail/office spaces available
- » Loading zone directly in front
- » Zoning: RMX-3
- » Located in the heart of Fairmount, one block from Target, Whole Foods and Jefferson Walk-In
- » Easy access to Center City, I-76, I-676 and the Benjamin Franklin Bridge

NEIGHBORS INCLUDE

Target, Whole Foods Market, The Barnes Foundation, Sabrina's Café, Community College of Philadelphia, Starbucks, Flagship Branch of Free Library of Philadelphia, Rodin Museum

DEMOGRAPHICS

Residents within 1 mile	64,173
Est. daytime population (workers within 1 mile)	182,159

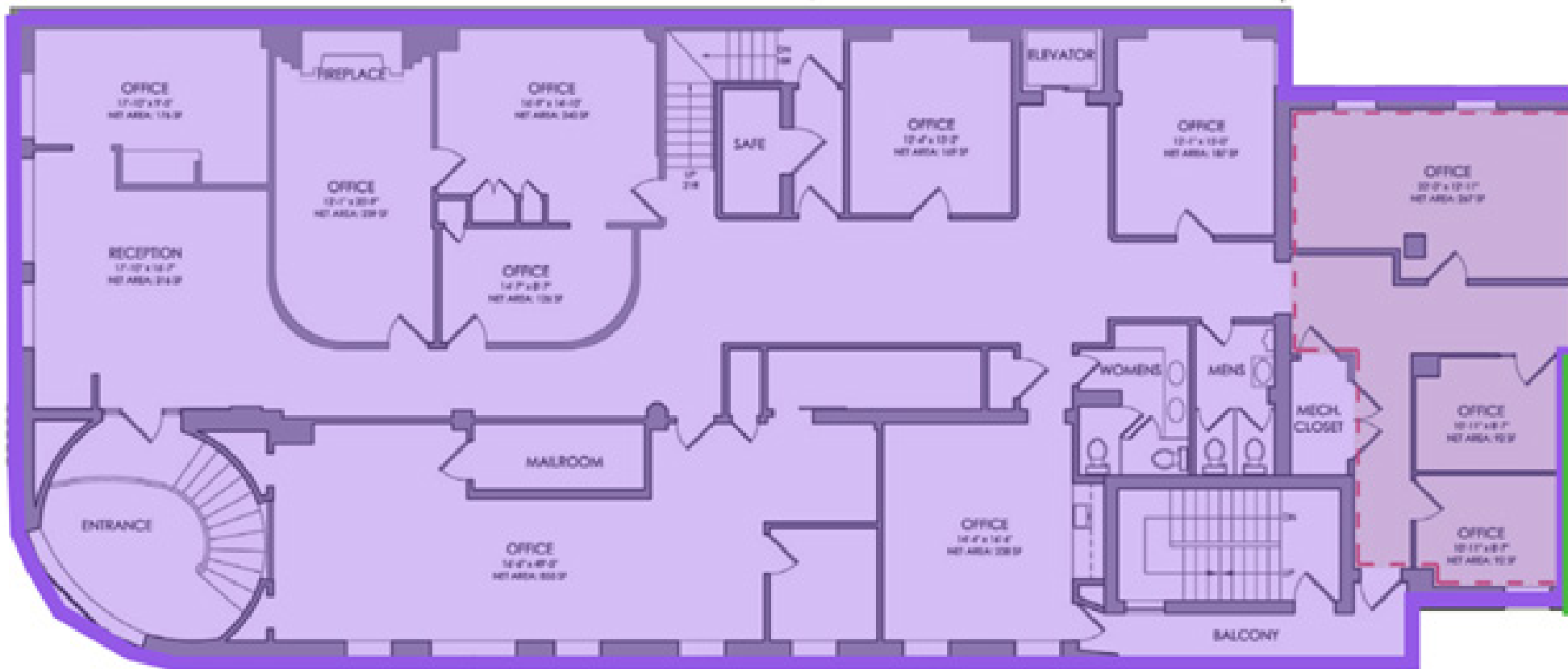
VERONICA BLUM 267.238.1728 ■ vbulm@mpnrealty.com

Information concerning this offer is from sources deemed reliable and no warranty is made as to the accuracy thereof. The offering is submitted subject to errors, omissions, change in price, or other conditions, prior sale or Lease, or withdrawal without notice. The prospective tenant should carefully verify to his/her own satisfaction all information contained herein.

Fairmount, Philadelphia 19130



Floor Plans: 2nd Floor - With Street Level Access



VERONICA BLUM 267.238.1728 ■ vbulm@mpnrealty.com

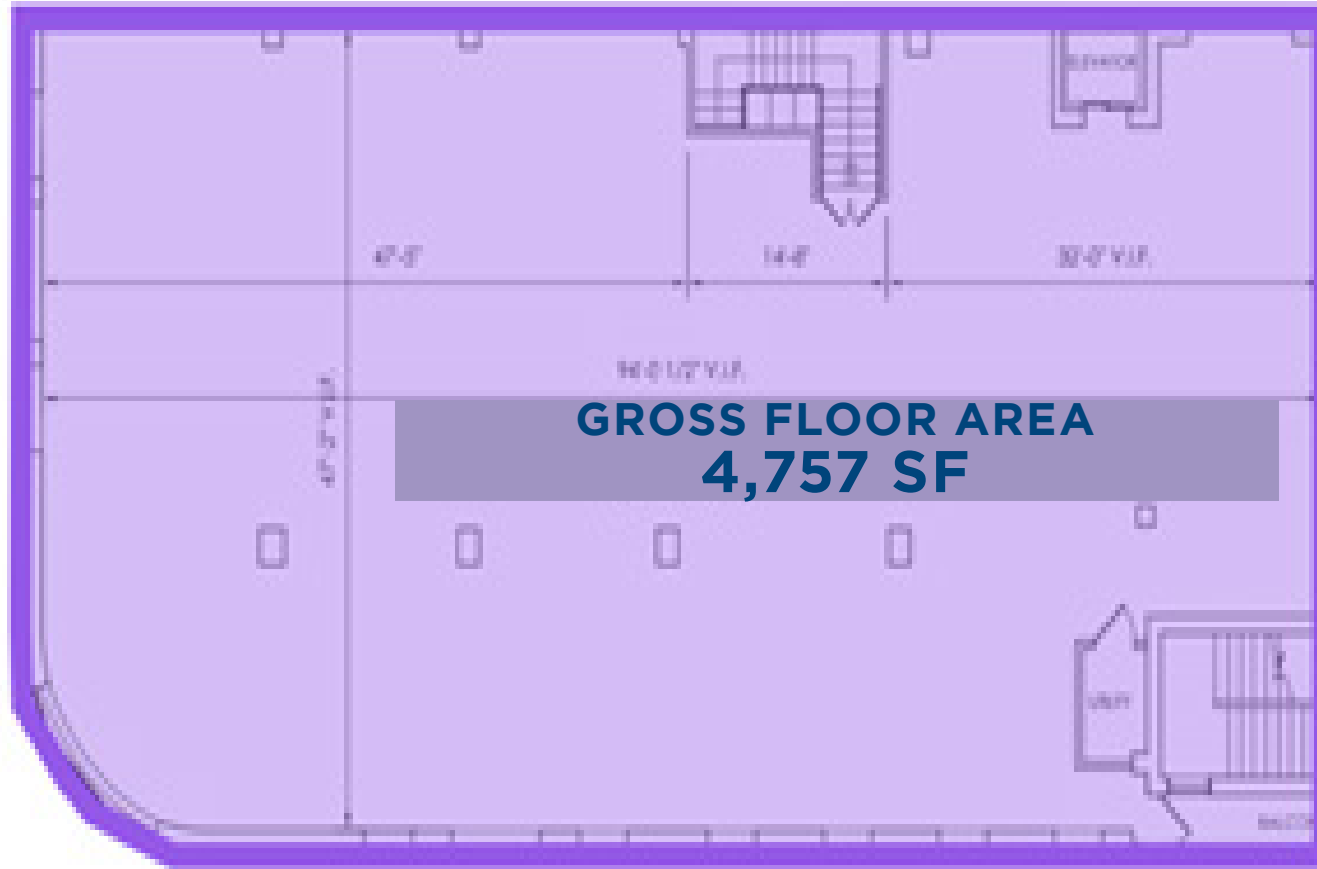
Information concerning this offer is from sources deemed reliable and no warranty is made as to the accuracy thereof. The offering is submitted subject to errors, omissions, change in price, or other conditions, prior sale or Lease, or withdrawal without notice. The prospective tenant should carefully verify to his/her own satisfaction all information contained herein.

CORNER OF 19TH AND SPRING GARDEN

Fairmount, Philadelphia 19130



Floor Plans: 3rd Floor



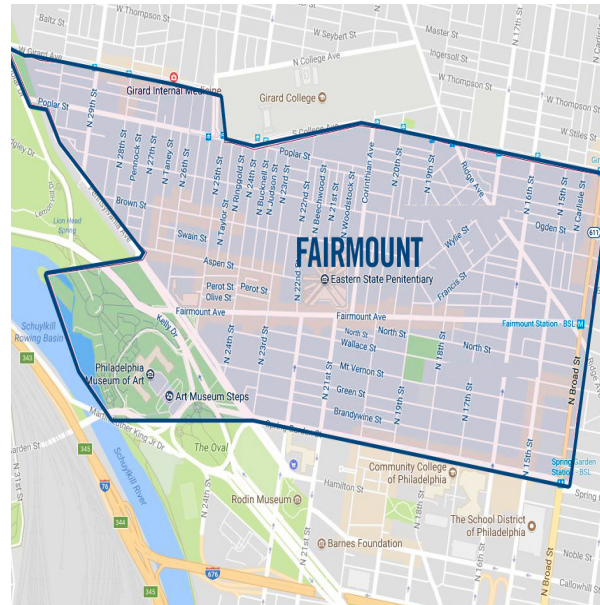
VERONICA BLUM 267.238.1728 ■ vbulm@mpnrealty.com

Information concerning this offer is from sources deemed reliable and no warranty is made as to the accuracy thereof. The offering is submitted subject to errors, omissions, change in price, or other conditions, prior sale or Lease, or withdrawal without notice. The prospective tenant should carefully verify to his/her own satisfaction all information contained herein.

CORNER OF 19TH AND SPRING GARDEN Fairmount, Philadelphia 19130



About the Neighborhood: Fairmount



The Fairmount Neighborhood is a residential area with a thriving business corridor, just northwest of Center City. Bordered by Girard Avenue to its north, Broad Street to its east, Spring Garden Street to its South, and the Schuylkill River to its West, the area is a convenient commute to many of the city's cultural attraction. The neighborhood has been increasingly drawing a crowd of young families, students, and professional singles, drawn in by the evolving restaurants, bars, cafes, and green spaces.

Historically anchored by the Philadelphia Water Works, the Eastern State Penitentiary, and Girard College, Fairmount has since built upon those institutions to transform into a charming hub for residents and tourists alike. Since its year-round opening in 2002, the Eastern State Penitentiary has drawn much tourism to the area, greatly contributing to its growing local business scene. The heavy tourism that streams from the Museum District further supplements the area's growing foot traffic.

Fairmount is located at the end of the Benjamin Franklin Parkway, a heavily populated stretch filled with Philadelphia's prominent cultural attractions and museums such as the Philadelphia Museum of Art and the Franklin Institute of Science. A vast amount of city-wide events, such as the Philadelphia Marathon and the "Made in America" Festival often take place in front of the Art Museum Steps. For this reason, the neighborhood is also often referred to as the "Art Museum Area" for its proximity to and association with the Philadelphia Art Museum.

—visitphilly.com

VERONICA BLUM 267.238.1728 ■ vbulm@mpnrealty.com

Information concerning this offer is from sources deemed reliable and no warranty is made as to the accuracy thereof. The offering is submitted subject to errors, omissions, change in price, or other conditions, prior sale or Lease, or withdrawal without notice. The prospective tenant should carefully verify to his/her own satisfaction all information contained herein.

CORNER OF 19TH AND SPRING GARDEN

Fairmount, Philadelphia 19130

Aerial Map of Neighborhood



VERONICA BLUM 267.238.1728 ■ vbulm@mpnrealty.com