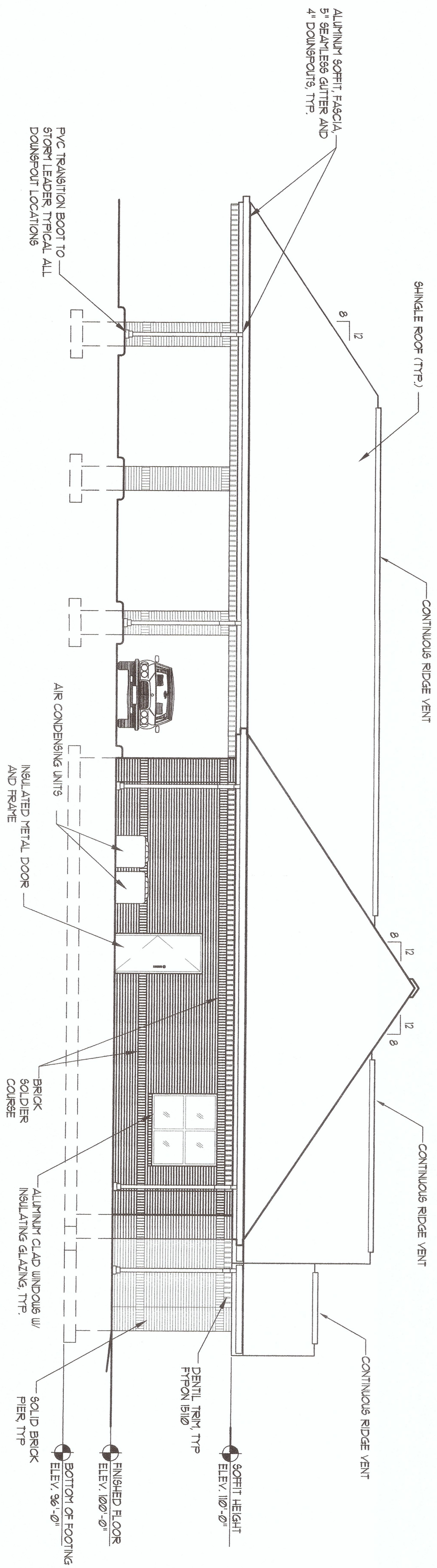


NORTH ELEVATION
SCALE: 3/16" = 1'-0"



EAST ELEVATION
SCALE: 3/16" = 1'-0"

EXTERIOR FINISHES:

- BRICK - CENTURY USED BRICK ST. LOUIS
- MORTAR - NATURAL
- SHINGLES - TAMKO HERITAGE 30, BLACK WALNUT (SIMULATED SHAKE)
- FASCIA, SOFFIT, GUTTERS & ODE - ROLLEX, BRONZE
- WINDOWS - BRONZE ALUMINUM w/ INSULATED GLASS
- DENTIL TRIM - PAINTED
- EIFS - TEXTURE: SANDBLAST, COLOR: CHINA WHITE
- ALUMINUM ENTRY -
 - 1. EFCO SYSTEM 403, 1" INSULATED GLASS, 2' X 4 1/2" FRAMING MEMBERS, BRONZE
 - 2. DOOR FRAME EFCO SYSTEM 402, BRONZE
 - 3. DOORS, EFCO SYSTEM 0300, 5 1/2" BOTTOM RAIL, STD. HARDWARE w/ DEADBOLT KEYPED LOCK
- CONTINUOUS GEAR HINGE, STD. FISH/PULL BAR DORRYA 88 DOOR CLOSURES, BRONZE.
- THRESHOLDS: SCHULTER AE-100, BRUSHED ALUMINUM

NOTES:

- 1. BRICK PIERS AT BUILDING CORNERS TO HAVE A 3/4" PROJECTION FROM PLANE OF WALL, M456.

REVISIONS		
NO.	DATE	REMARKS

NORTH AND EAST BUILDING ELEVATIONS

NEW BANKING FACILITY
SCHUYLER STATE BANK
 1661 EAST JACKSON STREET
 MACOMB, MCDONOUGH COUNTY, ILLINOIS 61455

FITCH-FITZGERALD, INC.
 ARCHITECTS • ENGINEERS • ENVIRONMENTAL

1905 MONTANA DRIVE, SUITE 10
 SPRINGFIELD, ILLINOIS 62704
 PHONE: 217.523.6340 FAX: 217.523.8216

DRAWN BY
EPM

PROJECT NO.
0534

DATE:
10 FEB 06

SHEET
A5
OF 10