



550 Smithtown
Bypass Suite 101
Smithtown, NY 11787
Office: (631) 656-0360
Fax: (631) 656-0359

For Sale

886 Rte. 25A

Miller Place, NY 11764



PROPERTY FEATURES

- Lot Size: +/- 0.75 Acres (32,960 SF)
- Zoning: J2 - Town of Brookhaven
- Taxes: \$9,899.79
- Nursery on Highly-Trafficked Rte. 25A
- Parking Lot (Easily Accommodates Large Deliveries)
- Three Greenhouses + Framing for Additional Greenhouse(s)
- 2 Sheds, 2 Electric Meters, 1,000 Gallon Propane Tank
- 2 Curb Cuts, Fenced Perimeter w/ Gate Entrances

Asking Price: \$795,000

*Property for sale, not the business.
As the business is still operational,
we kindly ask that the sale remains
confidential.

FOR MORE INFORMATION

Jack Jawdat

Cell: (631) 838-8788

Office: 631-656-0360

Email: jjawdat@nycreli.com

**NEW YORK COMMERCIAL
REAL ESTATE**

Nycreli.com

Check us out on Social Media!





**550 Smithtown
Bypass Suite 101
Smithtown, NY 11787
Office: (631) 656-0360
Fax: (631) 656-0359**

Executive Summary

**Property Address: 886 Rte. 25A
Miller Place, NY 11764**

Property Description/Type: Land/Nursery

Lot Size: +/- 0.75 AC (32,960 SF)

Frontage: 200'+ on Rte. 25A

Parking: Ample

- Customer Lot
- Additional Fenced-In Parking
- Large Delivery Accessible

Electric Service: Two Metered Units

1,000 Gallon Propane Tank on Premise (Permit Transferrable)

Cesspool

Three Greenhouses + Framing for Additional Greenhouse(s)

2 Sheds

2 Curb Cuts

Taxes: +/- \$9,899.79

Zoning: J2

Asking Price: \$795,000



**550 Smithtown
Bypass Suite 101
Smithtown, NY 11787
Office: (631) 656-0360
Fax: (631) 656-0359**

Photos

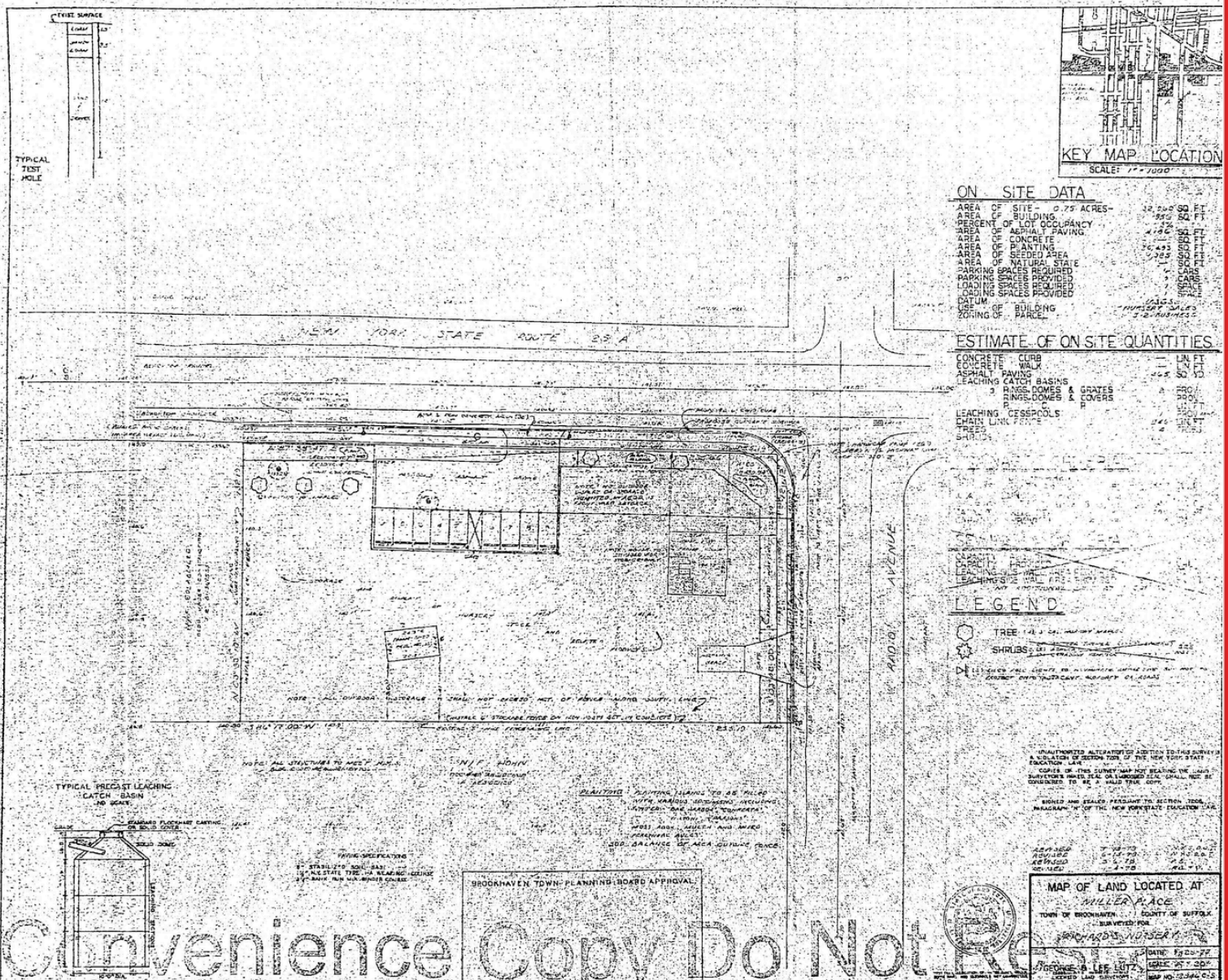




**New York
Commercial
Real Estate**

**550 Smithtown
Bypass Suite 101
Smithtown, NY 11787
Office: (631) 656-0360
Fax: (631) 656-0359**

Survey



Convenience Copy Do Not Rescan