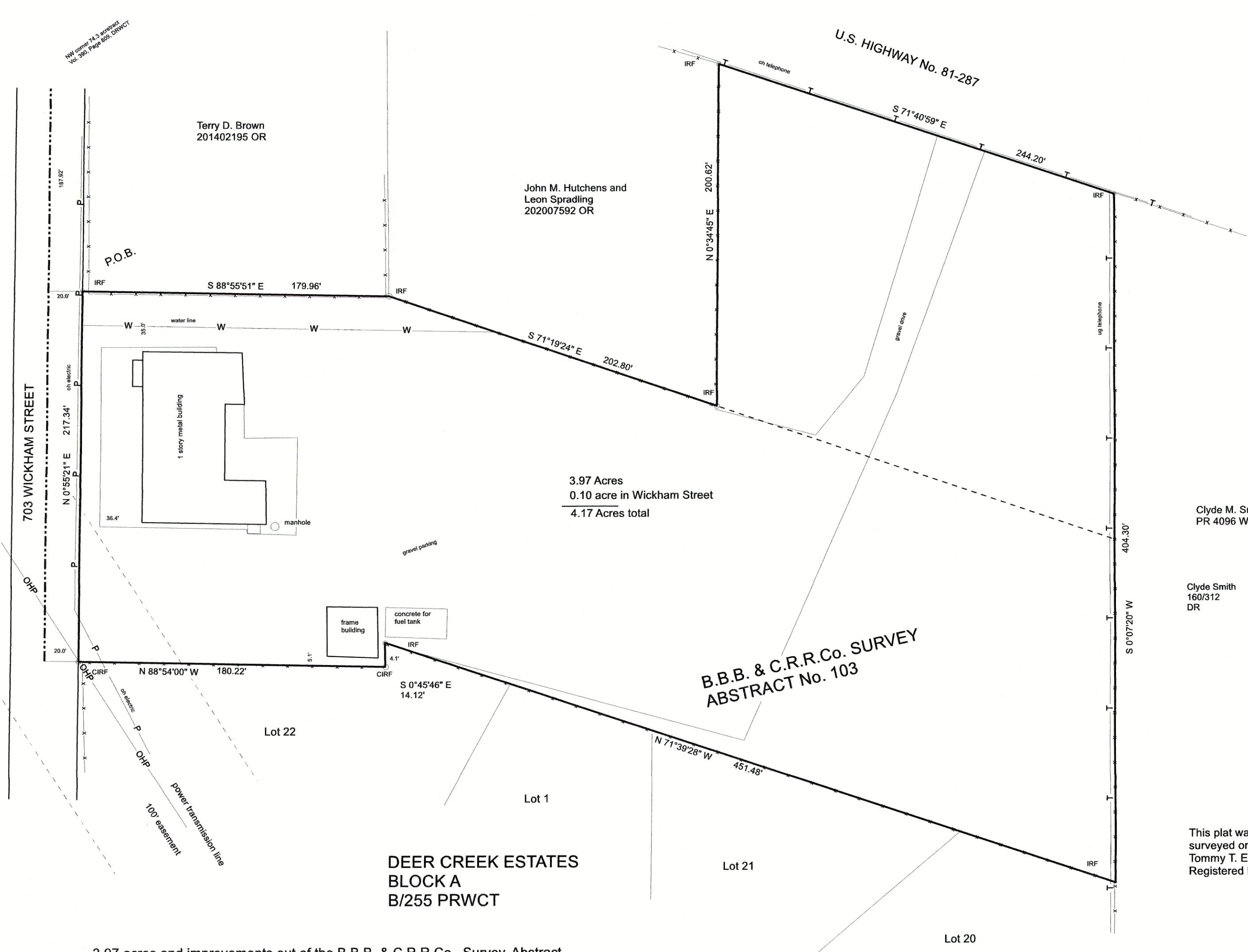
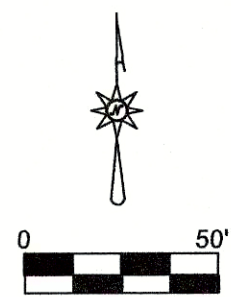


The bearings are from the Texas Coordinate System, North Central Zone, NAD 83 Datum. The combine scale factor is 0.99988. The distances are ground measurements.



3.97 acres and improvements out of the B.B.B. & C.R.R.Co.. Survey, Abstract No. 103, City of Alford, Wise County, Texas, being the same tract of land as deeded to Terry Dan Brown in Volume 423, page 789, Deed Records, Wise County, Texas.. see field notes

3.97 Acres
0.10 acre in Wickham Street
4.17 Acres total

**B.B.B. & C.R.R.Co. SURVEY
ABSTRACT No. 103**

Clyde M. Smith II
PR 4096 WCT

Clyde Smith
160/312
DR

This plat was prepared from a true and accurate survey as surveyed on the ground by me on this date.
Tommy T. Edwards
Registered Professional Land Surveyor No. 1869

EDWARDS SURVEYING, LLC
PROFESSIONAL LAND SURVEYING & MAPPING
TBPLS CA# 100494-00 OBLPELS CA# 4780

208 W. WALNUT ST., P.O. BOX 618
DECATUR, TEXAS 76234
(940) 627-2961
WWW.SURVEYTXOK.COM
2021-024
March 15, 2021

