



**For Lease**

Bldg. 1: ±3,946 SF  
Office/Showroom  
Site Size: 2.34 Acres

Bldg. 2: 35,287 SF  
Warehouse  
Site Size: 3.37 Acres

Combined Site Size:  
5.71 Acres

**2217 S. Loomis Street**

Chicago, Illinois 60608

**PROPERTY HIGHLIGHTS**

**Building 1 | Office/Showroom**

- Office/Showroom: ±3,946 SF
- Site Size: 2.34 acres
- Lease Rate: STO




±3,946 SF OFFICE/  
SHOWROOM




2.34 ACRES

**Building 2 | Warehouse**


- Available Size: 35,287 SF
  - Divisible to 9,000 SF
- Office Size: 685 SF
- Site Size: 3.37 acres
- Lighting: New LED lights
- Zoned PMD-11A - Uses include:
  - Building materials sales
  - Contractor storage yard
  - Heavy equipment rental/sales
  - Trailer & Container parking
  - Truck/Fleet maintenance
- Proximity to I-55, I-90 and I-290 and Chicago Business District
- Lease Rate: STO




35,287 SF  
WAREHOUSE



3.37 ACRES



7 DRIVE-IN DOORS



2,000 AMPS



19'6" CEILING  
HEIGHT



EXPANSIVE CAR/  
TRAILER PARKING

**Contact**

Alex Sutterer  
+1 630 693 0644  
asutterer@hiffman.com

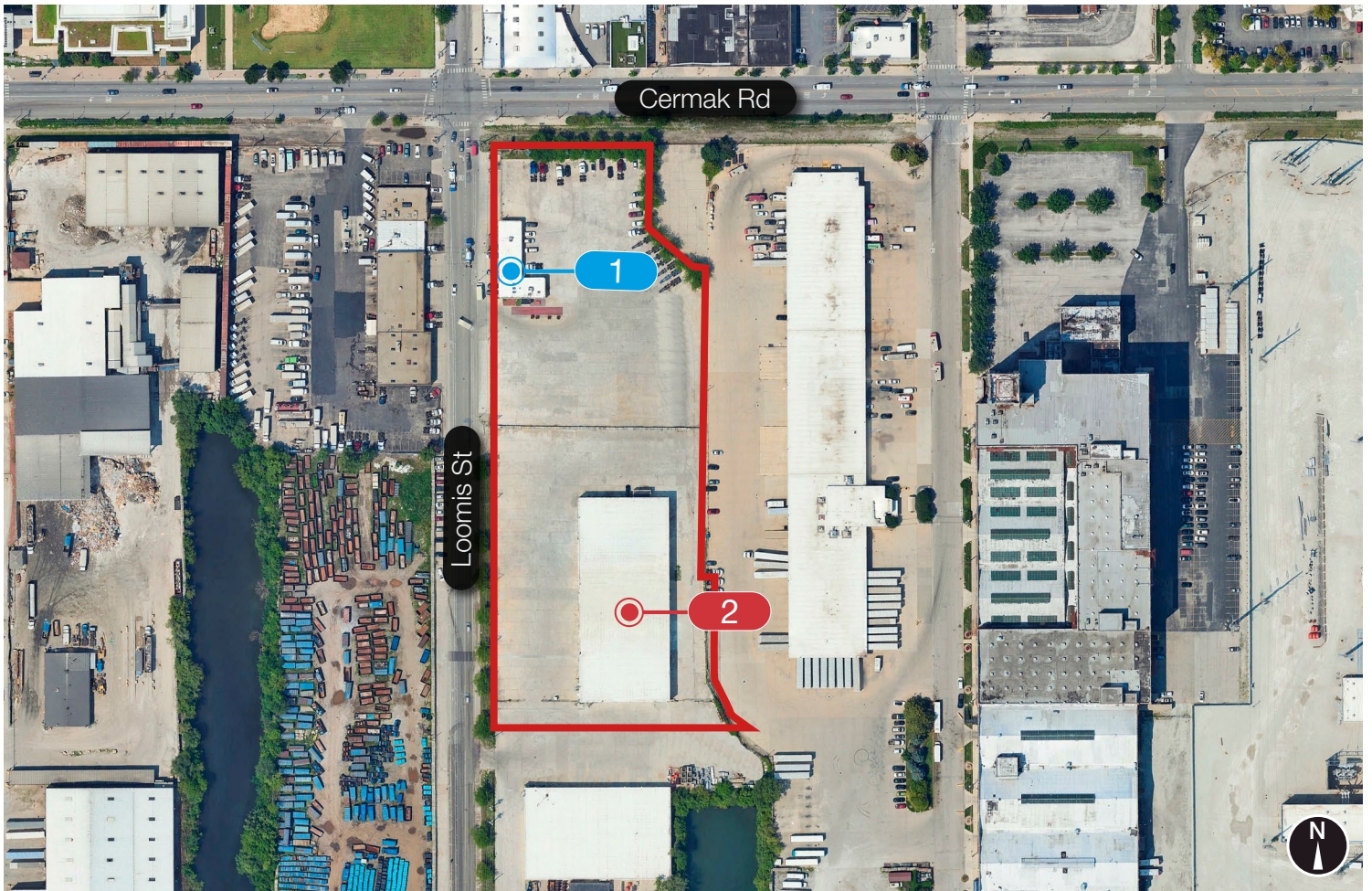
John Whitehead  
+1 630 693 0643  
jwhitehead@hiffman.com

Jack Brennan  
+1 630 317 0754  
jbrennan@hiffman.com

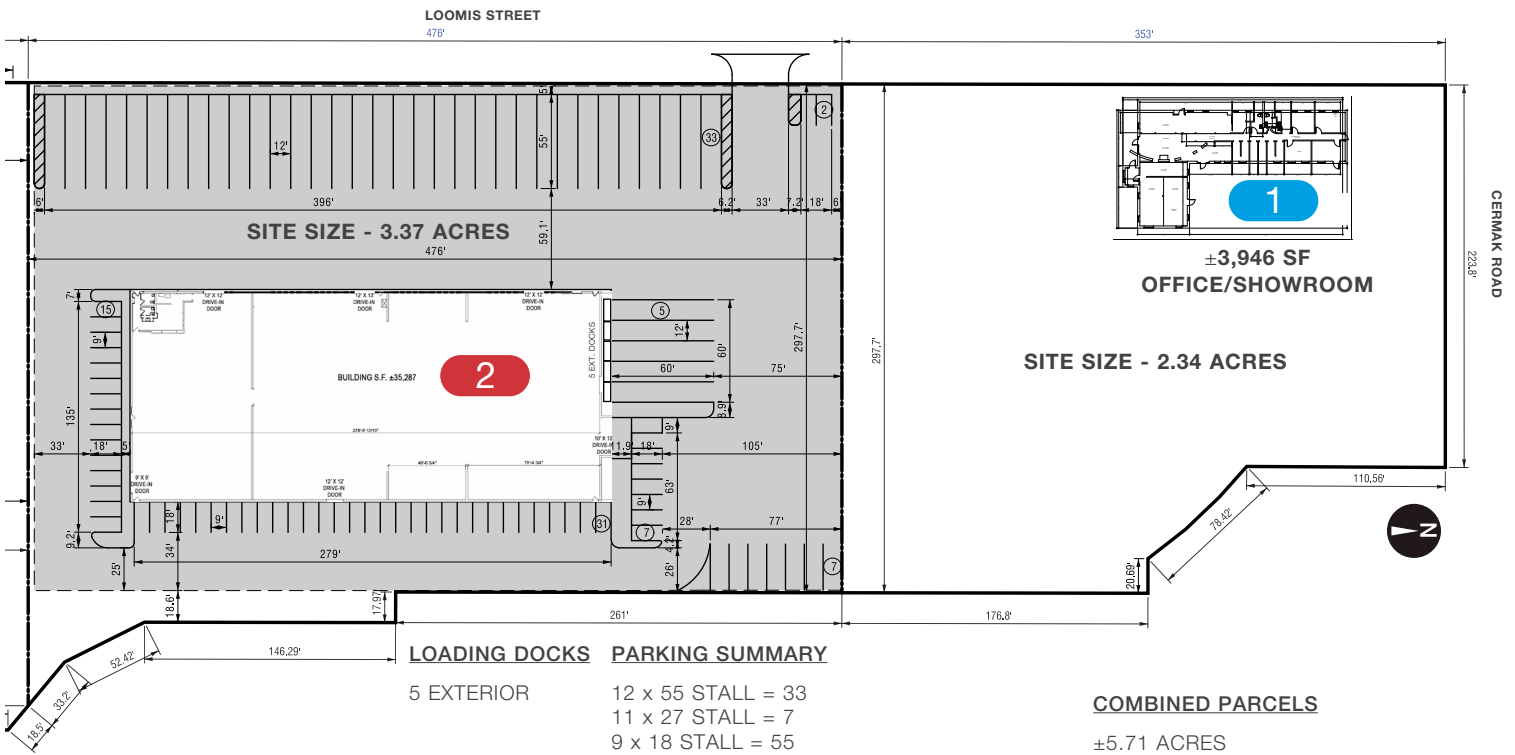
One Oakbrook Terrace  
Suite 400  
Oakbrook Terrace, Illinois 60181  
+1 630 932 1234

NO WARRANTY OR REPRESENTATION, EXPRESS OR IMPLIED, IS MADE AS TO THE ACCURACY OF THE INFORMATION CONTAINED HEREIN, AND THE SAME IS SUBMITTED SUBJECT TO ERRORS, OMISSIONS, CHANGE OF PRICE, RENTAL OR OTHER CONDITIONS, PRIOR SALE, LEASE OR FINANCING, OR WITHDRAWAL WITHOUT NOTICE, AND OF ANY SPECIAL LISTING CONDITIONS IMPOSED BY OUR PRINCIPALS NO WARRANTIES OR REPRESENTATIONS ARE MADE AS TO THE CONDITION OF THE PROPERTY OR ANY HAZARDS CONTAINED THEREIN ARE ANY TO BE IMPLIED.





## CONCEPTUAL PARKING AND DOCK PLAN



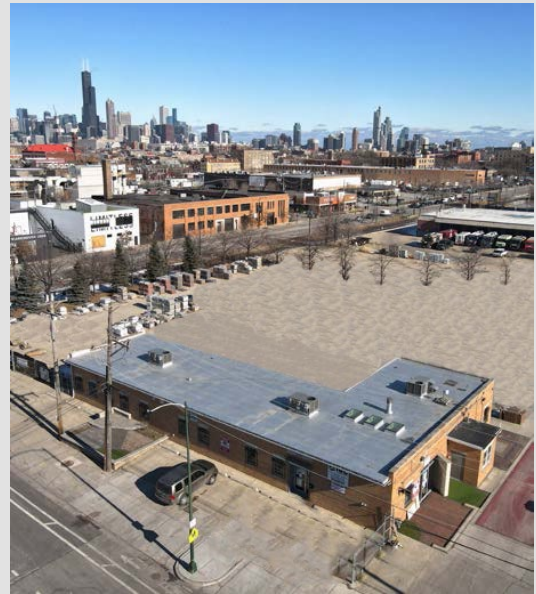




BLDG. 2: WAREHOUSE



BLDG. 1: OFFICE/SHOWROOM



One Oakbrook Terrace  
Suite 400  
Oakbrook Terrace, Illinois 60181  
+1 630 932 1234