



CUSHMAN &  
WAKEFIELD



**FOR LEASE**

# BROOKHOLLOW PARK

911 CENTRAL PARKWAY NORTH  
SAN ANTONIO, TEXAS 78232

BRYAN SETHNEY  
Managing Director  
+1 210 305 4280  
[bryan.sethney@cushwake.com](mailto:bryan.sethney@cushwake.com)

MEREDITH MUECKE HOWARD  
Director  
+1 512 804 9116  
[meredith.howard@cushwake.com](mailto:meredith.howard@cushwake.com)

4040 Broadway Street  
Suite 602  
San Antonio, Texas 78209  
[cushmanwakefield.com](http://cushmanwakefield.com)

# PROPERTY DESCRIPTION

Brookhollow Park is a 4-story, Class A office building located 1/10 mile from Highway 281 between Bitters and Oak Shadows. The Property has structured parking for 150 spaces with covered access to building lobby and is 24/7 card key access.

## PROPERTY FEATURES

- Building Size: 102,466 SF
- Submarket: North Central
- Parking Ratio: 4.7/1,000 RSF

## PROPERTY DETAILS

**RENTAL RATE** \$18.00 SF/YR





## SPACE AVAILABLE

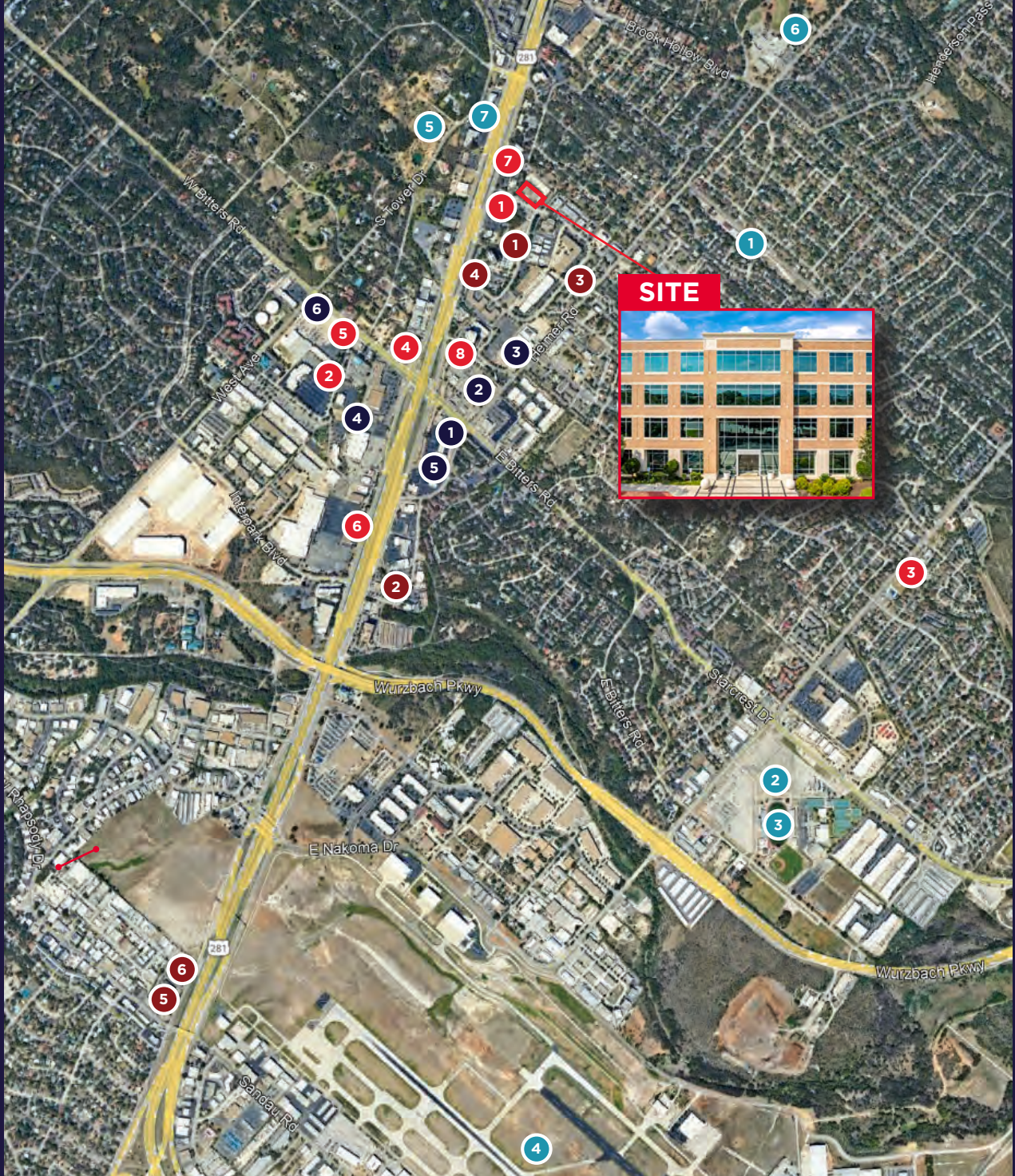
SPACE	SPACE USE	LEASE RATE	LEASE TYPE	SIZE (RSF)
Suite 110/120	Office	\$18.00/SF/Yr	Full Service	5,975 RSF
Suite 130	Office	\$18.00/SF/Yr	Full Service	2,338 SF
Suite 175	Office	\$18.00/SF/Yr	Full Service	2,116 RSF
Suite 350	Office	\$18.00/SF/Yr	Full Service	8,279 RSF



**LOBBY**

**AERIAL**





# AMENITY MAP

## RESTAURANTS

- 1 Alamo Cafe
- 2 Max and Louie's New York Diner
- 3 Gogi Street (Korean Fusion)
- 4 Denny's
- 5 Starbucks
- 6 Panera Bread
- 7 IHOP
- 8 Olive Garden Italian Restaurant

## BUSINESSES

- 1 Office Depot
- 2 Target
- 3 The Home Depot
- 4 Goodwill Store and Donation Station
- 5 FedEx Office Print & Ship Center
- 6 7-Eleven

## POINTS OF INTEREST

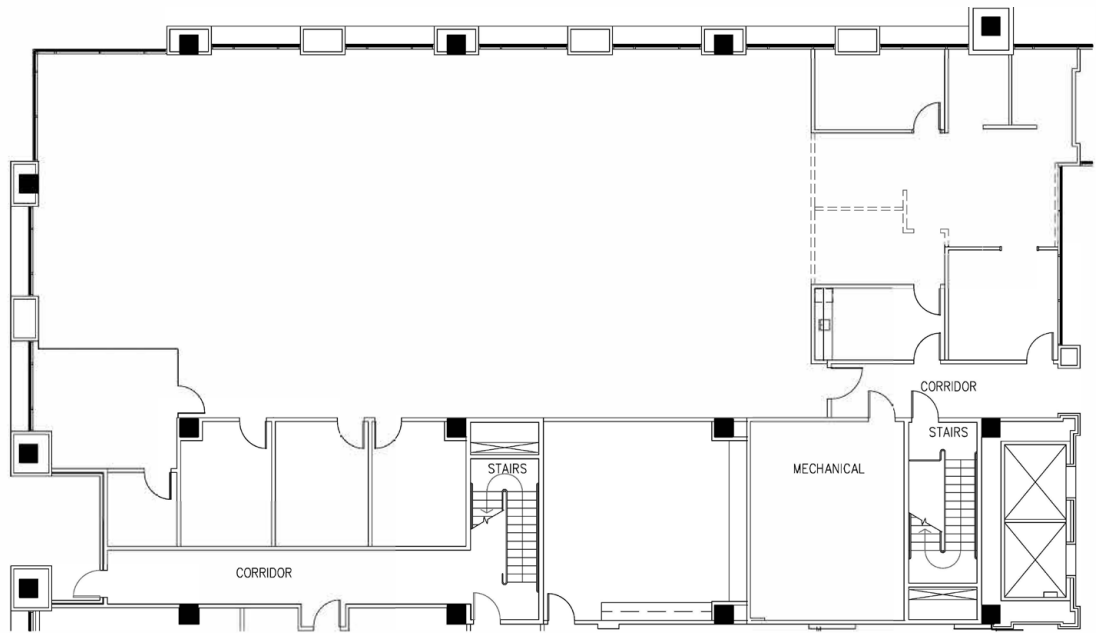
- 1 Twin-Oaks Airport-T94
- 2 Blossom Athletic Center
- 3 Jerry Comalander Stadium
- 4 San Antonio International Airport
- 5 Sunset Hills Park
- 6 Blossom Park
- 7 One Medical park

## HOTELS

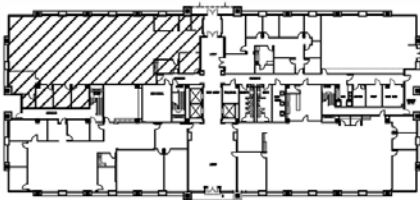
- 1 Comfort Suites San Antonio
- 2 Hilton Garden Inn
- 3 La Calera Apartments
- 4 Extended Stay America San Antonio TX Airport
- 5 Studio 6 San Antonio TX Airport
- 6 SureStay Plus by Best Western San Antonio

# FLOOR PLAN

SUITES 110/120 - 5,975 RSF

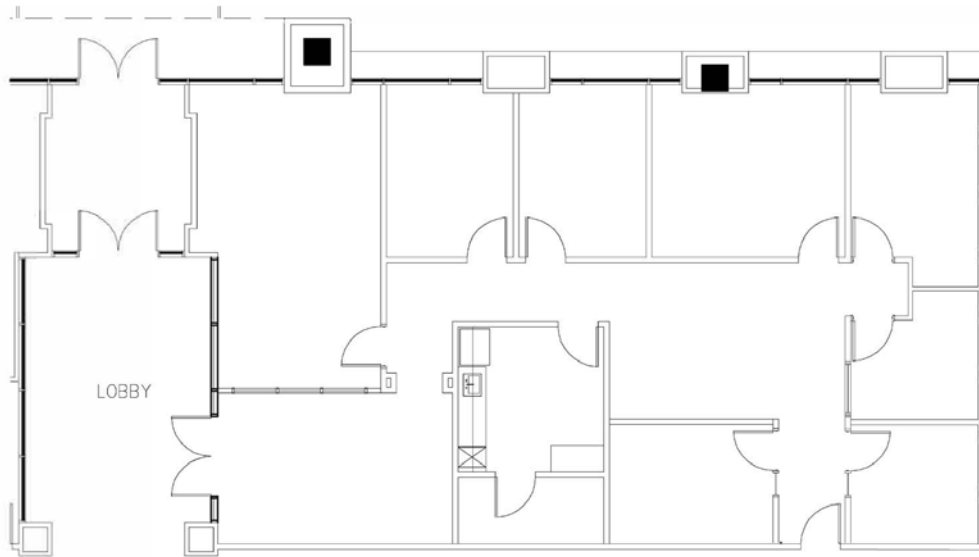


LOCATION MAP

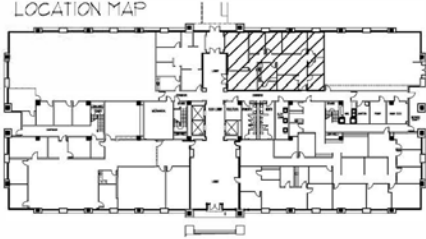


# FLOOR PLAN

**SUITE 130 - 2,338 SF**



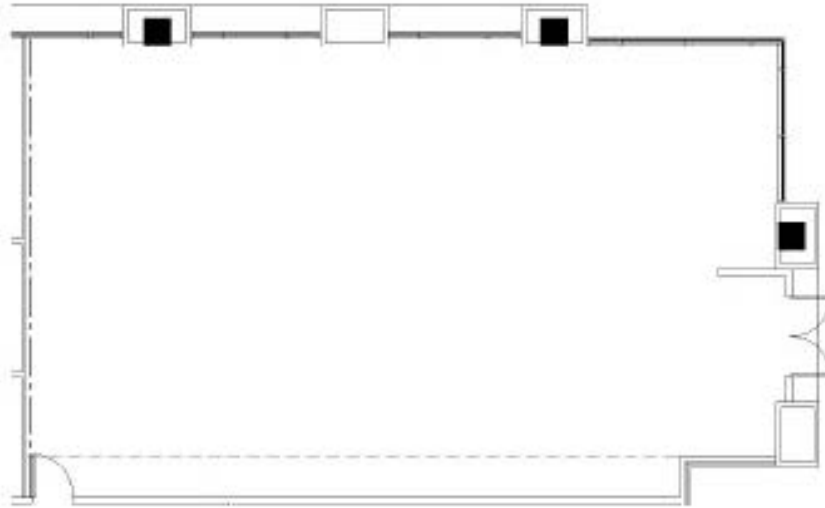
LOCATION MAP



SCALE: 3/32" = 1'-0"

# FLOOR PLAN

SUITE 175 - 2,116 SF

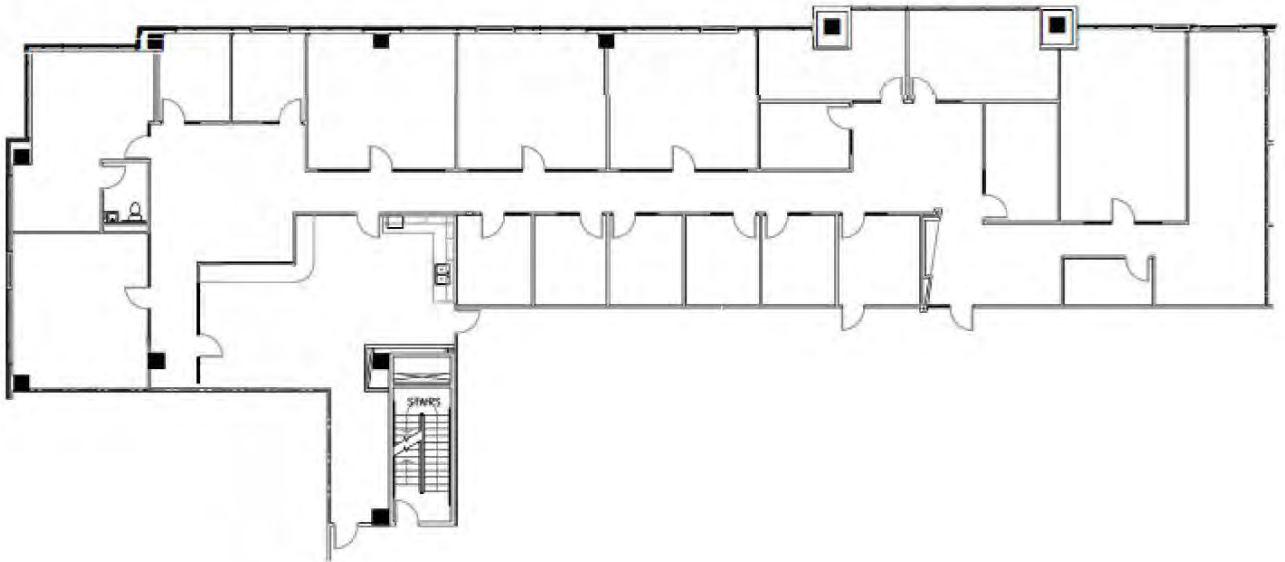


SCALE: 3/32" = 1'-0"

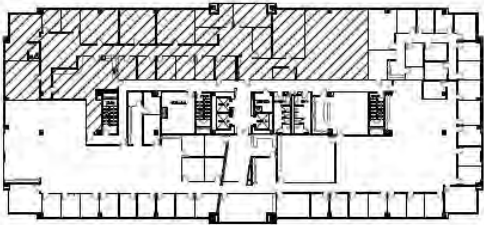


# FLOOR PLAN

**SUITE 350 - 8,279 SF**



LOCATION MAP





**FOR MORE INFORMATION, PLEASE CONTACT:**

**BRYAN SETHNEY**  
Managing Director  
+1 210 305 4280  
[bryan.sethney@cushwake.com](mailto:bryan.sethney@cushwake.com)

**MEREDITH MUECKE HOWARD**  
Director  
+1 512 804 9116  
[meredith.howard@cushwake.com](mailto:meredith.howard@cushwake.com)

4040 Broadway Street  
Suite 602  
San Antonio, Texas 78209  
[cushmanwakefield.com](http://cushmanwakefield.com)

©2024 Cushman & Wakefield. All rights reserved. The information contained in this communication is strictly confidential. This information has been obtained from sources believed to be reliable but has not been verified. NO WARRANTY OR REPRESENTATION, EXPRESS OR IMPLIED, IS MADE AS TO THE CONDITION OF THE PROPERTY (OR PROPERTIES) REFERENCED HEREIN OR AS TO THE ACCURACY OR COMPLETENESS OF THE INFORMATION CONTAINED HEREIN, AND SAME IS SUBMITTED SUBJECT TO ERRORS, OMISSIONS, CHANGE OF PRICE, RENTAL OR OTHER CONDITIONS, WITHDRAWAL WITHOUT NOTICE, AND TO ANY SPECIAL LISTING CONDITIONS IMPOSED BY THE PROPERTY OWNER(S). ANY PROJECTIONS, OPINIONS OR ESTIMATES ARE SUBJECT TO UNCERTAINTY AND DO NOT SIGNIFY CURRENT OR FUTURE PROPERTY PERFORMANCE.

