

CALDWELL PARK SHOPPING CENTER HIGH PROFILE SHOP SPACE FOR LEASE

3214 PACIFIC AVENUE, STOCKTON, CA

LISTING DATA

AVAILABLE SF: 1,970± SF
(Former Nail Salon)

COMMENTS:

- High profile retail space facing Pacific Avenue in the heart of Stockton!
- Located directly across the street from an established Savemart grocery store
- Walking distance to University of the Pacific with enrollment of over 6,000 students
- Strong residential surrounding the site- ideal for neighborhood retail uses

ECONOMIC DATA

LEASE RATE: \$1.25/SF per month, NNN

DEMOGRAPHICS AND TRAFFIC COUNTS

DEMOGRAPHICS:	1 MILE	2 MILES	3 MILES
Population:	22,927	76,056	134,707
Average HH Income:	\$69,099	\$59,878	\$63,501

TRAFFIC COUNTS:

Pacific Ave: 32,600± Cars ADT (2019)
Alpine Ave: 18,800± Cars ADT (2019)



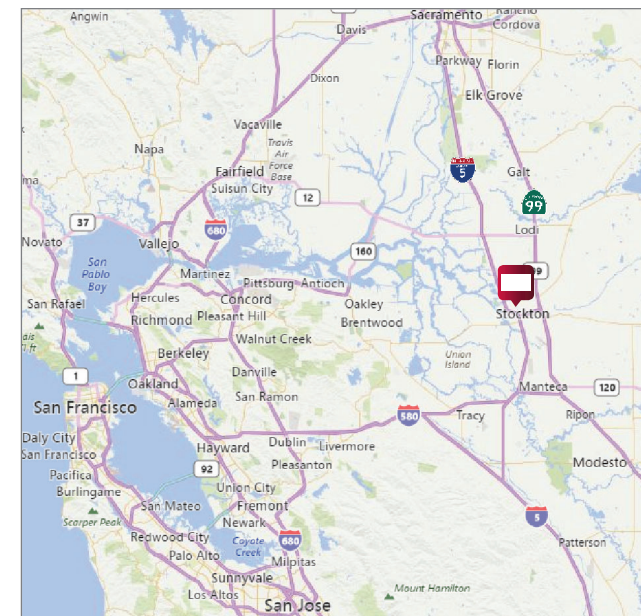
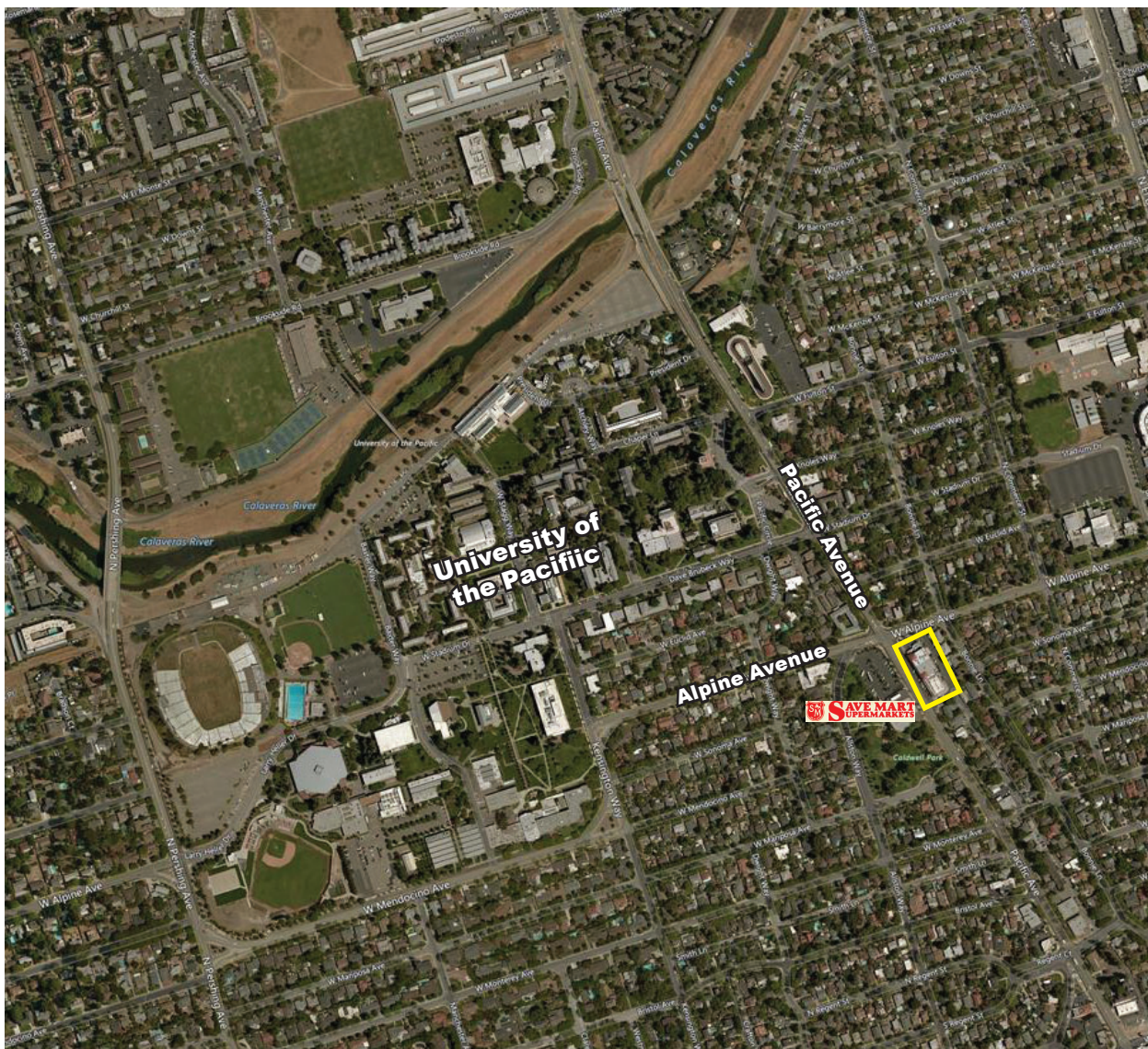
CONTACT

Christopher W. Sill
BRE #01188616
csill@lee-associates.com
D 209.983.6837

All information furnished regarding property for sale, rental or financing is from sources deemed reliable, but no warranty or representation is made to the accuracy thereof and same is submitted to errors, omissions, change of price, rental or other conditions prior to sale, lease or financing or withdrawal without notice. No liability of any kind is to be imposed on the broker herein.

CALDWELL PARK SHOPPING CENTER HIGH PROFILE SHOP SPACE FOR LEASE

3214 PACIFIC AVENUE, STOCKTON, CA



CONTACT

Christopher W. Sill
BRE #01188616
csill@lee-associates.com
D 209.983.6837

All information furnished regarding property for sale, rental or financing is from sources deemed reliable, but no warranty or representation is made to the accuracy thereof and same is submitted to errors, omissions, change of price, rental or other conditions prior to sale, lease or financing or withdrawal without notice. No liability of any kind is to be imposed on the broker herein.