

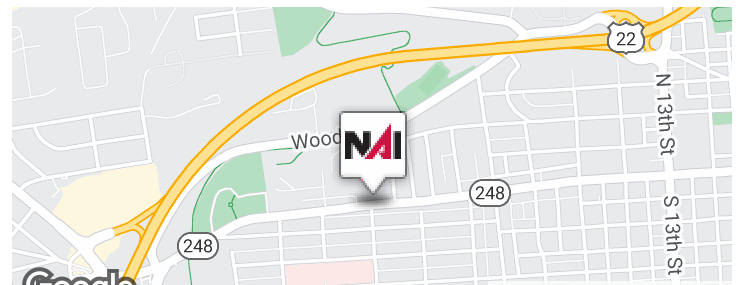


1991 Northampton St

Easton, Pennsylvania 18042

Property Overview

- ±5,800-25,000 SF office space available
- Aggressive lease rate!
- Main common entrance includes vestibule, lobby, and common area restrooms
- Each suite occupies a single floor and offers a private entrance/exit
- 9' ceilings and sprinklers throughout
- Private offices of various sizes to accommodate single or multiple desks
- Office doors feature sidelight windows to improve natural light to interior spaces
- Conference and training rooms, expansive flex rooms for variety of uses
- Ample on-site parking and adjacent private lots



Offering Summary

| | |
|----------------------|---------------------|
| Lease Rate: | \$10.00 SF/yr (NNN) |
| Available SF: | 5,800 - 25,000 SF |

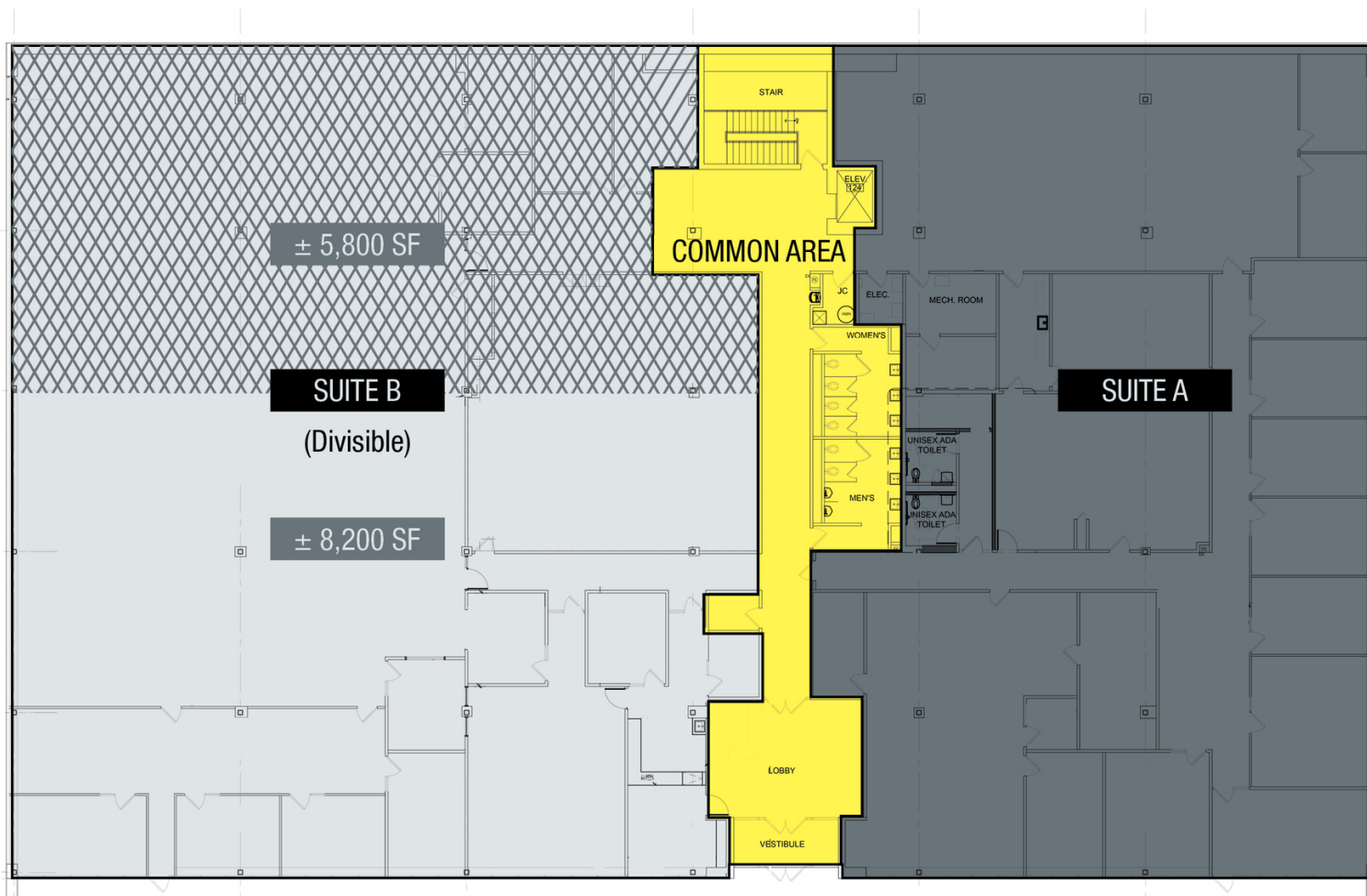
For More Information

Michael Adams

O: 610 871 1701
madams@naisummit.com

Sarah Finney Miller

O: 610 871 1719
sfinney@naisummit.com



Available Spaces

| Suite Name | Size (SF) | Lease Type | Lease Rate | Description |
|------------|-----------|------------|------------|-------------|
|------------|-----------|------------|------------|-------------|

| | | | | |
|---------|-------------------|-----|---------------|---|
| Suite A | 11,000 SF | NNN | \$10.00 SF/yr | Well-equipped for accounting or professional services, offering individual offices, conference, and training rooms |
| Suite B | 5,800 - 14,000 SF | NNN | \$10.00 SF/yr | Open layout and flexibility, ideal for use by physical therapy, behavioral health services, and other medical office users. Special exception uses include the following: non-profits, martial arts, or dance studios |



Main Entrance & Front Parking Lot



Suite A Office



Suite A Conference Room



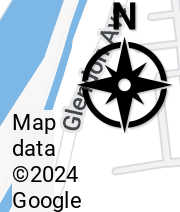
Suite B



Suite B



| Demographics | 1 Mile | 5 Miles | 10 Miles |
|-------------------|----------|----------|----------|
| Total population | 17,223 | 124,879 | 291,531 |
| Median age | 37.4 | 42.2 | 42.2 |
| Total households | 6,719 | 51,824 | 119,352 |
| Average HH income | \$68,473 | \$88,186 | \$89,324 |



We obtained the information above from sources we believe to be reliable. However, we have not verified its accuracy and make no guarantee, warranty or representation about it. It is submitted subject to the possibility of errors, omissions, change of price, rental or other conditions, prior sale, lease or financing, or withdrawal without notice. We include projections, opinions, assumptions or estimates for example only, and they may not represent current or future performance of the property. You and your tax and legal advisors should conduct your own investigation of the property and transaction.