



NEW CONSTRUCTION OFFICE FOR LEASE | COMING JULY 2026!

Orchard Park Office

1041 W CHINDEN BLVD | MERIDIAN, ID 83646

TOK
COMMERCIAL



KEKAULA KANIHO

208.947.0853

kekaula@tokcommercial.com

BRIANNA MILLER CCIM, CLS

208.761.9373

briannam@tokcommercial.com

JP GREEN, CCIM

208.947.0852

jpgreen@tokcommercial.com

Tenants can be open for business in 2026!

Prime opportunity to join Meridian's newest mixed-use development.

Join tenants Chipotle, Idaho Central Credit Union, Jacksons, Mo' Bettahs, Olive Garden, Tide Cleaners, Wendy's, Winco, Brookers Ice Cream, Floyds Barber, Sweet Escape and many more!

New Meridian Library at Orchard Park now open.

High visibility location with Chinden frontage!

T.I. allowance negotiable based on tenant and term.

SPACE	SIZE	RATE
Second Floor	2,660 SF	Contact Agent

PROP TYPE: Office

DELIVERY: July 1, 2026

LEASE TYPE: NNN

TI ALLOWANCE: Negotiable

SUBMARKET: North Meridian

EST. NNN: \$7.50/SF

TERM: 5+ years

CLASS: Class A-New Construction

CONTACT



HIGHLIGHTS



DETAILS



UPDATED: 12.5.2025

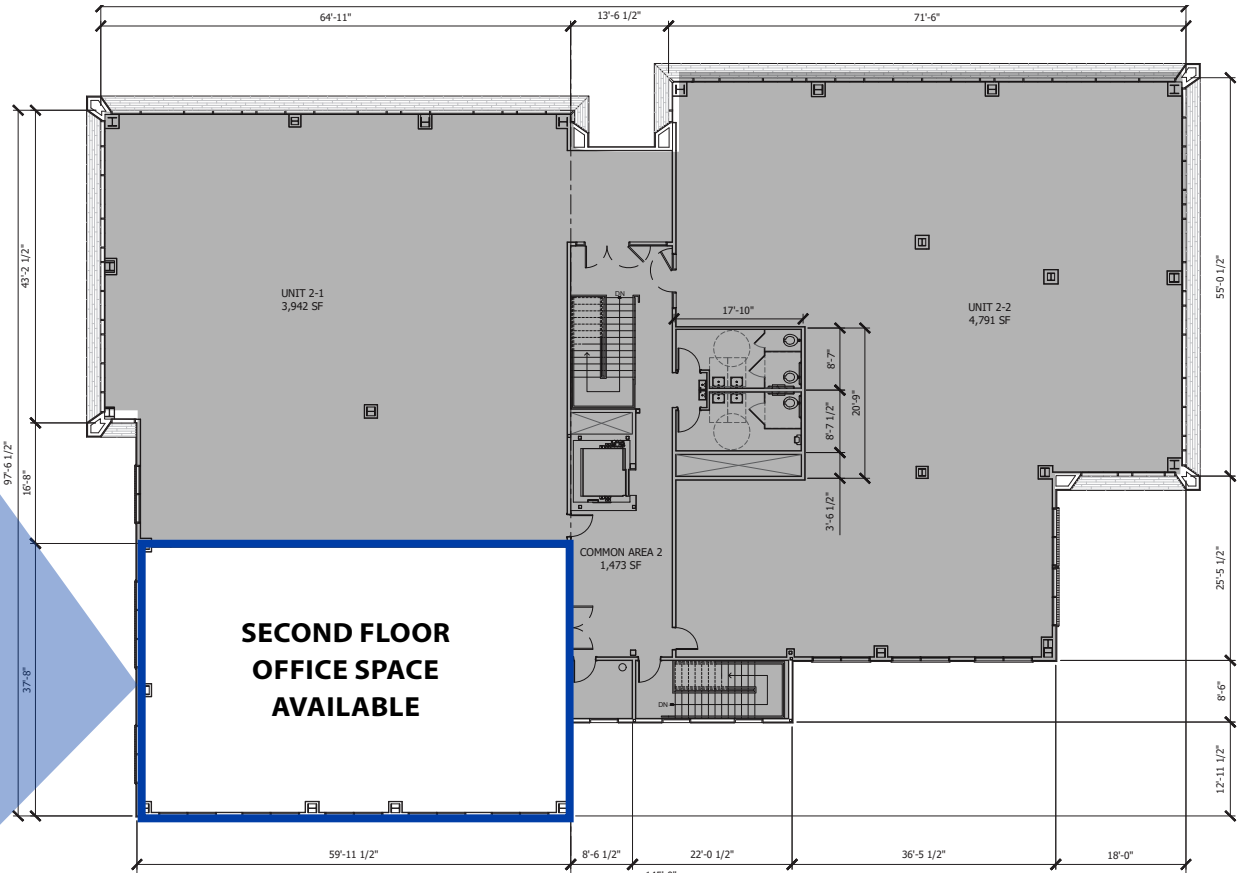
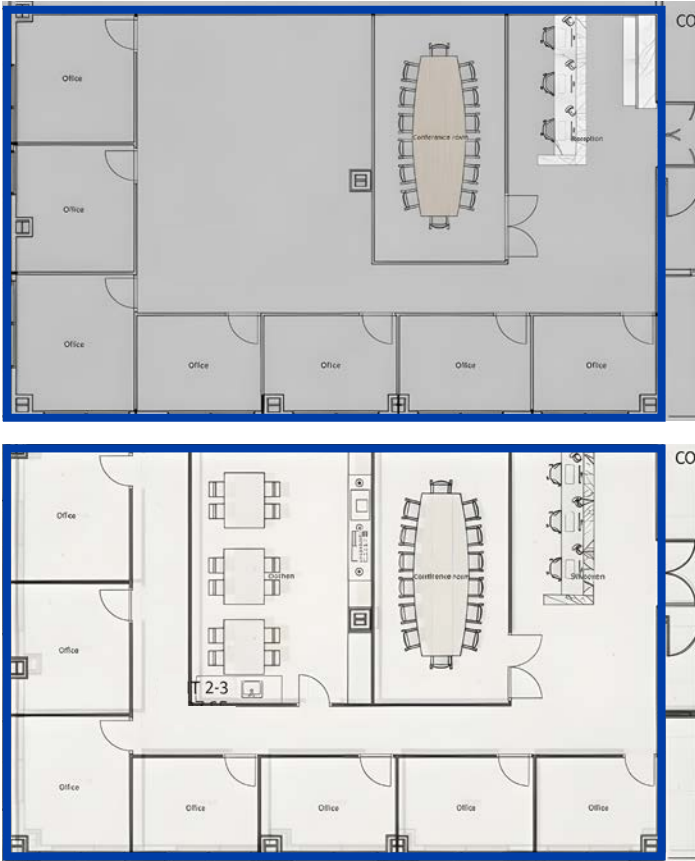
THIS PROPERTY IS EXCLUSIVELY MARKETING BY TOK BOISE LLC DBA TOK COMMERCIAL
This information was obtained from sources believed reliable but cannot be guaranteed. Any opinions or estimates are used for example only.

TOKCOMMERCIAL.COM

SECOND FLOOR OFFICE PLAN

SPACE	SIZE	RATE
Second Floor	2,660 SF	Contact Agent

OFFICE PLANNING CONCEPTS

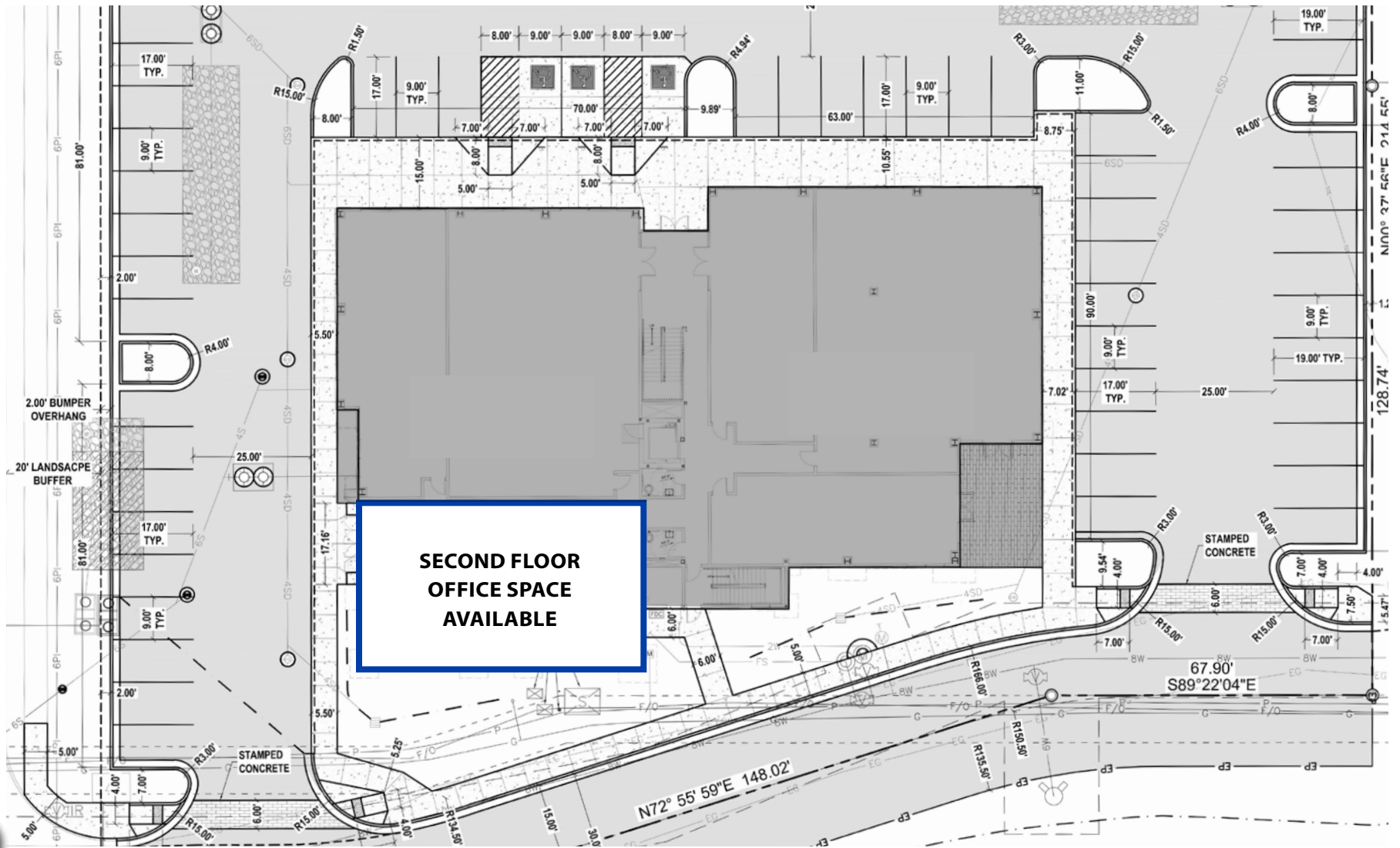


UPDATED: 12.5.2025

THIS PROPERTY IS EXCLUSIVELY MARKETING BY TOK BOISE LLC DBA TOK COMMERCIAL
This information was obtained from sources believed reliable but cannot be guaranteed. Any opinions or estimates are used for example only.

SITE PLAN

CHINDEN BLVD



UPDATED: 12.5.2025

THIS PROPERTY IS EXCLUSIVELY MARKETING BY TOK BOISE LLC DBA TOK COMMERCIAL

This information was obtained from sources believed reliable but cannot be guaranteed. Any opinions or estimates are used for example only.

SAGARRA TOWNHOMES
[147 UNITS]

THE LIBRARY PLAZA

THE WEST MARKET

COMING SOON

WYLDER

WinCo
FOODS

LINDER ROAD

46,326 VPD

THE COLLECTION

THE BARN [FUTURE]

Jacksons

CHINDEN BOULEVARD



ORCHARD PARK LOT 11

PLANNED MIXED-USE
[2026]



CLICK TO VIEW 360°
PANORAMIC AERIAL TOUR



UPDATED: 12.5.2025

THIS PROPERTY IS EXCLUSIVELY MARKETING BY TOK BOISE LLC DBA TOK COMMERCIAL
This information was obtained from sources believed reliable but cannot be guaranteed. Any opinions or estimates are used for example only.

TOKCOMMERCIAL.COM



ORCHARD PARK CO-TENANTS

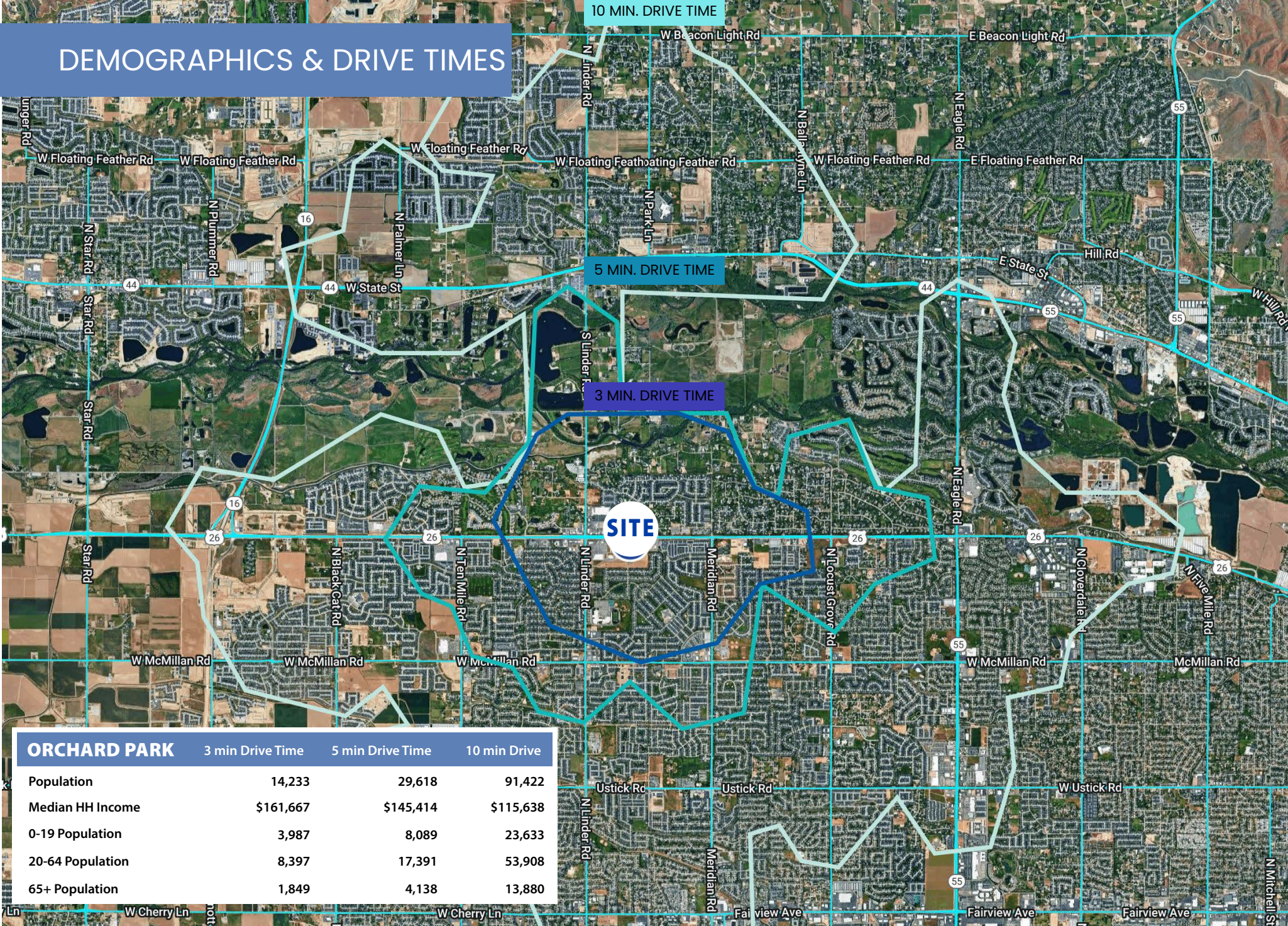


UPDATED: 12.5.2025

THIS PROPERTY IS EXCLUSIVELY MARKETING BY TOK BOISE LLC DBA TOK COMMERCIAL

This information was obtained from sources believed reliable but cannot be guaranteed. Any opinions or estimates are used for example only.

DEMOGRAPHICS & DRIVE TIMES



ORCHARD PARK

	3 min Drive Time	5 min Drive Time	10 min Drive
Population	14,233	29,618	91,422
Median HH Income	\$161,667	\$145,414	\$115,638
0-19 Population	3,987	8,089	23,633
20-64 Population	8,397	17,391	53,908
65+ Population	1,849	4,138	13,880

UPDATED: 12.5.2025

THIS PROPERTY IS EXCLUSIVELY MARKED BY TOK BOISE LLC DBA TOK COMMERCIAL

This information was obtained from sources believed reliable but cannot be guaranteed. Any opinions or estimates are used for example only.