

FOR SALE

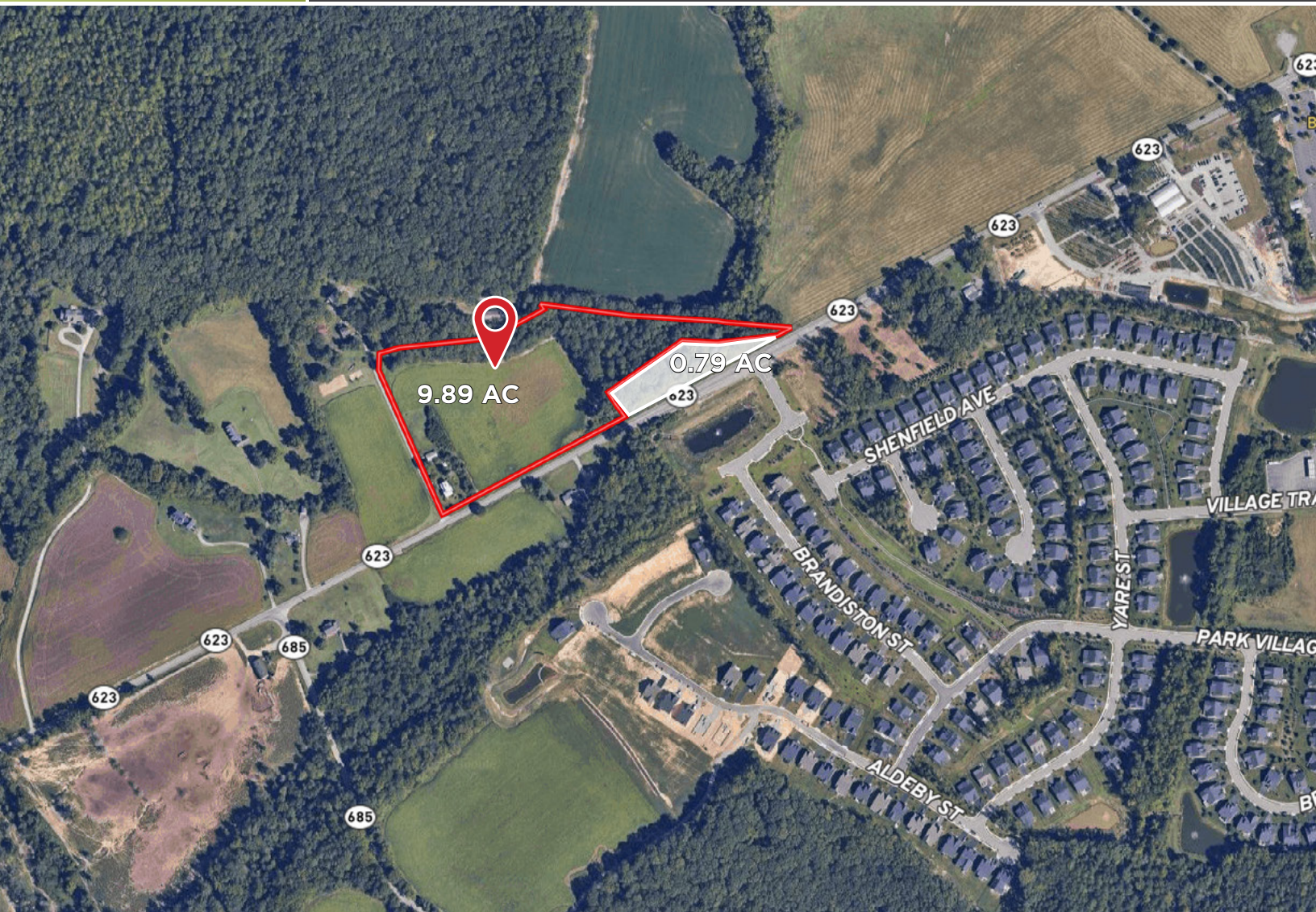
ZONED A-2

Industrial/Flex

2308 Ashland Road | Rockville, VA 23146



COMMONWEALTH
COMMERCIAL
Comprehensive Property Solutions



PROPERTY HIGHLIGHTS

- › 9.89± acres
- › Water at Ashland Road
- › Sewer is close by
- › Zoned A-2
- › Comprehensive plan - FLEXIBLE
- › Uses to include - light industrial, office / service, commercial
- › Sale Price: 9.89± AC - \$1,350,000
0.79± AC - Contact Agent

FOR MORE INFORMATION:

JOE BUHRMAN

Senior Vice President

804-433-1811

jbuhrman@commonwealthcommercial.com

BILL BARNETT

Senior Vice President | Partner

804-339-1100

bbarnett@commonwealthcommercial.com

Commonwealth Commercial Partners, LLC represents the Owner of this property. Information contained herein is deemed reliable but is not guaranteed.

9.89 ACRES

Light industrial, office/service, commercial

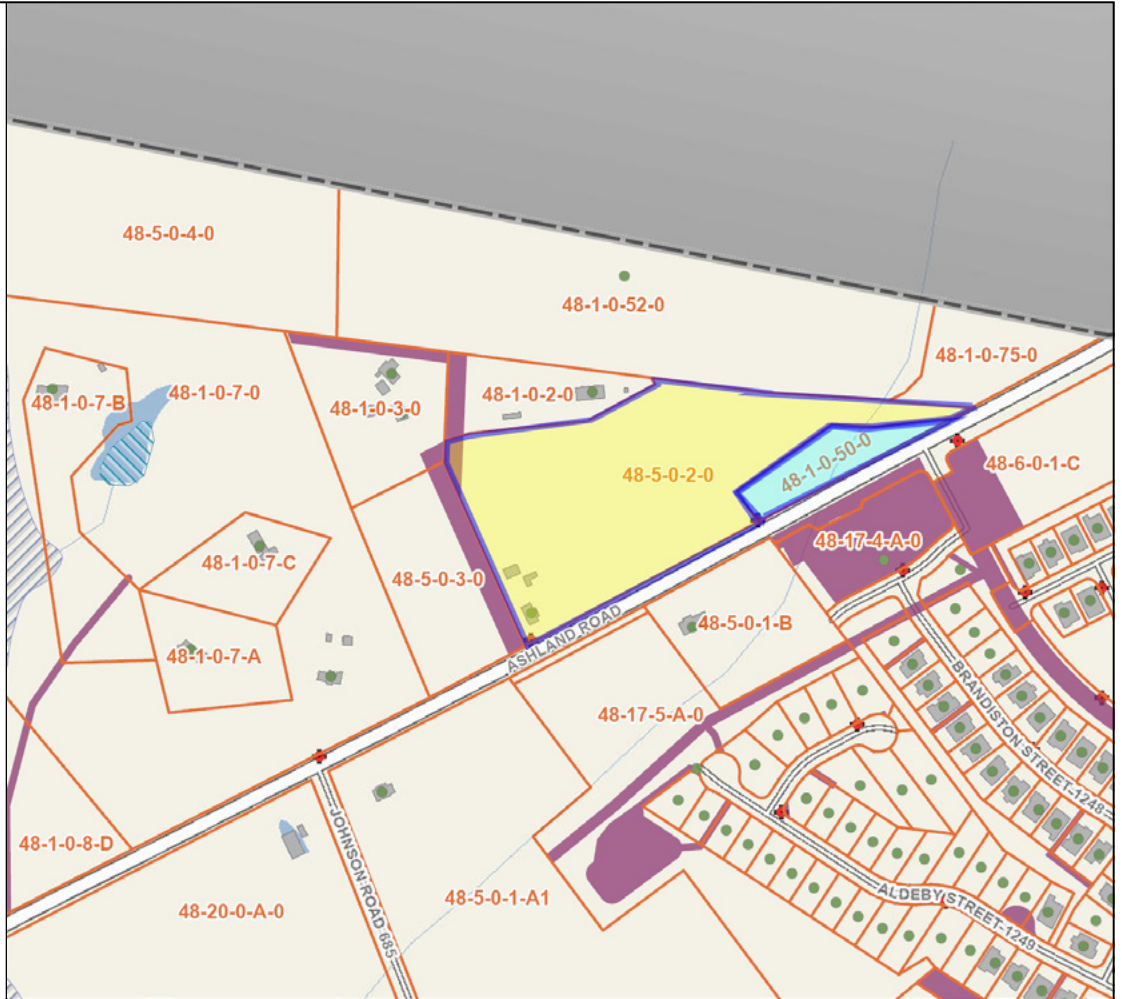
County of Goochland, Virginia

Legend

- Census Boundary
- Address Labels
- Address Points
- Structures
- Parcel Tax Map Labels
- Parcels
- Easements
- Wetland Areas
- FEMA 2008 Floodplain
- Wet Hydrants
- Road Labels



Feet
0 100 200 300 400
1:4,514 / 1"=376 Feet

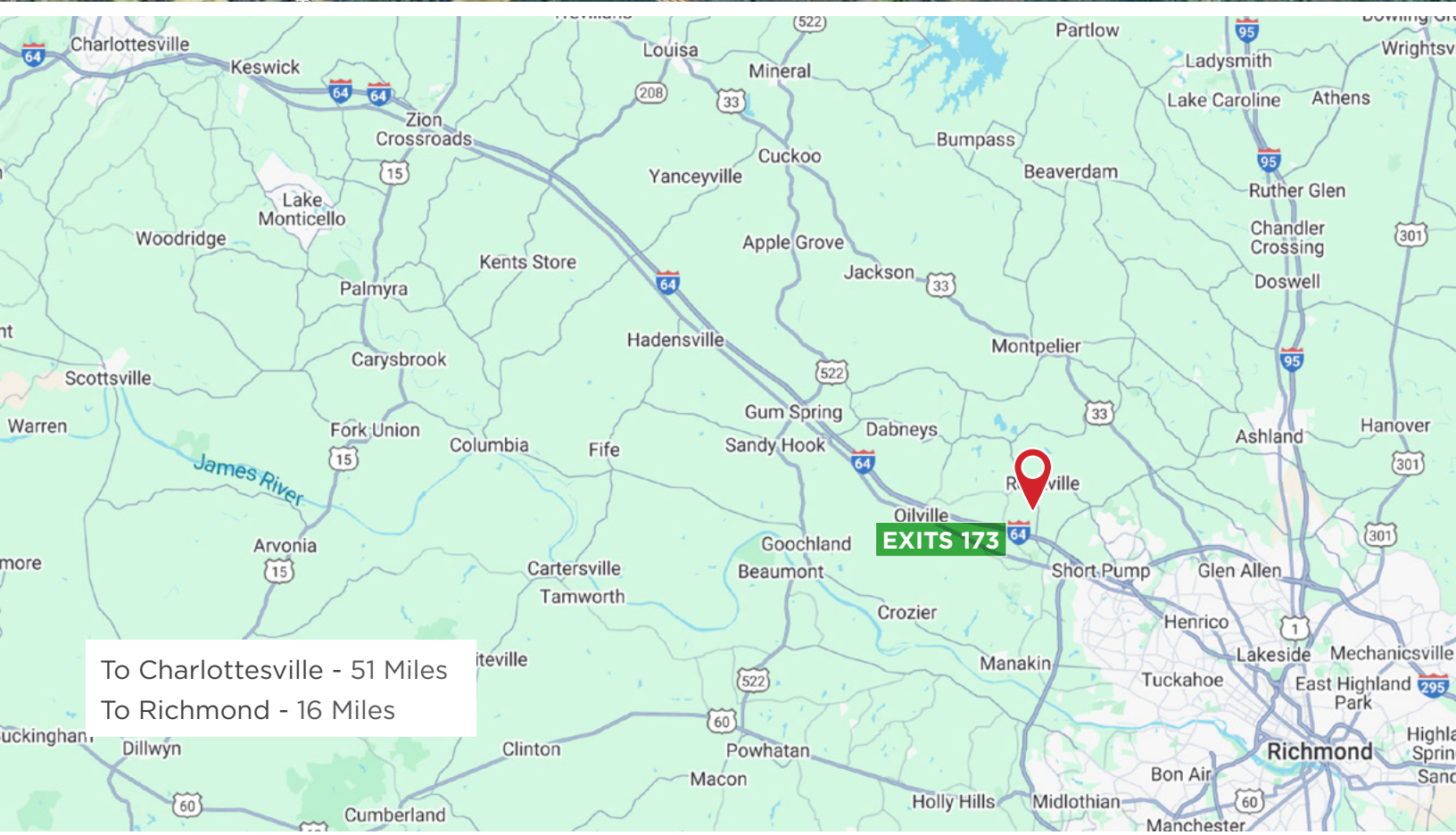
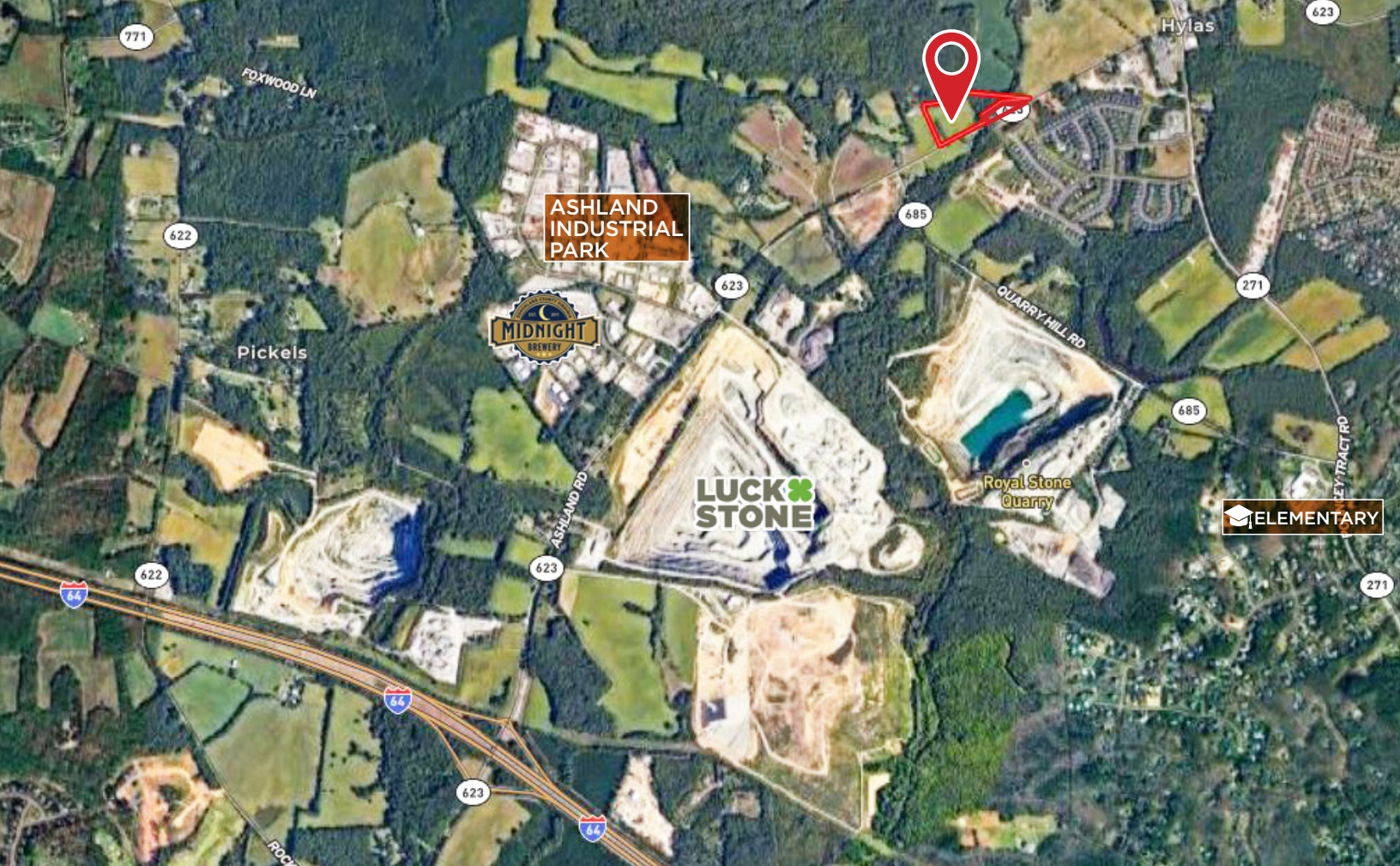


Title: Johnson and Nuckols parcels

Date: 7/21/2025

DISCLAIMER: This map depicts data derived from public records and presented "as is." It is not a legal representation of any feature depicted. Determinations of topography or contours, and depictions of physical improvements and property lines are for general information only and cannot be used for the design, modification, or construction of improvements to real property or for flood plain determinations. Goochland County disclaims all warranties, express or implied, including implied warranties of merchantability and fitness for a particular purpose. Goochland County assumes no responsibility or liability for any errors, omissions, or inaccuracies. Contact (804) 556-5832 with questions.





FOR SALE | 2308 ASHLAND ROAD | ROCKVILLE, VA 23146