



**MEDICAL ASSET
MANAGEMENT**
MEDICAL PROPERTY SPECIALISTS



St. Joseph Professional Building | 2031 Alameda Ave. | Burbank, CA
Medical Office Suites For Lease

Available Suites	Rentable SF	Rental Rates
Suite 200*	1,355 RSF	\$3.00 FSG
Suite 340*	900 RSF	\$3.50 FSG

*For Office Use Only

Features

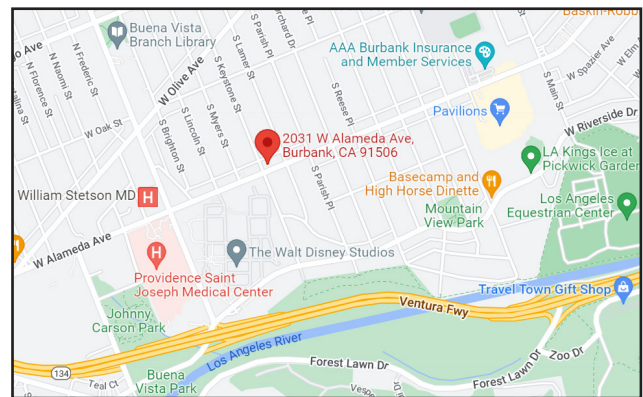
28,000 SF, 3 story professional medical office building

Located in the heart of Burbank

3 blocks from Providence St. Joseph Medical Center Campus

Convenient accessibility and close proximity to I-5, CA-134 and CA-170 Freeways

Parking \$95 per month/reserved



Contact

Brock Burnett
(818) 990-5200
brockb@medicalasset.com
DRE#: 01814211

Mitch Yankowitz
(310) 517-4861
mitchy@medicalasset.com
DRE#: 01360137

www.medicalasset.com
(310) 530-6060

South Bay
201 Continental Blvd., Ste. 210
El Segundo, CA 90245

Downtown Los Angeles
1400 S. Grand Ave., Ste. 808
Los Angeles, CA 90015

San Fernando Valley
5411 Eriwanda Ave., Ste. 208
Tarzana, CA 91356

Long Beach
1040 Elm Ave., Ste. 308
Long Beach, CA 90813



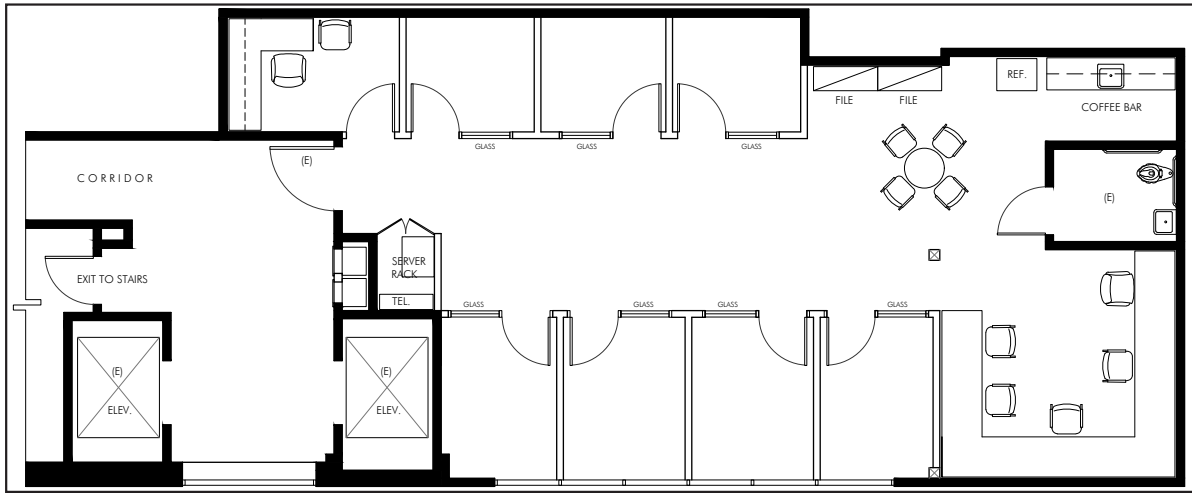
MEDICAL ASSET MANAGEMENT

MEDICAL PROPERTY SPECIALISTS

St. Joseph Professional Building | 2031 Alameda Ave. | Floor Plans

Suite 200

1,355 sq. ft.



Suite 340

900 sq. ft.

