

CHINA BASIN

Experience the Waterfront



NEWMARK

MC
Experience the Relationship
McCarthy • Cook

Discover China Basin

- Iconic 1 M SF waterfront Class A campus with the most expansive window line in San Francisco
- Flexible floor plates averaging 95,000 SF that are easily divisible
- Surrounded by paths, parks and open space along the water

STATE OF THE ART AMENITIES COMING SUMMER 2026!

- Waterfront space to meet, relax, or entertain
- Full-service restaurant, bar and grab and go
- Flexible meeting areas, open workspace and game room
- Fitness center with luxury showers and lockers



New Amenities



Elevate Wellness



Collaborate & Connect











Flexible Meeting Spaces

Amenity Rich Neighborhood

China Basin is surrounded by world class dining, retail, and entertainment venues.



-  DESSERT
-  HOTELS
-  RESTAURANT
-  BARS/COCKTAILS
-  FITNESS
-  ENTERTAINMENT
-  COFFEE/CAFÉ
-  GROCERY STORES

RESTAURANT

- | | | |
|-------------------------|-----------------------|--------------------------|
| Bagel Bakery Cafe | ROOH SF | Flour + Water Pizza Shop |
| Cafe Okawari | Saison | Via Aurelia |
| Che Fico | SAJJ Mediterranean | Casey's Pizza |
| Earl of Sandwich | Spark Social SF | ROOFTOP 25 |
| House of Tadu | STEM Kitchen + Garden | KAIYŌ Restaurant |
| Ike's Love & Sandwiches | Sun and Moon | Taksim |
| Marlowe | Sweetgreen | Brickhouse Cafe & Bar |
| Merkado | Taco Bell Cantina | Little Skillet |
| Mission Rock Resort | The Ramp | Quê Việt |
| Momo's | Town's End Brunch | Via Aurelia |
| Cafe Réveille | Underdogs Cantina | Quick Dog |
| Proper Food | Happy King Pizza | |
| Public House | Miller & Lux | |

COFFEE/CAFÉ

- | | | |
|--------------------|------------------|----------------------|
| Arsicault Bakery | Joe & The Juice | TWYNE |
| Blue Bottle Coffee | Latte Express | Flour & Branch |
| Bravado | Philz Coffee | Tazza D'Amore Café |
| Cafe Reveille | South Beach Cafe | Cafe Buenos Aires SF |
| Happy Lemon | Starbucks | Golden Goat Coffee |

FITNESS

- Bakar Fitness & Rec Center UCSF
- CorePower Yoga
- Flagship SOMA
- Lagree Fit 415
- Lux Fit
- Orangetheory Fitness
- PowerPlay SF
- United Barbell CrossFit SOMA
- Solidcore Mission Bay

BARS/COCKTAILS

- ATwater Tavern
- Bar VIA
- Cavana
- District San Francisco
- Harmonic Brewing
- Local Tap
- Trevino Wine Bar
- 21st Amendment Brewery & Restaurant

DESSERT

- Somisomi
- Insomnia Cookies

HOTELS

- Hotel VIA
- LUMA Hotel
- Hyatt Place

ENTERTAINMENT

- Chase Center
- Lucky Strike
- Oracle Park
- Stagecoach Greens

GROCERY STORES

- Safeway
- Gus's Community Market Cafe

Transportation Ease at its Finest

- Adjacent to MUNI/Central Subway
- 1 Block to CalTrain
- 7 Minutes to BART
- 2 Blocks to 280/101 and 5 Blocks to 80



Caltrain
2 min walk



MUNI-N
1 min walk



MUNI-T
1 min walk



BART
7 min via MUNI-T
Central Subway



Ferry
14 min via MUNI-N
N Judah



UCSF Shuttle
On-Call Available



HWY 80
5 min drive



HWY 280
4 min drive



SFO
20 min drive



Availabilities

WHARFSIDE BUILDING

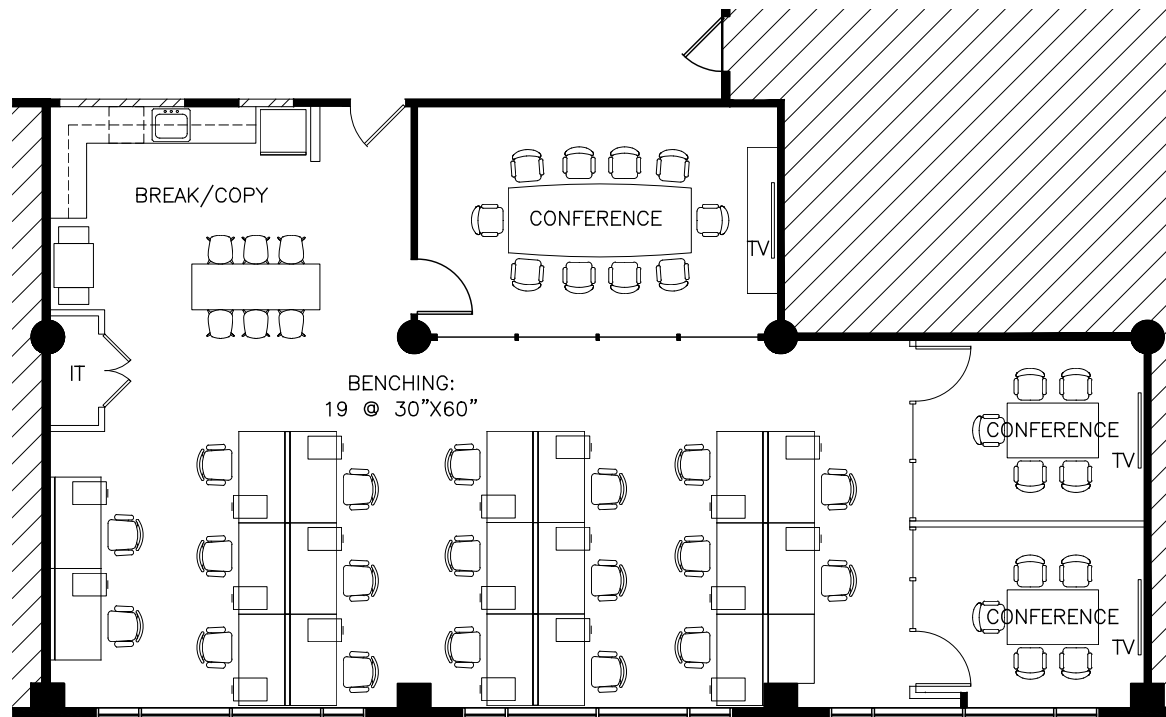
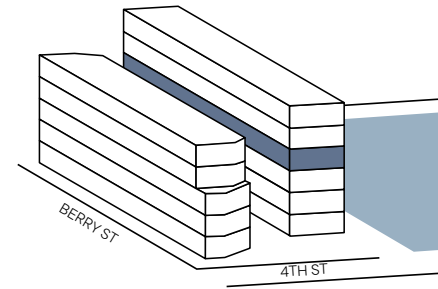
Suite	Size (SF)	Available	Floorplan	Comments
4815	2,254	9/1/26	4815	Spec suite, 3 conference rooms, open seating ±20 workstations, kitchenette, high ceilings, courtyard view.
4805	2,157	8/1/26	4805	Spec suite, 1 conference room, 2 offices, open seating ±8 workstations, kitchenette, courtyard view.
1600	28,603	Now	1600	"Plug and Play" creative suite with water views and direct access to waterfront promenade next to Amenity Center. Sliding glass door provides indoor/outdoor experience.

BERRY STREET BUILDING

Suite	Size (SF)	Available	Floorplan	Comments
300	50,093	Now	300	Ready for improvements. High ceilings, divisible.
200	37,312	7/1/26	200	Up to 87,405 RSF contiguous in the Berry Building.

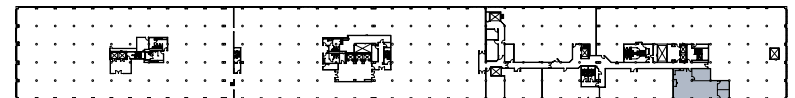
Suite 4815 | 2,254 SF

- Spec suite
- 3 conference rooms
- Open seating for ±20 workstations
- Kitchenette
- High ceilings
- Courtyard view
- Available 9/1/26



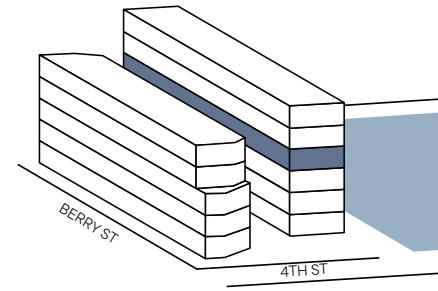
COURTYARD

KEYPLAN

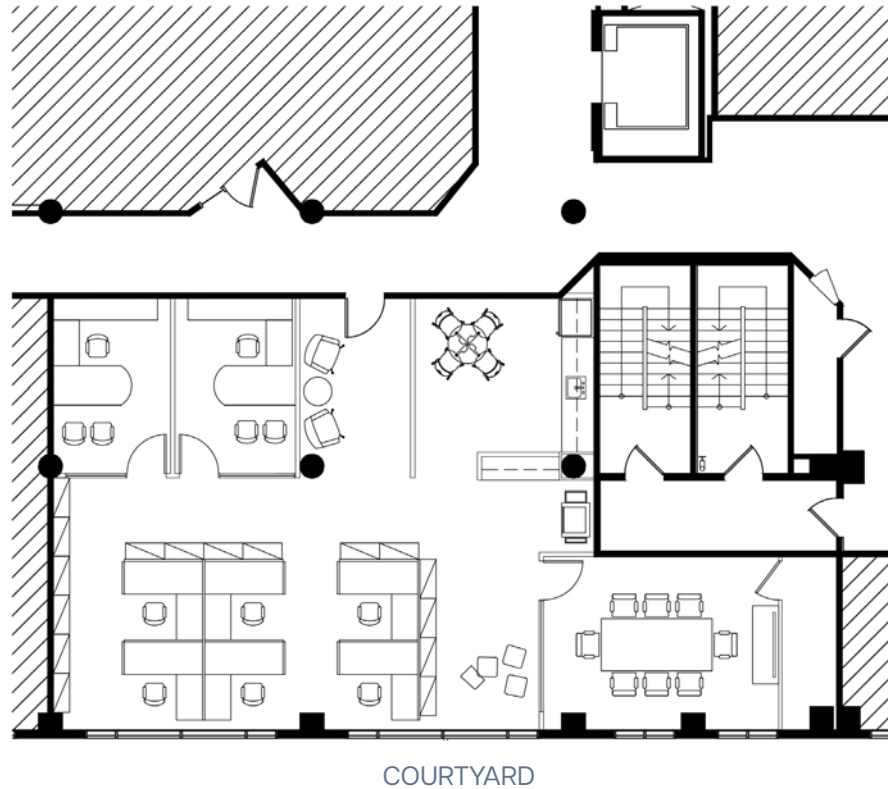


Availabilities

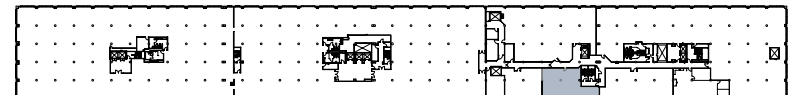
Suite 4805 | 2,157 SF



- Spec suite
- 1 conference room
- 2 private offices
- Open seating for ±8 workstations
- Kitchenette
- High Ceilings
- Courtyard View
- Available 8/1/26



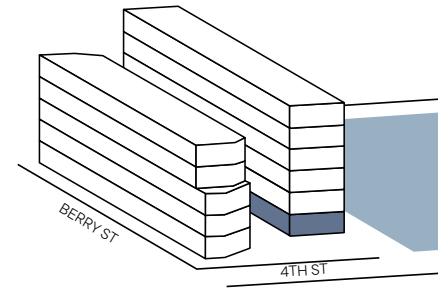
KEYPLAN



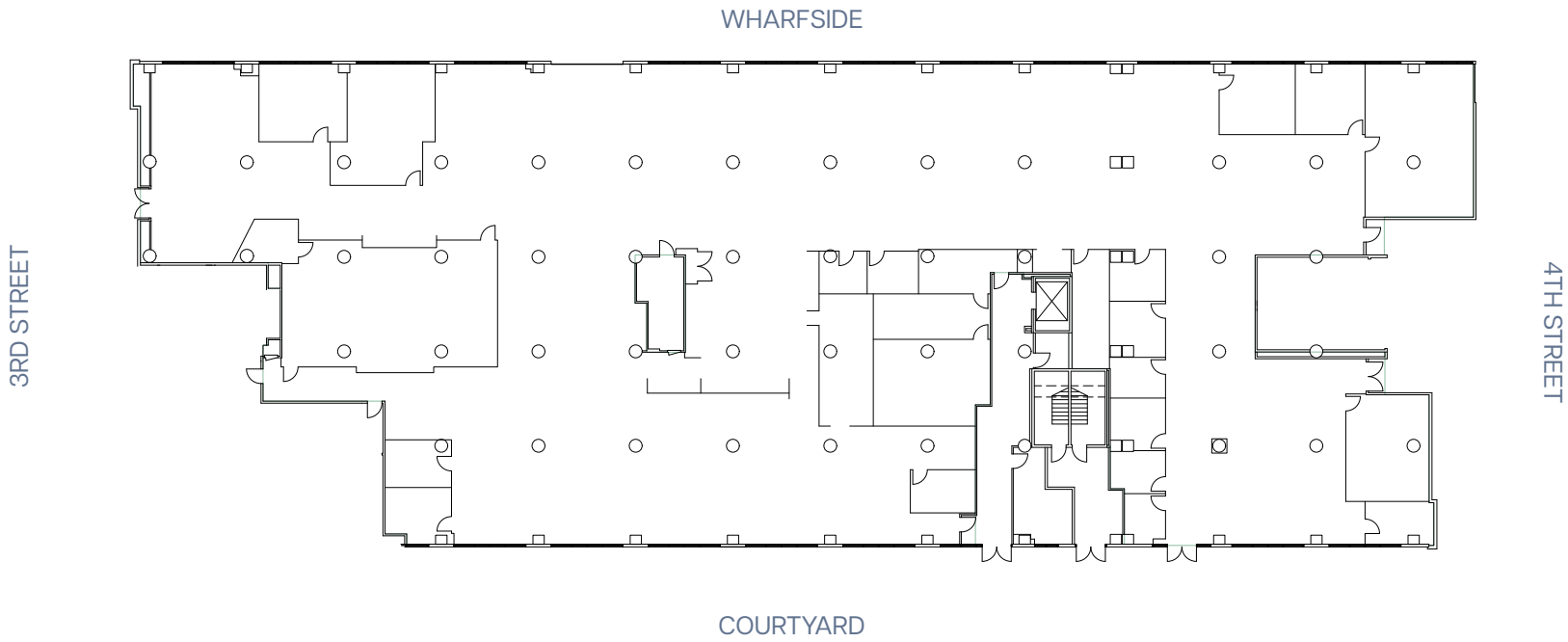
Availabilities

WHARFSIDE

Suite 1600 | 28,603 SF



- Plug and Play
- Creative suite
- Incredible water views
- Potential for outdoor terrace
- Lobby & restroom access on two sides
- Recent market ready work completed



KEYPLAN

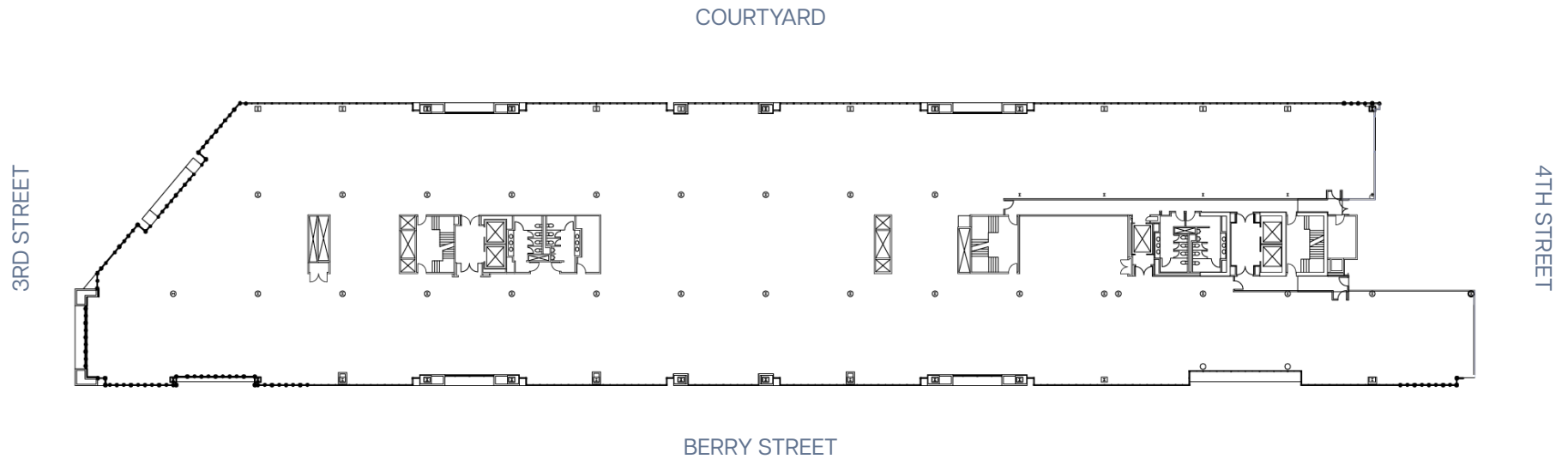
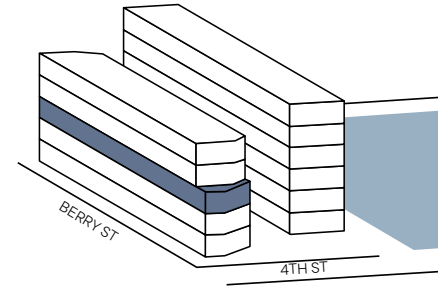


Availabilities

BERRY STREET

Suite 300 | 50,093 SF (Divisible)

- Shell condition
- Divisible
- High ceilings
- Available now



KEYPLAN

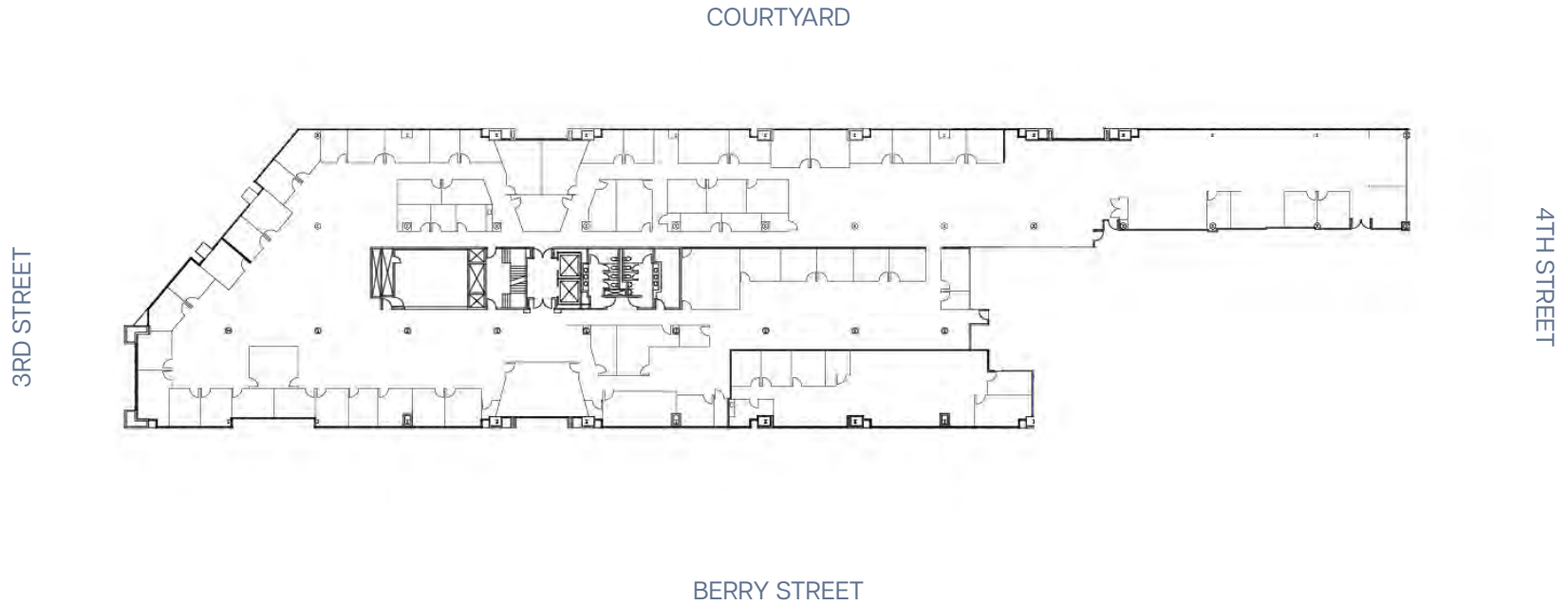
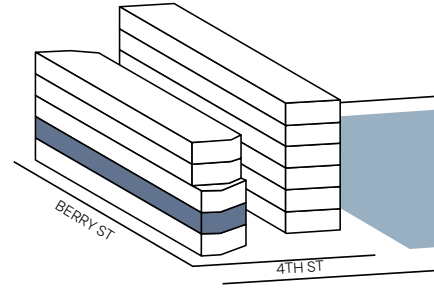


Availabilities

BERRY STREET

Suite 200 | 37,312 SF

- Available 7/1/26



KEYPLAN



Availabilities

CHINA BASIN



MC⁺

Experience the Relationship
MCCARTHY • COOK

NEWMARK

Cassidy Zerrer

Senior Managing Director
415.283.9910
cassidy.zerrer@nmrk.com
CA RE LIC #01779321

Karl Baldauf

Executive Managing Director
415.445.5117
karl.baldauf@nmrk.com
CA RE LIC #00960724

Maurice Spikes

Senior Managing Director
510.356.8492
maurice.spikes@nmrk.com
CA RE LIC #02001506

Richard Hayes

Vice President, Leasing
415.993.5778
rbh@mccarthycook.com
CA RE LIC #01055368

ONE SANSOME ST, FLOOR 41, SAN FRANCISCO, CA 94104

The distributor of this communication is performing acts for which a real estate license is required. The information contained herein has been obtained from sources deemed reliable but has not been verified and no guarantee, warranty or representation, either express or implied, is made with respect to such information. Terms of sale or lease and availability are subject to change or withdrawal without notice.