

For Sublease

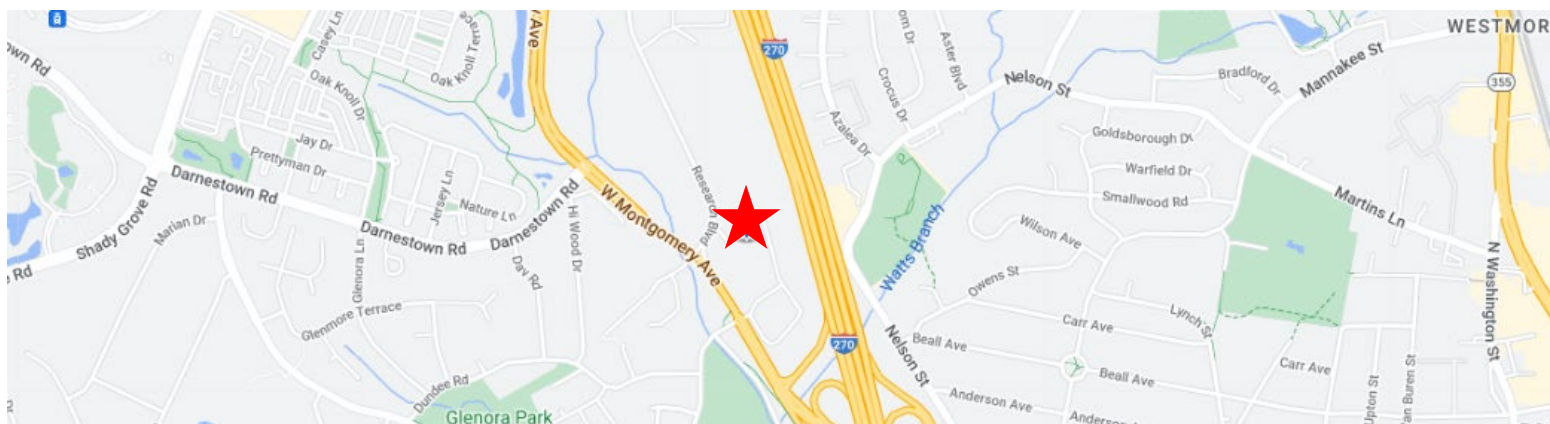
Existing GMP and Lab Opportunity

1405 Research Blvd
Rockville, MD

Highlights

- 47,180 SF Total: (1st, 2nd, and 3rd floors) of manufacturing, lab, storage, and office*
- Available: Immediately
- Term: Through December 1, 2032
- Asking rent: Negotiable

*Equipment list and utility information available upon request



Alden Stabb

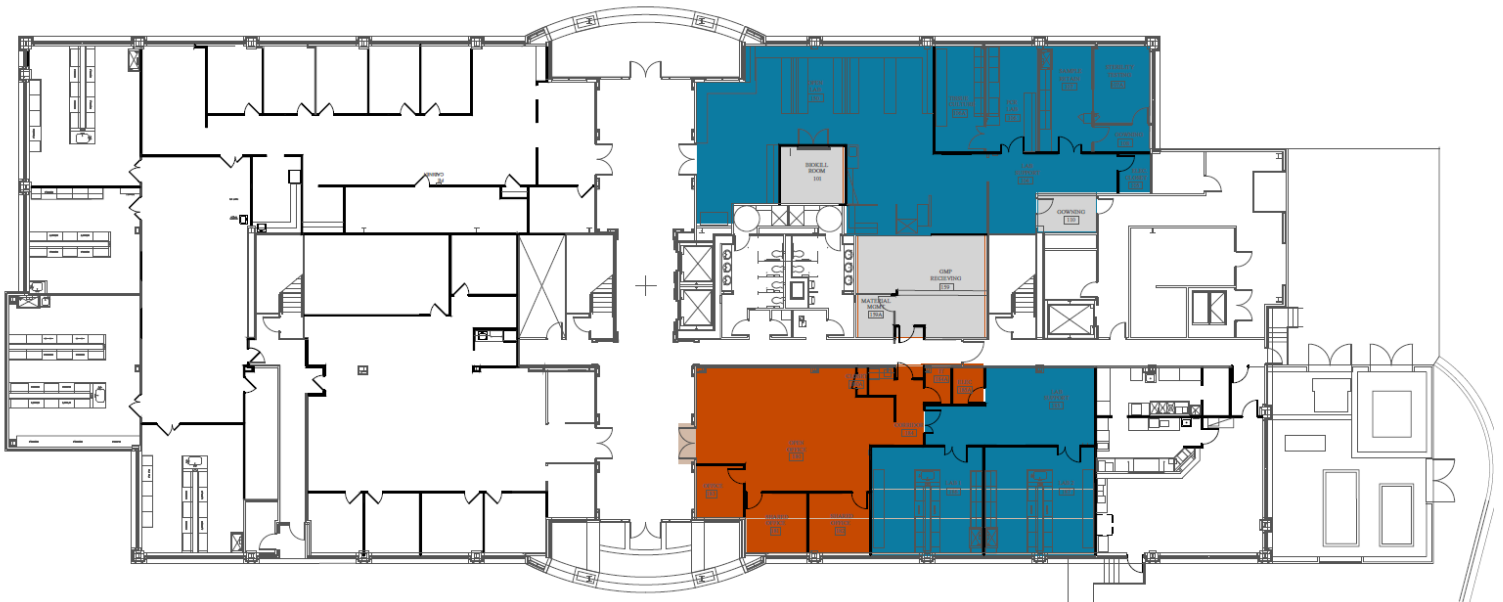
+1 301 325 3241

alden.stabb@jll.com




jll.com

First Floor

Floor Plan



LEGEND:

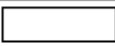





	R&D Wet Lab
	GMP Support + Shipping and Receiving
	Administrative Space

First Floor
7,610 RSF

Second Floor

Floor Plan

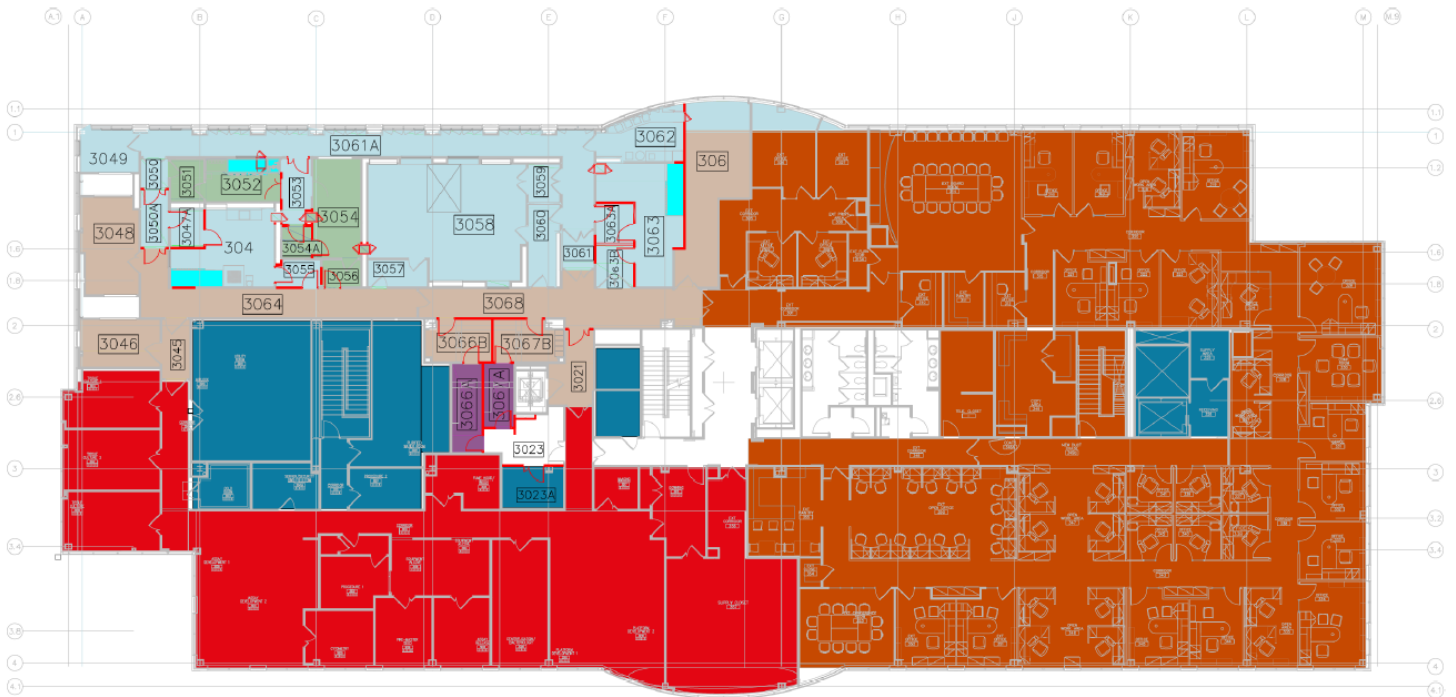


LEGEND:	
	NC
	Grade CNC
	Grade D
	Grade C
	Grade B
	LAF - grade A air supply

Second Floor
13,848 RSF

Third Floor

Floor Plan



LEGEND:	
	NC
	Grade CNC
	Grade D
	Grade C
	Grade B
	Containment system - grade A
	Administrative Space
	Production Development
	Logistic/Technical

Third Floor
25,722 RSF