

For Lease

Plumas Commons



1895 Plumas St.
Reno, NV 89509

Michael Keating, SIOR
Partner
775.386.9727
mkeating@logicCRE.com
S.0174942

Michael Dorn
Senior Associate
775.453.4436
mdorn@logicCRE.com
S.0189635

Listing Snapshot



\$2.10 - \$2.15
Lease Rate



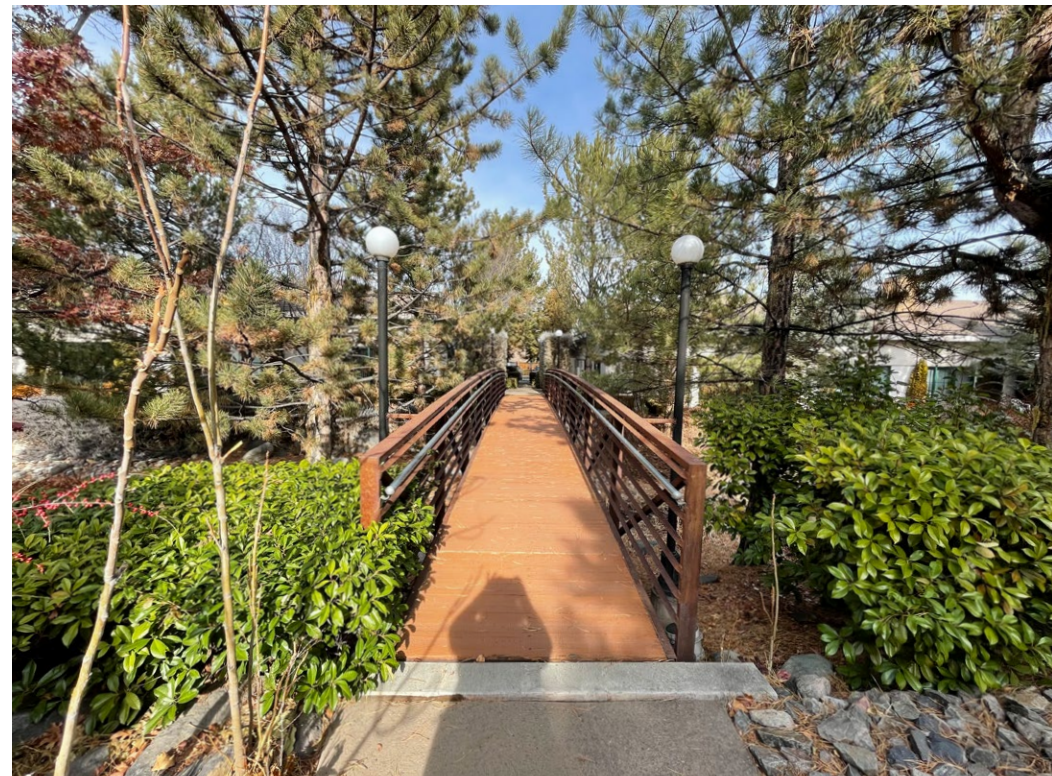
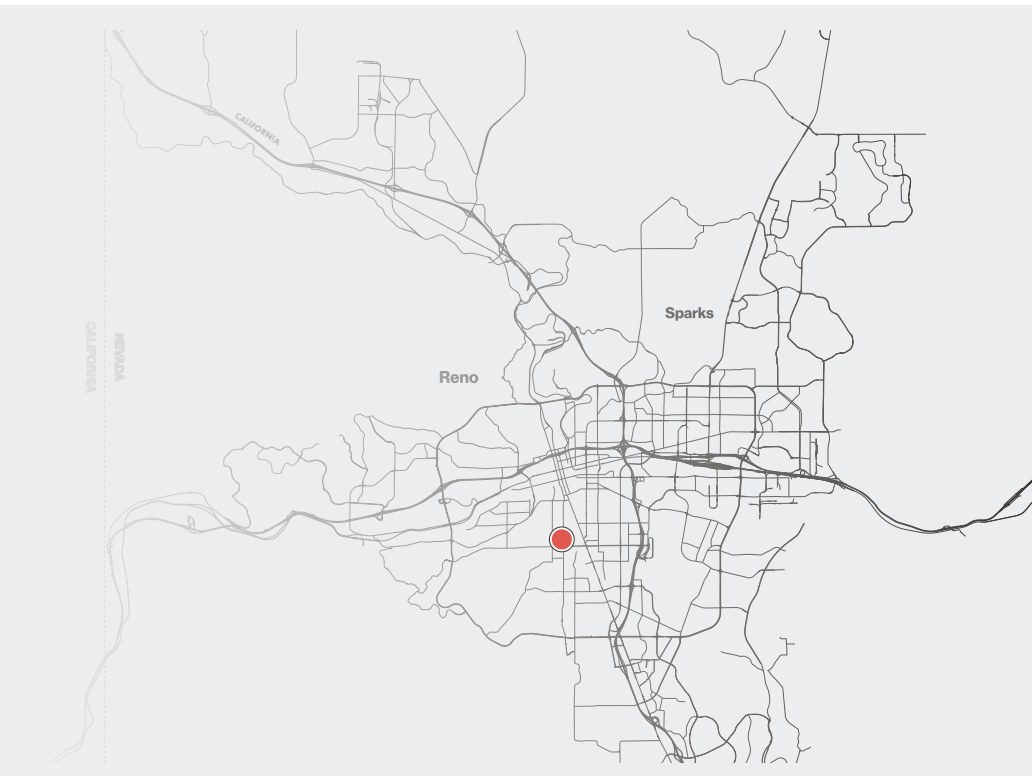
± 1,520 - 1,540 SF
Available Square Footage



\$0.42 NNN
Estimated Lease Expense

Property Highlights

- Property is located in central Reno with nearby access to MidTown and Downtown districts
- Situated on the corner of Plumas St. and Plumb Ln. with a combined ± 33,700 CPD
- Turn-key office suites with multiple sizes and configurations available
- 4.67 per 1,000 parking ratio
- Large central courtyard with multiple seating areas

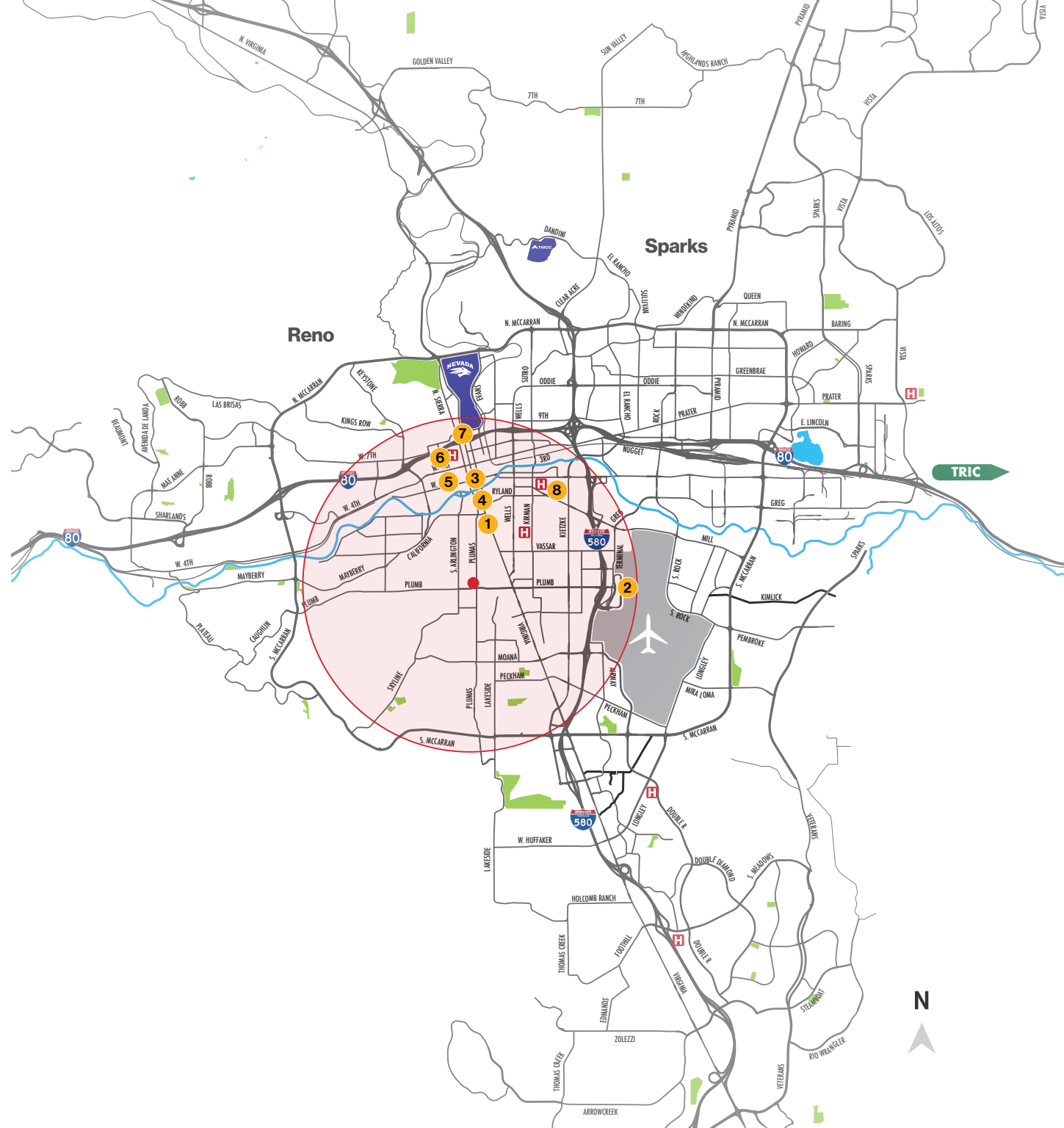


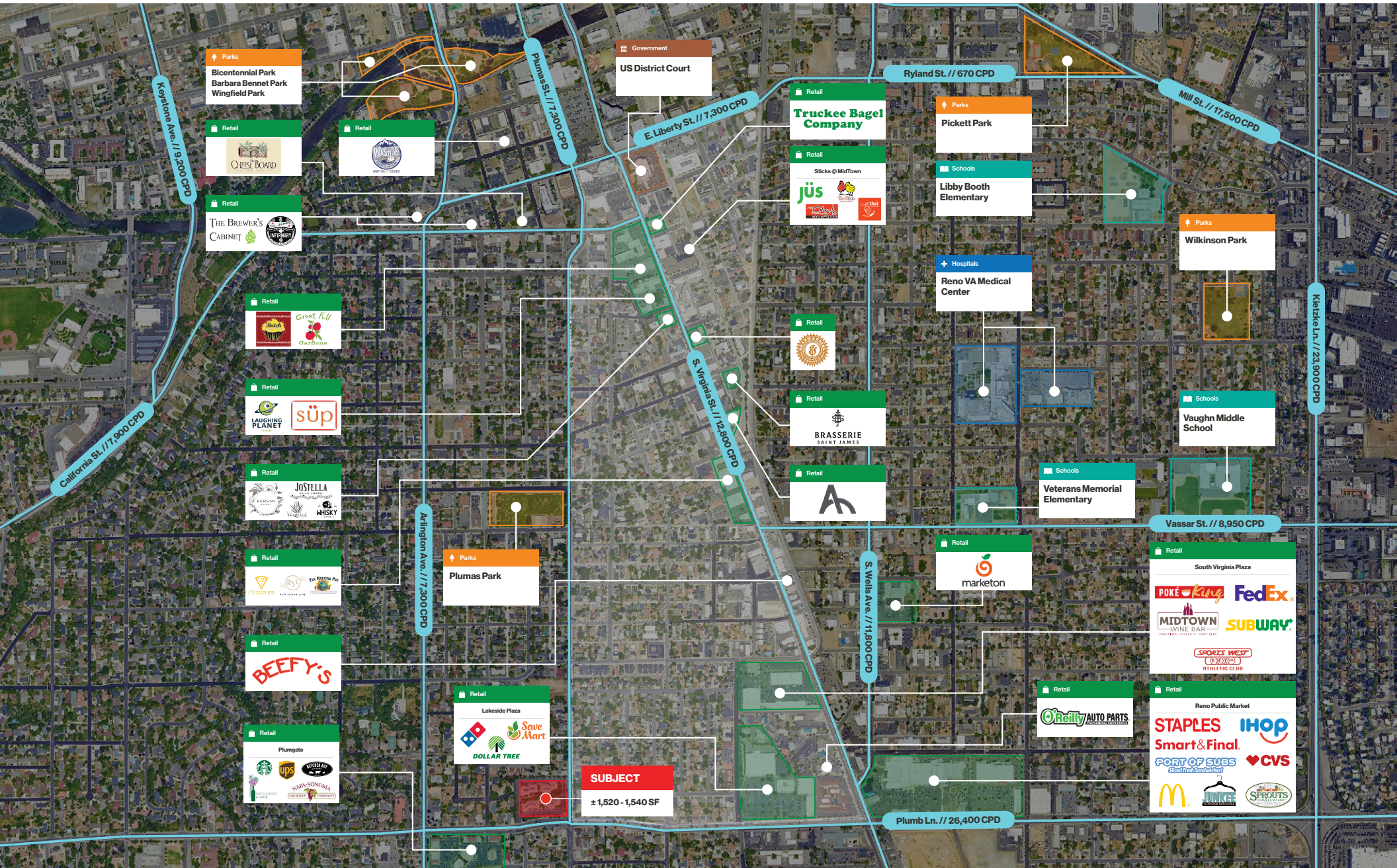
Vicinity Map

Plumas Commons is situated in central Reno with nearby access to downtown, MidTown, major highways, Renown Regional Medical Center, and the new Reno Experience District. Dense housing nearby provides strong income demographics in the surrounding region.

Amenities within a 3-mile radius


- 1
MidTown
 - 0.8 miles
- 2
Reno-Tahoe International Airport
 - 1.2 miles
- 3
City of Reno Municipal Court
 - 1.4 miles
- 4
Reno City Hall
 - 1.5 miles
- 5
Downtown Reno
 - 1.8 miles
- 6
Saint Mary's Regional Medical Center
 - 2.0 miles
- 7
University of Nevada, Reno
 - 2.2 miles
- 8
Renown Regional Medical Center
 - 2.3 miles







 Government
City of Reno Municipal Court

 Hospitals
Renown Regional Medical Center

Downtown Reno

Midtown

Lander St.

SUBJECT
± 1,520 - 1,540 SF

Plumas St. // 7,300 CPD

Plumb Ln. // 26,400 CPD

Site Plan

Available Leased



Floor Plan

Building 1875 | Suite 4



\$2.15 PSF

Lease Rate

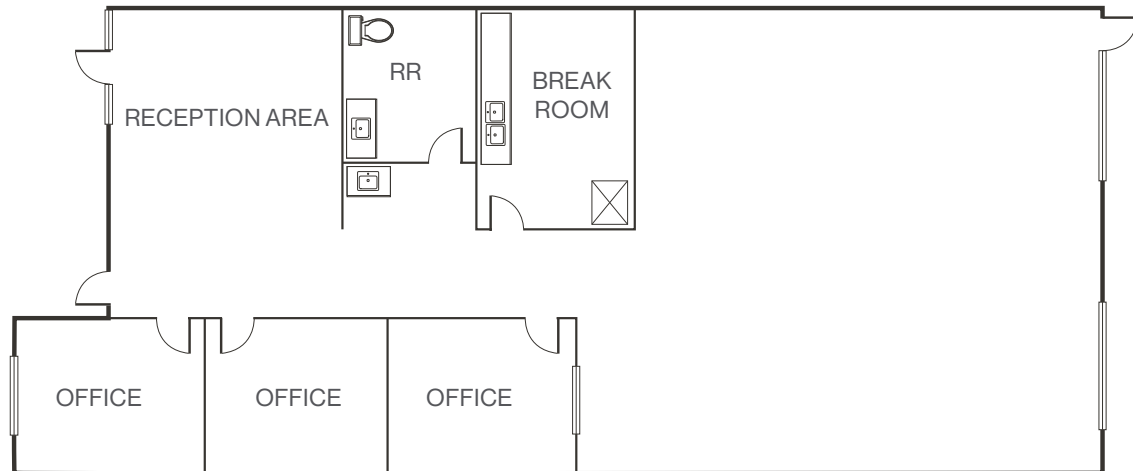


± 1,520 SF

Available Square Footage

- Reception area
- Three (3) private offices
- Break room with laundry
- Private restroom

[Click for a Virtual Tour](#) 



Floor Plan

Building 1895 | Suite 3



\$2.10 PSF

Lease Rate

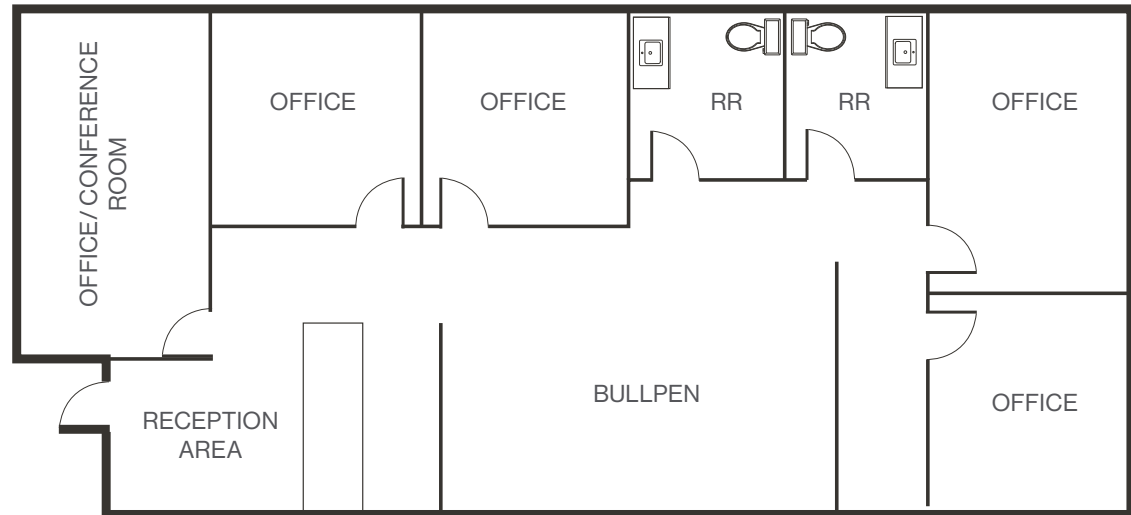


± 1,540 SF

Available Square Footage

- Four (4) private offices
- Two (2) private restrooms
- Conference room
- Open reception

[Click for a Virtual Tour](#) 



Property Photos



LOGIC Commercial Real Estate

Specializing in Brokerage and Receivership Services



Join our email list and
connect with us on LinkedIn

The information herein was obtained from sources deemed reliable; however LOGIC Commercial Real Estate makes no guarantees, warranties or representation as to the completeness or accuracy thereof.

For inquiries please reach out to our team.

Michael Keating, SIOR

Partner
775.386.9727
mkeating@logicCRE.com
S.0174942

Michael Dorn

Senior Associate
775.453.4436
mdorn@logicCRE.com
S.0189635