

SANTA FE BUSINESS CENTER

175 Bosstick Blvd & 2910, 2920, & 2930 Norman Strasse Rd
San Marcos, CA 92069



FOR LEASE
INDUSTRIAL BUSINESS PARK



PROPERTY HIGHLIGHTS



SANTA FE BUSINESS CENTER



Four Industrial Manufacturing Buildings



Minimal Office Build out with Restrooms in Each Suite



Grade Level Roll-Up Loading Doors



Parking Ratio 2.0 / 1,000 SF



Convenient Access to Highway 78



Built in 1990



Zoning IP; San Marcos



Available Suite Size 780 SF

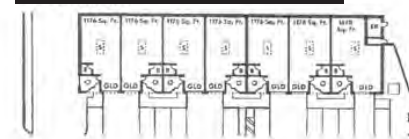
AVAILABILITIES

CURRENT AVAILABILITIES

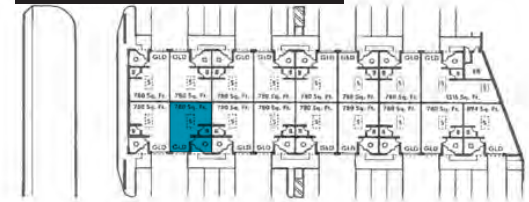
UNIT	SIZE	DESCRIPTION	LEASE RATE	AVAILABLE
2930 Norman Strasse Rd / 104	780 SF	Office, Restroom, and Warehouse	\$1.70 / SF + \$0.20 CAM	Now



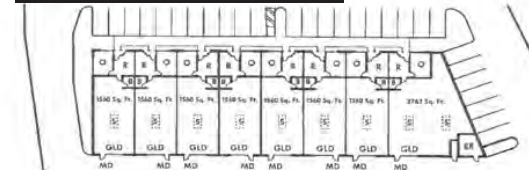
175 Bosstick Blvd



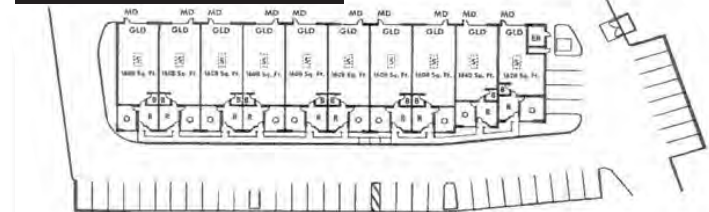
2930 Norman Strasse Rd



2920 Norman Strasse Rd



2910 Norman Strasse Rd



2930 NORMAN STRASSE

104

SUITES AVAILABLE

780

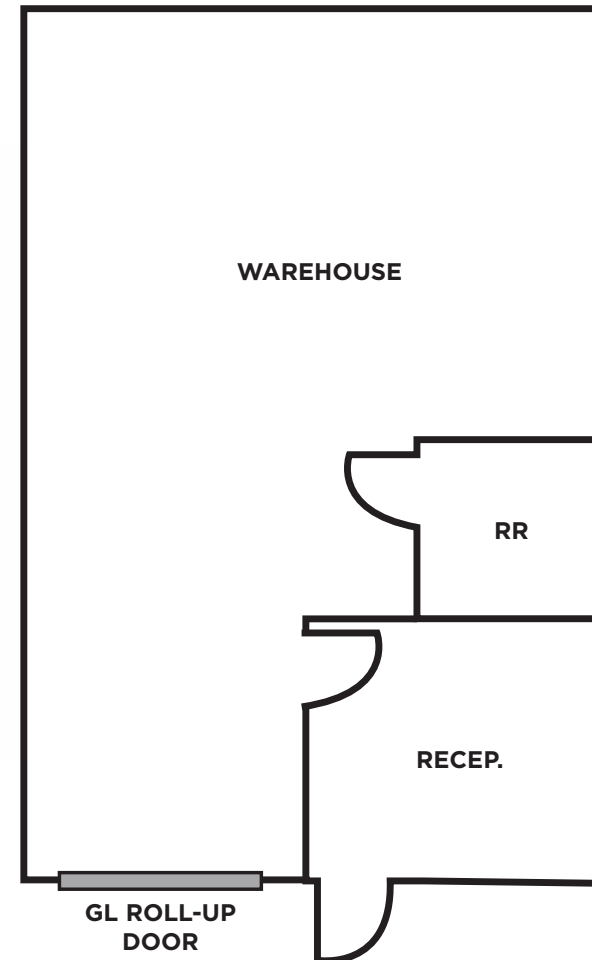
TOTAL SQUARE FEET

\$1.70 / SF

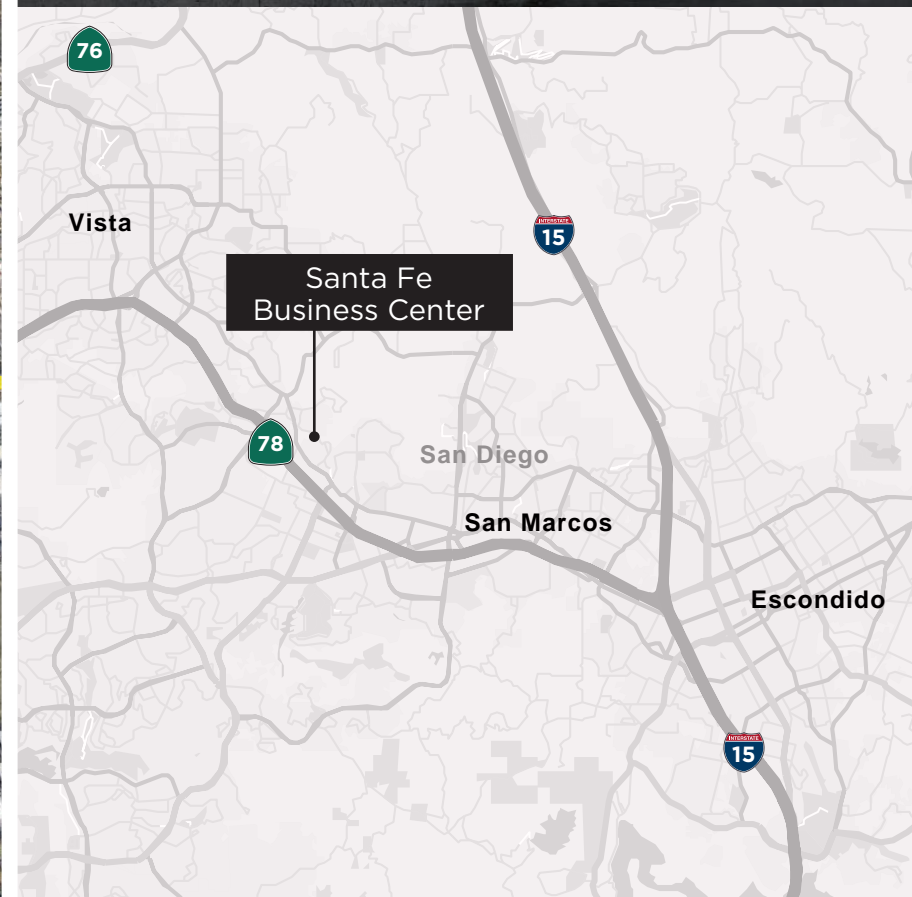
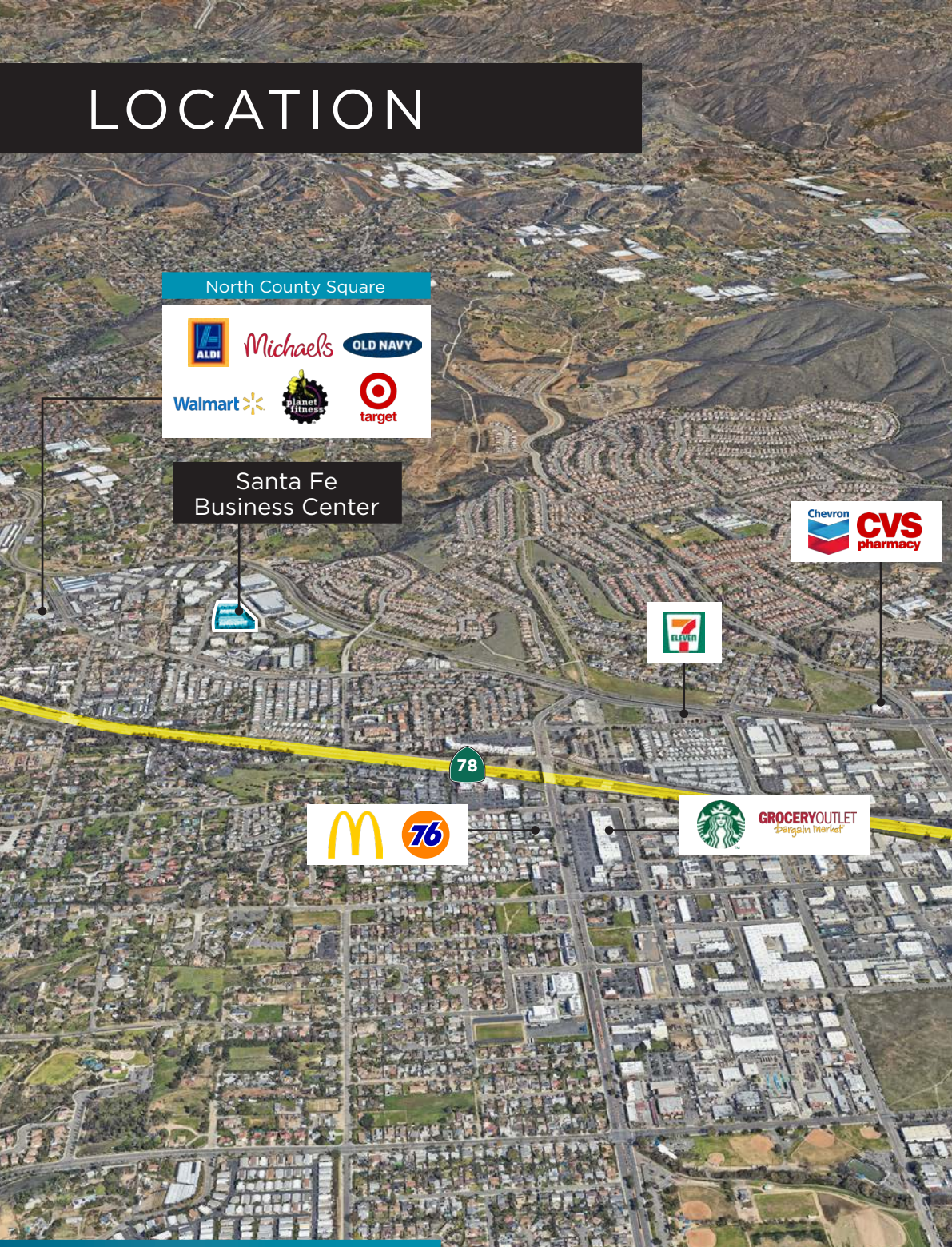
LEASE RATE + \$0.20 CAM

Now

DATE AVAILABLE



LOCATION



**JOE CROTTY**

760.473.1811

joe.crotty@cushwake.com
Lic. No.01369821**CONOR BOYLE**

760.458.5739

conor.boyle@cushwake.com
Lic. No.01813305**TYLER STEMLEY**

760.908.4270

tyler.stemley@cushwake.com
Lic. No.02003867**CARSON ODABASHIAN**

760.431.3836

carson.odabashian@cushwake.com
Lic. No.02207230