

# For Sale / 6.494± Acres

**6.494± Acres – 540± F.F.**

**Adjacent to S/E Corner Of Intersection Of LaFayette Parkway and Callaway Church Road LaFayette Parkway near I-85, LaGrange, GA.**

*(Proposed Inland Port to be located on Callaway Church Road – see page 6)  
(Near I-85 Ramp)*

**Zoned Commercial**

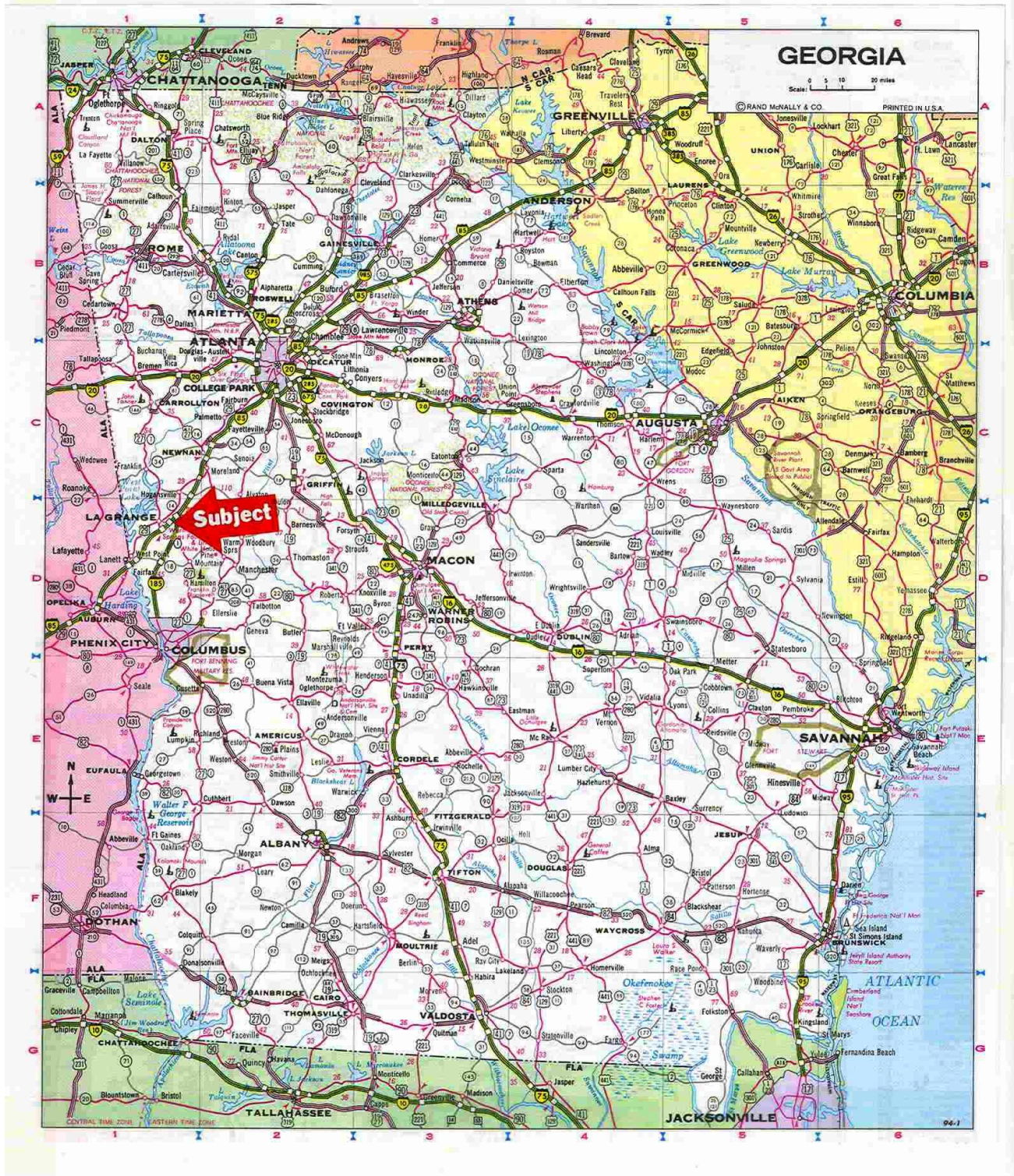
**All Utilities Available**

## Contact

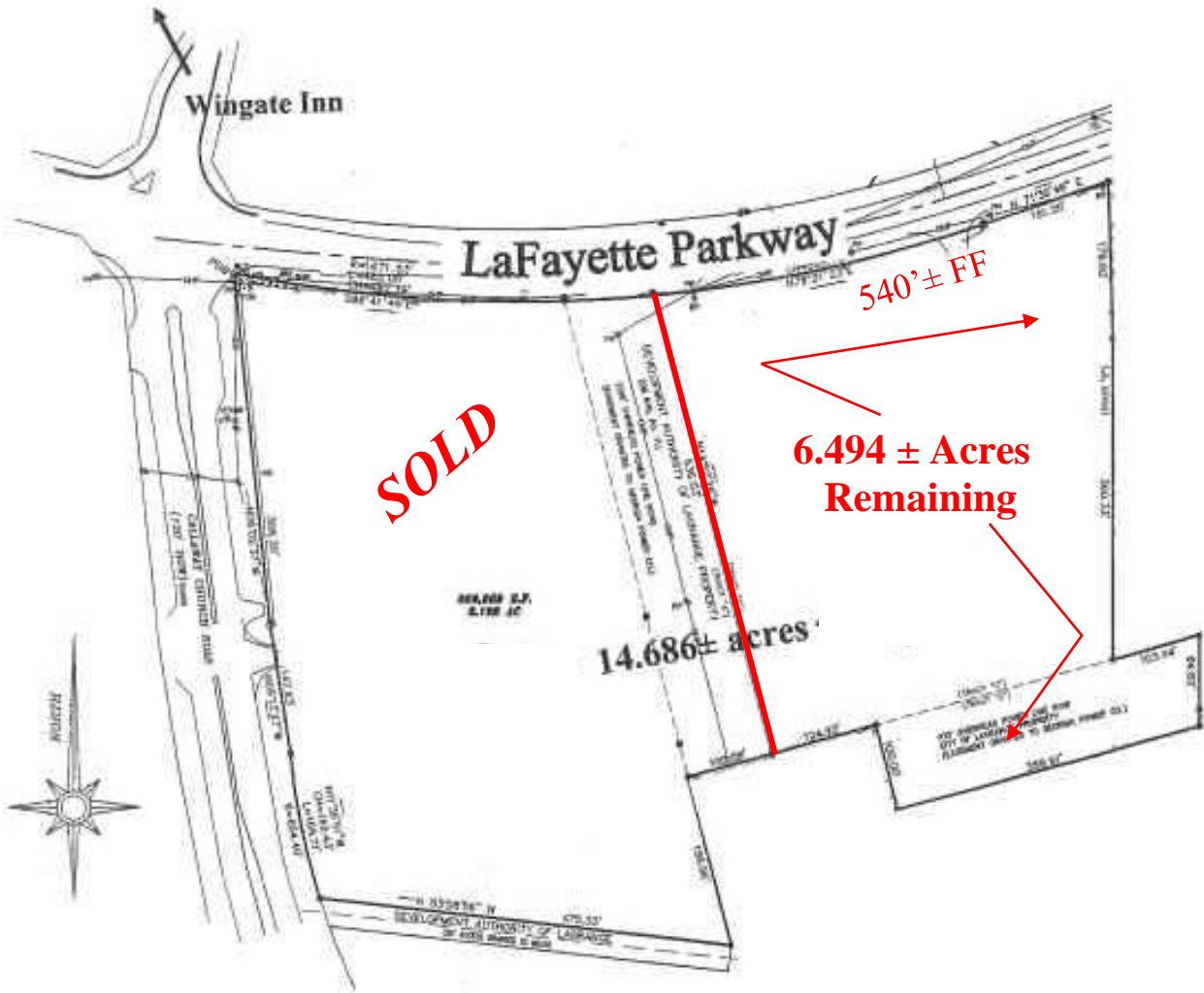
Jim Daniel  
**DANIEL**  
Realty &

Insurance Agency, Inc.  
207 Ridley Ave., LaGrange, GA 30240  
706-882-1848  
Email: jimd@daniel-realty-ins.com

**Price: \$1,139,000**



The foregoing information is furnished herewith without warranty or representation of any kind and is submitted subject to errors, omissions, changes of price, rental, prior sale, lease, or withdrawal without notice. No liability shall be assumed or imposed upon **Daniel Realty & Insurance Agency, Inc.**, its agents, employees, and/or sales associates. (4-29-24)

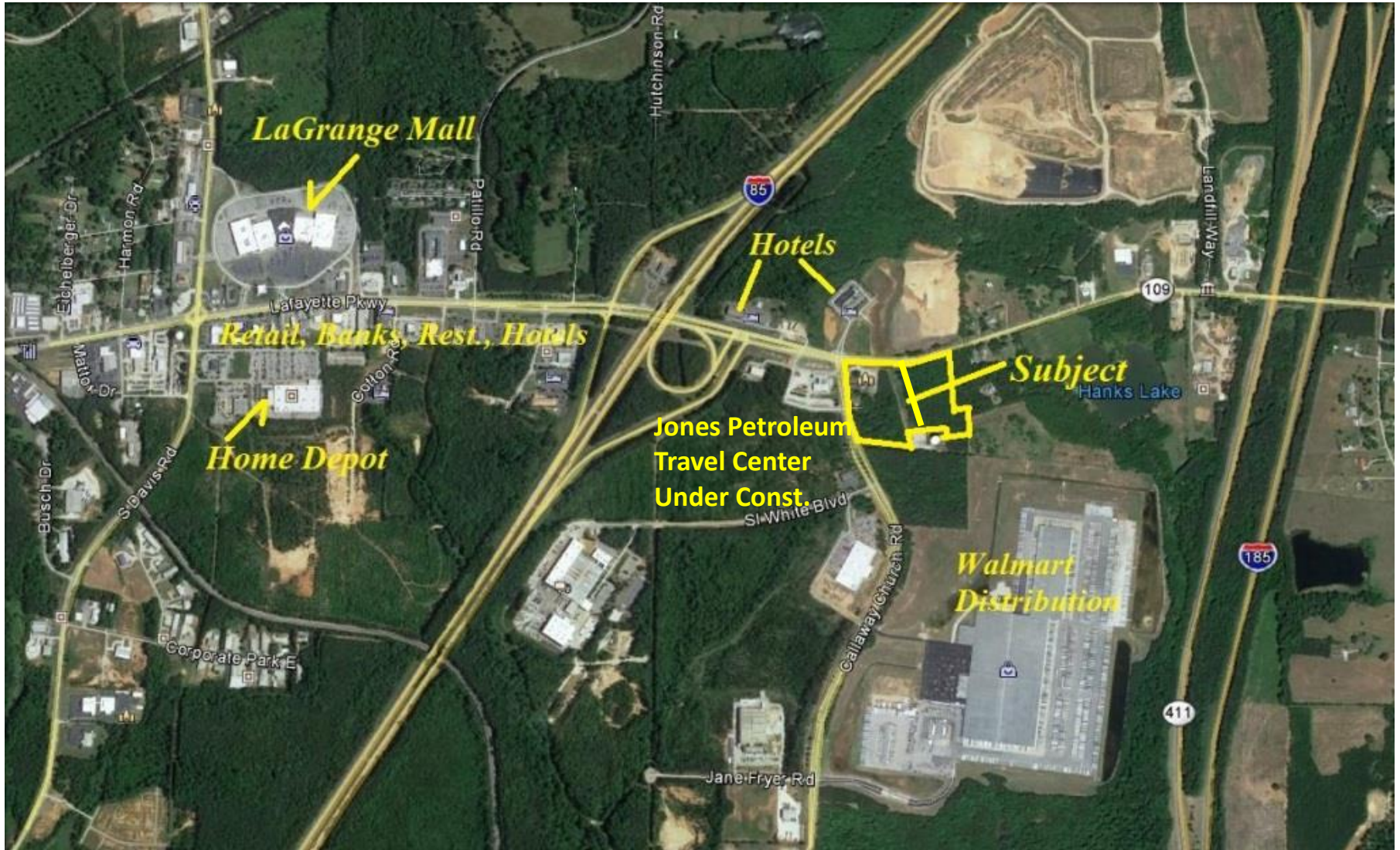


**Property Plat – Modified for Illustration  
Topo Available Upon Request**

The foregoing information is furnished herewith without warranty or representation of any kind and is submitted subject to errors, omissions, changes of price, rental, prior sale, lease, or withdrawal without notice. No liability shall be assumed or imposed upon **Daniel Realty & Insurance Agency, Inc.**, its agents, employees, and/or sales associates. (4-29-24)

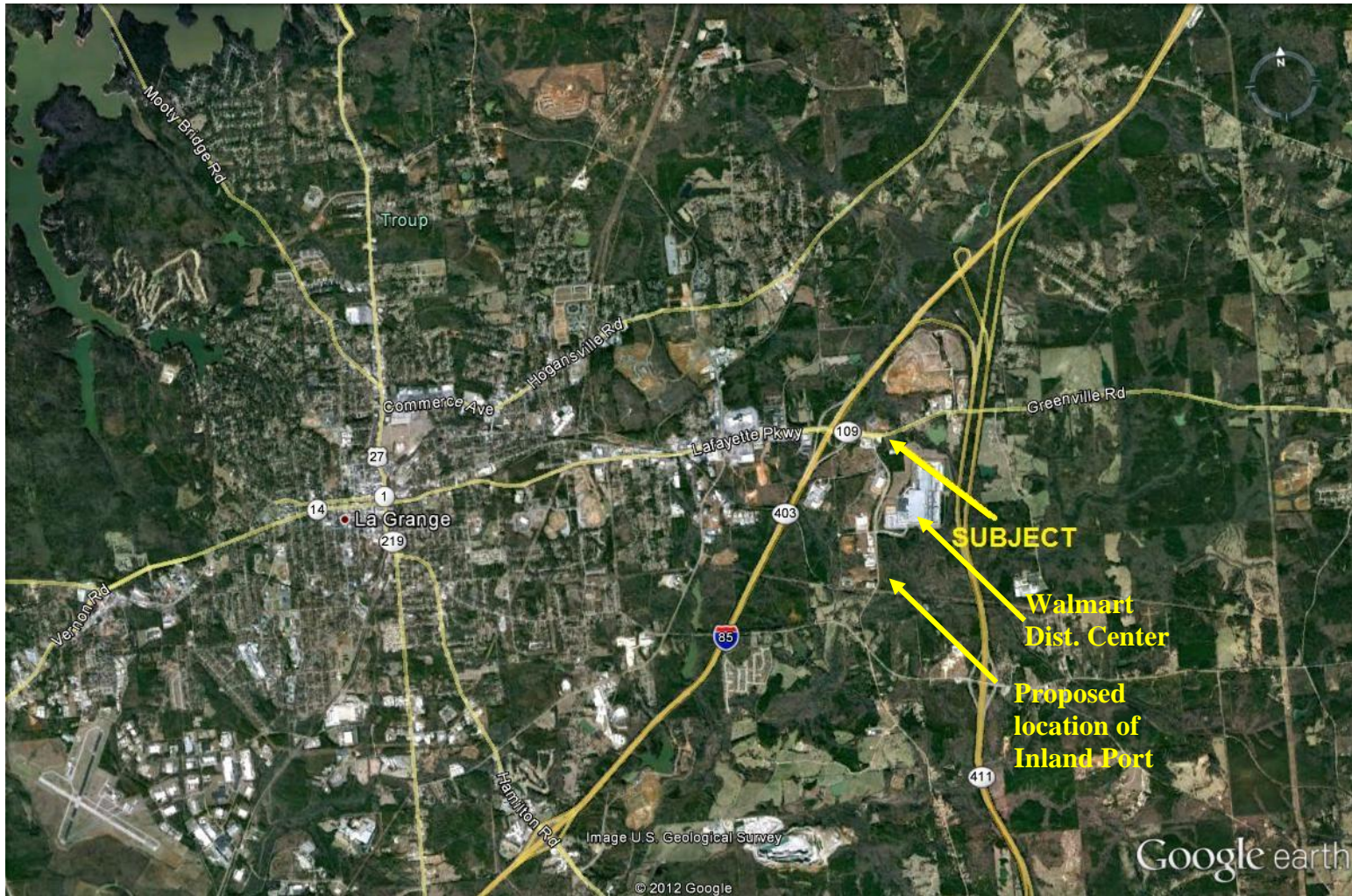


The foregoing information is furnished herewith without warranty or representation of any kind and is submitted subject to errors, omissions, changes of price, rental, prior sale, lease, or withdrawal without notice. No liability shall be assumed or imposed upon **Daniel Realty & Insurance Agency, Inc.**, its agents, employees, and/or sales associates. (4-29-24)

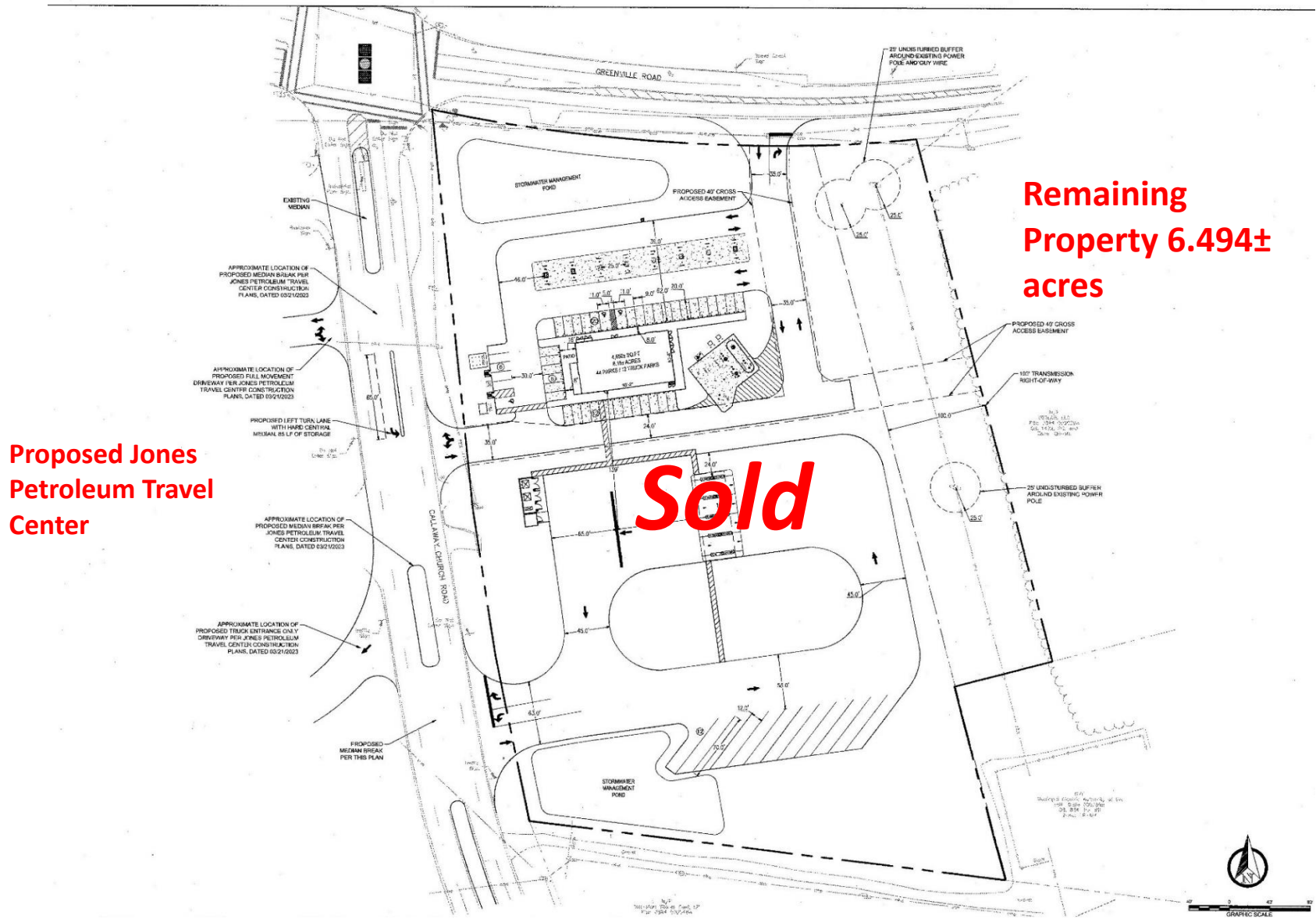


The foregoing information is furnished herewith without warranty or representation of any kind and is submitted subject to errors, omissions, changes of price, rental, prior sale, lease, or withdrawal without notice. No liability shall be assumed or imposed upon **Daniel Realty & Insurance Agency, Inc.**, its agents, employees, and/or sales associates. (4-29-24)

LaGrange, GA Property



The foregoing information is furnished herewith without warranty or representation of any kind and is submitted subject to errors, omissions, changes of price, rental, prior sale, lease, or withdrawal without notice. No liability shall be assumed or imposed upon **Daniel Realty & Insurance Agency, Inc.**, its agents, employees, and/or sales associates. (4-29-24)



Proposed Jones Petroleum Travel Center

Remaining Property 6.494± acres

Sold

The foregoing information is furnished herewith without warranty or representation of any kind and is submitted subject to errors, omissions, changes of price, rental, prior sale, lease, or withdrawal without notice. No liability shall be assumed or imposed upon Daniel Realty & Insurance Agency, Inc., its agents, employees, and/or sales associates. (4-29-24)