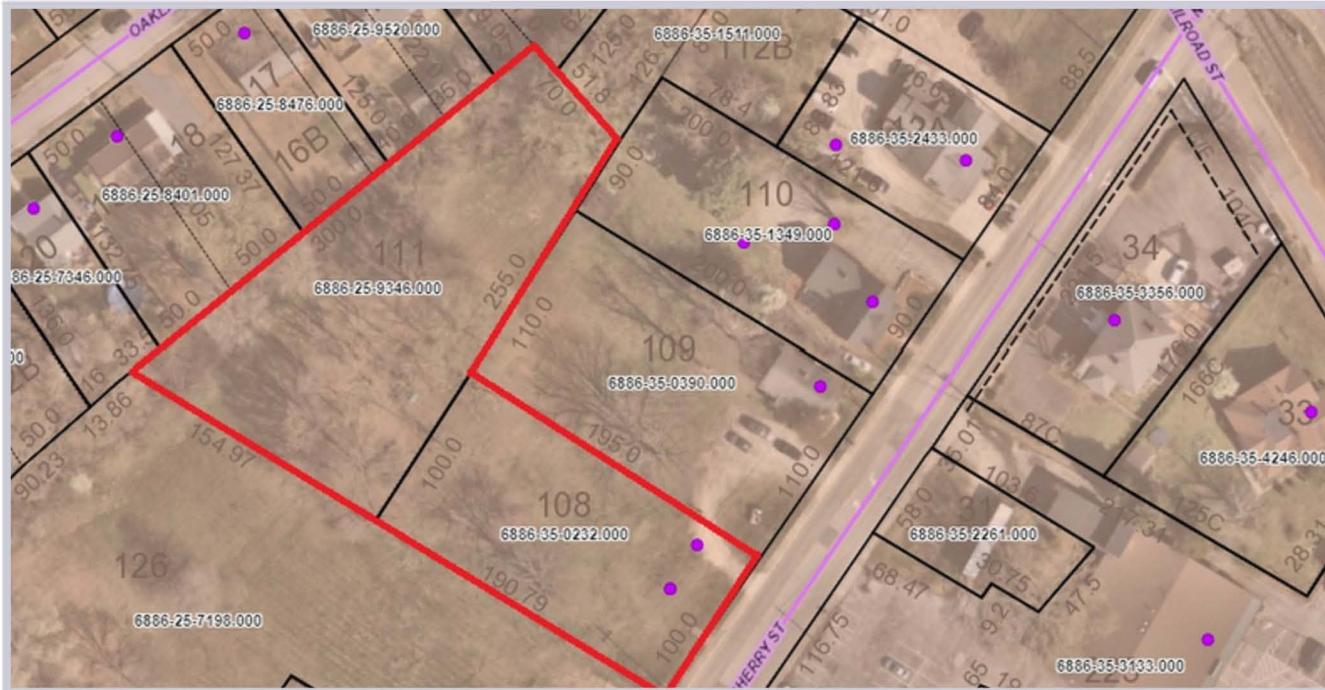


LAND FOR SALE - \$325,000.00

FAST FACTS



OAKDALE
COMMERCIAL PROPERTIES

336.314.3538
info@oakdalecommercial.com



www.oakdalecommercial.com

COMMERCIAL LAND OPPORTUNITY

223 - 2 North Cherry Street, Kernersville, NC

- Open, mostly cleared site with excellent visibility
- Front Lot: +/- 0.44 acres
- Back Lot: +/- 0.72 acres
- Total Site Area: +/- 1.16 acres
- Zoning: GB (General Business)

Property Highlights

- Range of commercial uses under GB zoning
- Street-facing front parcel with added development support from the rear lot
- Convenient Kernersville setting with established surrounding uses

Call Broker Brian Huckabee at 336-705-1679

LAND FOR SALE - \$325,000.00

Commercial land opportunity in Kernersville featuring two contiguous lots with a combined area of +/- 1.16 acres. The front parcel offers direct street presence, while the rear parcel expands the site flexibility for future access, and development.

