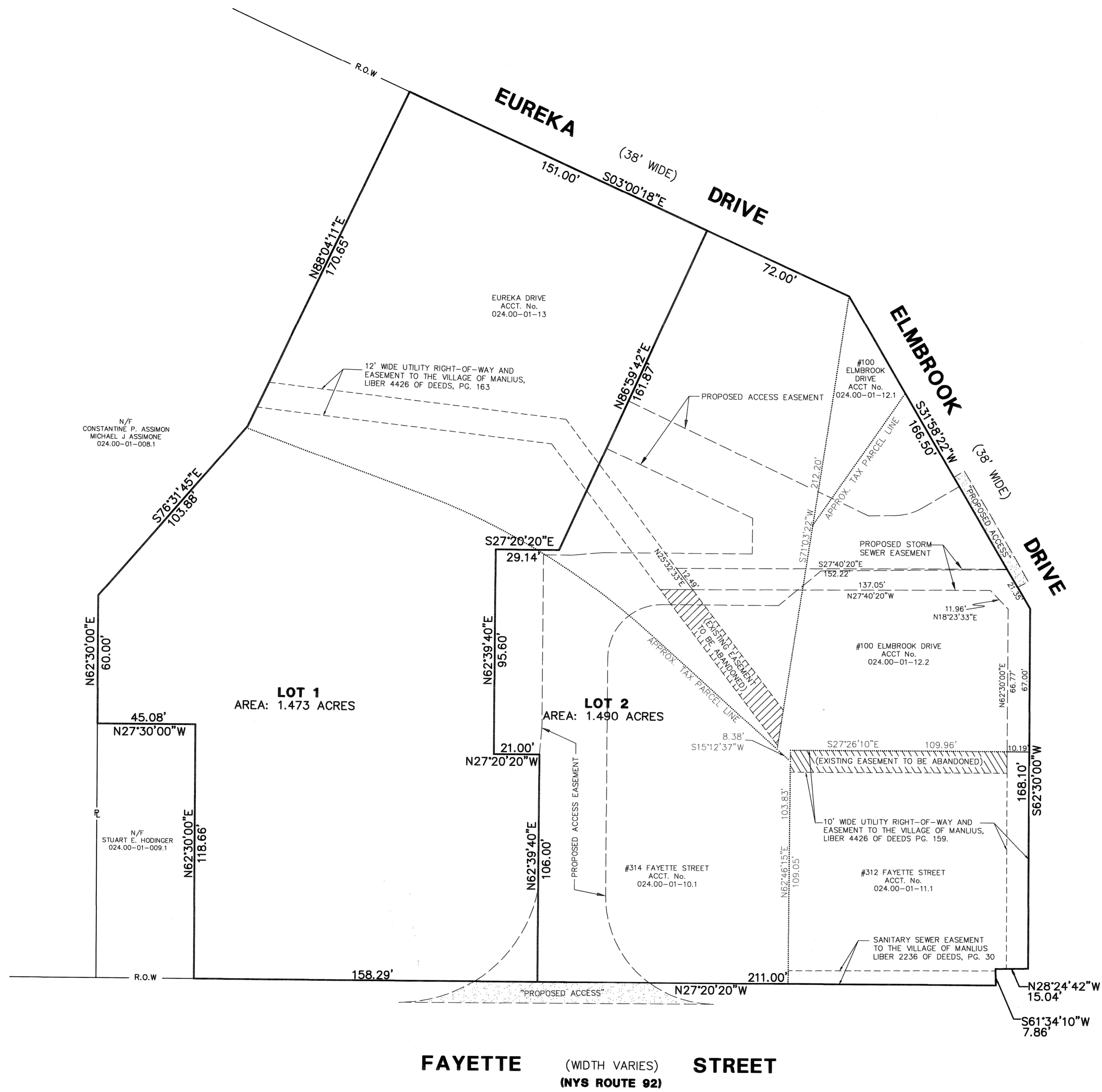
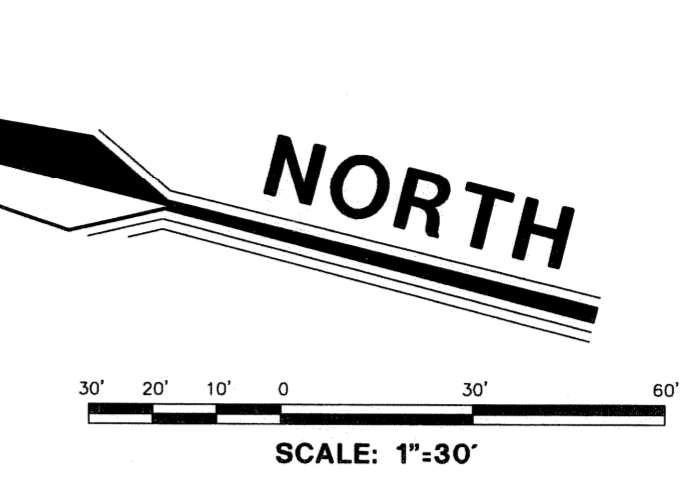


LOCATION MAP
NOT TO SCALE



REFERENCES:

- CHICAGO TITLE INSURANCE COMPANY, TITLE No. CT14-307-ALB, DATED AUGUST 8, 2014.
 - 100 ELMBROOK DRIVE: SBL No. 024.00-01-12.1, SBL No. 024.00-01-12.2, LIBER 5011 OF DEEDS PG. 895. (N/F BERMICELI MANAGEMENT, LLC)
 - 312 FAYETTE STREET: SBL No. 024.00-01-11.1, LIBER 5011 OF DEEDS, PG. 895. (N/F BERMICELI MANAGEMENT, LLC)
- CHICAGO TITLE INSURANCE COMPANY, TITLE No. T14-30715-ALB, DATED AUGUST 1, 2014.
 - 314 FAYETTE STREET: SBL No. 024.00-01-10.1, LIBER 5279 OF DEEDS, PG. 312 (N/F HOLLOWICK INC.)
 - EUREKA DRIVE: SBL No. 124.00-01-13, LIBER 5279 OF DEEDS, PG. 312 (N/F HOLLOWICK INC.)
- NYS APPROPRIATION MAP Nos. 52 & 53, PARCEL Nos. 29 & 30, LIBER 4764 OF DEEDS PG 913 AND LIBER 4772 OF DEEDS PG 325.
- NYS APPROPRIATION MAP Nos. 50 & 51, PARCEL Nos. 27 & 28, LIBER 4764 OF DEEDS PG 905 AND LIBER 4772 OF DEEDS PG 315.
- NYS APPROPRIATION MAP No. 44, PARCEL 21, LIBER 3204 OF DEEDS PG 95 AND LIBER 3208 OF DEEDS PG 240.

CERTIFICATION:

ANY UNAUTHORIZED ALTERATION OR ADDITION TO THIS MAP IS A VIOLATION OF ARTICLE 145, SECTION 7209 OF THE NEW YORK STATE EDUCATION LAW.

WE, PARRONE ENGINEERING, HEREBY CERTIFY THAT THIS MAP WAS PREPARED FROM NOTES OF AN INSTRUMENT SURVEY COMPLETED ON SEPTEMBER 16, 2014 AND THIS MAP WAS COMPLETED ON JANUARY 21, 2015.

David S. Staerr
DAVID S. STAERR, P.L.S. LIC. NO. 049962
PARRONE ENGINEERING



FAYETTE (WIDTH VARIES) STREET
(NYS ROUTE 92)

APPROVED BY:	APPROVED BY:	Onondaga County Department of Public Health This is to certify that approved plans for Water Supply and Sewage Disposal for this project are on file in the office of the Onondaga County Department of Public Health. Consent is hereby given for the filing of this map in the Onondaga County Clerk's Office in accordance with the Onondaga County Sanitary Code. Director of Public Health
VILLAGE PLANNING BOARD CHAIRMAN DATE:	LOCAL HIGHWAY DEPARTMENT DATE:	
APPROVED BY:	APPROVED BY:	By _____ Date _____
VILLAGE ENGINEER DATE:	LOCAL HIGHWAY DEPARTMENT DATE:	

REVISIONS:	BY:	DATE:
ADD PROPOSED EASEMENTS	N.A.F.	3/27/15
ADD VILLAGE ENGINEER SIGNATURE BLOCK	N.A.F.	4/15/15

	THE PIANO WORKS 349 WEST COMMERCIAL STREET SUITE 3200 EAST ROCHESTER, NY 14445 T 585.586.0200 F 585.586.6752	Copyright © 2014 PARRONE engineering Designed By: _____ Drawn By: _____ Checked By: _____ DATE: JAN 21, 2015 SCALE: 1" = 30' JOB No.: 6985
	SUBDIVISION MAP FOR THE: CVS MANLIUS SUBDIVISION SITUATE IN: PART OF TOWN LOT 86 - MILITARY TRACT VILLAGE OF MANLIUS ONONDAGA COUNTY NEW YORK	