

FOR LEASE

NEWTOWNE CENTER



2518-2620 E. GRAND RIVER AVENUE
HOWELL, MI 48843

PROPERTY HIGHLIGHTS:

- Prime location off Grand River Avenue just west of Latson Road and just east of downtown
- Spaces from 1,000 SF to 2,620 SF (endcap available)
- Great exposure along Grand River Ave w/over traffic count over 25,000 per day
- Surrounded by national retailers – Home Depot, Walmart, Lowe's, Meijer's, Auto Zone, Hobby Lobby and Family Farm & Home
- Average HH Income exceeds \$116,000 w/in 3-mile radius
- Lease Rate – Asking \$12/SF, NNN

The information provided herein along with any attachment(s) was obtained from sources believed to be reliable, however, Friedman Real Estate makes no guarantees, warranties, or representations as to the completeness or accuracy of such information and legal counsel is advised. All information provided is subject to verification and no liability for reliance on such information or errors or omissions is assumed. The presentation of this property is submitted subject to errors, omissions, change of price or conditions, prior sale or lease, or withdrawal without notice. Copyright © 2025 Friedman Real Estate. All rights reserved.

FOR MORE INFORMATION PLEASE CONTACT:



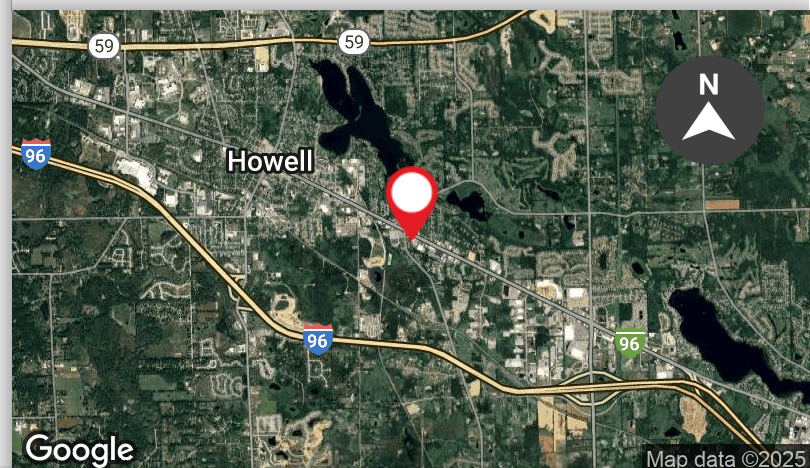
BRIANNA JOHNSTON
Associate, Brokerage Services
brianna.johnston@freg.com



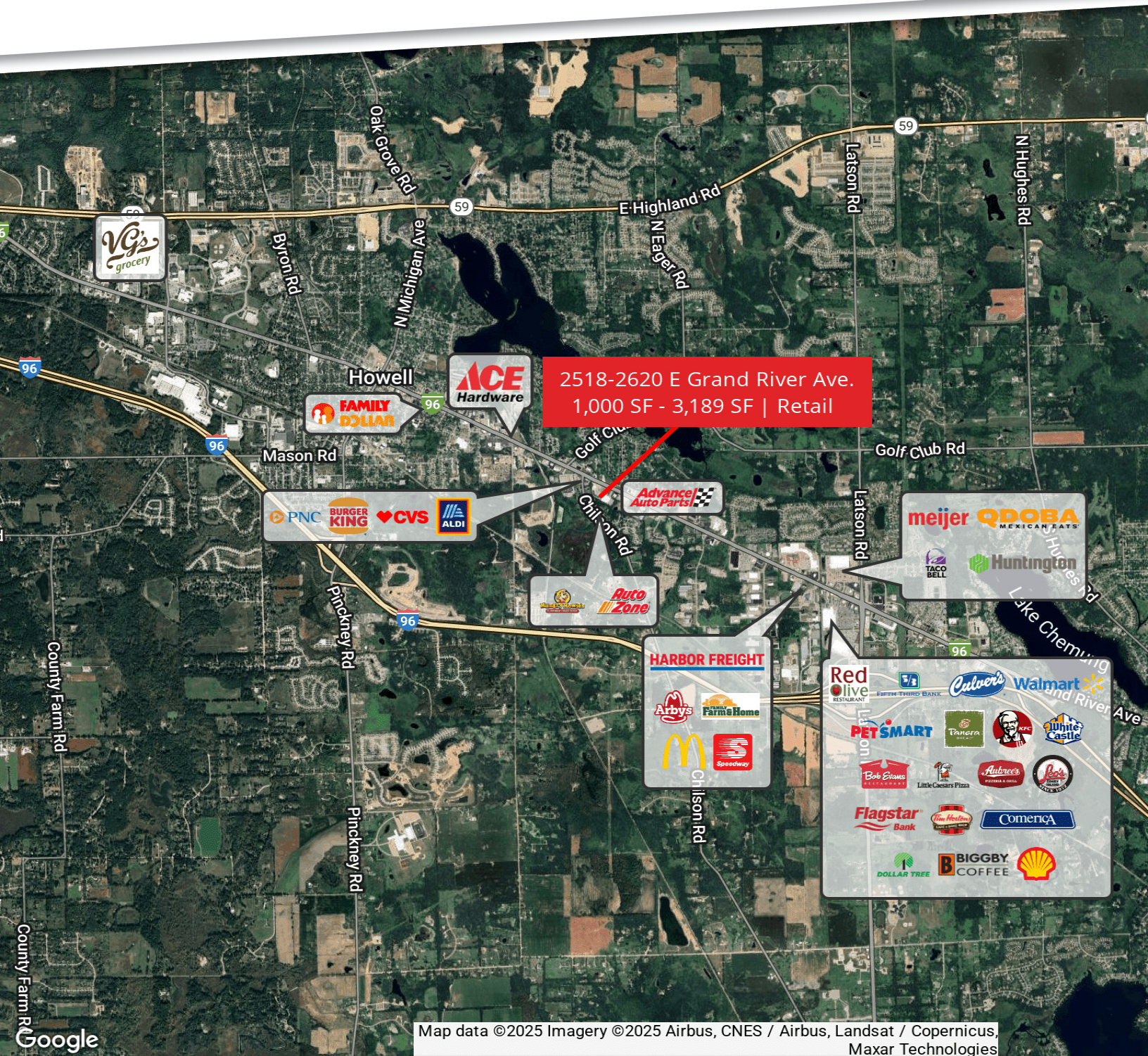
ALAN STERN
Senior Vice President, Brokerage Services
alan.stern@freg.com

248.324.2000

eCODE 279



NEWTOWNE CENTER AREA **RETAILER MAP**



Map data ©2025 Imagery ©2025 Airbus, CNES / Airbus, Landsat / Copernicus, Maxar Technologies

NEWTOWNE CENTER LOCAL RETAILER MAP



NEWTOWNE CENTER PROPERTY **SITE PLAN**

