



FOR SALE

**2795**

Park Drive, Owatonna, MN

**8,000 SF AVAILABLE**



**TODD HANSON**

Managing Director

+1 952 820 8737

[todd.hanson@cushwake.com](mailto:todd.hanson@cushwake.com)

**JASON SELL**

Senior Director

+1 952 837 8515

[jason.sell@cushwake.com](mailto:jason.sell@cushwake.com)

**JORDAN DICK**

Director

+1 952 204 7631

[jordan.dick@cushwake.com](mailto:jordan.dick@cushwake.com)



2795 PARK DRIVE

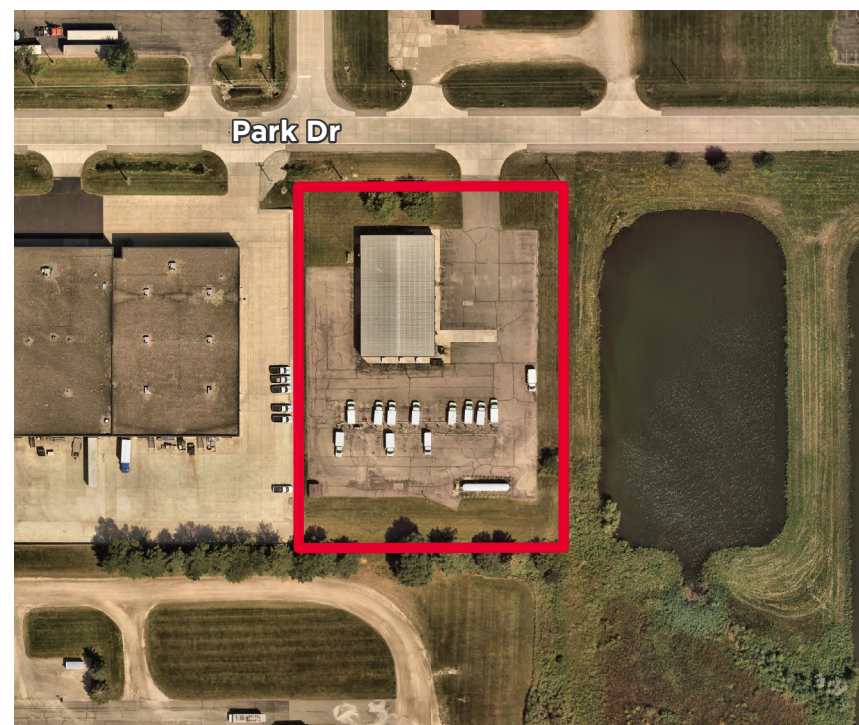


## PROPERTY HIGHLIGHTS

- Unique small building available for sale
- Freezer system in place
- Docks and drive-in doors
- Potential Outside Storage

## PROPERTY DETAILS

<b>Building Size:</b>	
Office:	2,000
Warehouse:	4,000
Freezer:	2,000
Total:	<b>8,000 SF</b>
<b>Site Area:</b>	
2 Acres	
<b>Clear Height:</b>	
16'	
<b>Loading:</b>	
1 Dock Door 6 Drive-Ins	
<b>Year Built:</b>	
1999	
<b>Zoning:</b>	
I-2	
<b>2025 Taxes:</b>	
\$11,500	
<b>Asking Price:</b>	
\$600,000	





# PHOTOS








## LOCATION MAP



## DEMOGRAPHICS

	2024	1 Mile	2 Miles	3 Miles
	<b>Population:</b>	625	19,520	27,832
	<b>Average Household Income:</b>	\$48,129	\$80,692	\$89,975
	<b>Number of Household:</b>	284	8,180	11,269



**Contanct Information**

**TODD HANSON**

Managing Director  
+1 952 820 8737  
todd.hanson@cushwake.com

**JASON SELL**

Senior Director  
+1 952 837 8515  
jason.sell@cushwake.com

**JORDAN DICK**

Director  
+1 952 204 7631  
jordan.dick@cushwake.com

Cushman & Wakefield  
3500 American Blvd. W., Suite 200  
Bloomington, MN 55431  
+1 952 831 1000

**[cushmanwakefield.com](http://cushmanwakefield.com)**

©2025 Cushman & Wakefield. All rights reserved. The information contained in this communication is strictly confidential. This information has been obtained from sources believed to be reliable but has not been verified. NO WARRANTY OR REPRESENTATION, EXPRESS OR IMPLIED, IS MADE AS TO THE CONDITION OF THE PROPERTY (OR PROPERTIES) REFERENCED HEREIN OR AS TO THE ACCURACY OR COMPLETENESS OF THE INFORMATION CONTAINED HEREIN, AND SAME IS SUBMITTED SUBJECT TO ERRORS, OMISSIONS, CHANGE OF PRICE, RENTAL OR OTHER CONDITIONS, WITHDRAWAL WITHOUT NOTICE, AND TO ANY SPECIAL LISTING CONDITIONS IMPOSED BY THE PROPERTY OWNER(S). ANY PROJECTIONS, OPINIONS OR ESTIMATES ARE SUBJECT TO UNCERTAINTY AND DO NOT SIGNIFY CURRENT OR FUTURE PROPERTY PERFORMANCE.